

[illegible]

Prepared by
RITCHIE COUNTY
ASSESSOR'S OFFICE
CHARLENE MOSSOR, ASSESSOR

Original lot size	
Deed lot number	
Parcel or index number	
Improvement	
Railroad	

5/7/2019 RTI
11/20/10 5:34
12/13/2013 PJMH

All finished tax maps created under the provisions of legislation are the property of the Ritchie County Assessor and the reproduction, copying, distribution, sale, or lease of such tax maps or copies thereof without the written permission of the Ritchie County Assessor is prohibited by law.

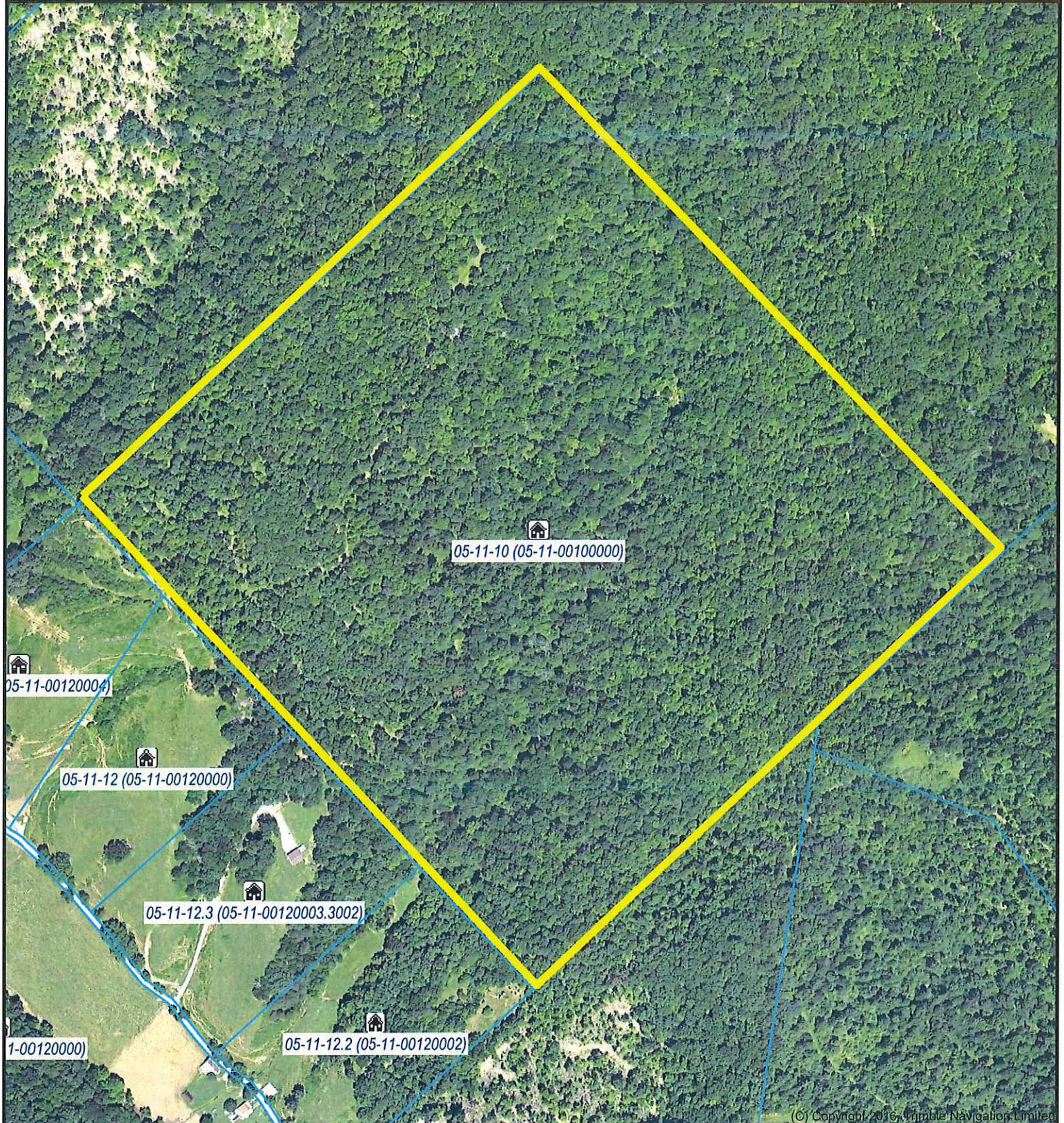
HARRISVILLE, W.VA.

District : 05 Map No : 11
 Date, Map Scale
 Aerial Photography : APRIL 1952
 Photo No : 37



100 Acres +/- Cairo Ritchie County, WV.

Buddy Hodge
Owner / Broker
304-834-0212



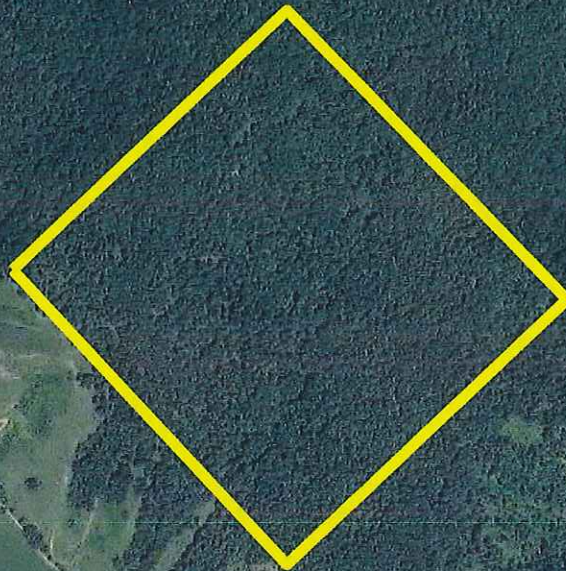
DISCLAIMER: Boundary lines, size & shape are an approximate sketch only and NOT to scale. The information contained herein is as obtained by this broker from sellers, owners, or other sources. Neither this broker nor owners make any guarantee, warranty or representation as to correctness of any data or descriptions and the accuracy of such statements. The correctness and / or accuracy of any and all maps & statements should be determined through independent investigation made by the prospective purchaser.



100 Acres +/- Cairo Ritchie County, WV.

Buddy Hodge
Owner / Broker
304-834-0212

Brushy Peak School (historical)

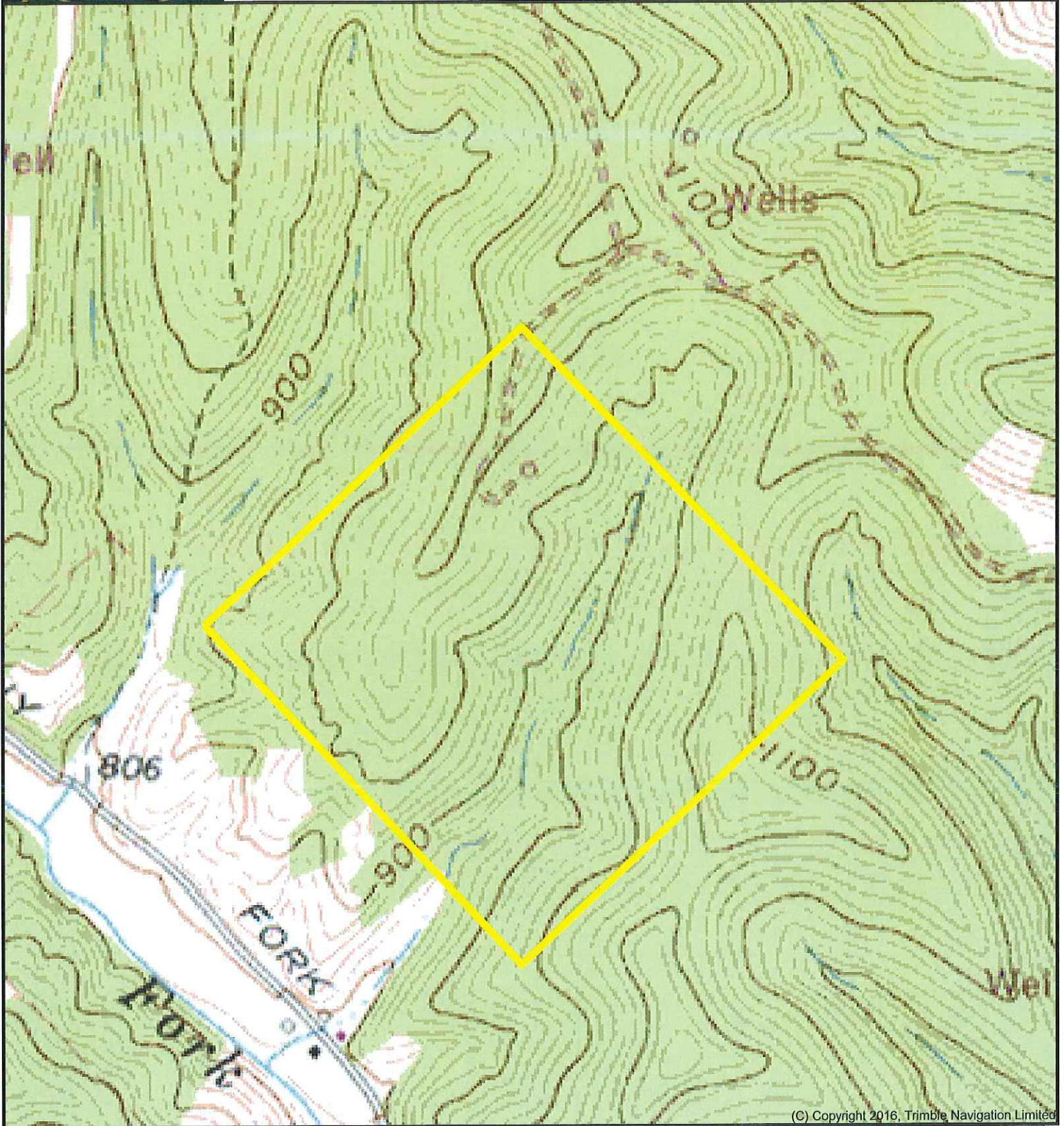


DISCLAIMER: Boundary lines, size & shape are an approximate sketch only and NOT to scale. The information contained herein is as obtained by this broker from sellers, owners, or other sources. Neither this broker nor owners make any guarantee, warranty or representation as to correctness of any data or descriptions and the accuracy of such statements. The correctness and / or accuracy of any and all maps & statements should be determined through independent investigation made by the prospective purchaser.



100 Acres +/- Cairo Ritchie County, WV.

Buddy Hodge
Owner / Broker
304-834-0212

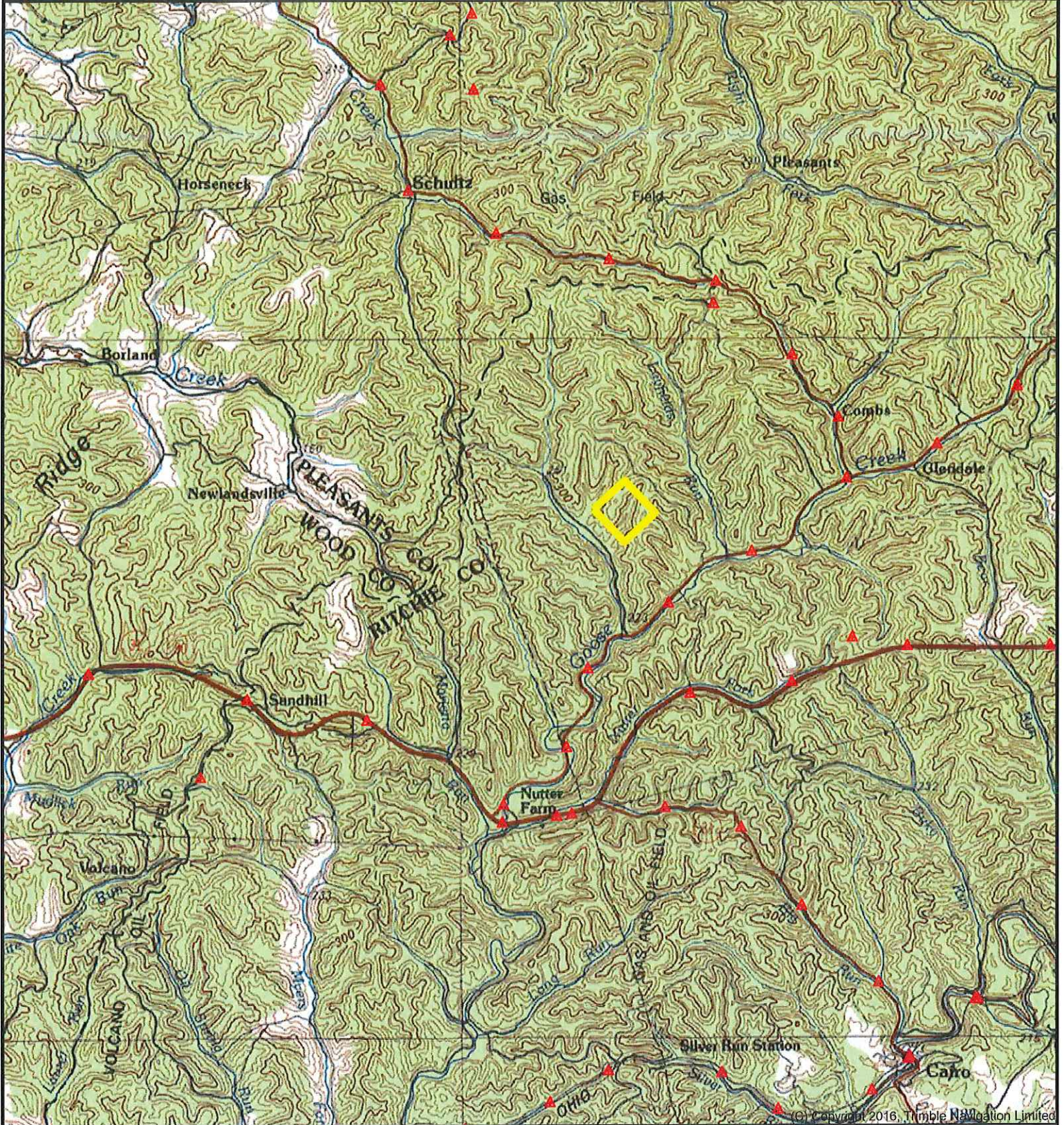


DISCLAIMER: Boundary lines, size & shape are an approximate sketch only and NOT to scale. The information contained herein is as obtained by this broker from sellers, owners, or other sources. Neither this broker nor owners make any guarantee, warranty or representation as to correctness of any data or descriptions and the accuracy of such statements. The correctness and / or accuracy of any and all maps & statements should be determined through independent investigation made by the prospective purchaser.



100 Acres +/- Cairo Ritchie County, WV.

Buddy Hodge
Owner / Broker
304-834-0212



DISCLAIMER: Boundary lines, size & shape are an approximate sketch only and NOT to scale. The information contained herein is as obtained by this broker from sellers, owners, or other sources. Neither this broker nor owners make any guarantee, warranty or representation as to correctness of any data or descriptions and the accuracy of such statements. The correctness and / or accuracy of any and all maps & statements should be determined through independent investigation made by the prospective purchaser.