
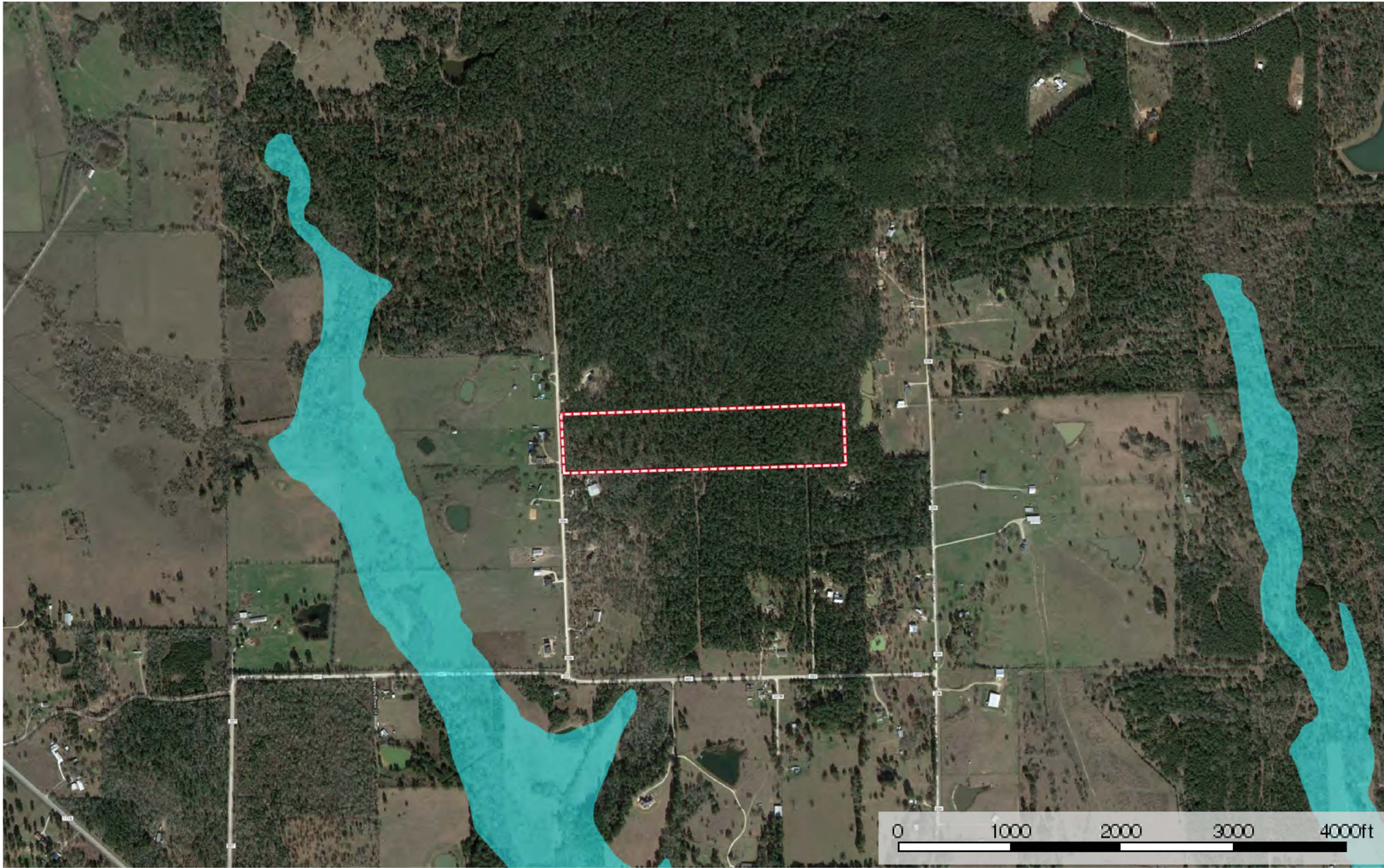



6027 CR 207 A, Plantersville, TX 77363
Grimes County, Texas, 22.659 AC +/-




 Boundary





 Boundary



 Boundary

|  Boundary 22.9 ac

SOIL CODE	SOIL DESCRIPTION	ACRES	%	CAP
HuC	Huntsburg loamy fine sand, 1 to 5 percent slopes	5.6	24.6	4e
AnC	Annona fine sandy loam, 1 to 5 percent slopes	14.3	62.51	4e
FrC	Frelsburg clay, 1 to 5 percent slopes	3.0	12.89	3e
TOTALS		22.9	100%	3.87

Capability Legend

Increased Limitations and Hazards

Decreased Adaptability and Freedom of Choice Users

Land, Capability

								
	1	2	3	4	5	6	7	8
'Wild Life'	•	•	•	•	•	•	•	•
Forestry	•	•	•	•	•	•	•	
Limited	•	•	•	•	•	•	•	
Moderate	•	•	•	•	•	•		
Intense	•	•	•	•	•			
Limited	•	•	•	•				
Moderate	•	•	•					
Intense	•	•						
Very Intense	•							

Grazing Cultivation

(c) climatic limitations (e) susceptibility to erosion

(s) soil limitations within the rooting zone (w) excess of water