

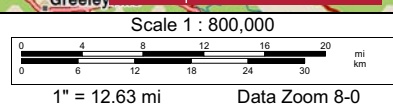
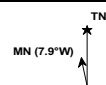
All information is assumed to be accurate and substantially correct but no assumptions of liability is intended. Neither the seller nor the agent or representatives warrant the completeness or accuracy of the information. Seller does not guarantee timber volumes, values, acreages (total, woodland/tropland, stand or otherwise), tree ages or the condition and/or function of any improvements, including but not limited to all buildings, machinery, appliances, wells, equipment, livestock and ponds. No representatives or warranties are expressed or implied as to the property, its condition, boundaries or logging feasibility. Prospective buyers should satisfy themselves as to the accuracy of this information.

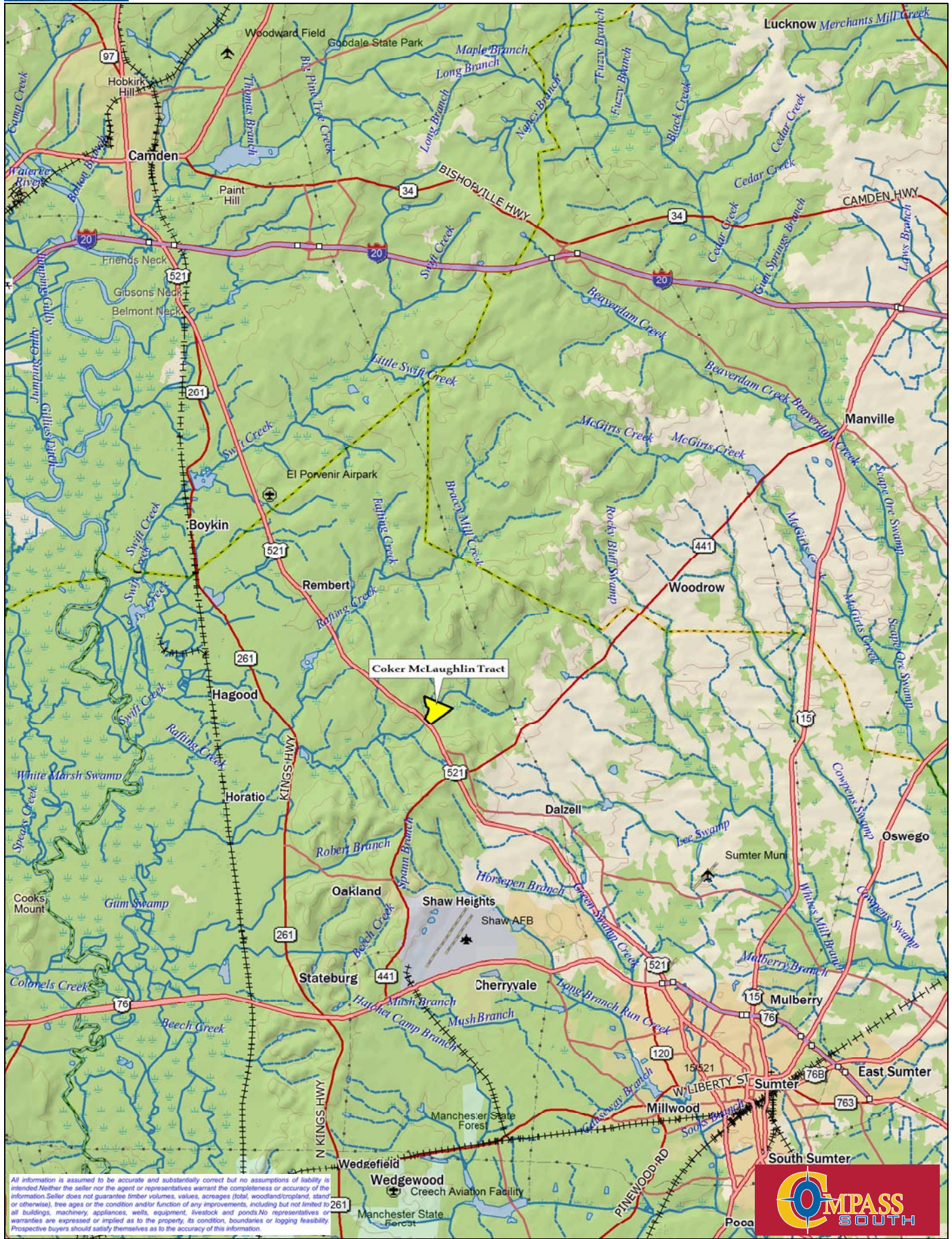


Data use subject to license.

© DeLorme. XMap® 5.2 GIS Enterprise.

www.delorme.com



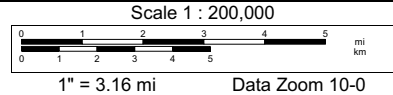
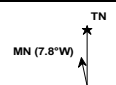


All information is assumed to be accurate and substantially correct but no assumptions of liability is intended. Neither the seller nor the agent or representatives warrant the completeness or accuracy of the information. Seller does not guarantee timber volumes, values, acreages (total, woodland/cropland, stand or otherwise), tree ages or the condition and/or function of any improvements, including but not limited to all buildings, machinery, appliances, wells, equipment, livestock and ponds. No representatives or warranties are expressed or implied as to the property, its condition, boundaries or logging feasibility. Prospective buyers should satisfy themselves as to the accuracy of this information.

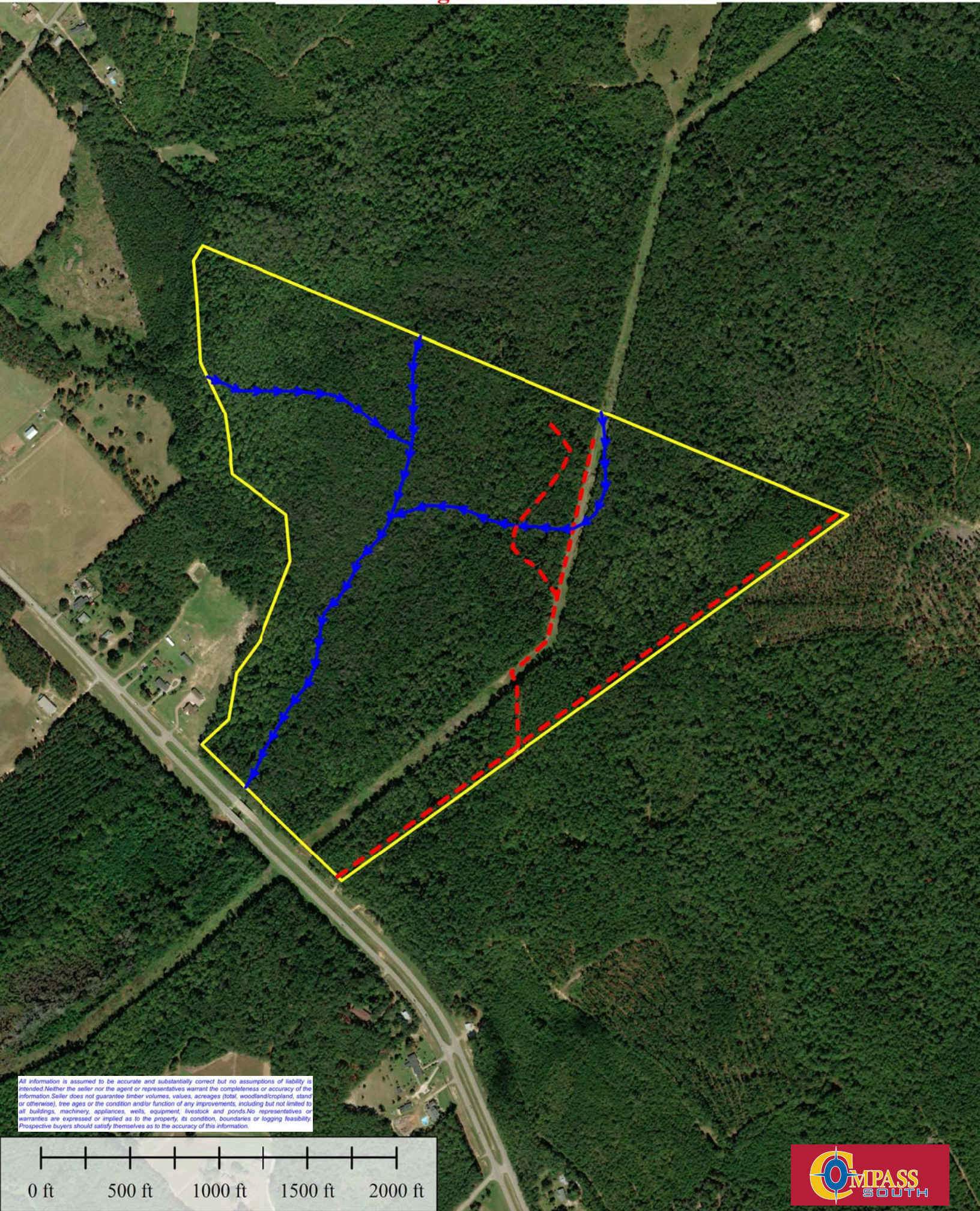
Data use subject to license.

© DeLorme. XMap® 5.2 GIS Enterprise.

www.delorme.com



# Coker McLaughlin Tract +/- 152 Acres



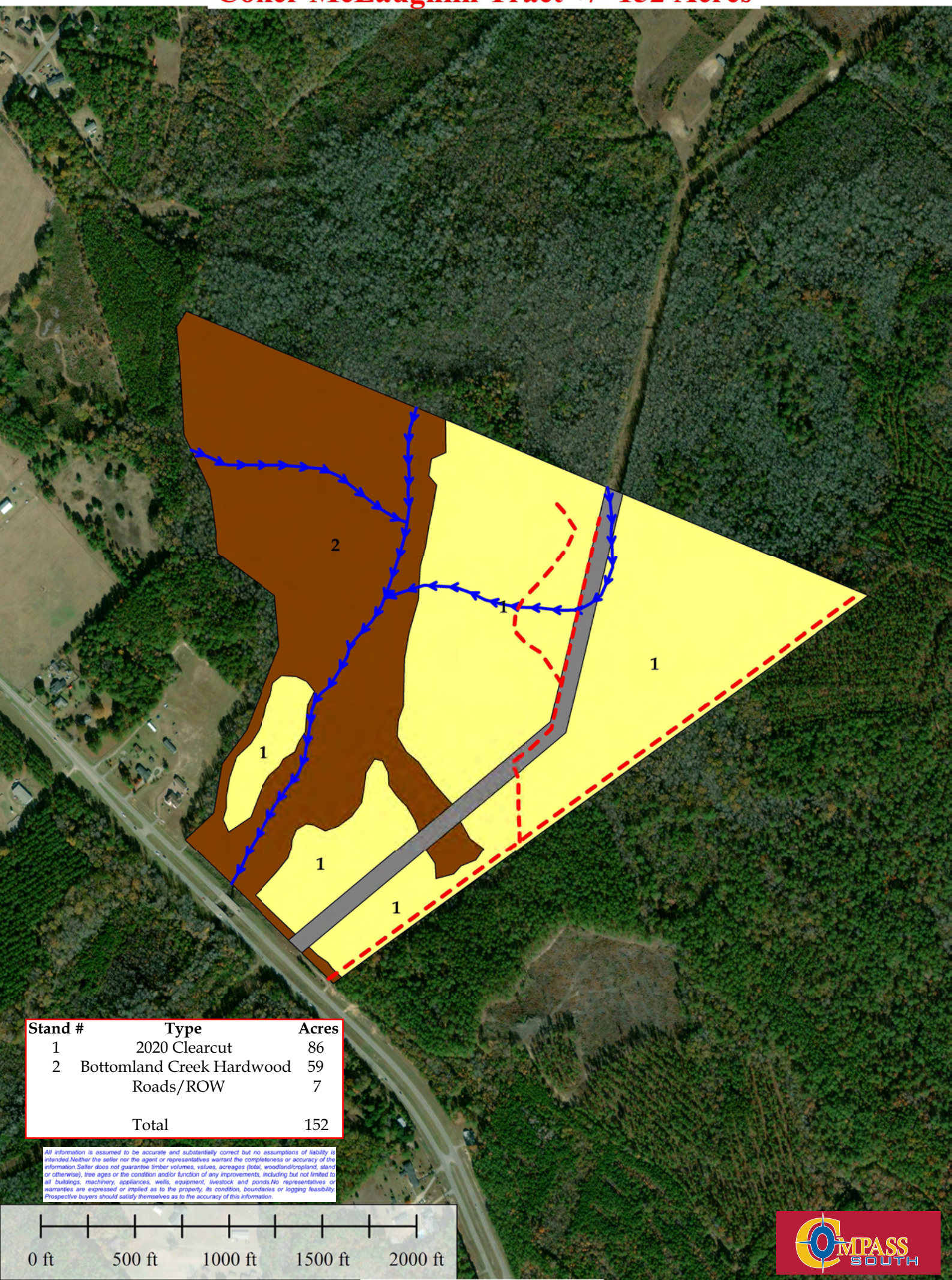
All information is assumed to be accurate and substantially correct but no assumptions of liability is intended. Neither the seller nor the agent or representatives warrant the completeness or accuracy of the information. Seller does not guarantee timber volumes, values, acreages (total, woodland/cropland, stand or otherwise), tree ages or the condition and/or function of any improvements, including but not limited to all buildings, machinery, appliances, wells, equipment, livestock and ponds. No representatives or warranties are expressed or implied as to the property, its condition, boundaries or logging feasibility. Prospective buyers should satisfy themselves as to the accuracy of this information.

0 ft 500 ft 1000 ft 1500 ft 2000 ft



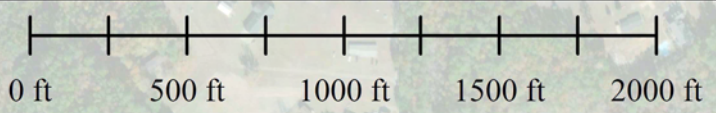
Compass South, Inc.

# Coker McLaughlin Tract +/- 152 Acres

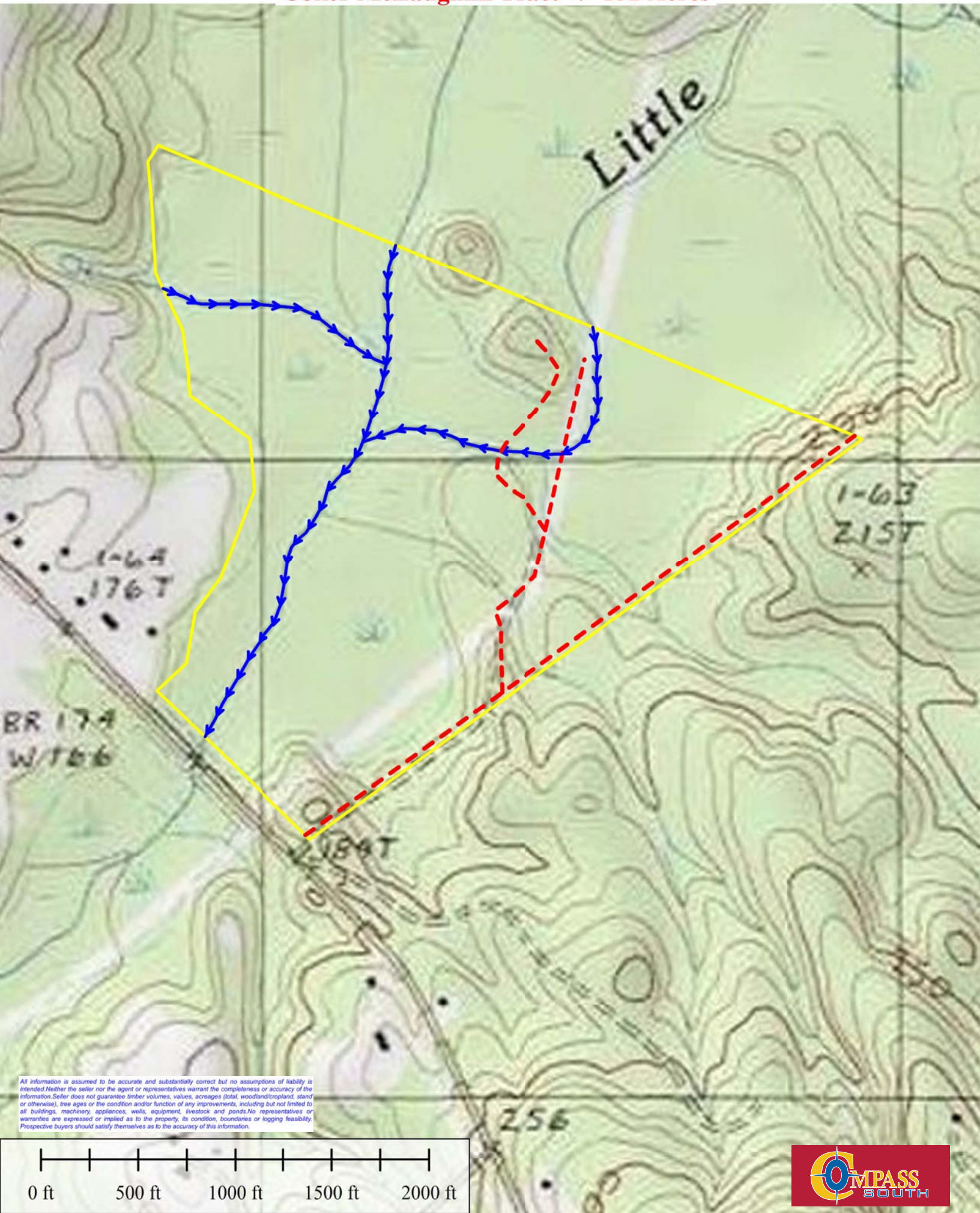


Stand #	Type	Acres
1	2020 Clearcut	86
2	Bottomland Creek Hardwood	59
	Roads/ROW	7
	Total	152

All information is assumed to be accurate and substantially correct but no assumptions of liability is intended. Neither the seller or the agent or representatives warrant the completeness or accuracy of the information. Seller does not guarantee timber volumes, values, acreages (total, woodland/cropland, stand or otherwise), tree ages or the condition and/or function of any improvements, including but not limited to all buildings, machinery, appliances, wells, equipment, livestock and ponds. No representatives or warranties are expressed or implied as to the property, its condition, boundaries or logging feasibility. Prospective buyers should satisfy themselves as to the accuracy of this information.



# Coker McLaughlin Tract +/- 152 Acres



All information is assumed to be accurate and substantially correct but no assumptions of liability is intended. Neither the seller nor the agent or representatives warrant the completeness or accuracy of the information. Seller does not guarantee timber volumes, values, acreages (total, woodland/roughland, stand or otherwise), tree ages or the condition and/or function of any improvements, including but not limited to all buildings, machinery, appliances, wells, equipment, livestock and ponds. No representatives or warranties are expressed or implied as to the property, its condition, boundaries or logging feasibility. Prospective buyers should satisfy themselves as to the accuracy of this information.

