

Lyman County Pasture Land for Sale (Tract 3 and/or Tract 4)

Description:

TRACT 3: 154 acres of pasture/crop/hunting
86.10 CRP acres coming out in 9/30/2021.

TRACT 4: 160 acres of pasture/crop/hunting.

Price:

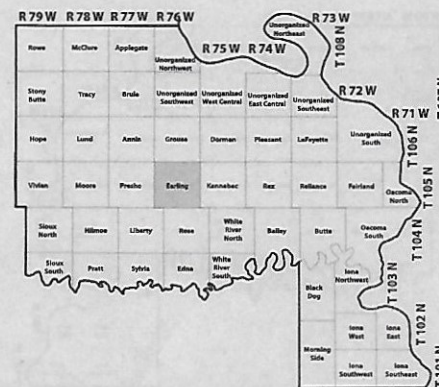
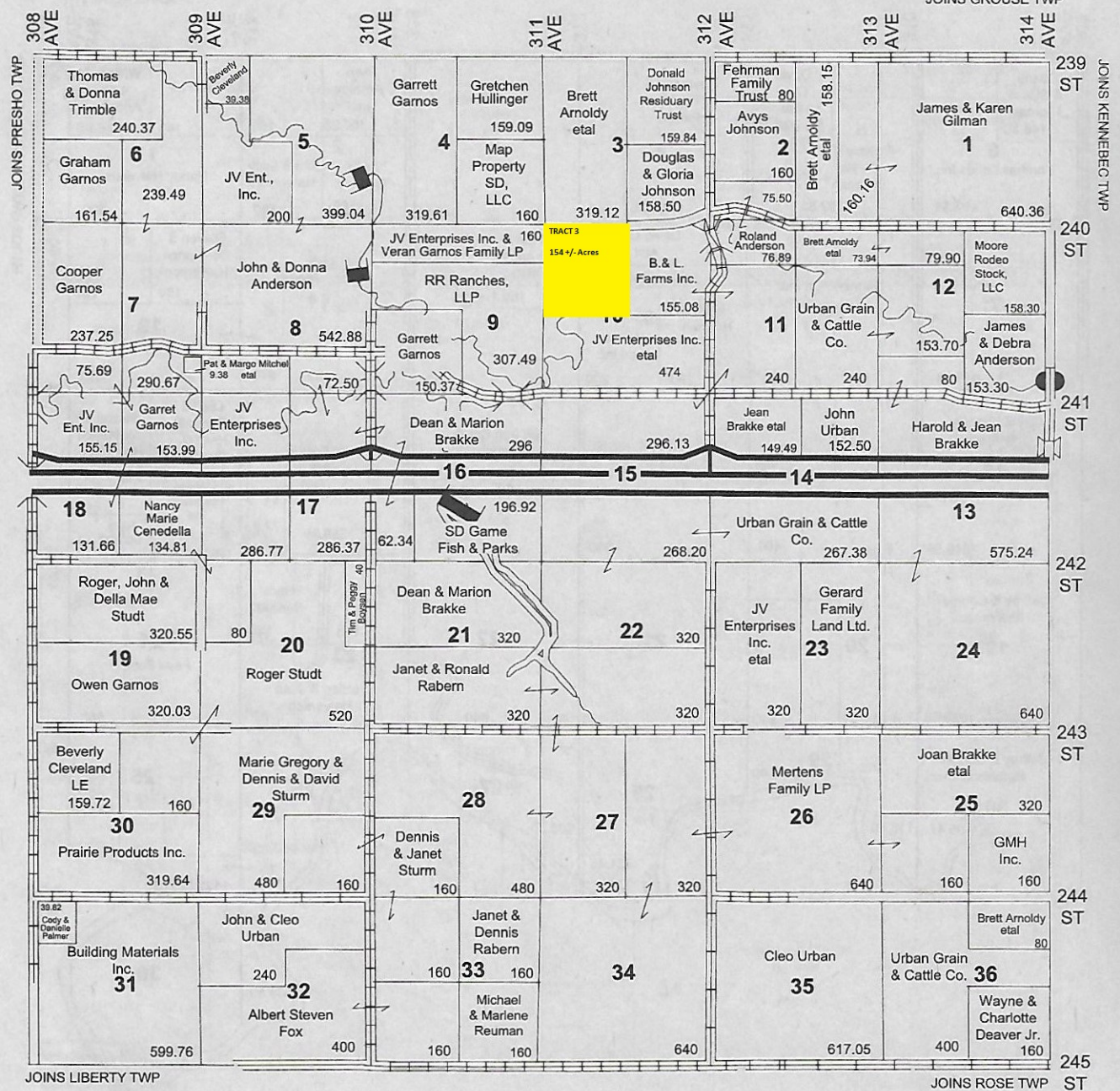
2175 per acre for one or both tracts

Tract 3 Supplement



SCAN ME





Aerial Map



©2019 AgriData, Inc.

www.shippyrealty.com

**SHIPPY
REALTY**

Winner, SD 605842-3212

Maps Provided By:



surety
CUSTOMIZED ONLINE MAPPING

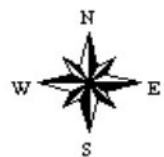
© AgriData, Inc. 2019

www.AgriDataInc.com

Map Center: 43° 54' 57.25, -99° 56' 26.23

0ft 443ft 886ft

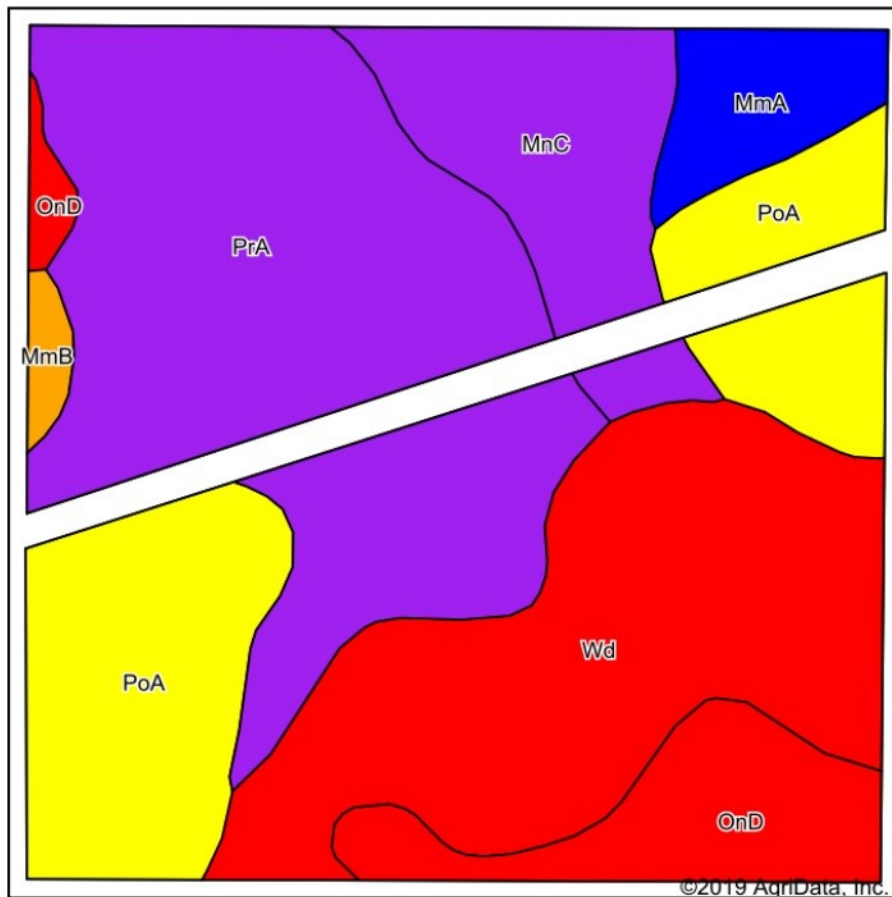
**10-105N-76W
Lyman County
South Dakota**



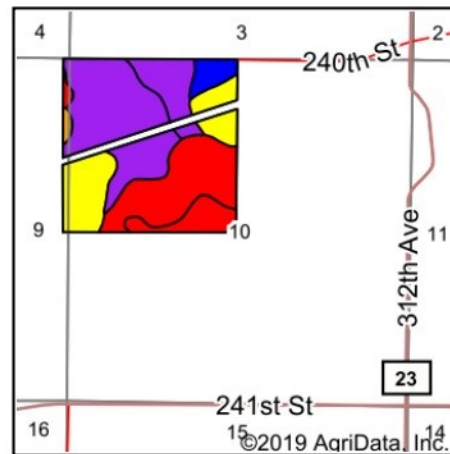
6/22/2020

Field borders provided by Farm Service Agency as of 5/21/2008.

Soils Map



Soils data provided by USDA and NRCS.



State: **South Dakota**
 County: **Lyman**
 Location: **10-105N-76W**
 Township: **South Lyman**
 Acres: **154.77**
 Date: **6/22/2020**



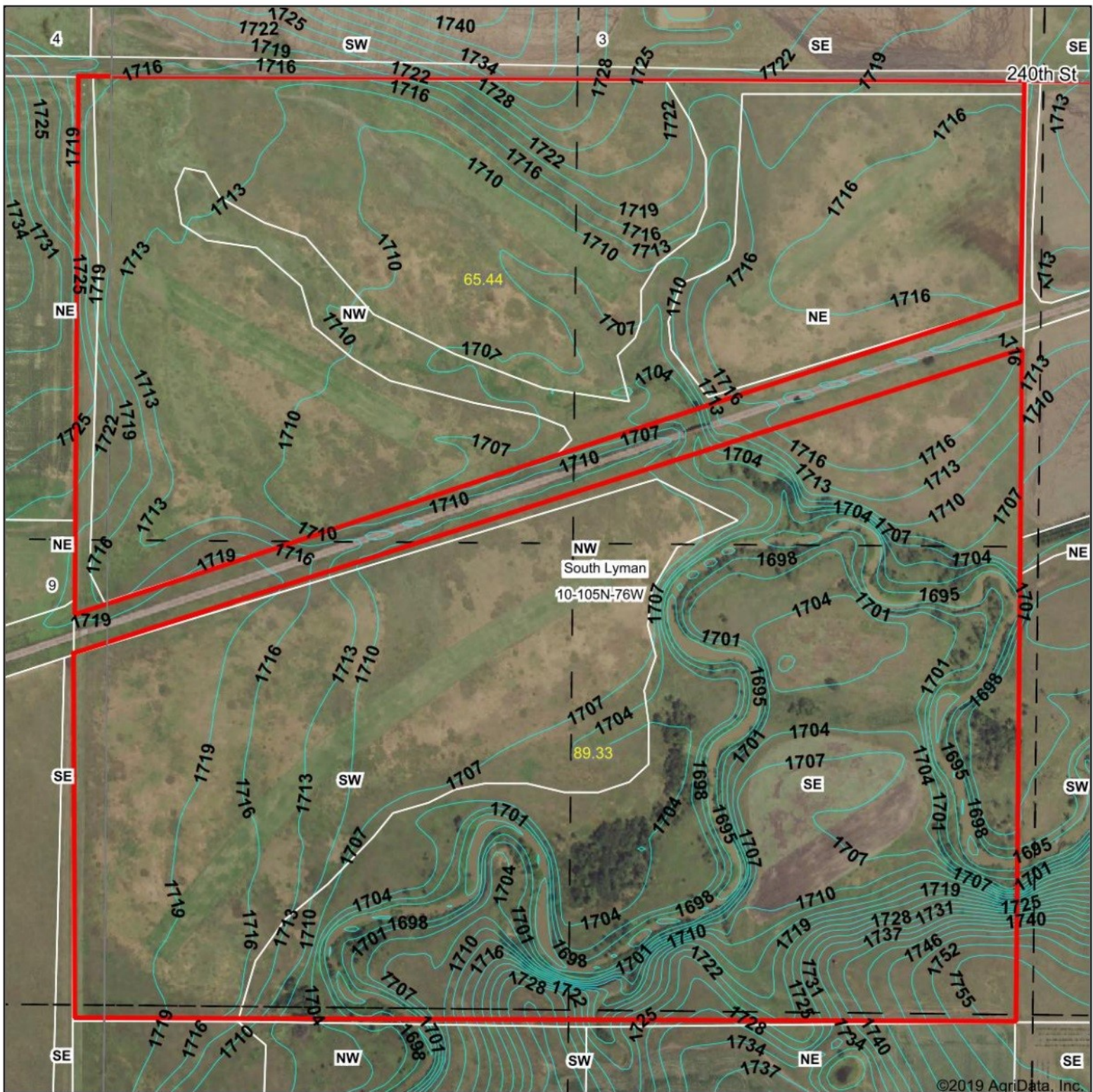
Area Symbol: SD085, Soil Area Version: 20

| Code | Soil Description | Acres | Percent of field | PI Legend | Non-Irr Class *c | Irr Class *c | Productivity Index | Alfalfa hay | Corn | Grain sorghum | Oats | Spring wheat | Tall wheatgrass | Winter wheat |
|------------------|--|-------|------------------|-----------|------------------|--------------|--------------------|-------------|------|---------------|------|--------------|-----------------|--------------|
| PrA | Promise-Capa complex, 0 to 4 percent slopes | 52.06 | 33.6% | | IIIIs | | 52 | 1.5 | 28 | 44 | 50 | 24 | 2.4 | 36 |
| Wd | Wendte silty clay, channeled | 38.26 | 24.7% | | VIW | | 33 | | | | | | 2.5 | |
| PoA | Promise clay, 0 to 3 percent slopes | 28.69 | 18.5% | | IIIIs | IIIIs | 68 | | | | | | | |
| MnC | Boro-Millboro silty clays, 6 to 9 percent slopes | 15.21 | 9.8% | | IVe | IVe | 56 | | | | | | | |
| OnD | Opal-Sansarc clays, 6 to 15% slopes | 12.65 | 8.2% | | VIe | VIe | 38 | | | | | | | |
| MmA | Millboro silty clay, 0 to 3 percent slopes | 6.51 | 4.2% | | IIs | IIs | 86 | | | | | | | |
| MmB | Millboro silty clay, 3 to 6 percent slopes | 1.39 | 0.9% | | IIIe | IIIe | 79 | | | | | | | |
| Weighted Average | | | | | | | 51.2 | 0.5 | 9.4 | 14.8 | 16.8 | 8.1 | 1.4 | 12.1 |

*c: Using Capabilities Class Dominant Condition Aggregation Method

Soils data provided by USDA and NRCS.

Topography Contours



©2019 AgriData, Inc.

www.shippyrealty.com

**SHIPPY
REALTY**

Winner, SD 605842-3212

Maps Provided By:

surety
CUSTOMIZED ONLINE MAPPING

© AgriData, Inc. 2019 www.AgriDataInc.com

Source: USGS 10 meter dem

Interval(ft): 3.0

Min: 1,691.0

Max: 1,757.3

Range: 66.3

Average: 1,712.6

Standard Deviation: 9.61 ft

0ft 438ft 875ft



6/22/2020

10-105N-76W
Lyman County
South Dakota

Map Center: 43° 54' 57.25, -99° 56' 26.23

Field borders provided by Farm Service Agency as of 5/21/2008.