



## Hebron Dunbar Road

Bennettsville, South Carolina 29512

Sale Price: \$37,845

Lot Size: 16.82 Acres

### Property Highlights

- 400 +/- feet of Frontage on Hebron Dunbar Rd
- 11 +/- tillable acres
- Very attractive area for a potential Homesite
- More land could be converted to Ag land
- Potential use as a dove field
- Timber has approximately 10 +/- years of natural regeneration growth in pine and hardwoods
- Sale Price: \$37,845 or \$2,250/ac

#### Tombo Milliken

O: 803 744 9852 | C: 803 206 8384  
tombo.milliken@naicolumbia.com

#### Tom Milliken

O: 803 744 9837 | C: 803 331 6999  
tmilliken@naicolumbia.com

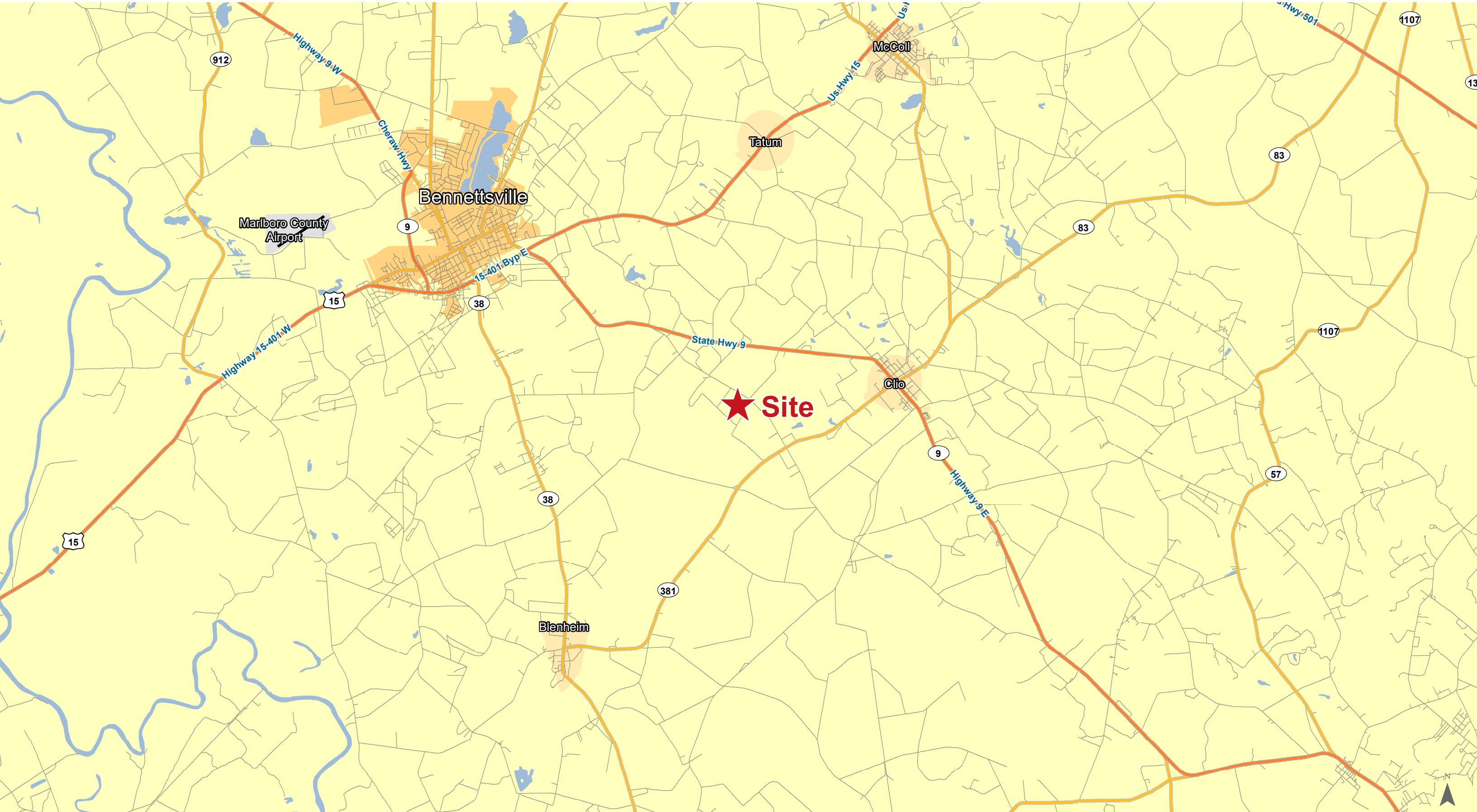
#### Nelson Weston, III

O: 803 744 9804 | C: 803 678 7346  
nweston@naicolumbia.com





Location

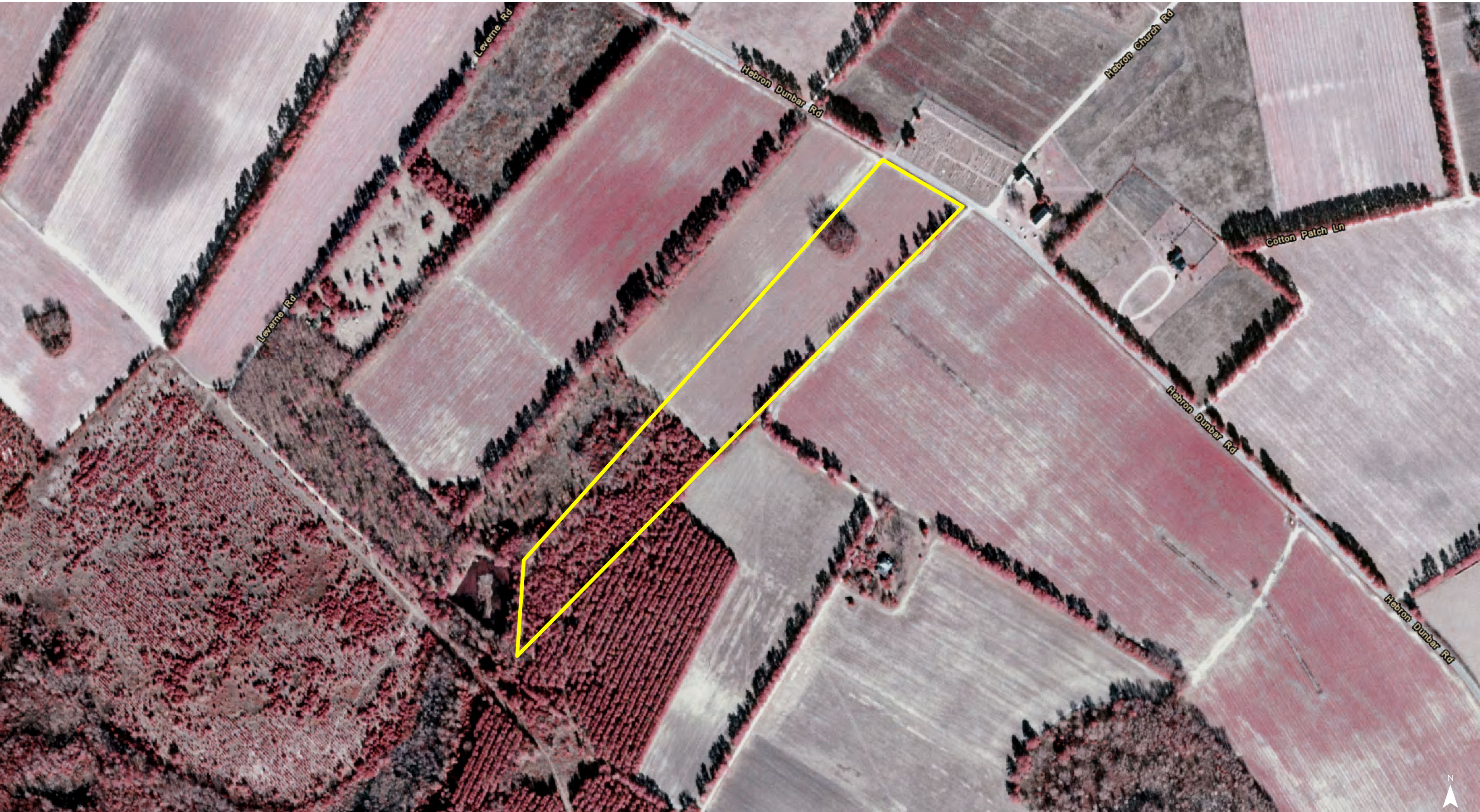


Map Updated: Thursday, January 9, 2020. This information submitted is not guaranteed. Although obtained from reliable sources, all information should be confirmed prior to use or reliance upon the information. This document may not be reproduced in whole or in part without the express written consent of NAI Avant.



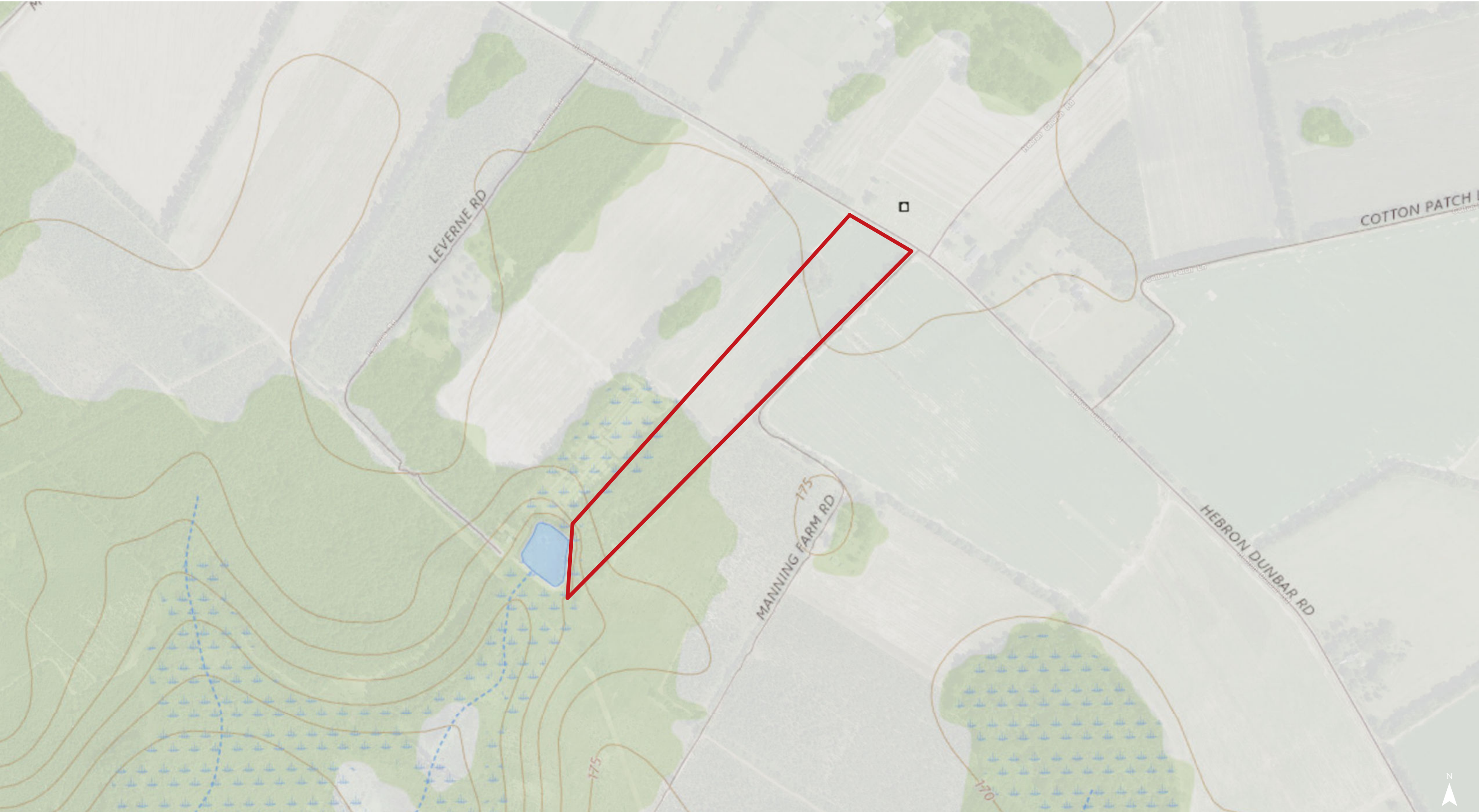






Map Updated: Thursday, January 9, 2020. This information submitted is not guaranteed. Although obtained from reliable sources, all information should be confirmed prior to use or reliance upon the information. This document may not be reproduced in whole or in part without the express written consent of NAI Avant.





Map Updated: Thursday, January 9, 2020. This information submitted is not guaranteed. Although obtained from reliable sources, all information should be confirmed prior to use or reliance upon the information. This document may not be reproduced in whole or in part without the express written consent of NAI Avant.





Map Updated: Thursday, January 9, 2020. This information submitted is not guaranteed. Although obtained from reliable sources, all information should be confirmed prior to use or reliance upon the information. This document may not be reproduced in whole or in part without the express written consent of NAI Avant.





Map Updated: Thursday, January 9, 2020. This information submitted is not guaranteed. Although obtained from reliable sources, all information should be confirmed prior to use or reliance upon the information. This document may not be reproduced in whole or in part without the express written consent of NAI Avant.





Map Updated: Thursday, January 9, 2020. This information submitted is not guaranteed. Although obtained from reliable sources, all information should be confirmed prior to use or reliance upon the information. This document may not be reproduced in whole or in part without the express written consent of NAI Avant.



Map Unit Description (Brief, Generated)

Marlboro County, South Carolina

[Minor map unit components are excluded from this report]

Map unit: BoB - Bonneau sand, 0 to 4 percent slopes

Component: Bonneau (90%)

*The Bonneau component makes up 90 percent of the map unit. Slopes are 0 to 4 percent. This component is on coastal plains, hills. The parent material consists of loamy marine deposits. Depth to a root restrictive layer is greater than 60 inches. The natural drainage class is somewhat excessively drained. Water movement in the most restrictive layer is moderately high. Available water to a depth of 60 inches is moderate. Shrink-swell potential is low. This soil is not flooded. It is not ponded. A seasonal zone of water saturation is at 42 inches during January, February, March, December. Organic matter content in the surface horizon is about 1 percent. Nonirrigated land capability classification is 2s. This soil does not meet hydric criteria.*

Map unit: Cx - Coxville loam

Component: Coxville (95%)

*The Coxville component makes up 95 percent of the map unit. Slopes are 0 to 2 percent. This component is on depressions, coastal plains. The parent material consists of clayey marine deposits. Depth to a root restrictive layer is greater than 60 inches. The natural drainage class is poorly drained. Water movement in the most restrictive layer is moderately high. Available water to a depth of 60 inches is high. Shrink-swell potential is moderate. This soil is not flooded. It is not ponded. A seasonal zone of water saturation is at 0 inches during January, February, March, April, November, December. Organic matter content in the surface horizon is about 3 percent. Nonirrigated land capability classification is 3w. This soil meets hydric criteria.*

Map unit: FaA - Faceville loamy sand, 0 to 2 percent slopes

Component: Faceville (95%)

*The Faceville component makes up 95 percent of the map unit. Slopes are 0 to 2 percent. This component is on hills, coastal plains. The parent material consists of clayey marine deposits. Depth to a root restrictive layer is greater than 60 inches. The natural drainage class is well drained. Water movement in the most restrictive layer is moderately high. Available water to a depth of 60 inches is moderate. Shrink-swell potential is low. This soil is not flooded. It is not ponded. There is no zone of water saturation within a depth of 72 inches. Organic matter content in the surface horizon is about 1 percent. Nonirrigated land capability classification is 1. This soil does not meet hydric criteria.*

Map unit: UgB - Uchee sand, 0 to 6 percent slopes

Component: Uchee (90%)

*The Uchee component makes up 90 percent of the map unit. Slopes are 0 to 6 percent. This component is on hills, coastal plains. The parent material consists of loamy fluviomarine deposits. Depth to a root restrictive layer is greater than 60 inches. The natural drainage class is well drained. Water movement in the most restrictive layer is moderately high. Available water to a depth of 60 inches is low. Shrink-swell potential is low. This soil is not flooded. It is not ponded. A seasonal zone of water saturation is at 42 inches during January, February, March, April. Organic matter content in the surface horizon is about 1 percent. Nonirrigated land capability classification is 2s. This soil does not meet hydric criteria.*