



FARM & RANCH

THIS 39.75 ACRE PROPERTY IS A TRUE GEM

TBD Kite Rd. – Mineral Wells, TX



STEPHEN
REICH GROUP
WILLIAMS TREW REAL ESTATE

Williamstrew[☆]

A DIVISION OF EBBY HALLIDAY REAL ESTATE, INC.

LISTED BY **STEPHEN REICH GROUP** OF WILLIAMS TREW REAL ESTATE

PROPERTY SUMMARY

DESCRIPTION

This 39.75 acre property is a true gem! Abundant hardwoods, a seasonal creek, and rolling terrain give the property endless opportunities for the pickiest of buyers. Seasonal creek has multiple pools holding water, and offers multiple opportunities to build a nice pond. Property is conveniently located close to Hwy 281 giving it great access, but is tucked away towards the end of a dead end road, giving it tons of seclusion. Up front you will find pipe fencing, sand loam soil, and a nice cultivated field. There is also a windmill sitting on top of an old well, that has potential to be put back in service. Tons of opportunities her to turn this gorgeous property into the property of your dreams!

LOCATION

CITY	Mineral Wells
County	Palo Pinto
Road Frontage	Asphalt/County
Schools:	Mineral Wells
Sale Type	LAND - F&R

OFFER SUMMARY

List Price	\$268,312
Lot Size	39.75 Acres
Utilities	No City Svcs, Septic Required
AG Exemption	Yes

HIGHLIGHTS

- ABUNDANT HARDWOODS
- SEASONAL CREEK
- AG EXEMPT
- PIPE FENCING
- NICE CULTIVATED FIELD
- SECLUSION

LISTING PRESENTED BY:



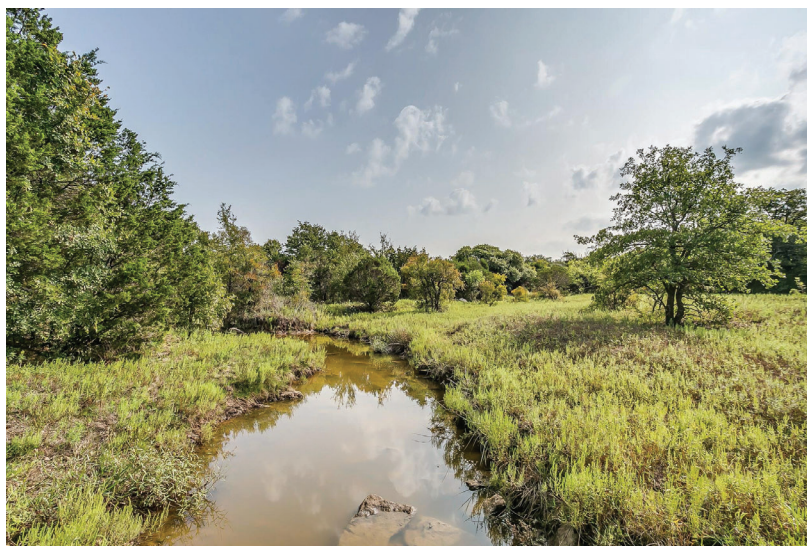
STEPHEN REICH
817-597-8884
stephen.reich@williamstrew.com

PARKER COUNTY OFFICE

405 S. FM 1187, STE. 400
ALED0, TX 76089

FARM & RANCH • RESIDENTIAL • COMMERCIAL-DEVELOPMENT • LAND

PROPERTY PHOTOS



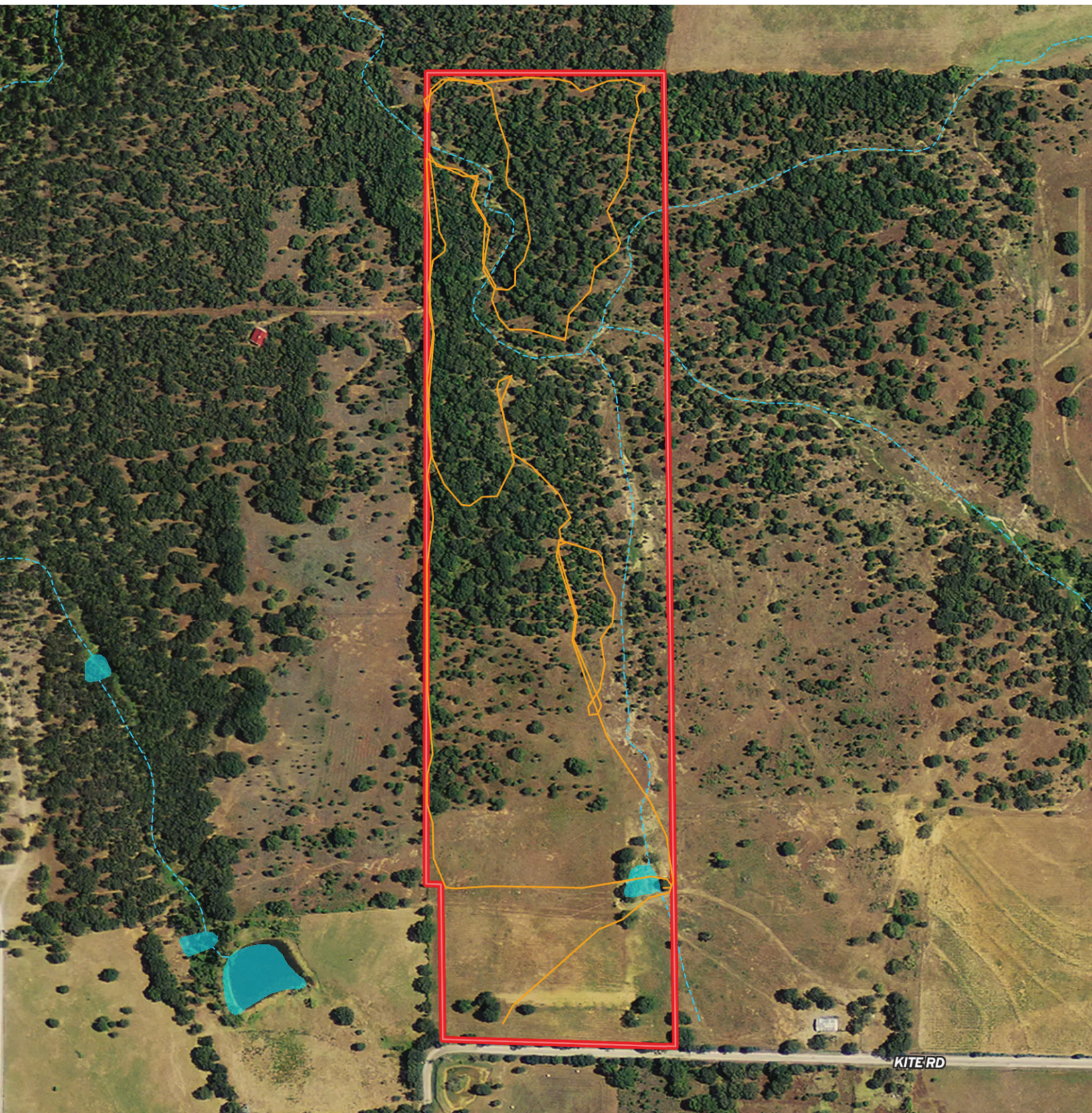
PROPERTY PHOTOS



STEPHEN REICH – 817.597.8884



AERIAL MAP



STEPHEN REICH – 817.597.8884



WilliamsTrew 
A DIVISION OF EBBY HALLIDAY REAL ESTATE, INC.

CONTOUR LINES & FLOODPLAIN

