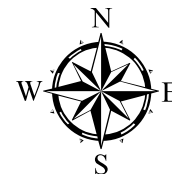


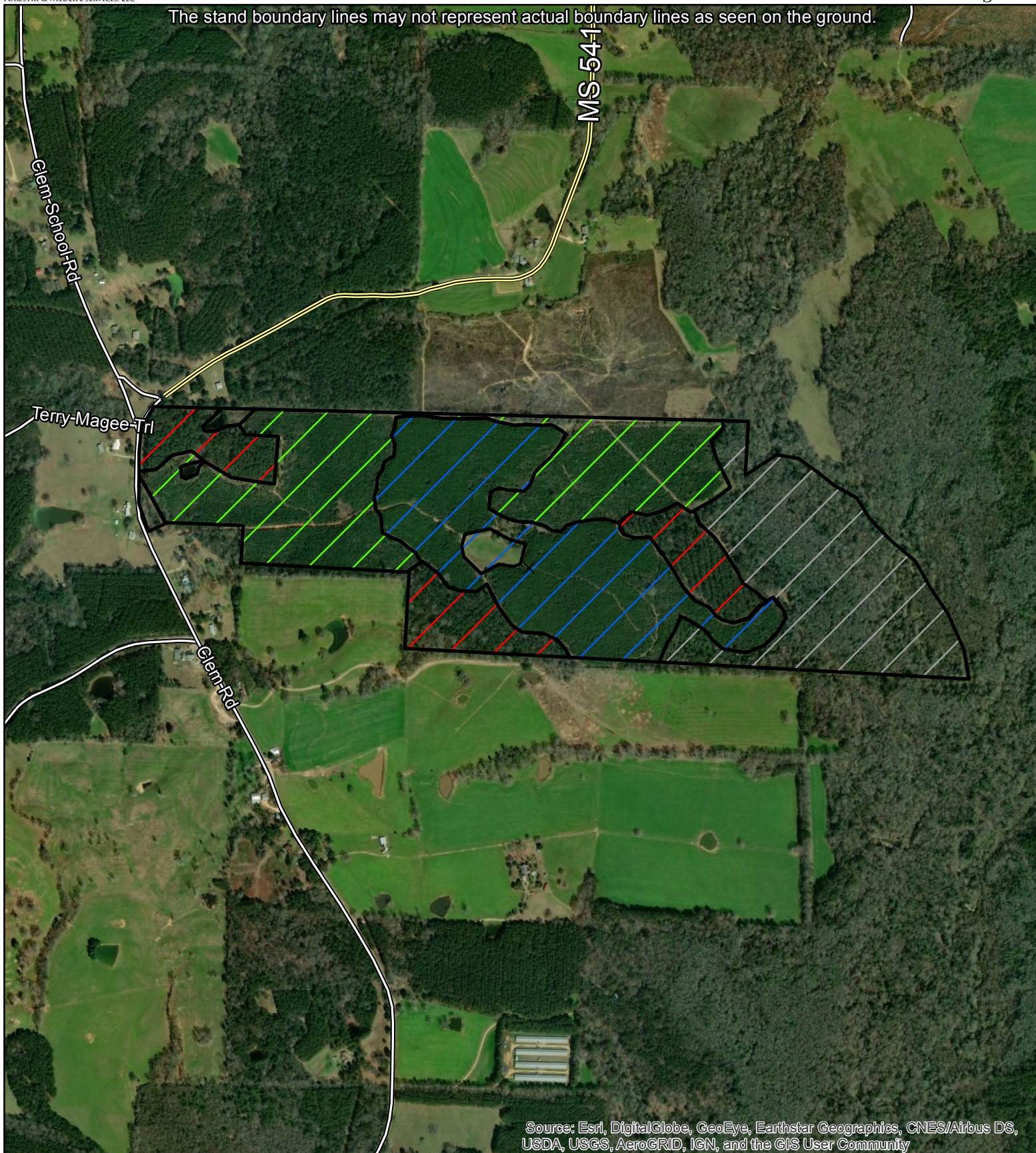


Magee

± 219 Acres in Sections 35 and 36 of T9N & R18W of
Jefferson Davis County, Mississippi



The stand boundary lines may not represent actual boundary lines as seen on the ground.



Source: Esri, DigitalGlobe, GeoEye, Earthstar Geographics, CNES/Airbus DS, USDA, USGS, AeroGRID, IGN, and the GIS User Community

Coordinate System: NAD 1983 UTM Zone 16N

Projection: Transverse Mercator

Center Coordinates: 31.7082 -89.7779 1 in = 1,000 ft

Date: 6/5/2020



Property



Stand2-64ac



Stand4-55ac



Stand1-30ac



Stand3-60ac