

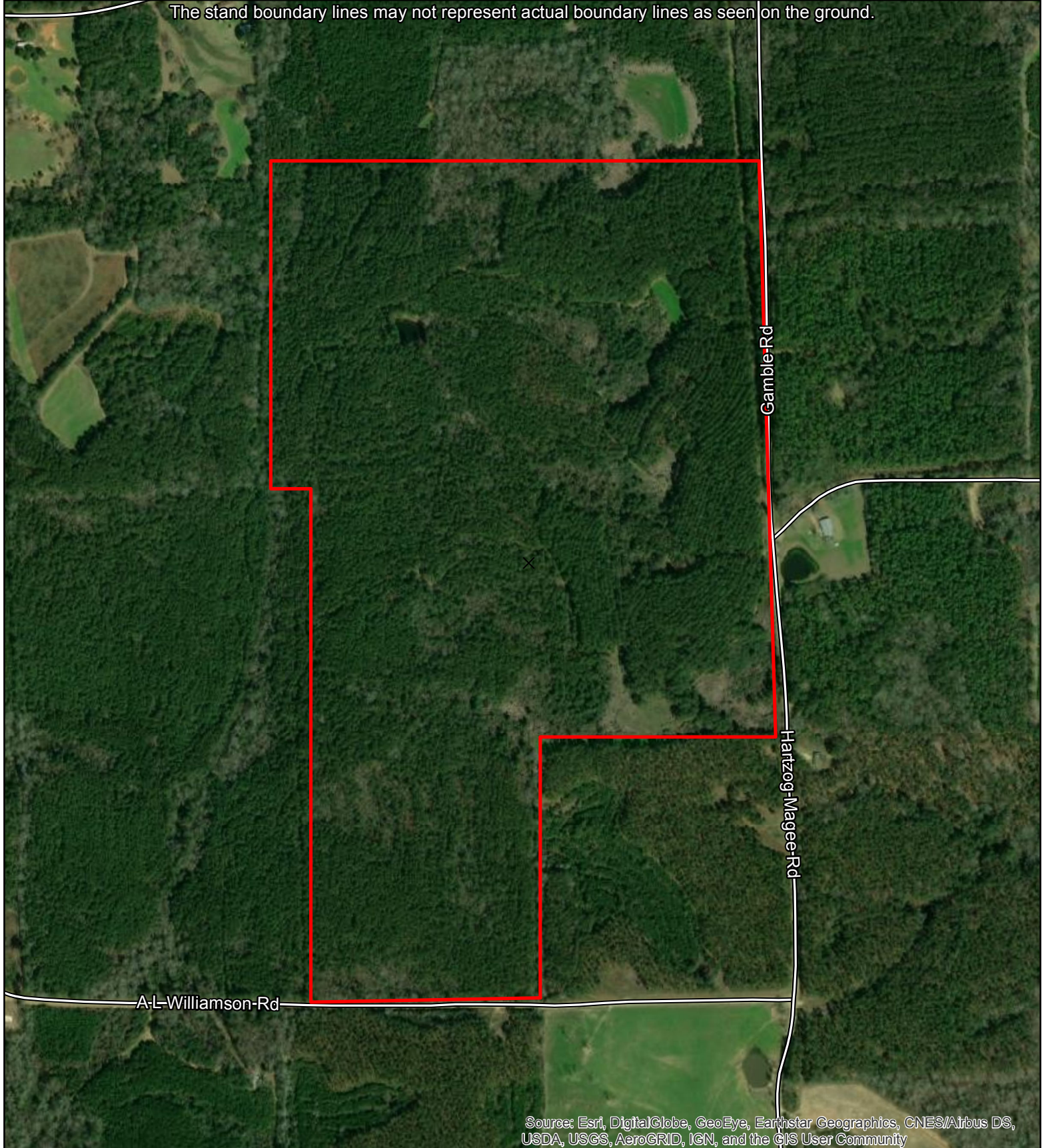


Williams Property

± 205 Acres in Section 33 of T9N & R18W and Section 4 of T8N & R18W
of Jefferson Davis County, Mississippi



The stand boundary lines may not represent actual boundary lines as seen on the ground.



Source: Esri, DigitalGlobe, GeoEye, Earthstar Geographics, CNES/Airbus DS, USDA, USGS, AeroGRID, IGN, and the GIS User Community

Coordinate System: NAD 1983 UTM Zone 15N
Projection: Transverse Mercator
Center Coordinates: 31.6960 -89.8147
Date: 9/1/2020

1 in = 660 ft
0 330 660 990 1,320

 Property