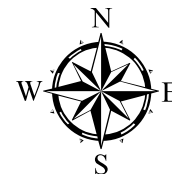


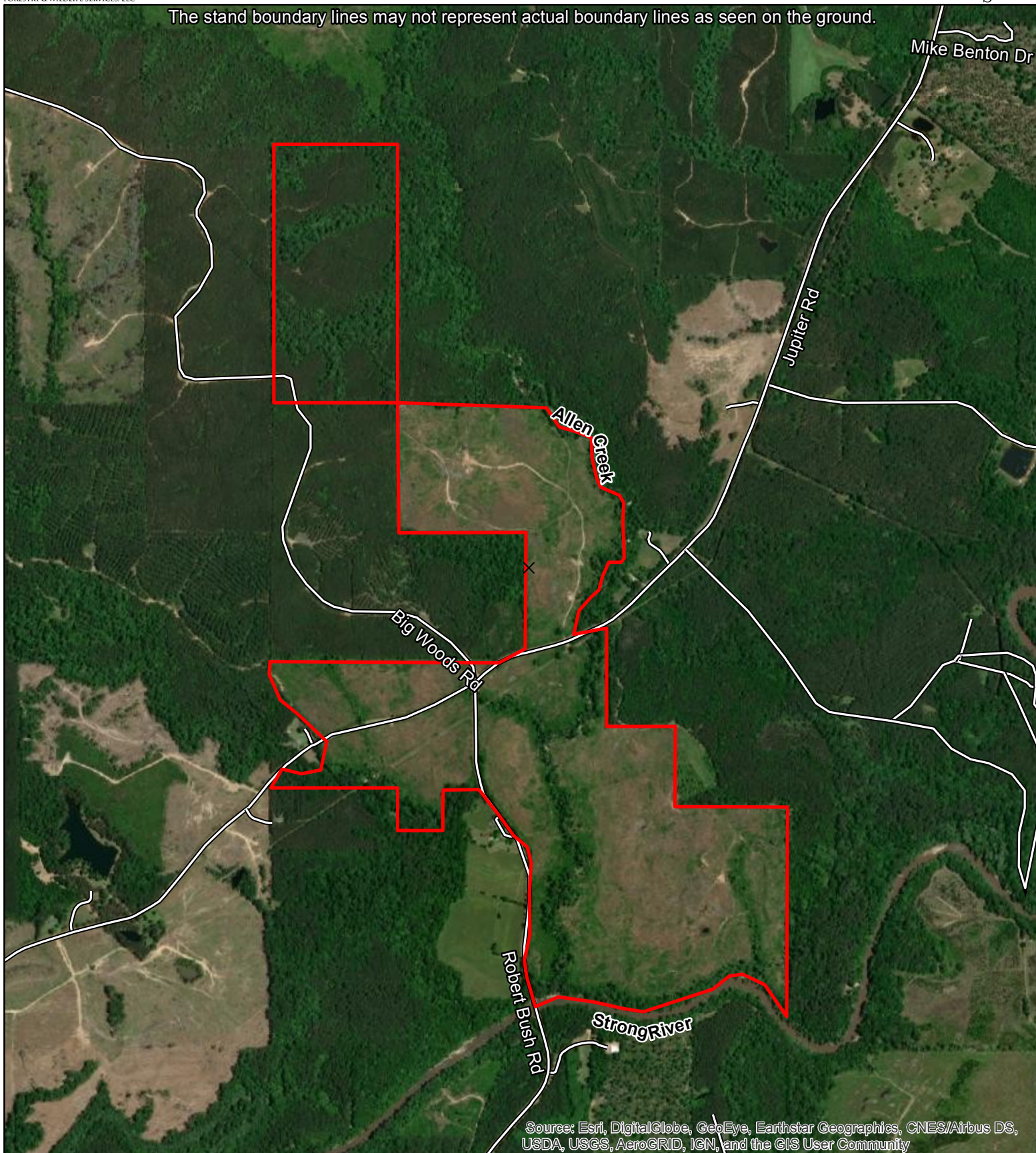


Allen Property

± 400 Acres in Sections 14, 23 ,and 26 of T1N & R3E of
Simpson County, Mississippi



The stand boundary lines may not represent actual boundary lines as seen on the ground.



Source: Esri, DigitalGlobe, GeoEye, Earthstar Geographics, CNES/Airbus DS, USDA, USGS, AeroGRID, IGN, and the GIS User Community

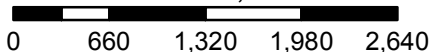
Coordinate System: NAD 1983 StatePlane Mississippi West FIPS 2302 Feet

Projection: Transverse Mercator

Center Coordinates: 31.9127 -89.9629

Date: 10/5/2020

1 in = 1,320 ft



Property