

20 Acres – Brewster, WA Mapped Directions:

4WD Recommended in Snow, otherwise, **very accessible via car or SUV/Truck**. From US-97 in Brewster, WA, head north on 1685 / Indian Dan Rd for 3.6 miles. Turn right onto Harmony Heights Rd. for 3 miles. Instead of turning left to stay on Harmony Heights Rd (N) or keeping straight to Cielo Circle (E), take a right on Windmill for 0.78 miles south as it curves to the east again until you get to a right hand turn. There is no sign at this intersection but take that right hand turn and continue south for 0.26 miles and then take a left. As you are driving you will see the house up at the top of the hill. Continue on this road for only 0.3 miles to your property! **(See below for hiking directions to the cistern and year-round stream/spring).**

GPS Corner Coordinates:

NW: 48.1143969041584,-119.813994755638

SW: 48.1126874388965,-119.813990708176

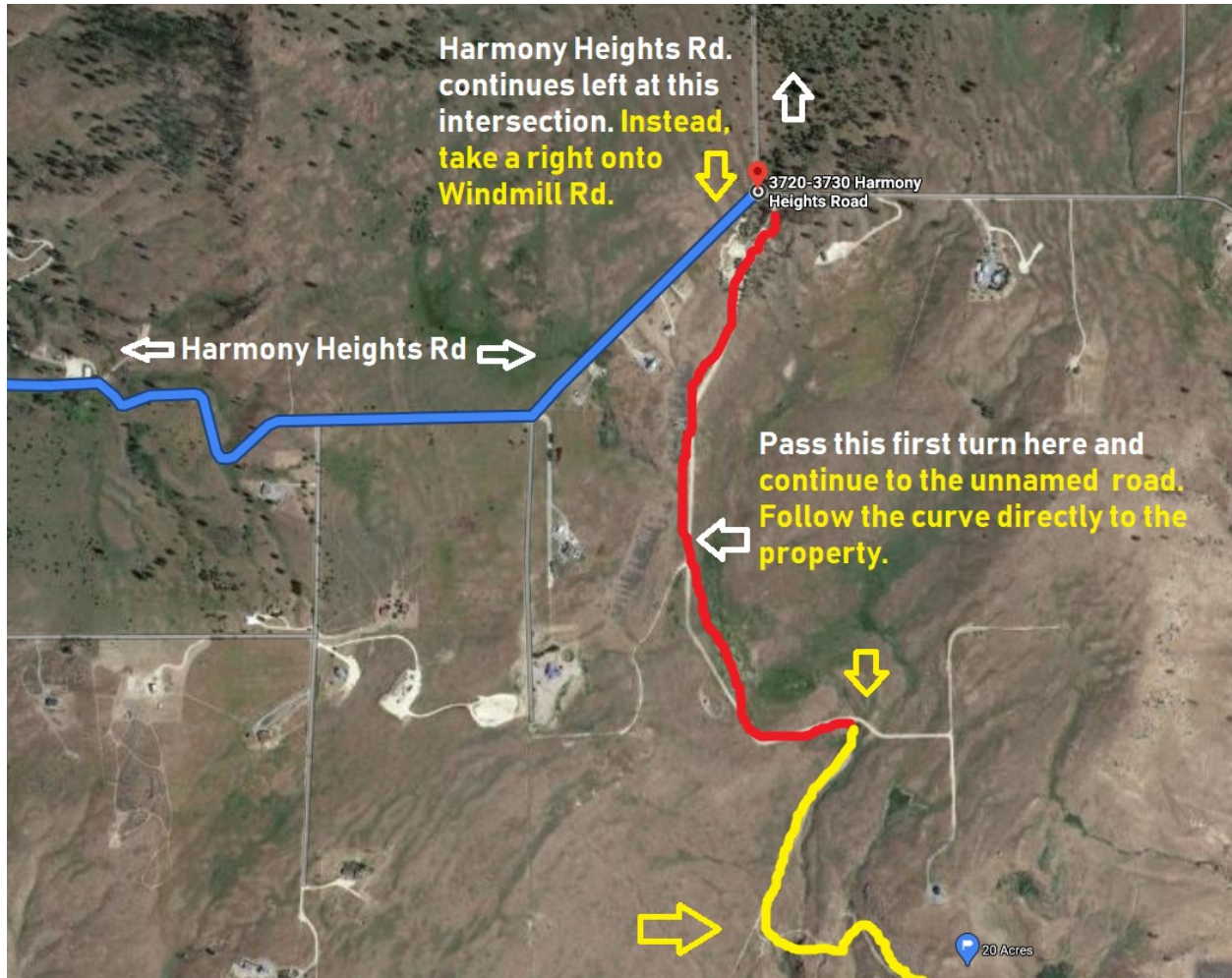
SE: 48.1126495969616,-119.808587335046

NE: 48.1144203198889,-119.808591008902

Mapped overview from 1685 / Indian Dan Rd. to the property:



Close-up from Harmony Heights Rd. to right turn onto Windmill Rd.



See the arrow showing the turnoff from Harmony Heights Rd., south to Windmill Rd.

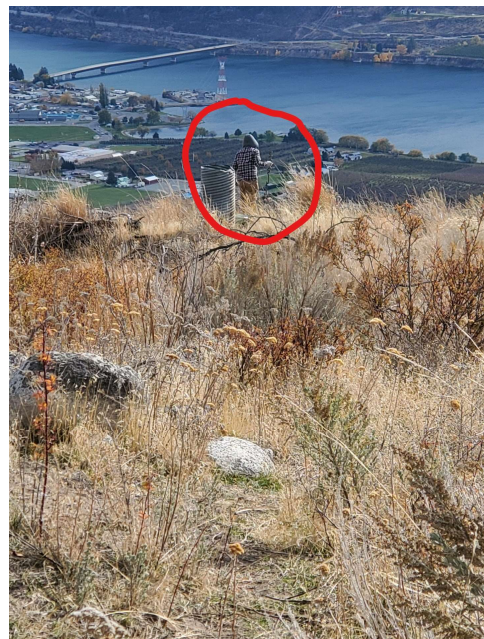


The road you take when you turn off Windmill Rd. You can see the For Sale sign as you continue.

How to Find the Cistern and Year-Spring!



Park near this rock pile and walk down the hill to the right towards the large fir tree. Find the large tube and head in that direction.





The cistern and the stream are near the big fir tree. You will see some trees cut down to about 4-5 ft and the cistern is in this area.

There is also a large boulder in the area about 5 ft high with rocks stacked on top of it. A path has been made to find the stream.



Cistern featured above and stream / spring shown at left. Be sure to watch out for deer and much more wildlife!