

# ±259.80 ACRES FOR SALE

Goldmine Road, Pacolet, SC 29372



## Goldmine Road Tract

- Spartanburg County Tax Map # 3-28-00-087.00
- Asking Price: \$3,462/acre
- Subdivided opportunities are available
- Excellent hunting, investment, and recreational opportunities
- A three quarter mile portion of the western boundary line consists of a very nice, mature hardwood creek bottom
- Approximately 1.8 miles of total road frontage (+-0.2 on S. Pine Street, +-0.2 on W. Main Street, +- 1.4 on Goldmine Road)
- Excellent visibility from a four lane highway
- Located at a four way traffic light intersection
- The property is located +/-15 minutes from downtown Spartanburg



✉ Rusty Hamrick  
+1 864 232 9040  
rhamrick@naiearlefurman.com

No Warranty Or Representation, Express Or Implied, Is Made As To The Accuracy Of The Information Contained Herein. And The Same Is Submitted Subject To Errors, Omissions, Change Of Price, Rental Or Other Conditions, Prior Sale, Lease Or Financing, Or Withdrawal Without Notice, And Of Any Special Listing Conditions Imposed By Our Principals No Warranties Or Representations Are Made As To The Condition Of The Property Or Any Hazards Contained Therein Are Any To Be Implied.

📍 101 E Washington St  
Greenville, SC 29601  
naief.com



# Property Description

Goldmine Road Pacolet, SC 29372



## Property Overview

The Goldmine Road tract is an excellent opportunity for a quality sized hunting and recreational property with investment potential located a short fifteen minute drive from downtown Spartanburg. Another great feature is tremendous road frontage (almost 2 miles) including frontage on a four lane highway (S. Pine Street) at a four way traffic light intersection. A beautiful hardwood creek bottom runs for 3/4 of a mile along the western boundary line and two power ROWs run through the north and south end of the property as well. A trail system offers quality access and the Pacolet River is just over a mile away as the crow flies.



**Rusty Hamrick**  
+1 864 232 9040  
rhamrick@naiearlefurman.com

No Warranty Or Representation, Express Or Implied, Is Made As To The Accuracy Of The Information Contained Herein, And The Same Is Submitted Subject To Errors, Omissions, Change Of Price, Rental Or Other Conditions, Prior Sale, Lease Or Financing, Or Withdrawal Without Notice, And Of Any Special Listing Conditions Imposed By Our Principals No Warranties Or Representations Are Made As To The Condition Of The Property Or Any Hazards Contained Therein Are Any To Be Implied.





# Property Photographs

Goldmine Road Pacolet, SC 29372



**Rusty Hamrick**  
+1 864 232 9040  
[rahamrick@naiearlefurman.com](mailto:rahamrick@naiearlefurman.com)

No Warranty Or Representation, Express Or Implied, Is Made As To The Accuracy Of The Information Contained Herein, And The Same Is Submitted Subject To Errors, Omissions, Change Of Price, Rental Or Other Conditions, Prior Sale, Lease Or Financing, Or Withdrawal Without Notice, And Of Any Special Listing Conditions Imposed By Our Principals No Warranties Or Representations Are Made As To The Condition Of The Property Or Any Hazards Contained Therein Are Any To Be Implied.





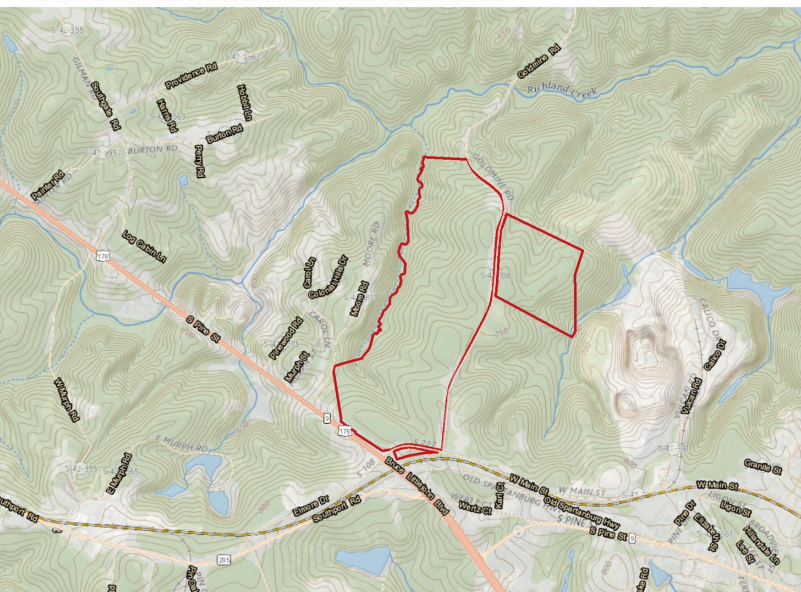
# Map Set

Goldmine Road Pacolet, SC 29372

2006 Infrared



Topographical Map



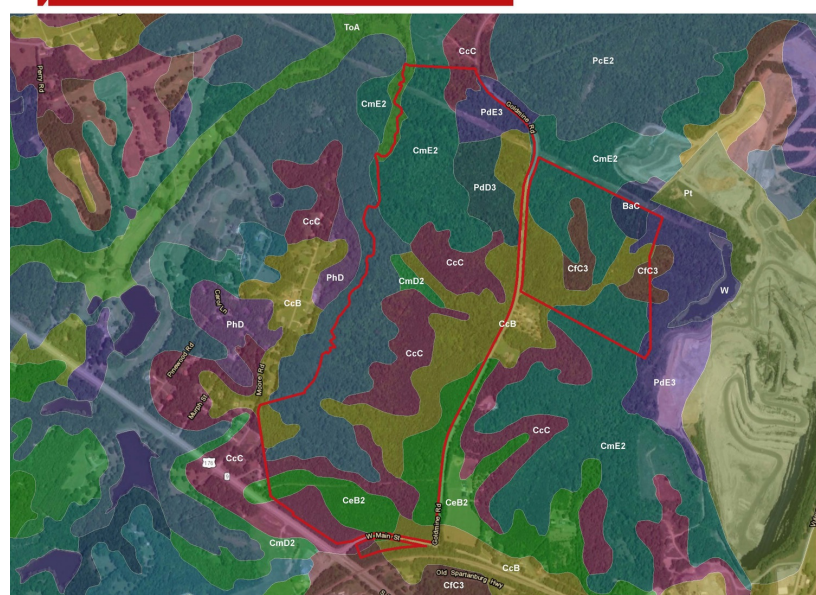
FEMA Flood Zones



National Wetlands Inv.



Soil Survey



**Rusty Hamrick**  
+1 864 232 9040  
rhamrick@naiearlefurman.com

No Warranty Or Representation, Express Or Implied, Is Made As To The Accuracy Of The Information Contained Herein, And The Same Is Submitted Subject To Errors, Omissions, Change Of Price, Rental Or Other Conditions, Prior Sale, Lease Or Financing, Or Withdrawal Without Notice, And Of Any Special Listing Conditions Imposed By Our Principals No Warranties Or Rep-resentations Are Made As To The Condition Of The Property Or Any Hazards Contained Therein Are Any To Be Implied.

