

## County Line Rd. - 206 Acres

Jamestown, South Carolina 29510

### Property Highlights

- 2,000+/- ft of Santee River frontage
- 51 +/- Ac of Natural Pines (1992: 10 Ac; 1994: 41 Ac)
- 88 +/- Ac of Bottomland Hardwood (1970: 8 Ac; 2005: 80 Ac)
- 47 +/- Ac of Cypress-Tupelo (2007)
- Good tract for hunting deer, ducks, turkey, hogs and other small game
- 150' Power Line Easement running along the eastern boundary where food plots can be planted
- Good road system in place throughout the property, including a "River Road" with an opportunity to establish more

### For More Information

#### Tombo Milliken

O: 803 744 9852 | C: 803 206 8384  
tombo.milliken@naicolumbia.com

#### Tom Milliken

O: 803 744 9837 | C: 803 331 6999  
tmilliken@naicolumbia.com

#### Nelson Weston, III

O: 803 744 9804 | C: 803 678 7346  
nweston@naicolumbia.com



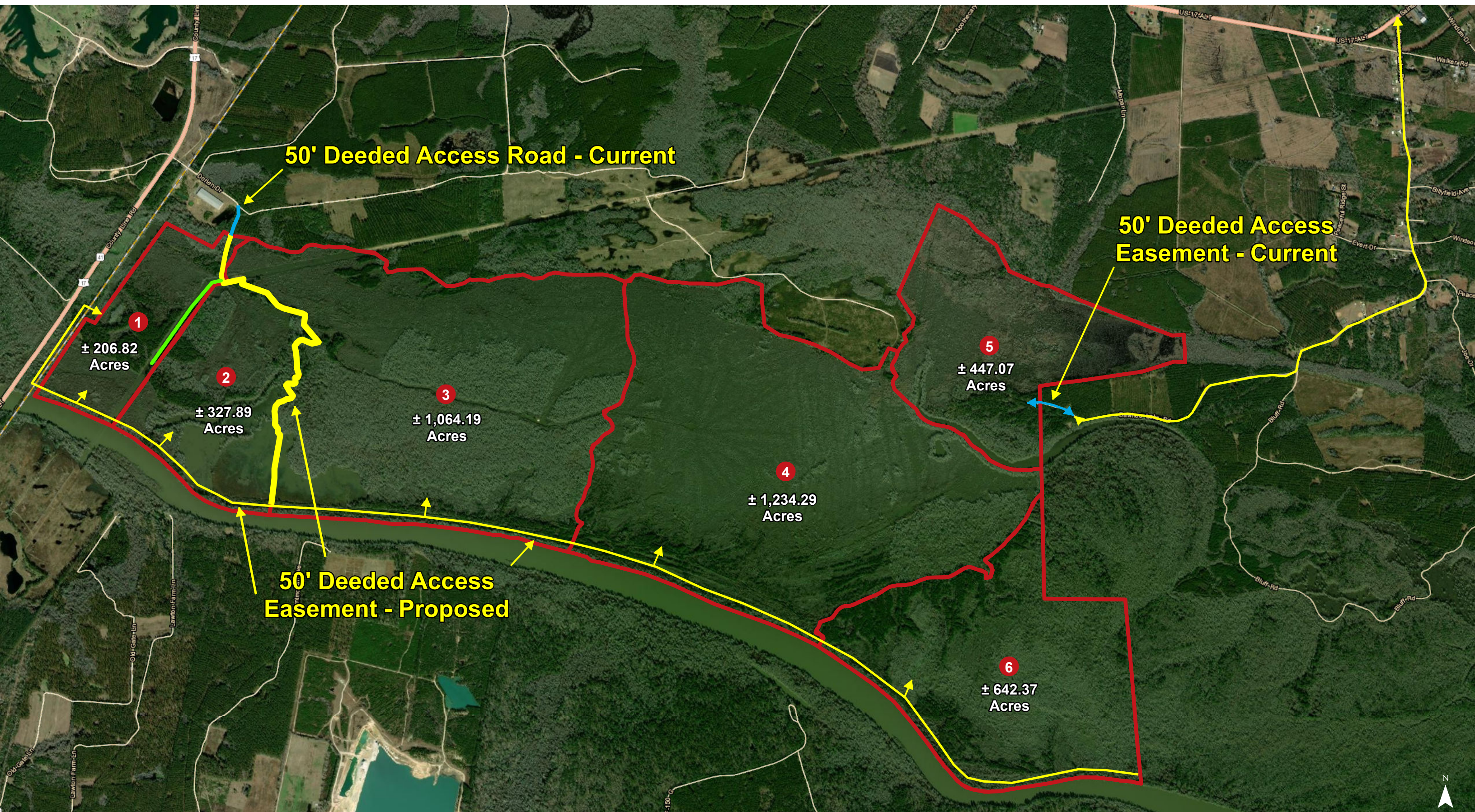




We obtained the information above from sources we believe to be reliable. However, we have not verified its accuracy and make no guarantee, warranty or representation about it. It is submitted subject to the possibility of errors, omissions, change of price, rental or other conditions, prior sale, lease or financing, or withdrawal without notice. We include projections, opinions, assumptions or estimates for example only, and they may not represent current or future performance of the property. You and your tax and legal advisors should conduct your own investigation of the property and transaction.

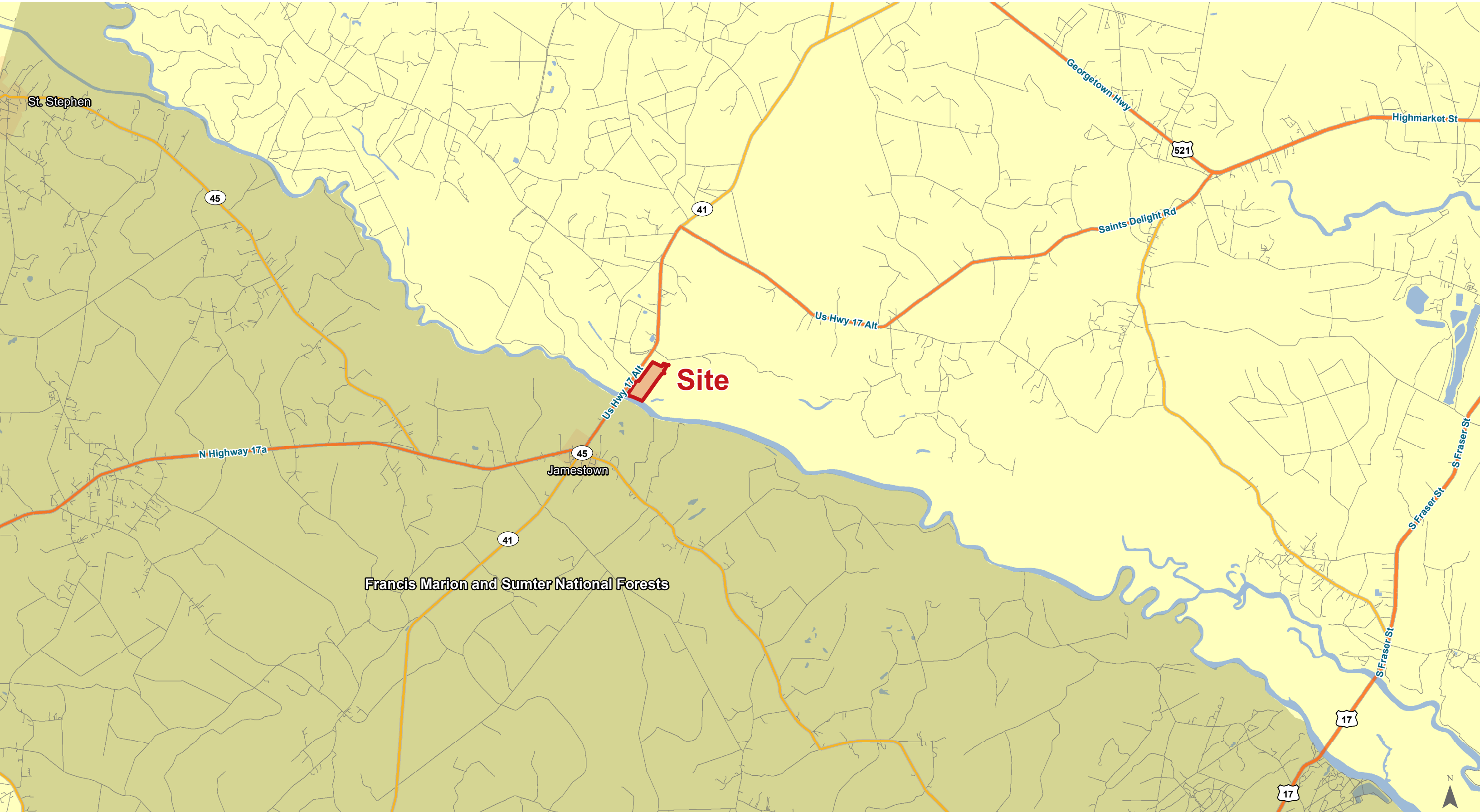
807 Gervais Street, Suite 200  
Columbia, SC 29201  
803 254 0100 tel  
[naicolumbia.com](http://naicolumbia.com)





Map Updated: Wednesday, December 2, 2020. This information submitted is not guaranteed. Although obtained from reliable sources, all information should be confirmed prior to use or reliance upon the information. This document may not be reproduced in whole or in part without the express written consent of NAI Columbia.





Map Updated: Monday, November 9, 2020. This information submitted is not guaranteed. Although obtained from reliable sources, all information should be confirmed prior to use or reliance upon the information. This document may not be reproduced in whole or in part without the express written consent of NAI Columbia.





Map Updated: Monday, November 9, 2020. This information submitted is not guaranteed. Although obtained from reliable sources, all information should be confirmed prior to use or reliance upon the information. This document may not be reproduced in whole or in part without the express written consent of NAI Columbia.



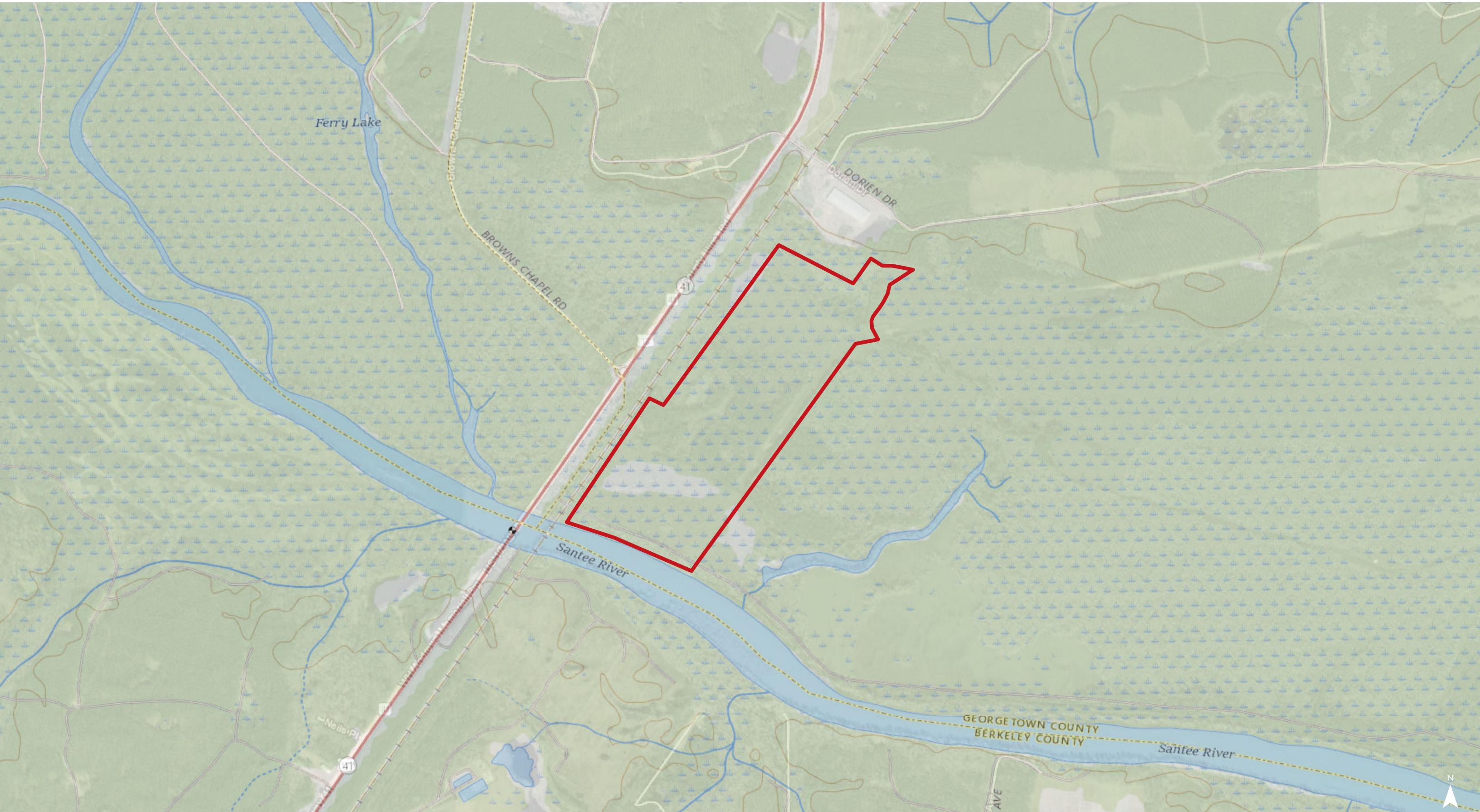
## Area 1 - Timber Breakdown



Map Updated: Tuesday, November 17, 2020. This information submitted is not guaranteed. Although obtained from reliable sources, all information should be confirmed prior to use or reliance upon the information. This document may not be reproduced in whole or in part without the express written consent of NAI Columbia.

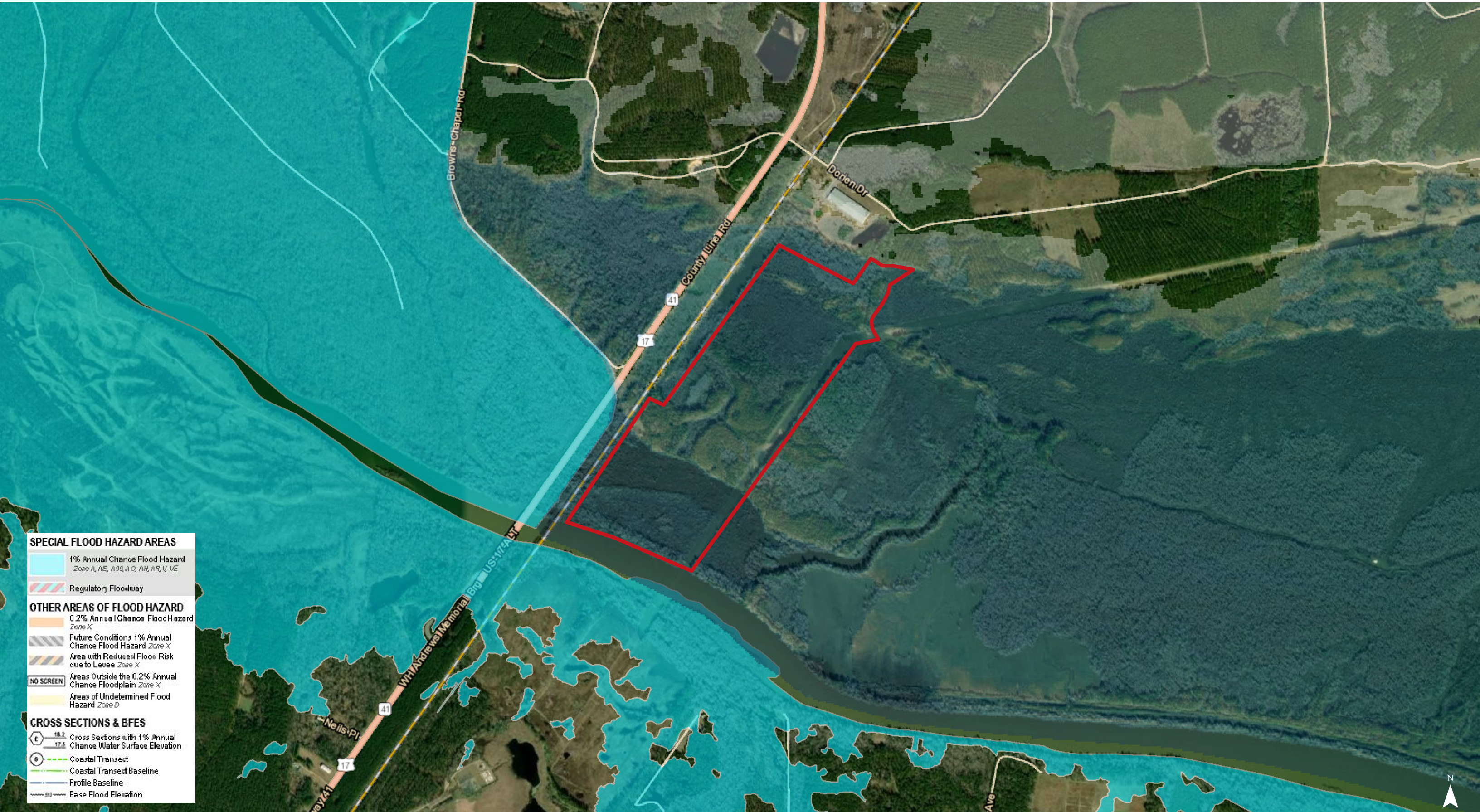


# Topographical Map



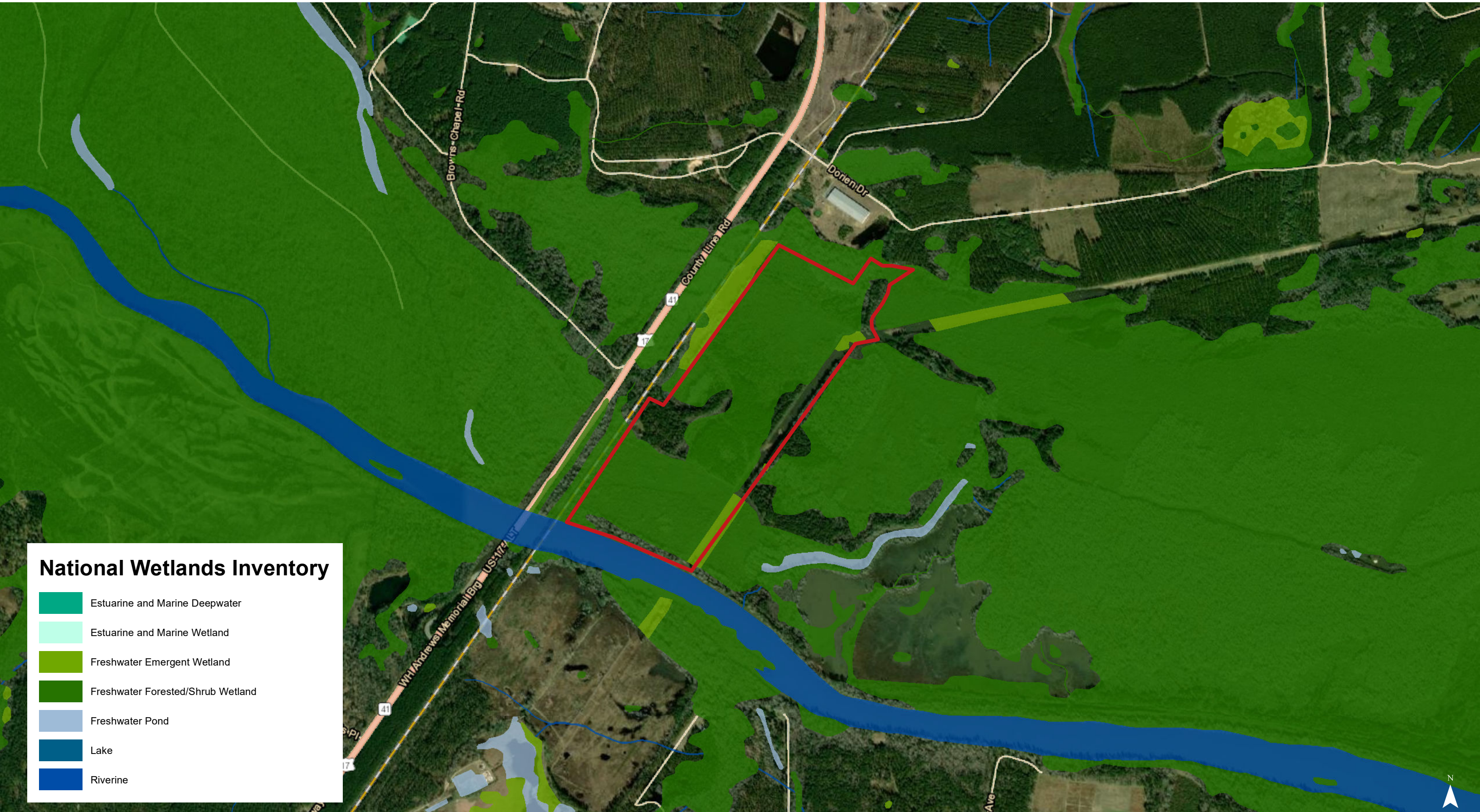
Map Updated: Monday, November 9, 2020. This information submitted is not guaranteed. Although obtained from reliable sources, all information should be confirmed prior to use or reliance upon the information. This document may not be reproduced in whole or in part without the express written consent of NAI Columbia.





Map Updated: Monday, November 9, 2020. This information submitted is not guaranteed. Although obtained from reliable sources, all information should be confirmed prior to use or reliance upon the information. This document may not be reproduced in whole or in part without the express written consent of NAI Columbia.





Map Updated: Monday, November 9, 2020. This information submitted is not guaranteed. Although obtained from reliable sources, all information should be confirmed prior to use or reliance upon the information. This document may not be reproduced in whole or in part without the express written consent of NAI Columbia.





Map Updated: Monday, November 9, 2020. This information submitted is not guaranteed. Although obtained from reliable sources, all information should be confirmed prior to use or reliance upon the information. This document may not be reproduced in whole or in part without the express written consent of NAI Columbia.



Map Unit Description (Brief, Generated)

Georgetown County, South Carolina

[Minor map unit components are excluded from this report]

Map unit: 36B - Lakeland fine sand, 0 to 6 percent slopes

Component: Lakeland (100%)

*The Lakeland component makes up 100 percent of the map unit. Slopes are 0 to 6 percent. This component is on coastal plains, flats. The parent material consists of sandy marine deposits. Depth to a root restrictive layer is greater than 60 inches. The natural drainage class is excessively drained. Water movement in the most restrictive layer is high. Available water to a depth of 60 inches is low. Shrink-swell potential is low. This soil is not flooded. It is not ponded. There is no zone of water saturation within a depth of 72 inches. Organic matter content in the surface horizon is about 1 percent. Nonirrigated land capability classification is 4s. This soil does not meet hydric criteria.*

Map unit: W - Water

Component: Water (100%)

*Generated brief soil descriptions are created for major soil components. The Water is a miscellaneous area.*