

County Line Rd. - 328 Acres

Jamestown, South Carolina 29510

Property Highlights

- 4,350 +/- ft of Santee River frontage
- 12 +/- Ac Oxbow Lake giving plenty of opportunity to fish for Bass, Striper, Bream, Catfish, Redbreast and Shad
- Oxbow Lake is known for consistent duck hunting
- Good tract for hunting deer, ducks, turkey, hogs and other small game
- 36 +/- Ac of Natural Pine (1977: 10 Ac; 1994: 26 Ac)
- 97 +/- Ac of Bottomland Hardwood (1970: 30 Ac; 1984: 57 Ac; 2010: 6 Ac; 2014: 4 Ac)
- 90 +/- Ac of Cypress-Tupelo (2007)
- 90 +/- Ac of Planted Pines (2017)
- A few established game viewing areas throughout the property
- Great established road/trail system
- Established site for shed or "off grid" cabin along the river

For More Information

Tombo Milliken

O: 803 744 9852 | C: 803 206 8384
tombo.milliken@naicolumbia.com

Tom Milliken

O: 803 744 9837 | C: 803 331 6999
tmilliken@naicolumbia.com

Nelson Weston, III

O: 803 744 9804 | C: 803 678 7346
nweston@naicolumbia.com



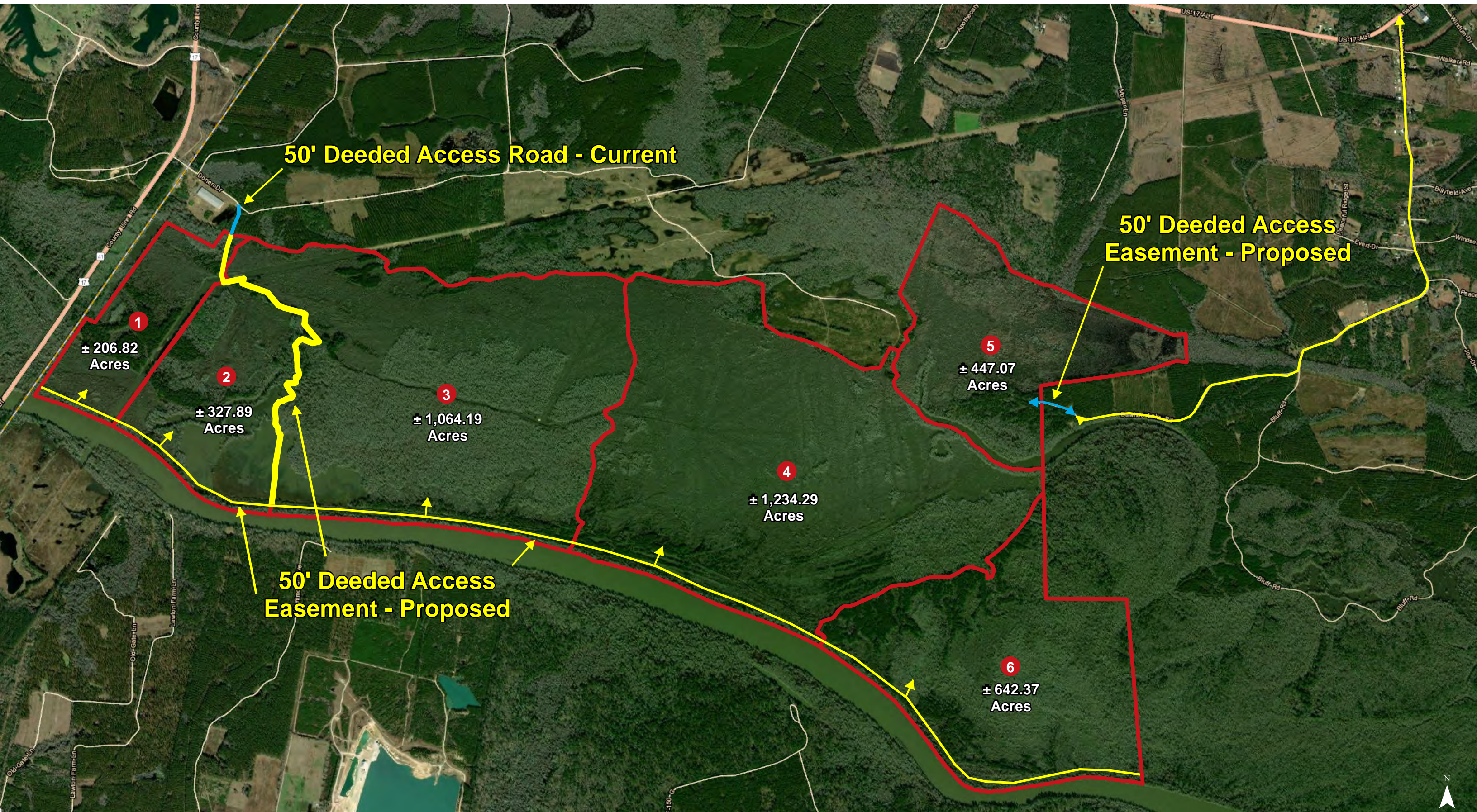
For Sale

\$713,728 or \$2,176 / AC
Recreational Land



We obtained the information above from sources we believe to be reliable. However, we have not verified its accuracy and make no guarantee, warranty or representation about it. It is submitted subject to the possibility of errors, omissions, change of price, rental or other conditions, prior sale, lease or financing, or withdrawal without notice. We include projections, opinions, assumptions or estimates for example only, and they may not represent current or future performance of the property. You and your tax and legal advisors should conduct your own investigation of the property and transaction.

807 Gervais Street, Suite 200
Columbia, SC 29201
803 254 0100 tel
naicolumbia.com



Map Updated: Monday, November 9, 2020. This information submitted is not guaranteed. Although obtained from reliable sources, all information should be confirmed prior to use or reliance upon the information. This document may not be reproduced in whole or in part without the express written consent of NAI Columbia.



Map Updated: Monday, November 9, 2020. This information submitted is not guaranteed. Although obtained from reliable sources, all information should be confirmed prior to use or reliance upon the information. This document may not be reproduced in whole or in part without the express written consent of NAI Columbia.



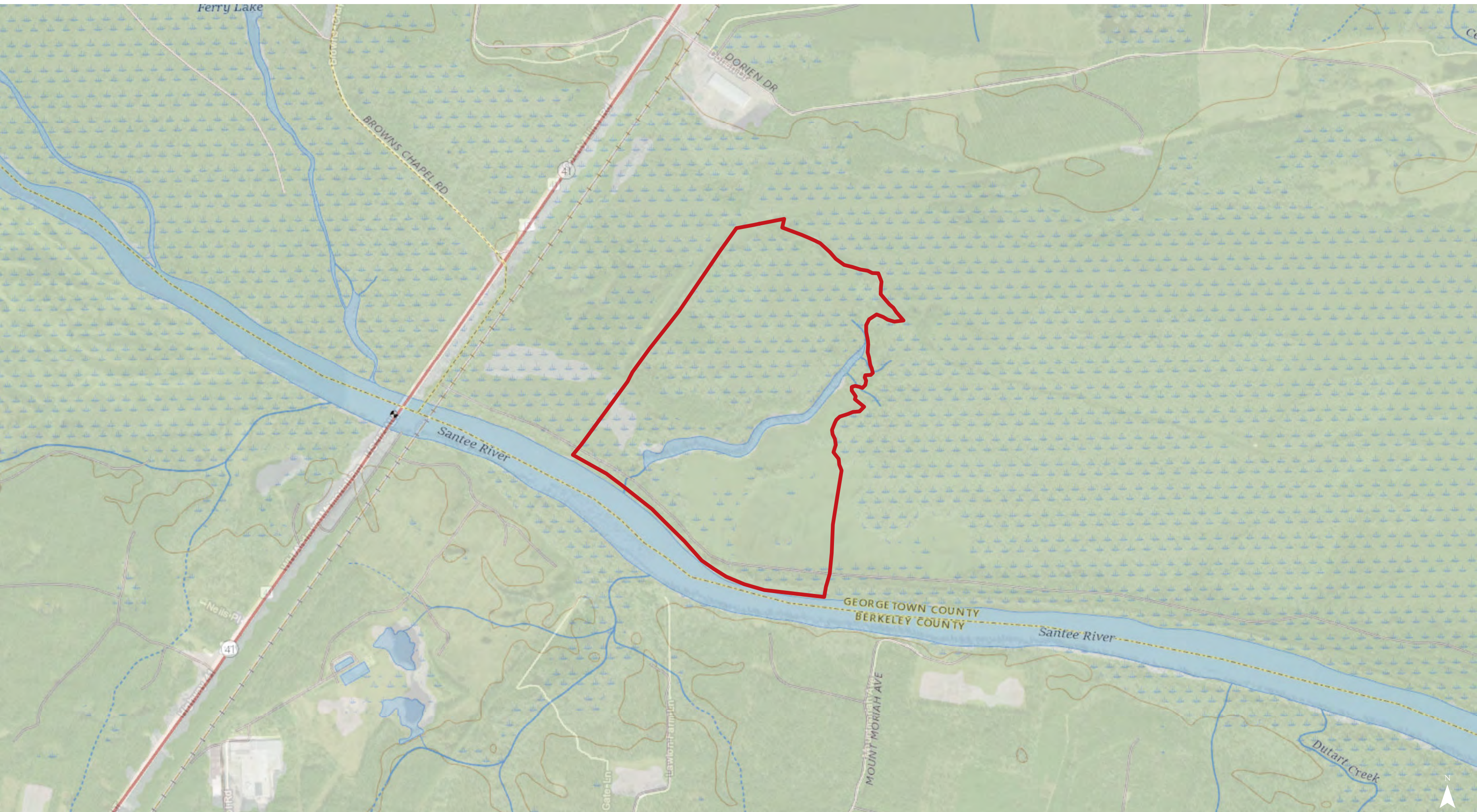
± 327.89
Acres

Area 2 - Timber Breakdown



Map Updated: Tuesday, November 17, 2020. This information submitted is not guaranteed. Although obtained from reliable sources, all information should be confirmed prior to use or reliance upon the information. This document may not be reproduced in whole or in part without the express written consent of NAI Columbia.

Topographical Map



Map Updated: Monday, November 9, 2020. This information submitted is not guaranteed. Although obtained from reliable sources, all information should be confirmed prior to use or reliance upon the information. This document may not be reproduced in whole or in part without the express written consent of NAI Columbia.



Map Updated: Monday, November 9, 2020. This information submitted is not guaranteed. Although obtained from reliable sources, all information should be confirmed prior to use or reliance upon the information. This document may not be reproduced in whole or in part without the express written consent of NAI Columbia.



Map Updated: Monday, November 9, 2020. This information submitted is not guaranteed. Although obtained from reliable sources, all information should be confirmed prior to use or reliance upon the information. This document may not be reproduced in whole or in part without the express written consent of NAI Columbia.



Map Updated: Monday, November 9, 2020. This information submitted is not guaranteed. Although obtained from reliable sources, all information should be confirmed prior to use or reliance upon the information. This document may not be reproduced in whole or in part without the express written consent of NAI Columbia.

Map Unit Description (Brief, Generated)

Georgetown County, South Carolina

[Minor map unit components are excluded from this report]

Map unit: 36B - Lakeland fine sand, 0 to 6 percent slopes

Component: Lakeland (100%)

The Lakeland component makes up 100 percent of the map unit. Slopes are 0 to 6 percent. This component is on coastal plains, flats. The parent material consists of sandy marine deposits. Depth to a root restrictive layer is greater than 60 inches. The natural drainage class is excessively drained. Water movement in the most restrictive layer is high. Available water to a depth of 60 inches is low. Shrink-swell potential is low. This soil is not flooded. It is not ponded. There is no zone of water saturation within a depth of 72 inches. Organic matter content in the surface horizon is about 1 percent. Nonirrigated land capability classification is 4s. This soil does not meet hydric criteria.

Map unit: 56 - Chastain silty clay loam

Component: Chastain (100%)

The Chastain component makes up 100 percent of the map unit. Slopes are 0 to 1 percent. This component is on coastal plains, flood plains. The parent material consists of clayey alluvium. Depth to a root restrictive layer is greater than 60 inches. The natural drainage class is poorly drained. Water movement in the most restrictive layer is moderately low. Available water to a depth of 60 inches is moderate. Shrink-swell potential is moderate. This soil is frequently flooded. It is not ponded. A seasonal zone of water saturation is at 0 inches during January, February, March, April, November, December. Organic matter content in the surface horizon is about 4 percent. Nonirrigated land capability classification is 6w. This soil meets hydric criteria.

Map unit: W - Water

Component: Water (100%)

Generated brief soil descriptions are created for major soil components. The Water is a miscellaneous area.