

# LAND FOR SALE

## LISTING #15275

**PRICE:** \$140,000

**DESCRIPTION:** Beautiful, wooded 10 acres m/l lot loaded with mature hardwood timber ready for your dream home. This property is just a 30 minute drive from West Des Moines and will provide all of the quiet serenity you have been looking for. Take your evening stroll through the mature oak and hickory forest or hunt from your deck, it is your choice. The property is 3.5 miles off of Interstate 35 and 2 miles from a paved road. If there was ever a chance to get away and enjoy a quiet space here it is. Electricity is at the road and rural water is close by..

**DIRECTIONS:** Starting In West Des Moines, Iowa head South on Interstate 35 for roughly 25 miles. Take Exit 47 and head East on County Road G64. Continue straight onto 20th Ave after the corner. Travel 2 miles then turn left onto Tyler Street. The property will be on your left side. .

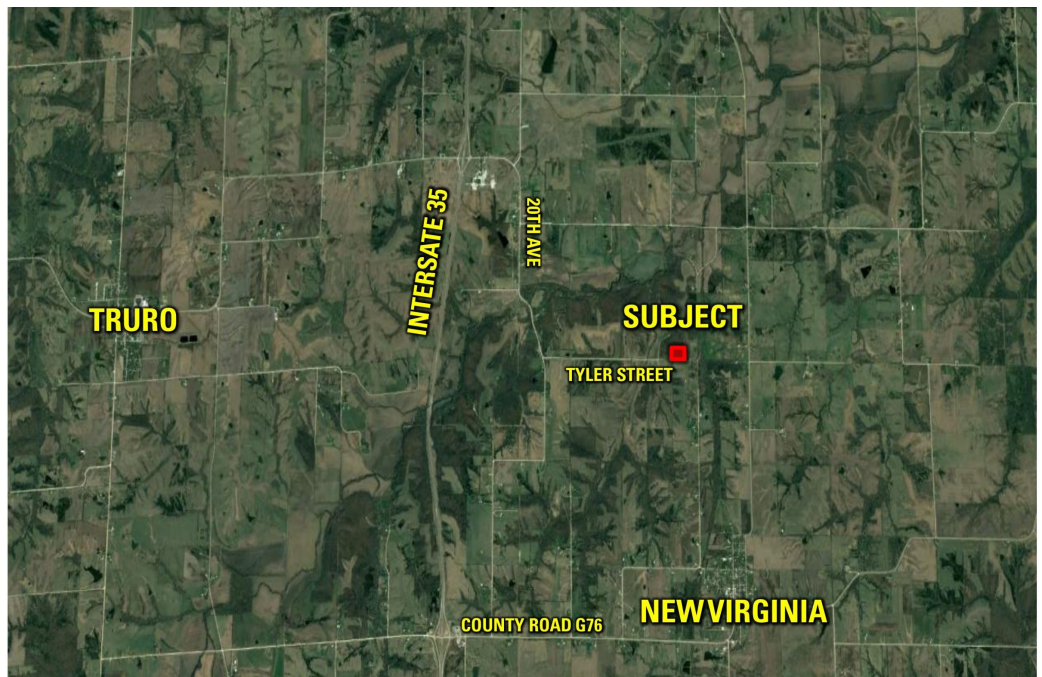
**DARAN BECKER**

C: 515.979.3498

O: 515.222.1347

Daran@PeoplesCompany.com

**10 ACRES M/L**  
**WARREN COUNTY, IOWA**



**PeoplesCompany.com**  
**855.800.LAND**

12119 Stratford Dr, Ste B  
Clive, Iowa 50325