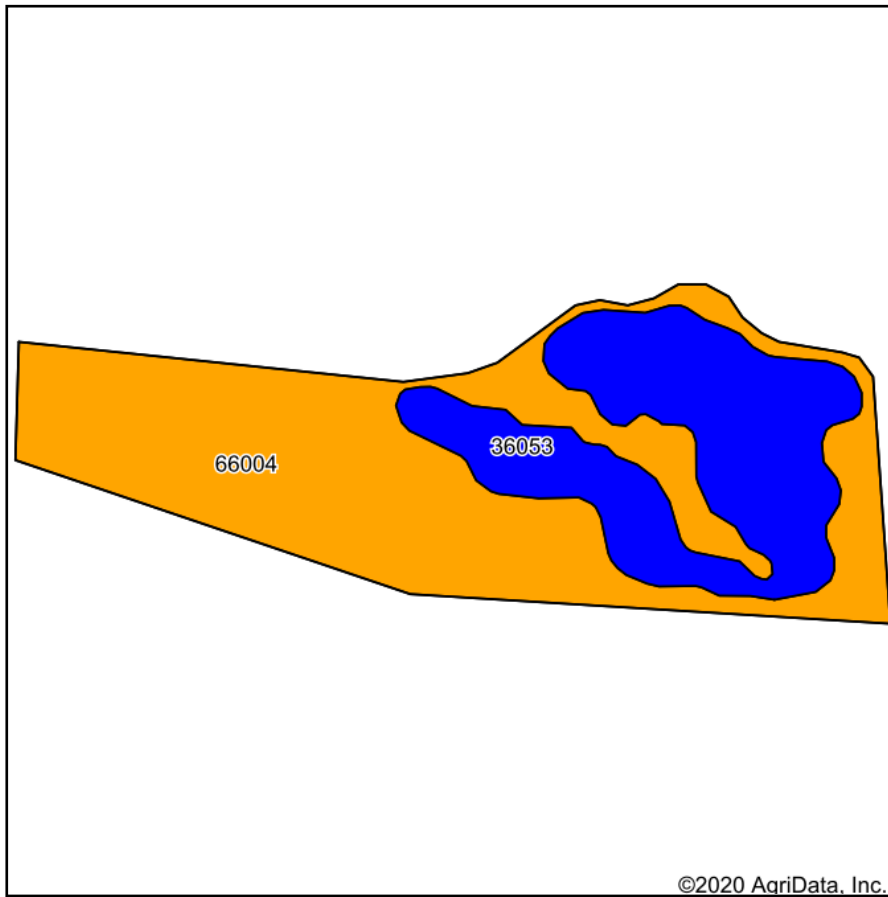
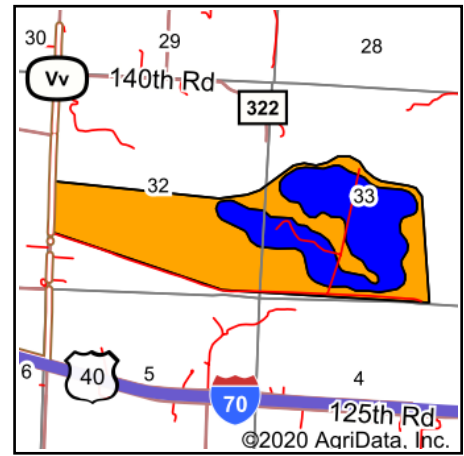


Soils Map



Soils data provided by USDA and NRCS.



State: **Missouri**
 County: **Saline**
 Location: **32-49N-23W**
 Township: **Salt Pond**
 Acres: **507.41**
 Date: **9/17/2020**

United Country
 Property
 Solutions, LLC

Maps Provided By:
surety
 CUSTOMIZED ONLINE MAPPING
 © AgriData, Inc. 2020 www.AgriDataInc.com



Area Symbol: MO195. Soil Area Version: 22

Code	Soil Description	Acres	Percent of field	Non-Irr Class Legend	Non-Irr Class *c	Common bermudagrass	Corn	Grain sorghum	Orchardgrass red clover	Soybeans	Tall fescue	Warm season grasses	Winter wheat	*n NCCPI Overall	*n NCCPI Corn	*n NCCPI Soybeans
66004	Dockery silt loam, 0 to 2 percent slopes, frequently flooded	329.76	65.0%		IIIw	8	5	4	9	1	8	10	2	60	59	
36053	Zook silty clay, 0 to 2 percent slopes, frequently flooded	177.65	35.0%		IIw									59	54	
Weighted Average						5.2	3.2	2.6	5.8	0.6	5.2	6.5	1.3	*n 59.6	*n 57.2	*n

*n: The aggregation method is "Weighted Average using all components"

*c: Using Capabilities Class Dominant Condition Aggregation Method

Soils data provided by USDA and NRCS.