

The South Half & Northeast Quarter 15-26-31
Finney County, Kansas



HUTCHESON

Real Estate & Auction Co.

(620) 355-7991

hutchreal.com

The South Half & Northeast Quarter 15-26-31

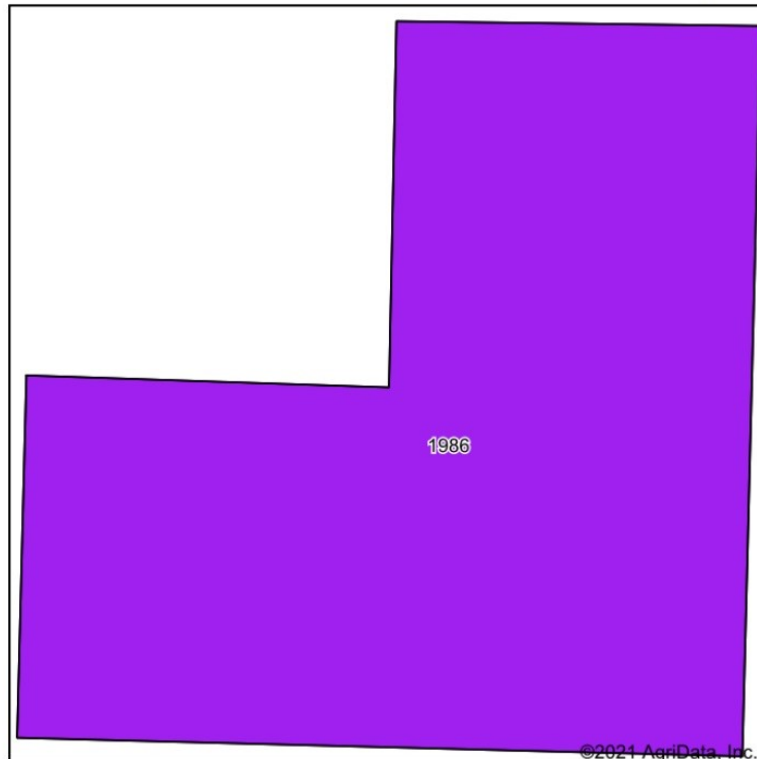
Finney County, Kansas



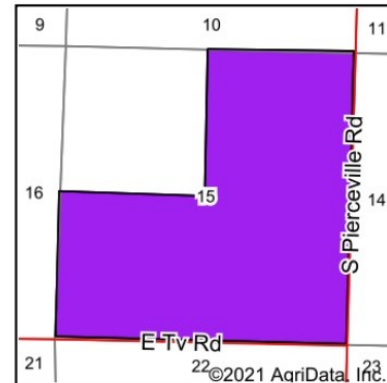
The South Half & Northeast Quarter 15-26-31

Finney County, Kansas

Soils Map



Soils data provided by USDA and NRCS.



State: **Kansas**
 County: **Finney**
 Location: **15-26S-31W**
 Township: **Pierceville**
 Acres: **485.69**
 Date: **1/5/2021**

HUTCHESON
 Real Estate & Auction Co.
 (620) 355-7991
 hutchreal.com



Area Symbol: KS055, Soil Area Version: 18

| Code | Soil Description | Acres | Percent of field | Non-Irr Class Legend | Non-Irr Class *c | Irr Class *c | *n NCCPI Soybeans |
|------------------|--|--------|------------------|----------------------|------------------|--------------|-------------------|
| 1986 | Valent-Vona loamy fine sands, 3 to 15 percent slopes | 485.69 | 100.0% | | Vle | Vle | 20 |
| Weighted Average | | | | | | | *n 20 |

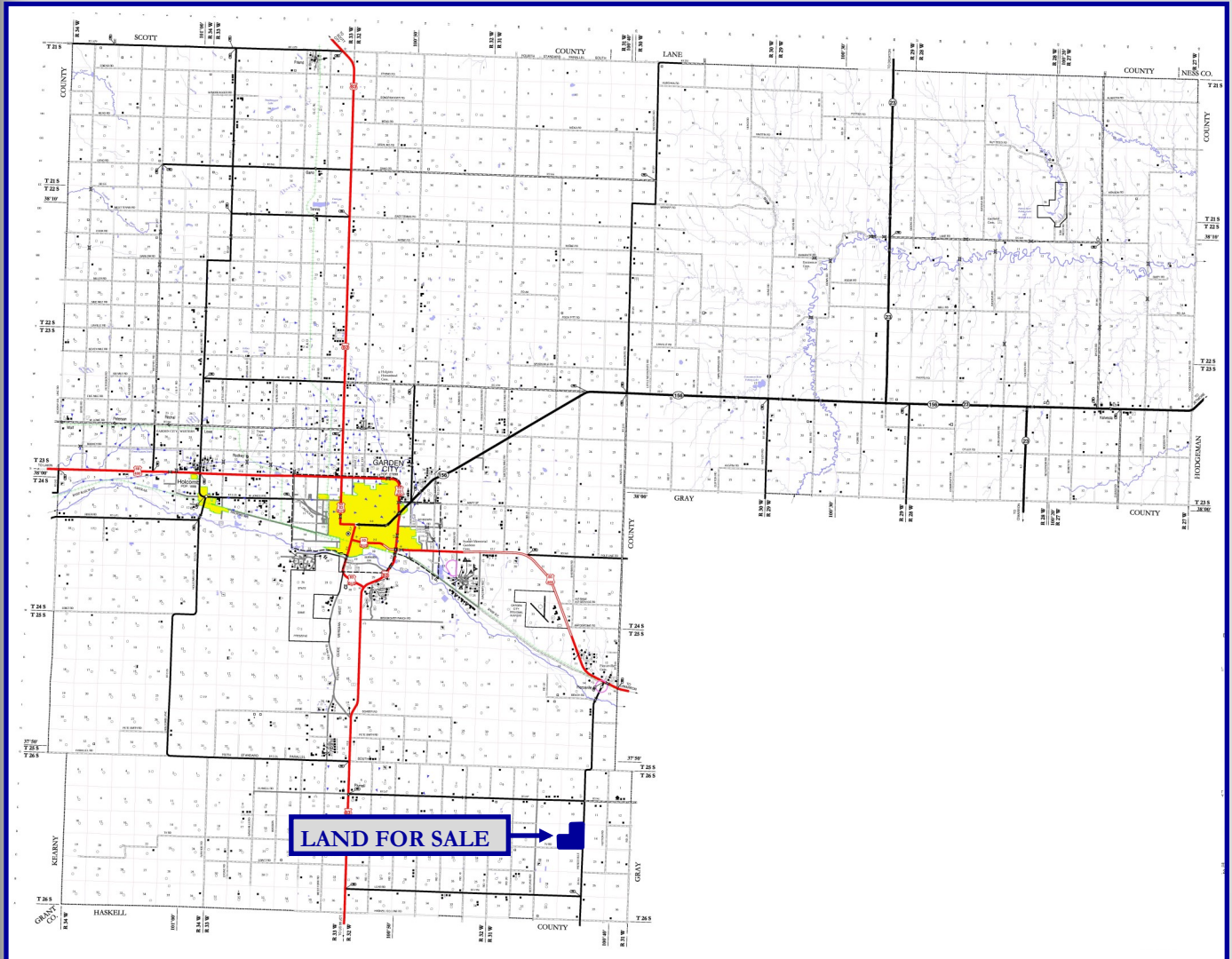
*n: The aggregation method is "Weighted Average using all components"

*c: Using Capabilities Class Dominant Condition Aggregation Method



The South Half & Northeast Quarter 15-26-31

Finney County, Kansas



The South Half & Northeast Quarter 15-26-31

Finney County, Kansas

Legal Description

The South Half (S/2) and the Northeast Quarter (NE/4) of Section Fifteen (15), Township Twenty-six (26) South, Range Thirty-one (31) West of the Sixth P.M., Finney County, Kansas.

Possession

Buyer will get immediate possession of the land.

Water Rights

This tract is governed by Water Right 20185-D1. This Water Right allows 138 AF to pumped per calendar year. The irrigation well has not been pumped for several years.

There are also two domestic wells located on this property.

Irrigation Equipment

All irrigation equipment currently on this property shall transfer with the land.

Minerals

This tract is selling with the surface and water rights only.

Real Estate Taxes

2020 Real Estate Taxes \$3,028.06

Asking Price

\$384,000 or \$800 Per Acre

