



905 S. Fillmore St., Ste 102  
Amarillo, TX 79101  
Phone: 806-355-9856  
Fax: 806-358-3481

## Ellis Co. OK Ranch







**Price:** \$640,000.00

**Total Acres:** 800

**Irrigated Acres:**

**Dryland Acres:**

**Grass Acres:** 800

**CRP Acres:**

**CRP Payments:**

**CRP Expiration:**

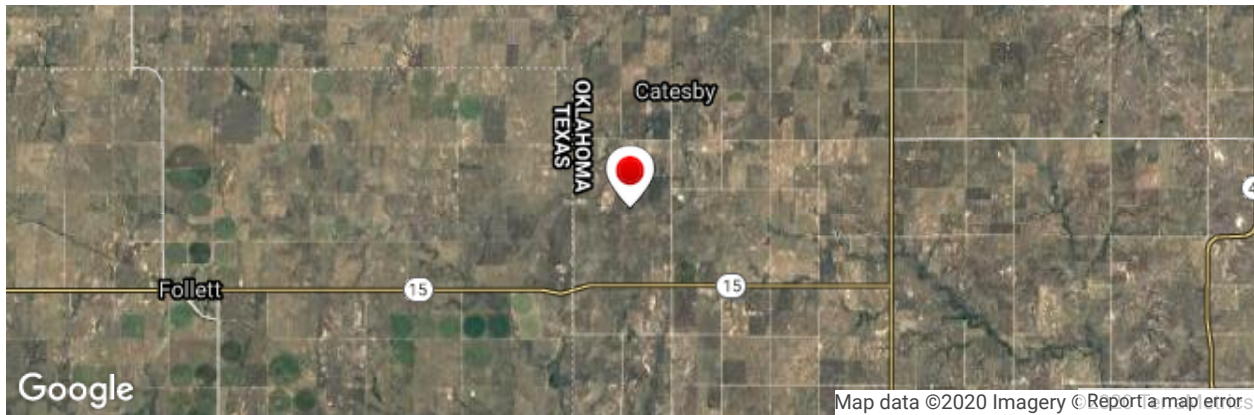
**Taxes:** 500.00

## PRICE REDUCED

Great grassland with excellent distribution of water supply for cattle grazing management. Located just 9 miles East of Follett, Texas with ease of access from all weather county roadways on the East and West property lines, making this ranch a great opportunity. All water supply wells are equipped with solar pumps and panels for efficient

**FSA Payments:**  
**Mineral Rights:** none owned

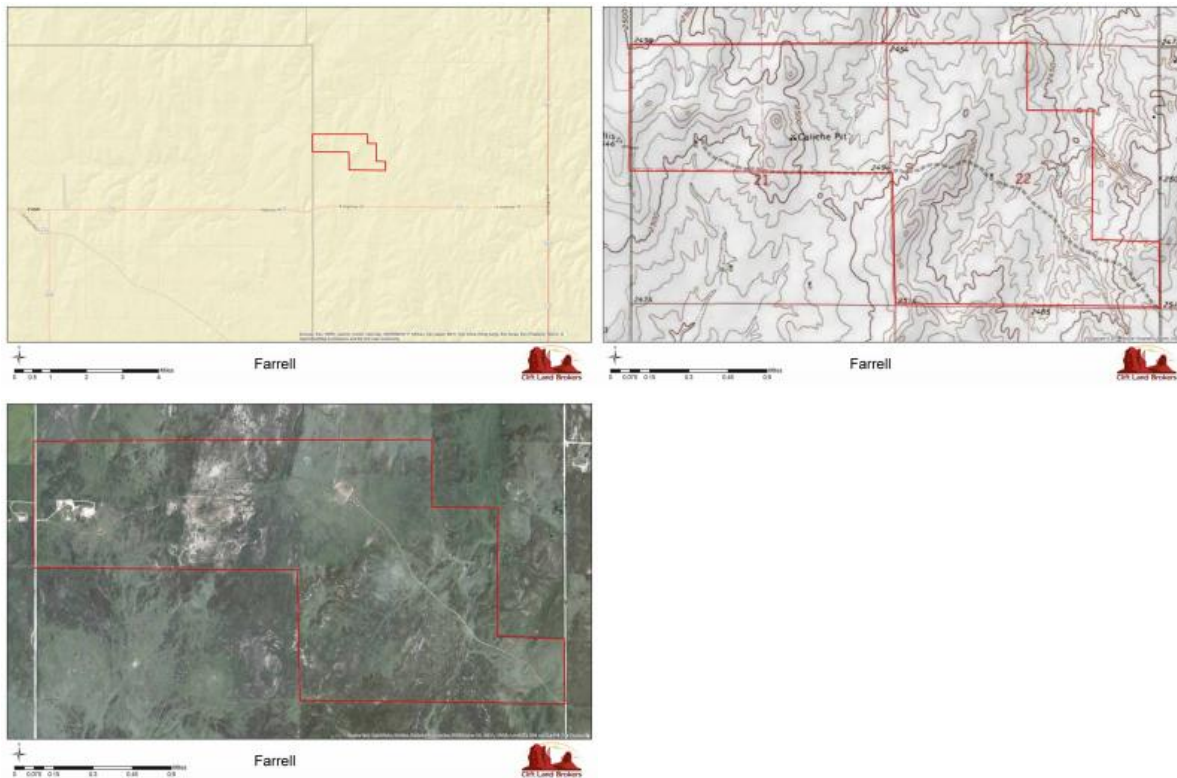
operations costs. An overhead cattle cube feed bin is centrally located as the well, and will transfer with the property.



From Follett Texas East on Hwy 15 9.8 miles to N1710 Rd. North on N1710 Rd 1.0 mile to the Southeast corner of the Subject Property.

Latitude: 36.46067

Longitude: -99.98271



## Listing Agent



**George Clift ALC**  
(<https://www.cliftlandbrokers.com/agent/george-clift-alc-2/>)

Email  
(mailto:George@CliftLandBrokers.com)  
806-674-  
8979

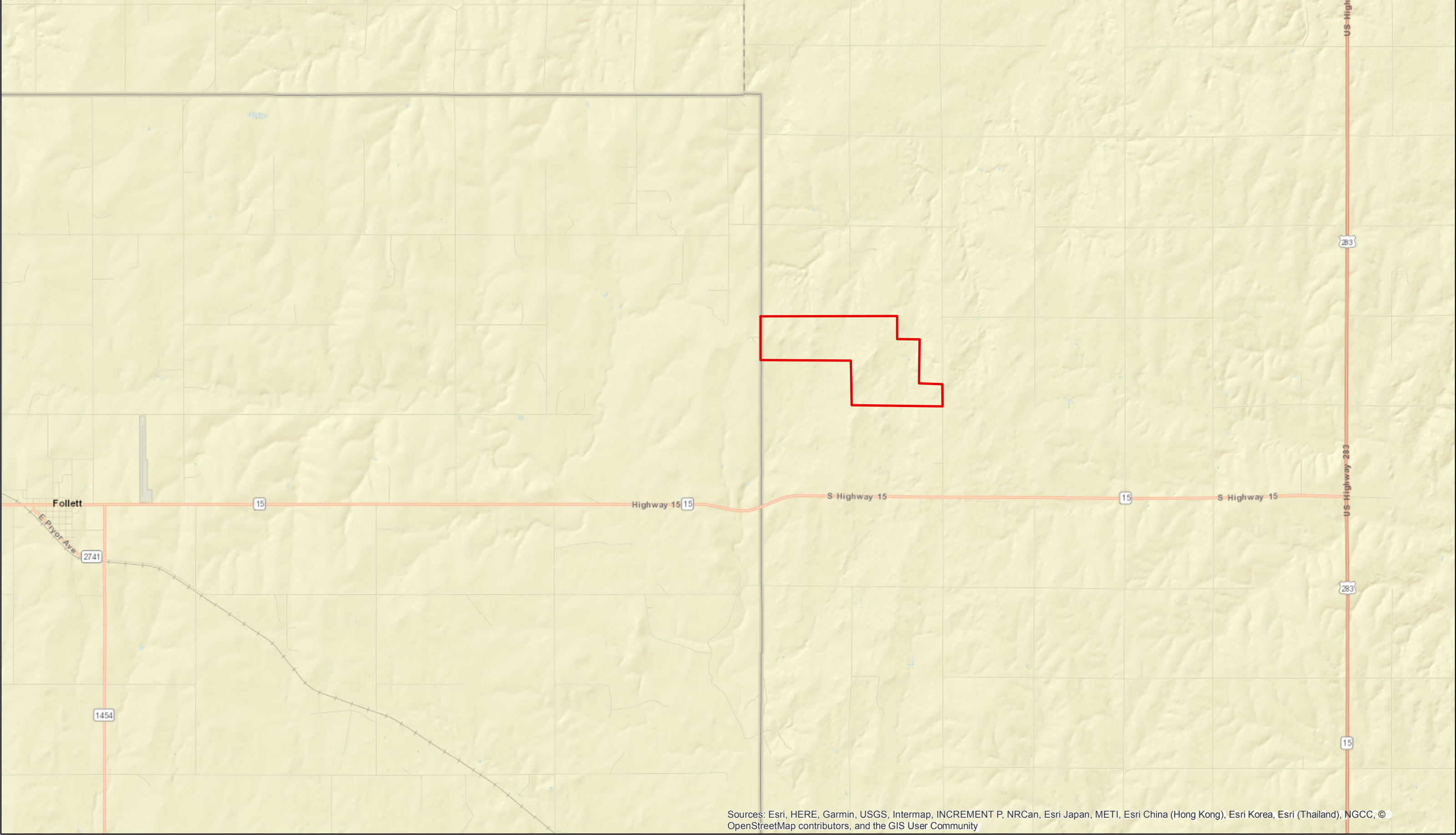
---

URL to article: <https://www.cliftlandbrokers.com/property/ellis-co-ok-ranch/>

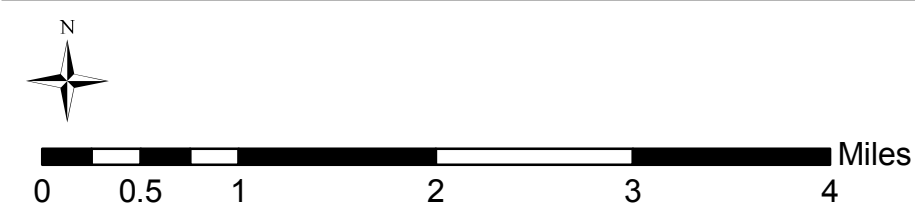
Click [here](#) to prii

Copyright © 2013 Clift Land Brokers. All rights reserved.





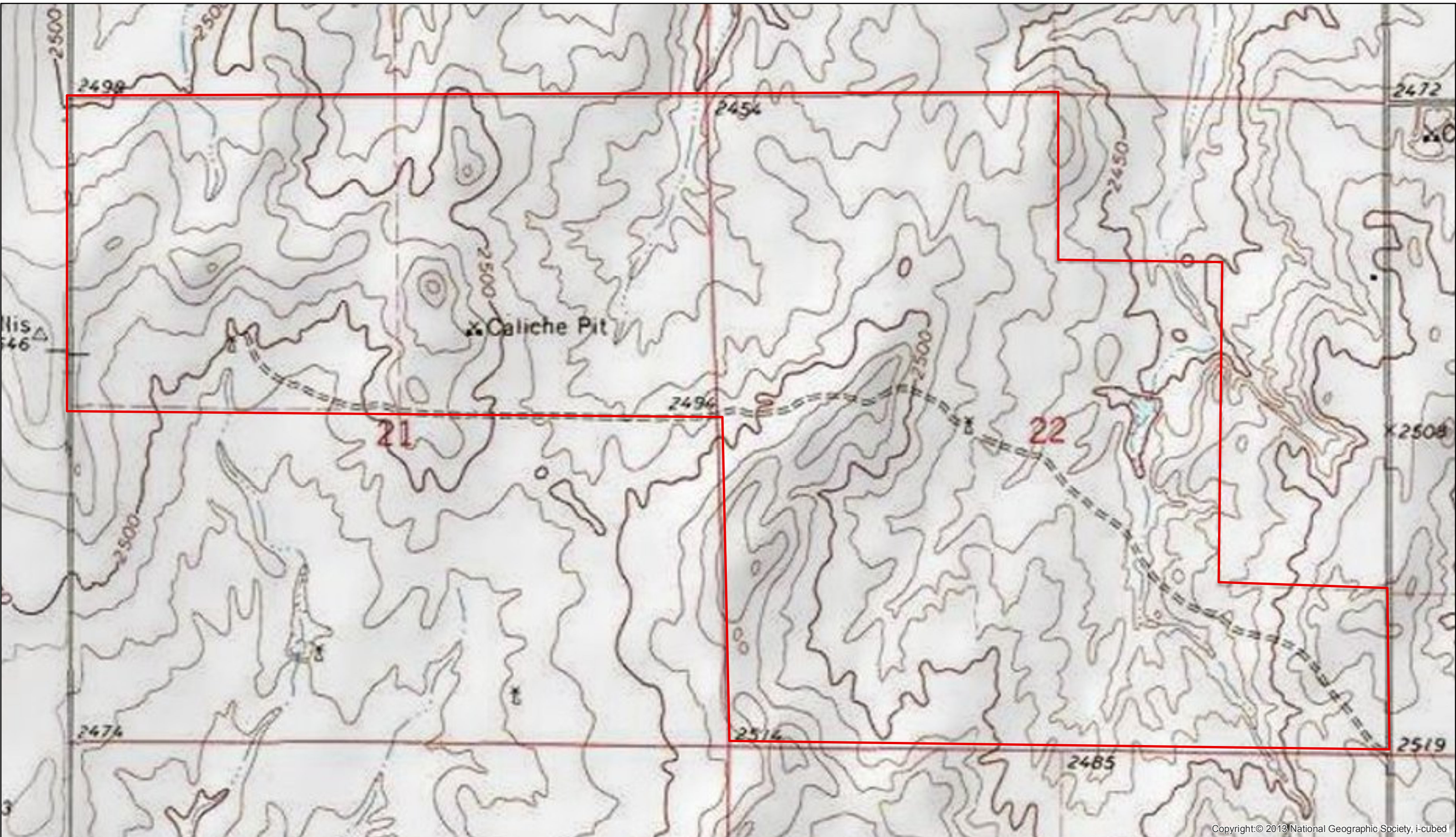
Sources: Esri, HERE, Garmin, USGS, Intermap, INCREMENT P, NRCan, Esri Japan, METI, Esri China (Hong Kong), Esri Korea, Esri (Thailand), NGCC, © OpenStreetMap contributors, and the GIS User Community



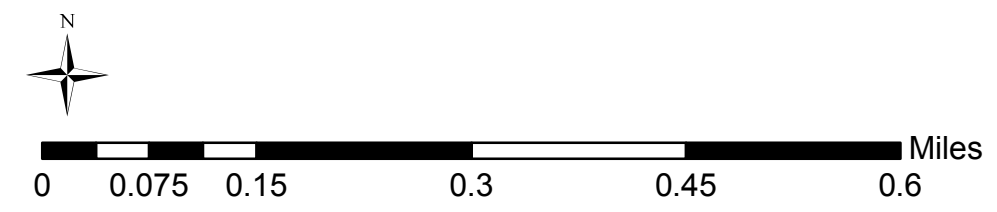
# Farrell







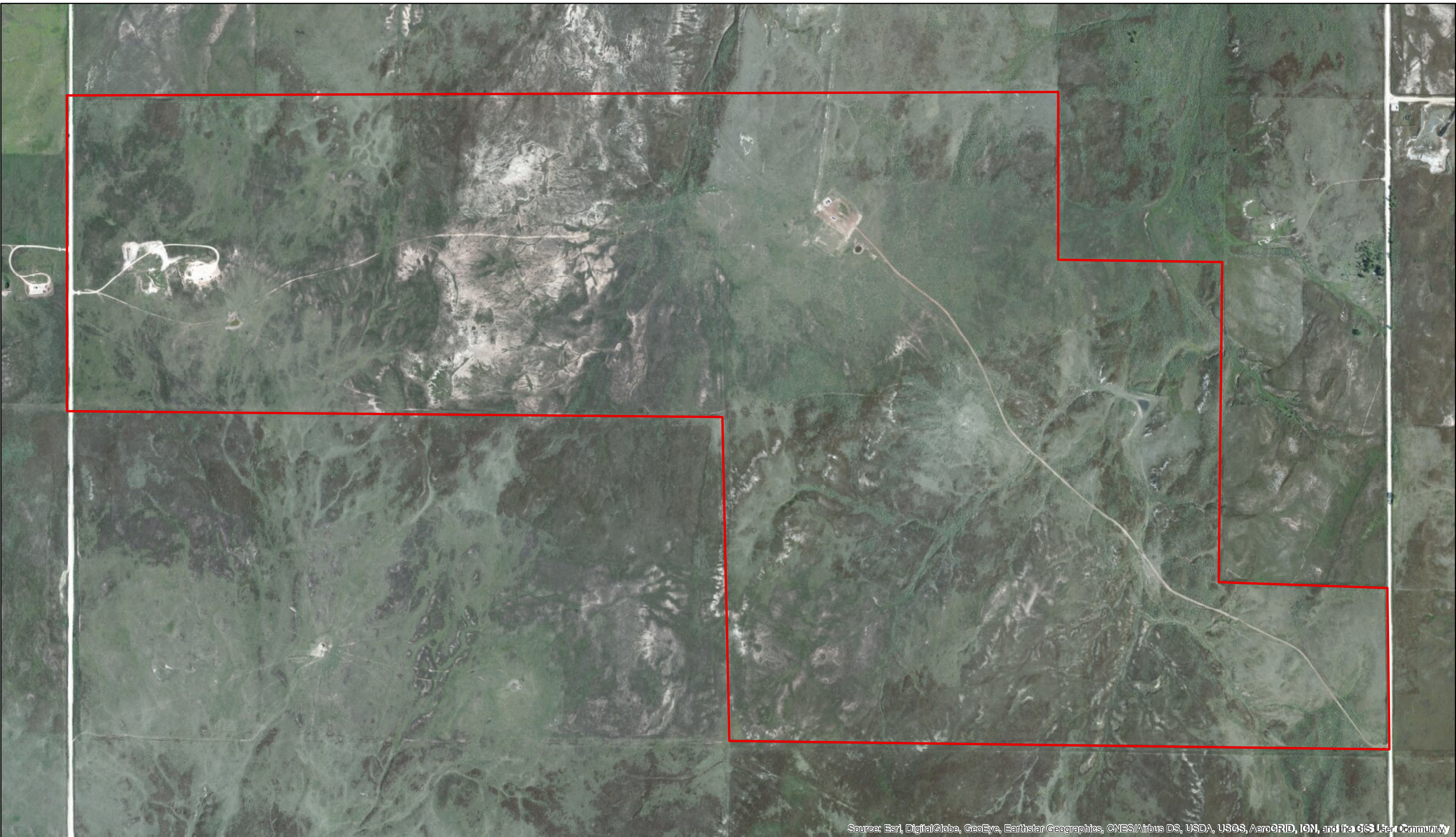
Copyright © 2013 National Geographic Society, i-cubed



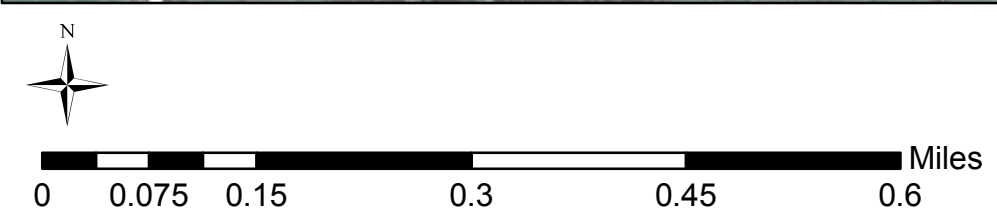
Farrell







Source: Esri, DigitalGlobe, GeoEye, Earthstar Geographics, CNES/Airbus DS, USDA, USGS, AeroGRID, IGN, and the GIS User Community



Farrell

