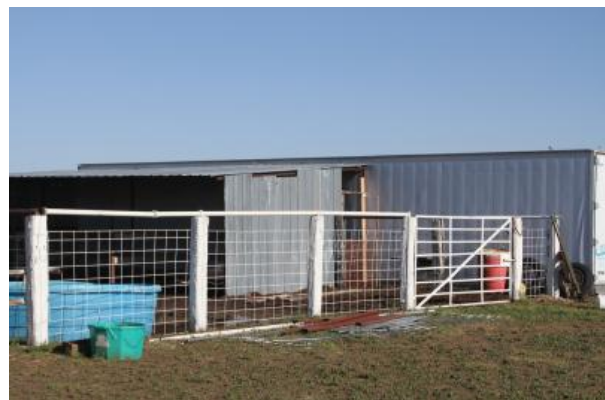




905 S. Fillmore St., Ste 102  
Amarillo, TX 79101  
Phone: 806-355-9856  
Fax: 806-358-3481

## Beaver Co. Oklahoma Homestead





**Price:** \$240,000.00

**Total Acres:** 160

**Irrigated Acres:**

**Dryland Acres:**

**Grass Acres:** 160

**CRP Acres:**

**CRP Payments:**

**CRP Expiration:**

**Taxes:** 206.64

**FSA Payments:**

**Mineral Rights:** none convey

This is a nice quarter section with residence located just 2.5 miles from Balko, Oklahoma School on paved and all weather surface roadways. The property has a updated farm home and small pens and livestock shelter. It's a great location for a family to enjoy rural living as well be close to school activities. For additional pictures click [here](https://www.cliftlandbrokers.com/wp-content/uploads/2020/05/additional-pictures.pdf).

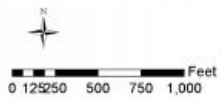
(<https://www.cliftlandbrokers.com/wp-content/uploads/2020/05/additional-pictures.pdf>)



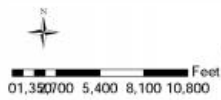
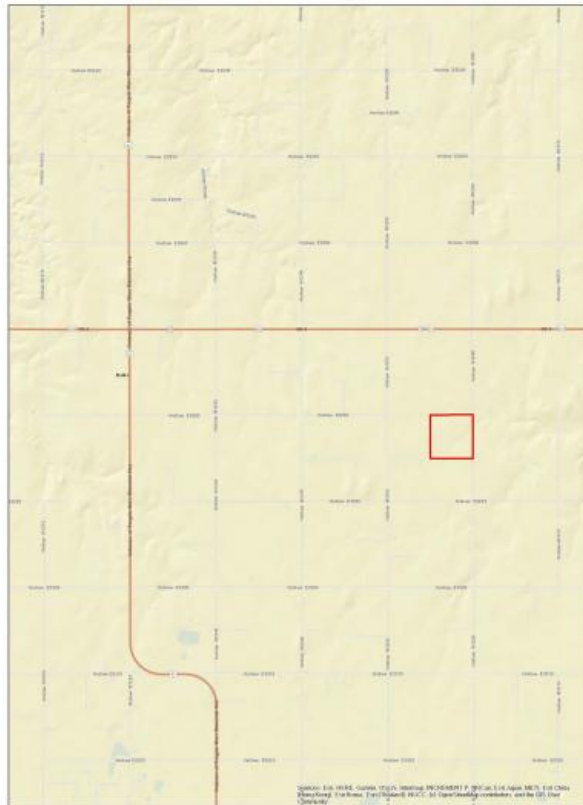
From Perryton, Texas, US Hwy 83 and Texas 15, North on US 83 16 miles to OK Hwy 412, East on 412 4 miles to County Road 26, South on 26 1 mile to the Northeast corner of the property.

Latitude: 36.5982

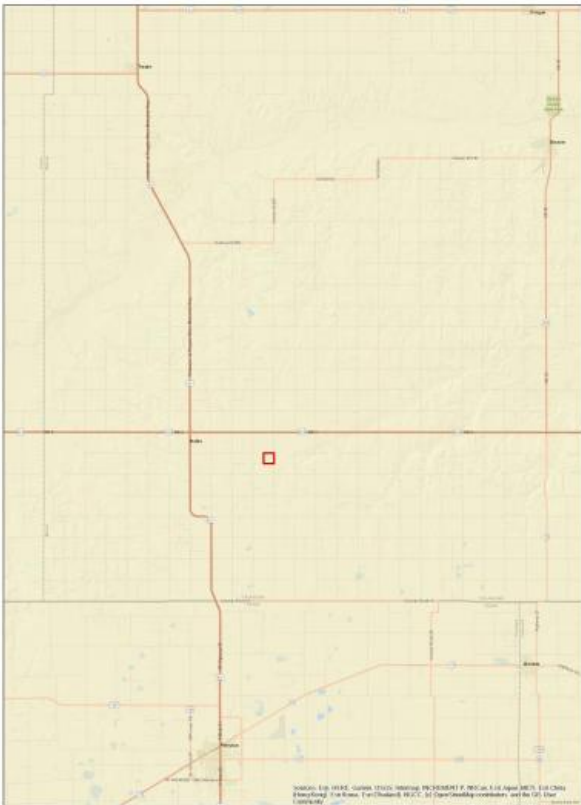
Longitude: -100.76101



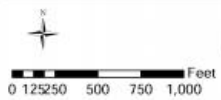
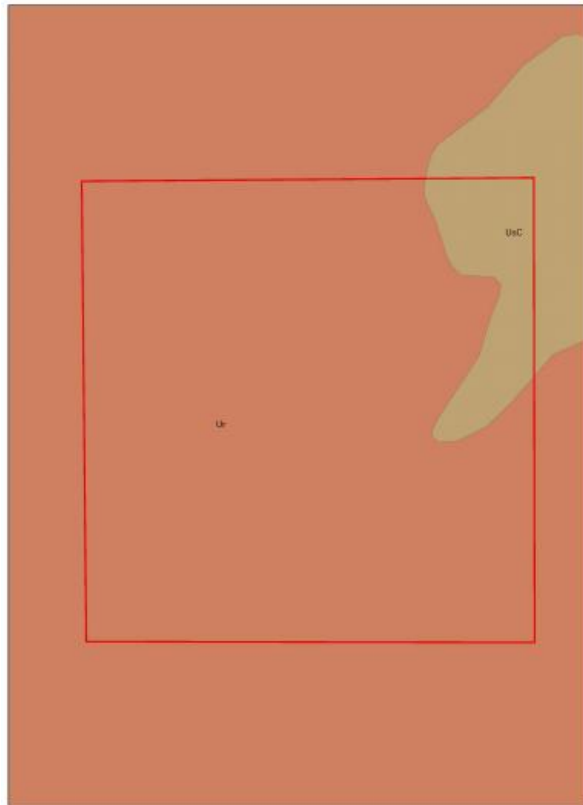
Beaver 21



Beaver 21

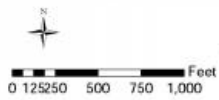


Beaver 21



Beaver 21





Beaver 21



## Listing Agent



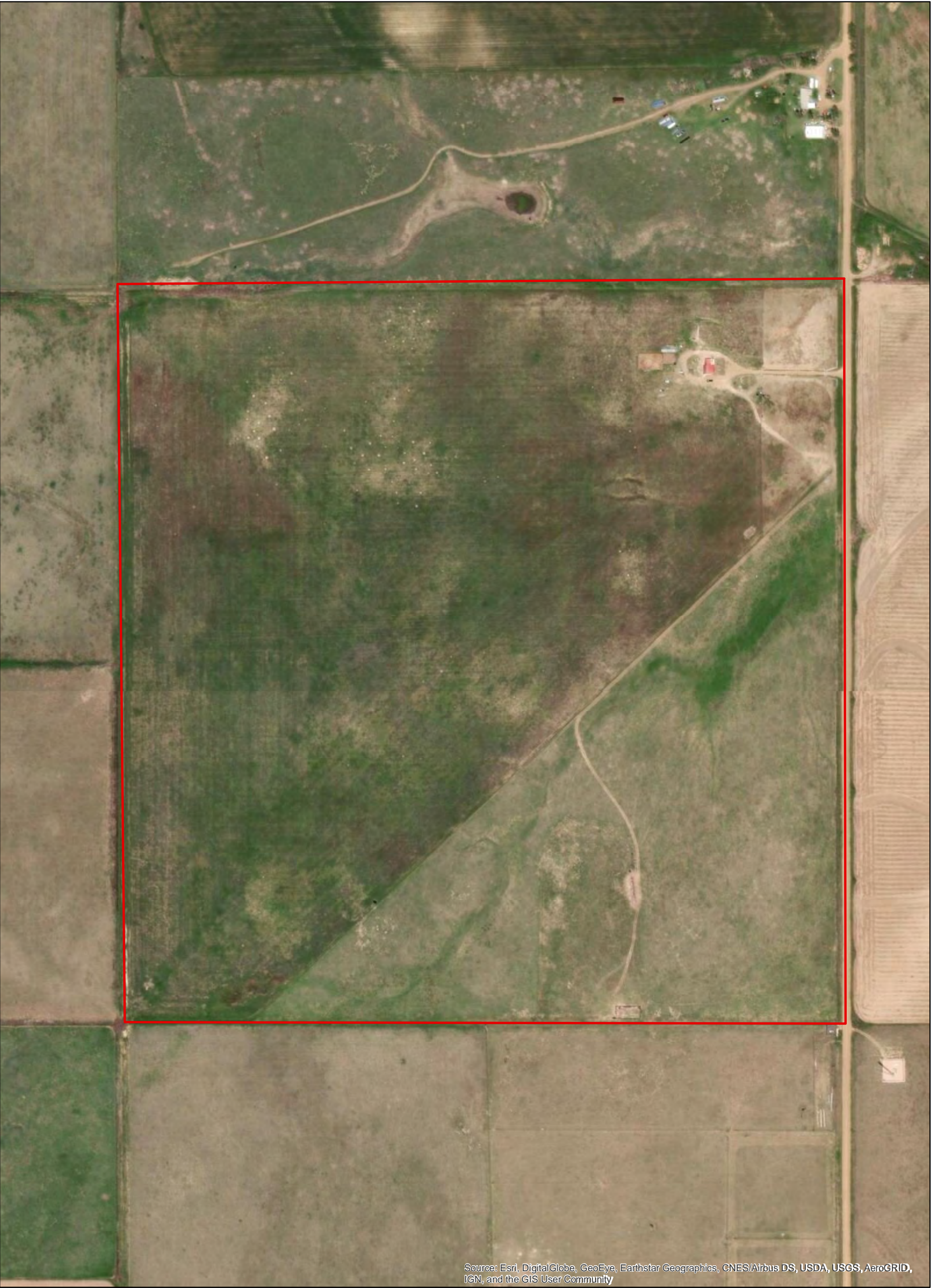
**George Clift ALC**  
(<https://www.cliftlandbrokers.com/agent/george-clift-alc-2/>)

Email  
(mailto:George@CliftLandBrokers.com)  
806-674-  
8979

URL to article: <https://www.cliftlandbrokers.com/property/beaver-co-oklahoma-homestead/>

Click [here](#) to prii

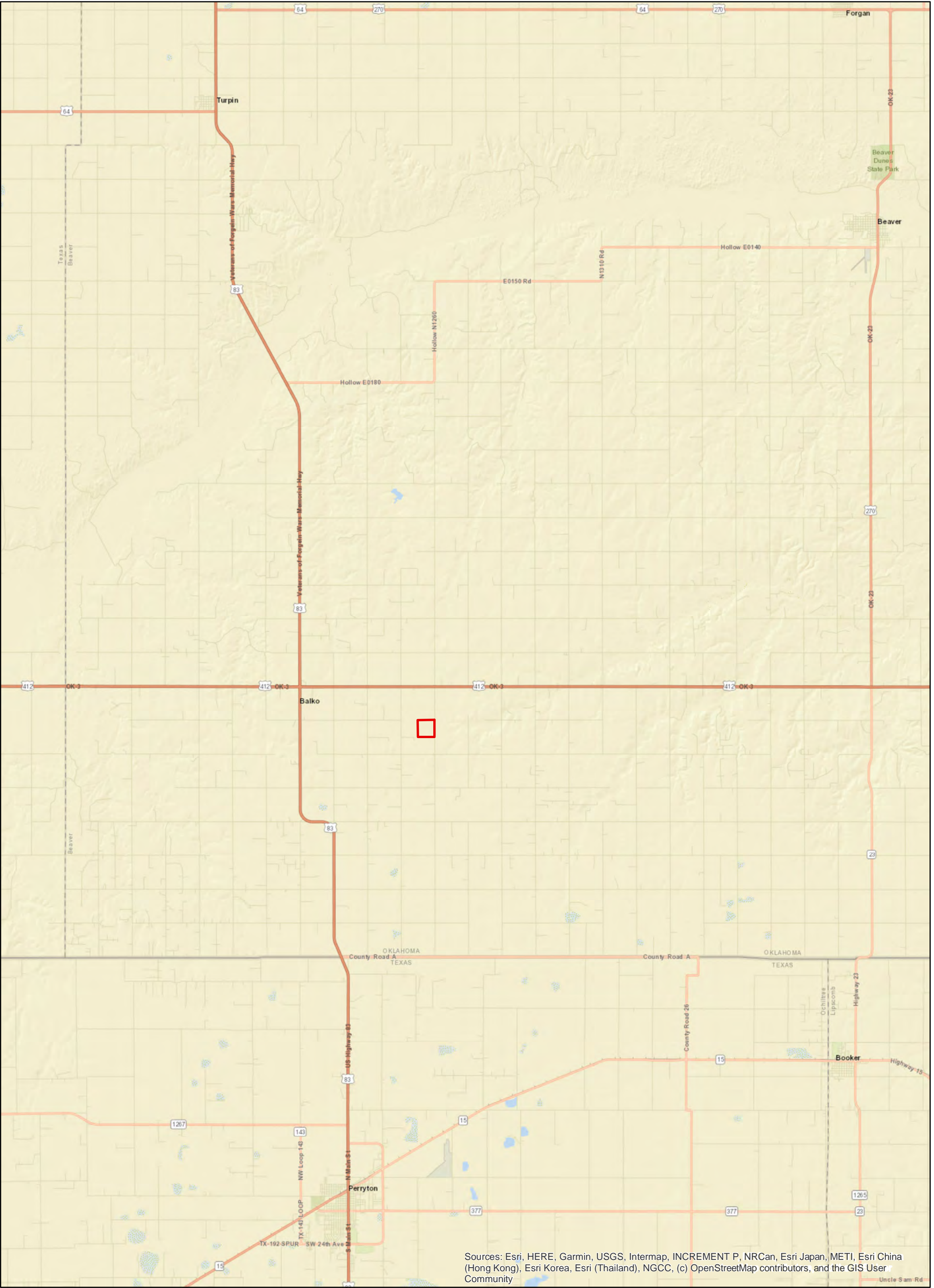
Copyright © 2013 Clift Land Brokers. All rights reserved.



# Beaver 21

0 125 250 500 750 1,000 Feet





Sources: Esri, HERE, Garmin, USGS, Intermap, INCREMENT P, NRCan, Esri Japan, METI, Esri China (Hong Kong), Esri Korea, Esri (Thailand), NGCC, (c) OpenStreetMap contributors, and the GIS User Community

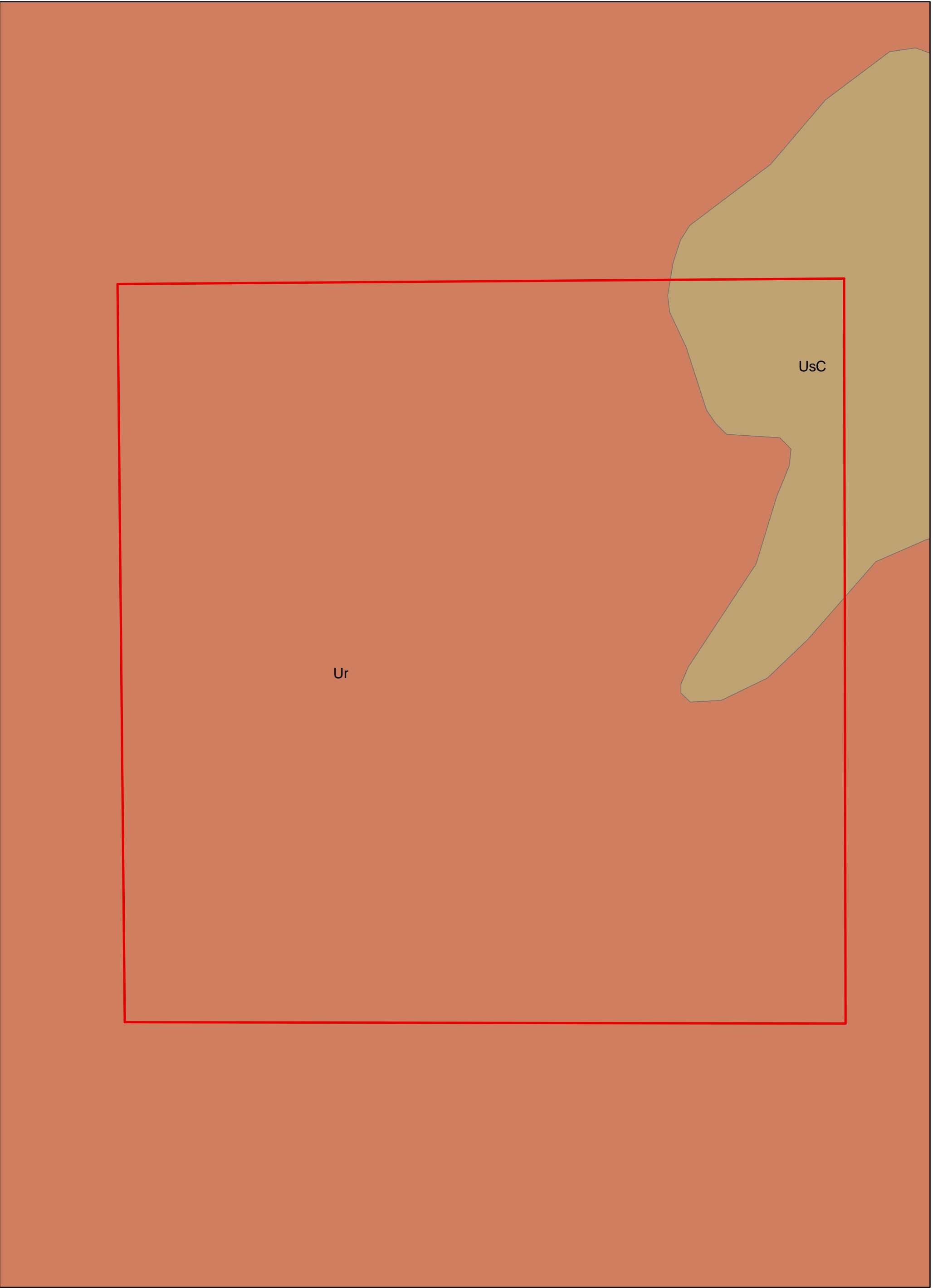


# Beaver 21

05,500 11,000 16,500 22,000 27,500 33,000 38,500 44,000 Feet



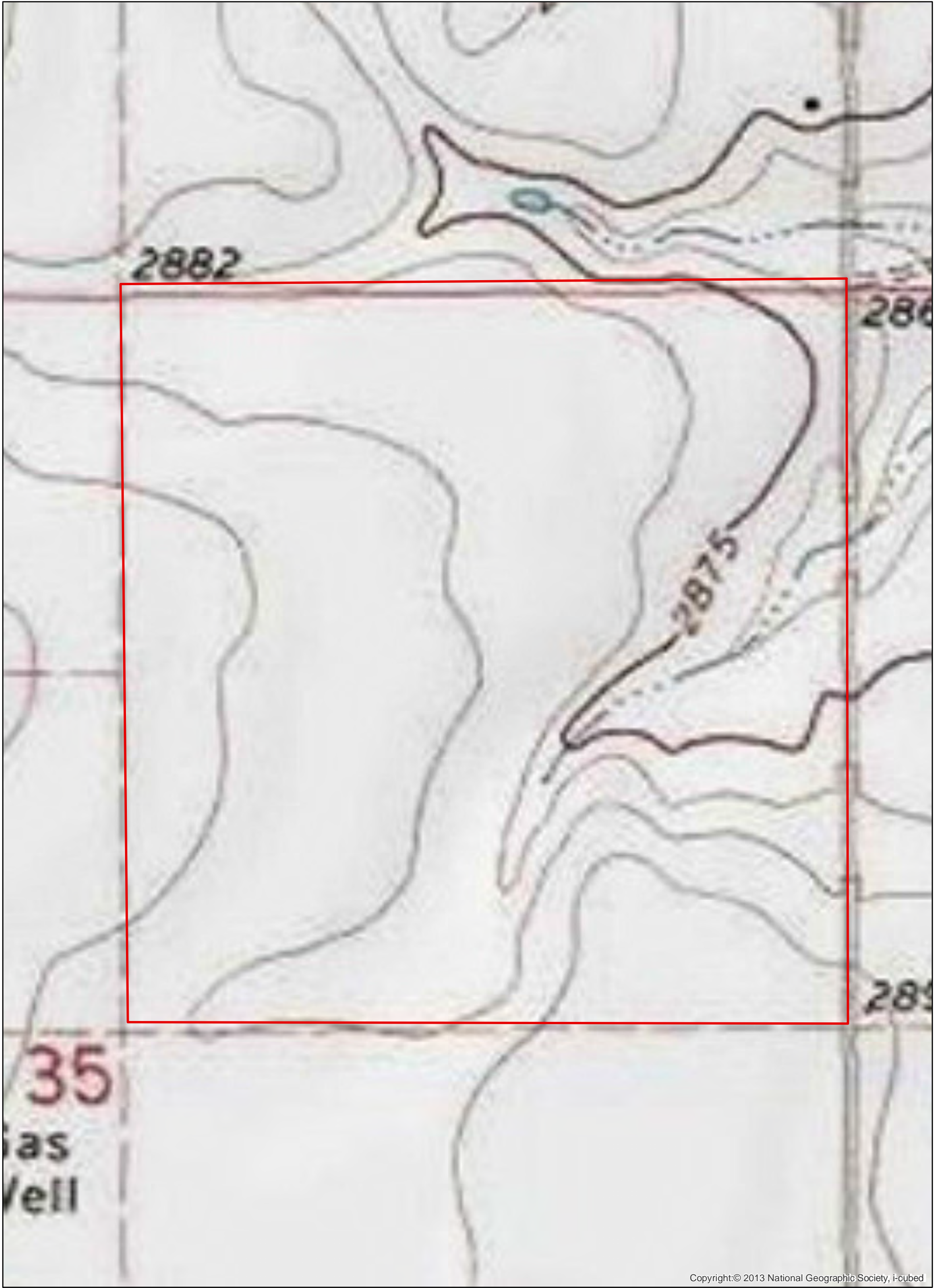




0 125 250 500 750 1,000 Feet

# Beaver 21





Copyright:© 2013 National Geographic Society, i-cubed



# Beaver 21

