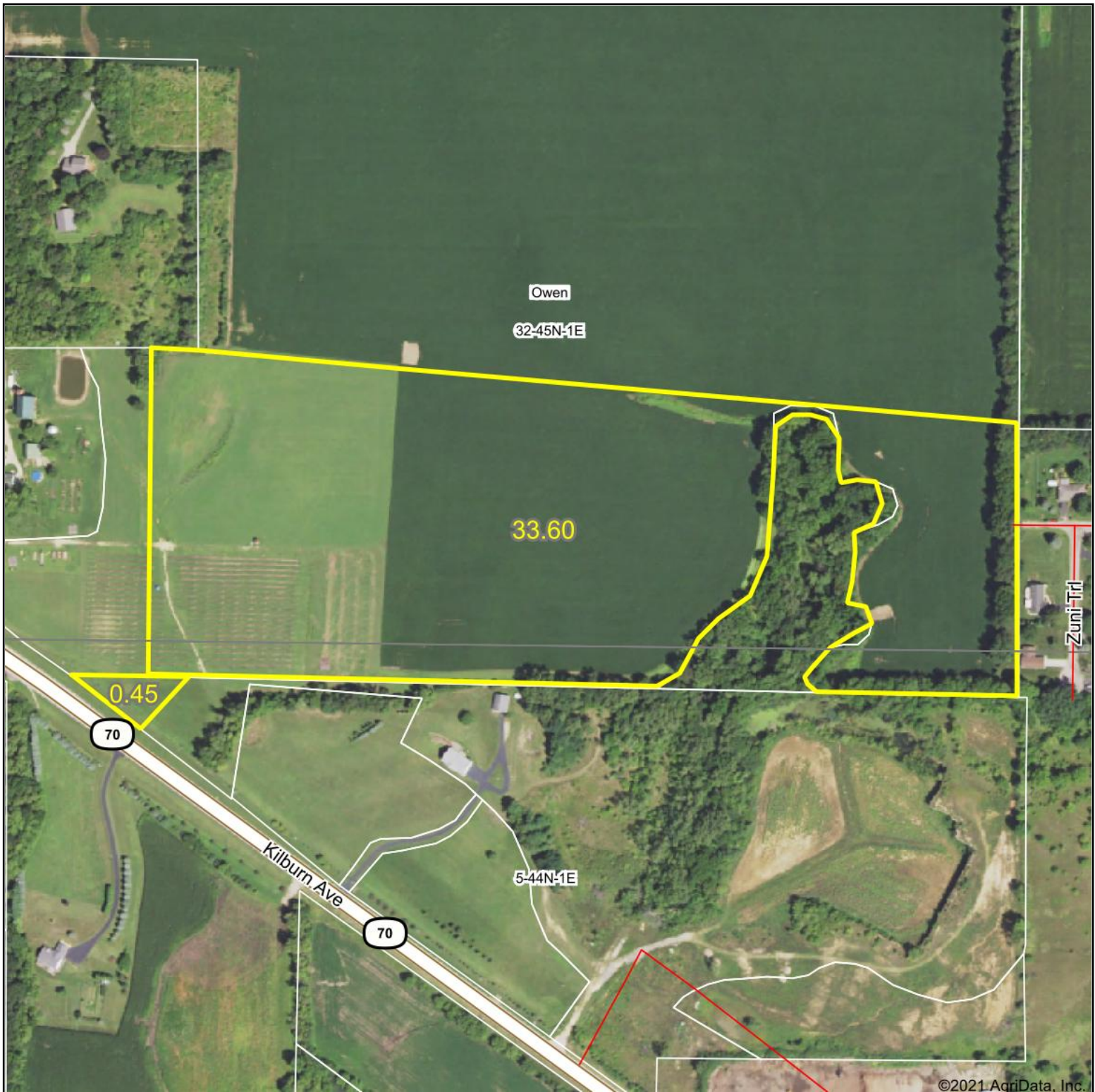


Aerial Map - Tillable Acres



Map Center: 42° 19' 30.82, -89° 9' 0.81

0ft 390ft 781ft

32-45N-1E

**Winnebago County
Illinois**



2/24/2021

Maps Provided By:



© AgriData, Inc. 2021

www.AgriDataInc.com

Field borders provided by Farm Service Agency as of 5/21/2008.