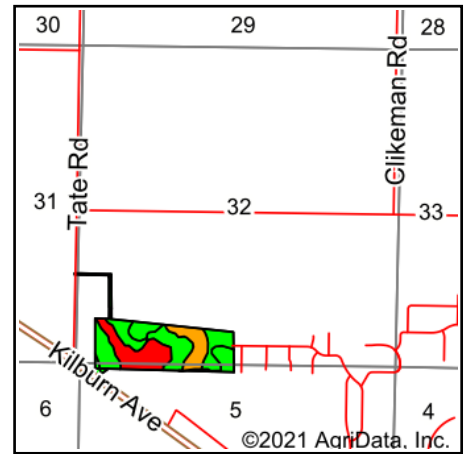
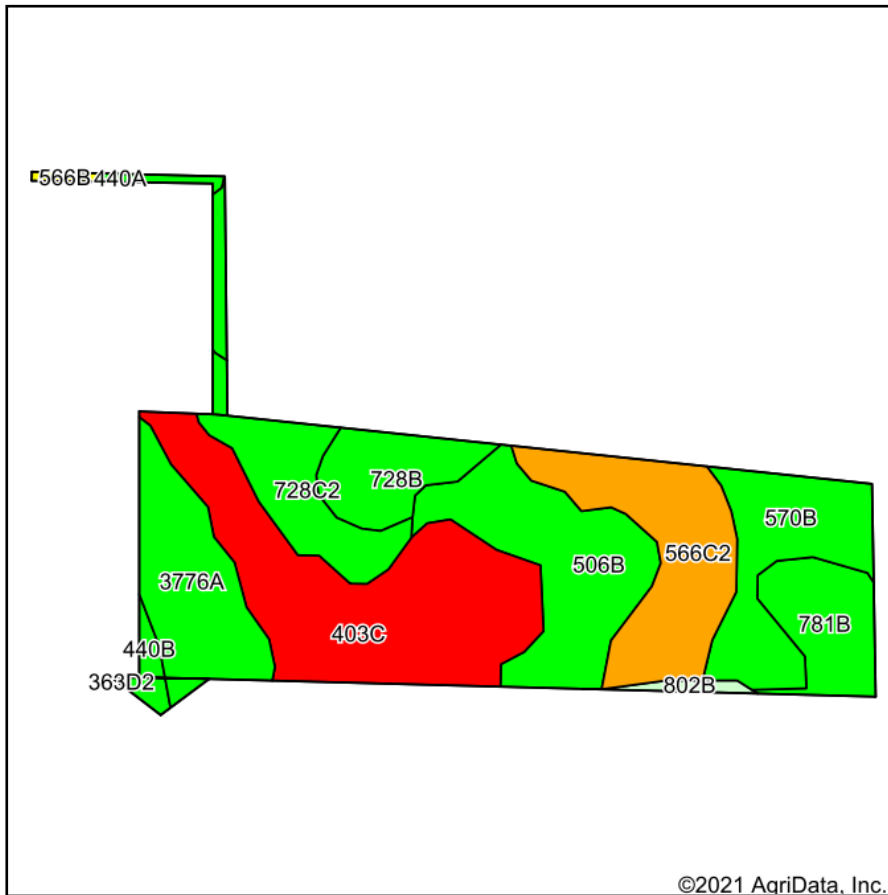


Soils Map - Total Surveyed Acres



State: **Illinois**
 County: **Winnebago**
 Location: **32-45N-1E**
 Township: **Owen**
 Acres: **41.36**
 Date: **2/12/2021**



Maps Provided By:



Code	Soil Description	Acres	Percent of field	Il. State Productivity Index Legend	Corn Bu/A	Soybeans Bu/A	Wheat Bu/A	Oats Bu/A	Alfalfa d hay, T/A	Crop productivity index for optimum management
**403C	Elizabeth silt loam, 5 to 10 percent slopes	10.17	24.6%		**76	**27	**32	**36	0.00	**59
**506B	Hitt silt loam, 2 to 5 percent slopes	6.11	14.8%		**156	**52	**62	**82	**4.59	**117
**566C2	Rockton and Dodgeville soils, 5 to 10 percent slopes, eroded	5.68	13.7%		**126	**43	**56	**68	**3.66	**96
3776A	Comfrey loam, 0 to 2 percent slopes, frequently flooded	4.58	11.1%		185	61	69	89	0.00	138
**570B	Martinsville silt loam, 2 to 4 percent slopes	4.47	10.8%		**153	**49	**62	**74	**4.47	**113
**728C2	Winnebago silt loam, 5 to 10 percent slopes, eroded	3.35	8.1%		**153	**50	**61	**78	**4.44	**113
**728B	Winnebago silt loam, 2 to 5 percent slopes	3.03	7.3%		**162	**53	**65	**83	**4.72	**121
**781B	Friesland fine sandy loam, 2 to 5 percent slopes	2.79	6.7%		**157	**51	**63	**79	**4.84	**118
**440B	Jasper silt loam, 2 to 5 percent slopes	0.52	1.3%		**173	**56	**70	**93	**5.71	**129
802B	Orthents, loamy, undulating	0.29	0.7%						.00	
**506C2	Hitt silt loam, 5 to 10 percent slopes, eroded	0.16	0.4%		**147	**49	**59	**77	**4.32	**110
**566B	Rockton and Dodgeville soils, 2 to 5 percent slopes	0.13	0.3%		**134	**46	**59	**72	**3.90	**102
440A	Jasper silt loam, 0 to 2 percent slopes	0.08	0.2%		175	57	71	94	5.77	130
Weighted Average					134.4	44.8	54.4	67.8	2.80	101.1

Table: Optimum Crop Productivity Ratings for Illinois Soil by K.R. Olson and J.M. Lang, Office of Research, ACES, University of Illinois at Champaign-Urbana. Version: 1/2/2012 Amended Table S2 B811

Crop yields and productivity indices for optimum management (B811) are maintained at the following NRES web site: <http://soilproductivity.nres.illinois.edu/>

** Indexes adjusted for slope and erosion according to Bulletin 811 Table S3

b Soils in the southern region were not rated for oats and are shown with a zero "0".

d Soils in the poorly drained group were not rated for alfalfa and are shown with a zero "0".

*c: Using Capabilities Class Dominant Condition Aggregation Method

Soils data provided by USDA and NRCS. Soils data provided by University of Illinois at Champaign-Urbana.