

# 17500 OBER ROAD

FLINT HILLS LIMESTONE COUNTRY HOME  
RANDOLPH, KANSAS







# FLINT HILLS LIMESTONE COUNTRY HOME

3 BEDROOMS  
2 BATHROOMS  
2,600 SQ FT  
1 GARAGE  
BUILT IN 1884  
12.59 +/- ACRES

A unique 1884 limestone  
original farmhouse and  
acreage for sale with live-  
water creek situated in the  
Kansas Flint Hills.



**\$465,000**

This one of a kind farmhouse is has been beautifully restored with modern comforts and is located just minutes from Tuttle Creek Lake in rural Riley County.

Acreage:  
Total – 12.59 +/-  
Brome Field – 6 +/-  
Fenced for Livestock or Horses

Home Improvements:  
Meticulously renovated in 2014, this unique historic limestone home features tastefully done modern updates including: Updated wiring, updated PEX plumbing, Modern Septic System, High-Efficiency Central Heat/AC System.

Amenities:  
Whole-house Propane backup generator / Reverse Osmosis H2O System / RV Hook Up & Sewer Service / Private Well

Work from home?  
high-speed fiber internet service is on site

Location / Approx. Commute Times:  
Tuttle Creek Lake (6 mins) | Milford Lake (25 mins) | Manhattan, KS (30 mins)

School District:  
Blue Valley USD 384











VIEW THIS  
PROPERTY

**NICK RHODES**

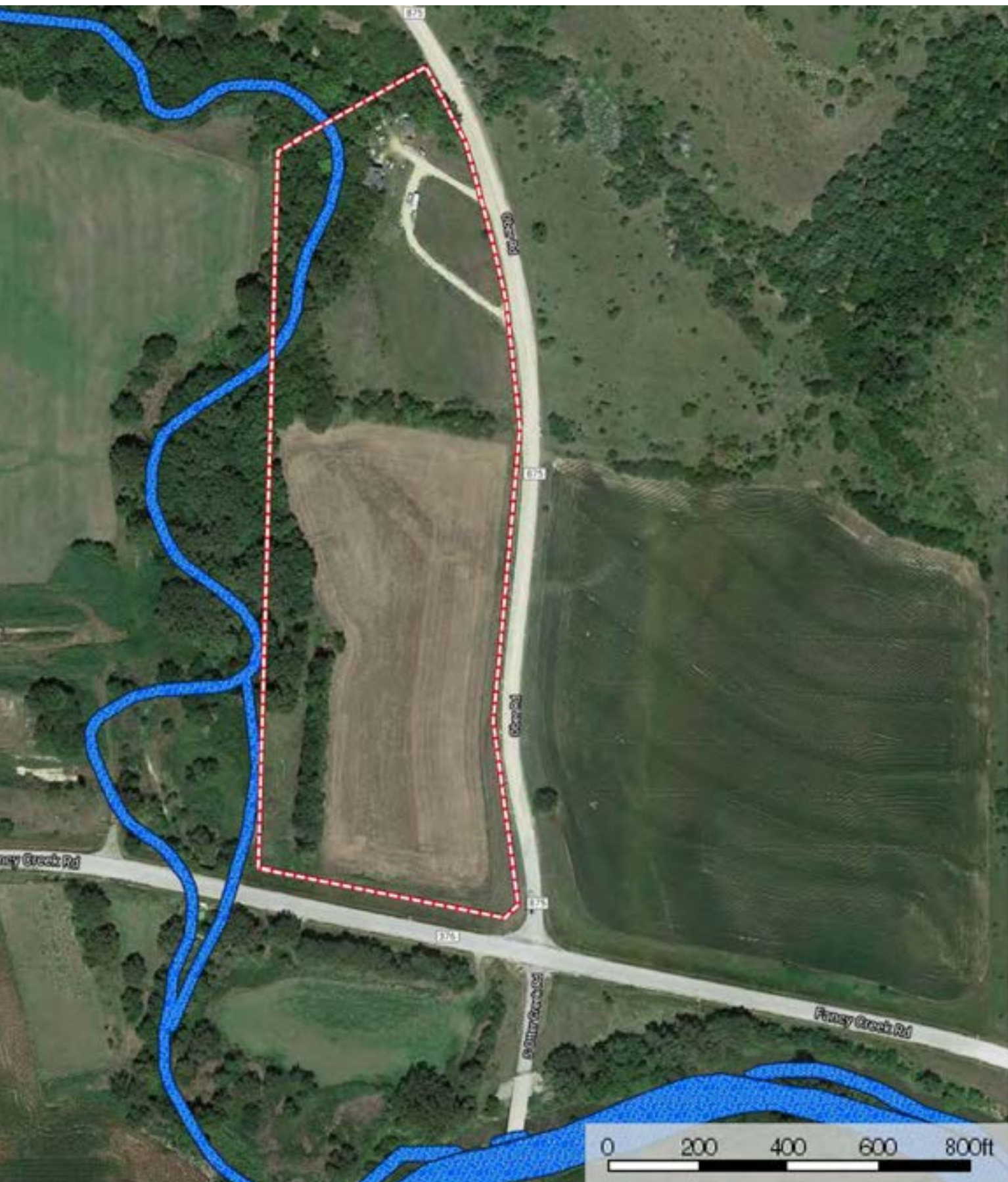
BROKER, WILDLIFE PROPERTIES

**785-620-7122**

MYWILDLIFEPROPERTY.COM











## SEE MORE PROPERTIES

CLICK THE LINKS  
TO VIEW MORE LISTINGS



PRIEST STONEHAVEN MANSION  
CONCORDIA, KS



318 ACRES  
DECATUR COUNTY, KS



485 ACRES - INVESTMENT/CONSERVATION  
MORTON COUNTY, KS



HISTORICAL CHARM  
ALMENA, KS

**MYWILDLIFEPROPERTY.COM**