

For Sale

Recreational Land

20 Acres | \$4,250 / AC



Bull Swamp & Redmond Mill Rds (Site 4 - 20 Acs)

North, SC 29112

For more information

Tombo Milliken

O: 803.744.9852 | C: 803.206.8384
tombo.milliken@naicolumbia.com

Tom Milliken

O: 803.744.9837 | C: 803.331.6999
tmilliken@naicolumbia.com

Nelson Weston, III

O: 803.744.9804 | C: 803.678.7346
nweston@naicolumbia.com

Property Highlights

- 970 +/- ft. of Bull Swamp Road Frontage
- Planted Loblolly Pine and/or natural regeneration throughout
- Internal road system
- Great place for a large acreage country estate
- May consider other subdivisions, but nothing less than 10 Acs
- High and dry tract that is a great place to buy and build or for recreation

OFFERING SUMMARY

Sale Price	\$85,000
Lot Size	20.0 Acres

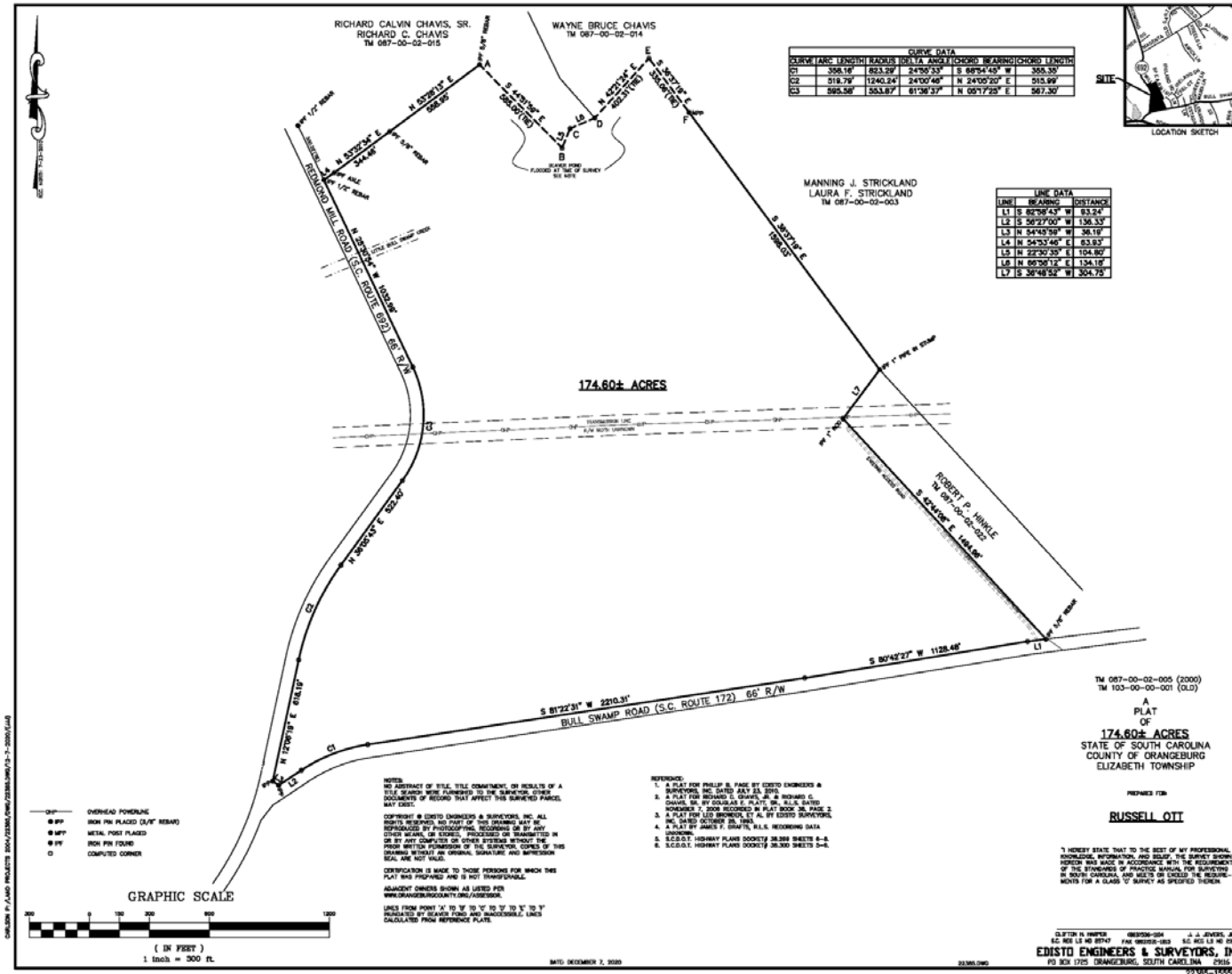
DEMOGRAPHICS

Stats	Population	Avg. HH Income	Total Households
1 Mile	158	\$46,088	61
5 Miles	3,956	\$46,251	1,558
10 Miles	21,836	\$53,375	8,566

For Sale

Recreational Land

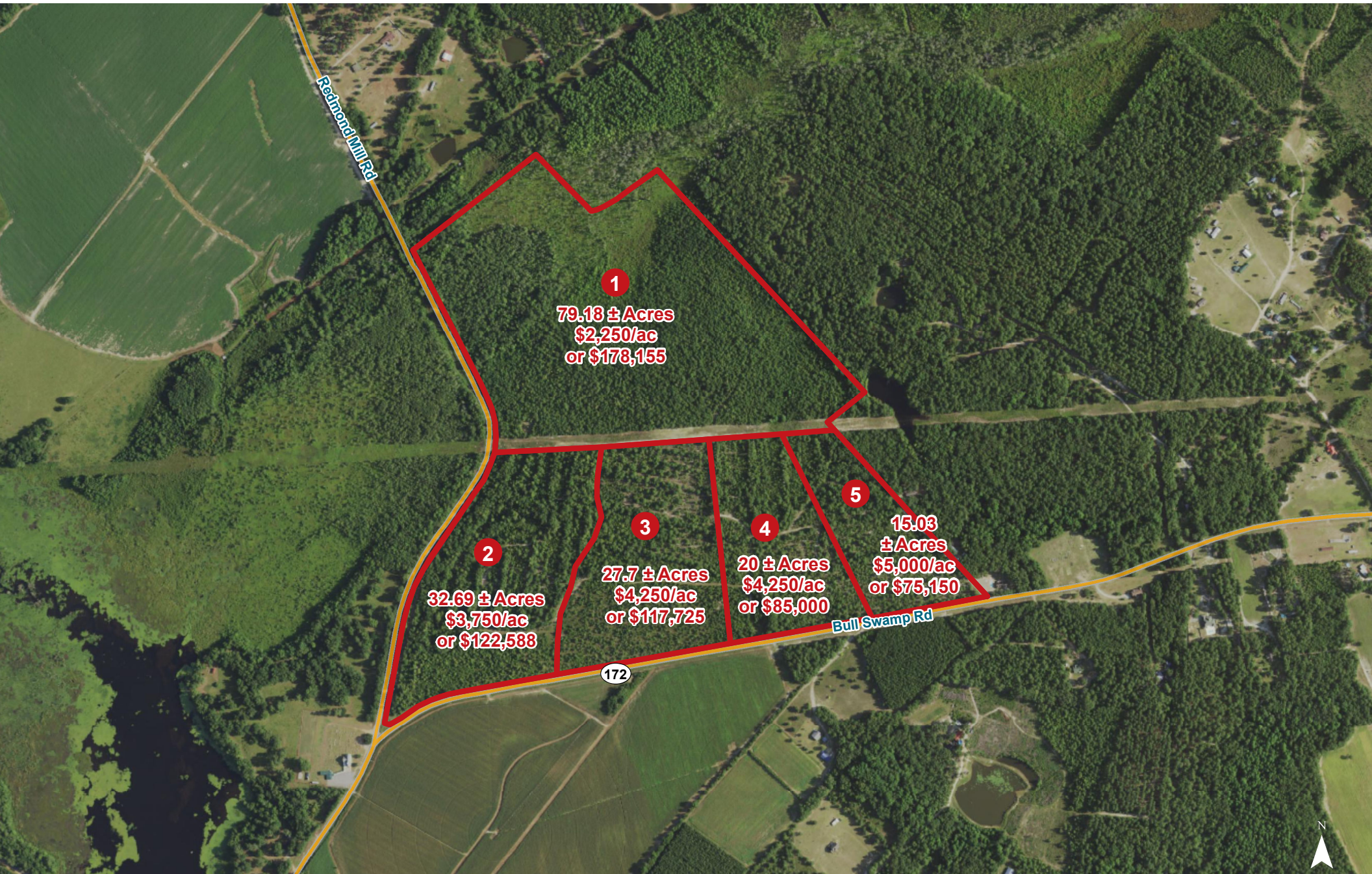
20.0 Acres | \$4,250 / AC



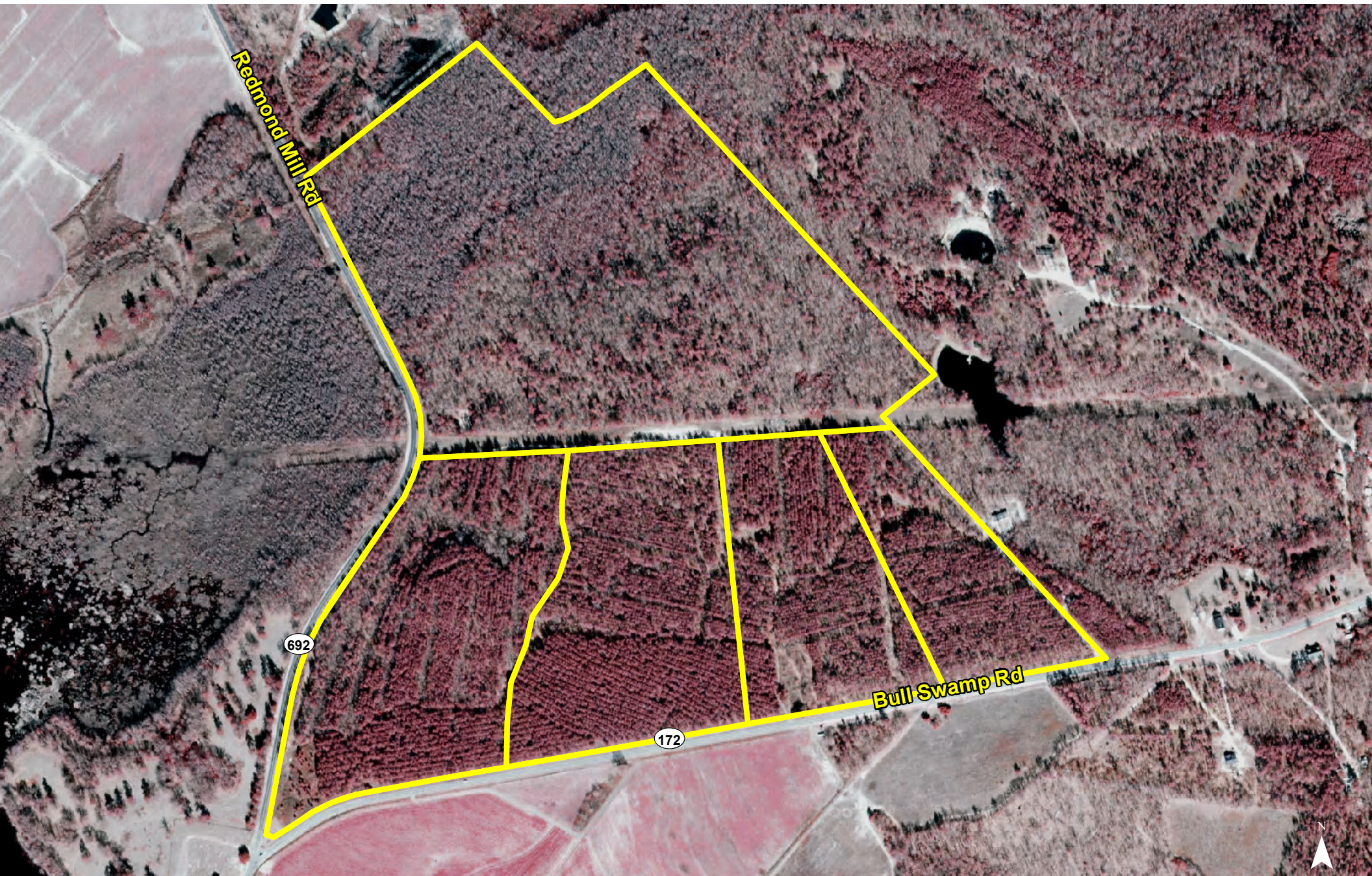
Location



Map Updated: Friday, December 18, 2020. This information submitted is not guaranteed. Although obtained from reliable sources, all information should be confirmed prior to use or reliance upon the information. This document may not be reproduced in whole or in part without the express written consent of NAI Avant.

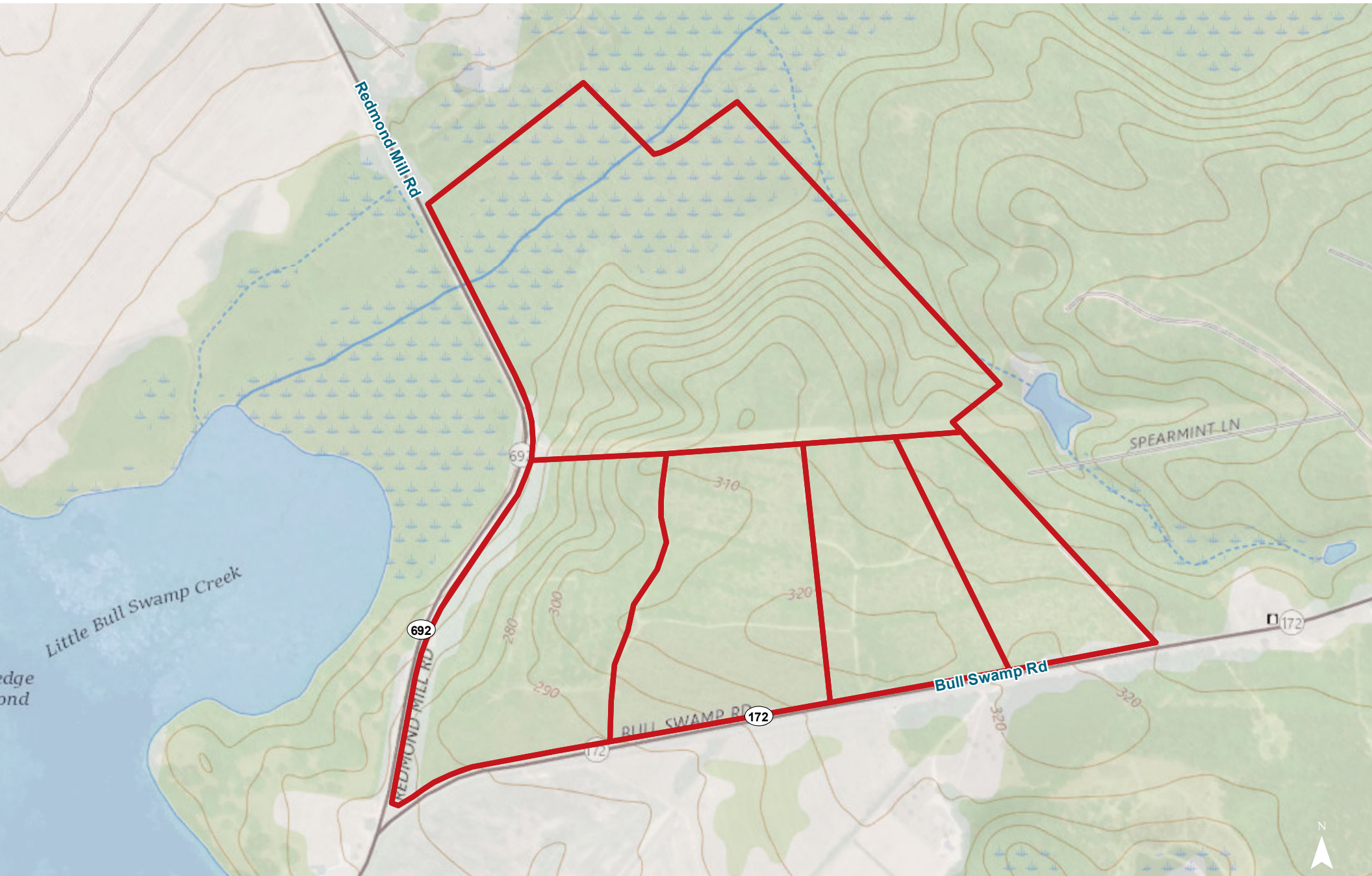


Map Updated: Monday, March 1, 2021. This information submitted is not guaranteed. Although obtained from reliable sources, all information should be confirmed prior to use or reliance upon the information. This document may not be reproduced in whole or in part without the express written consent of NAI Avant.

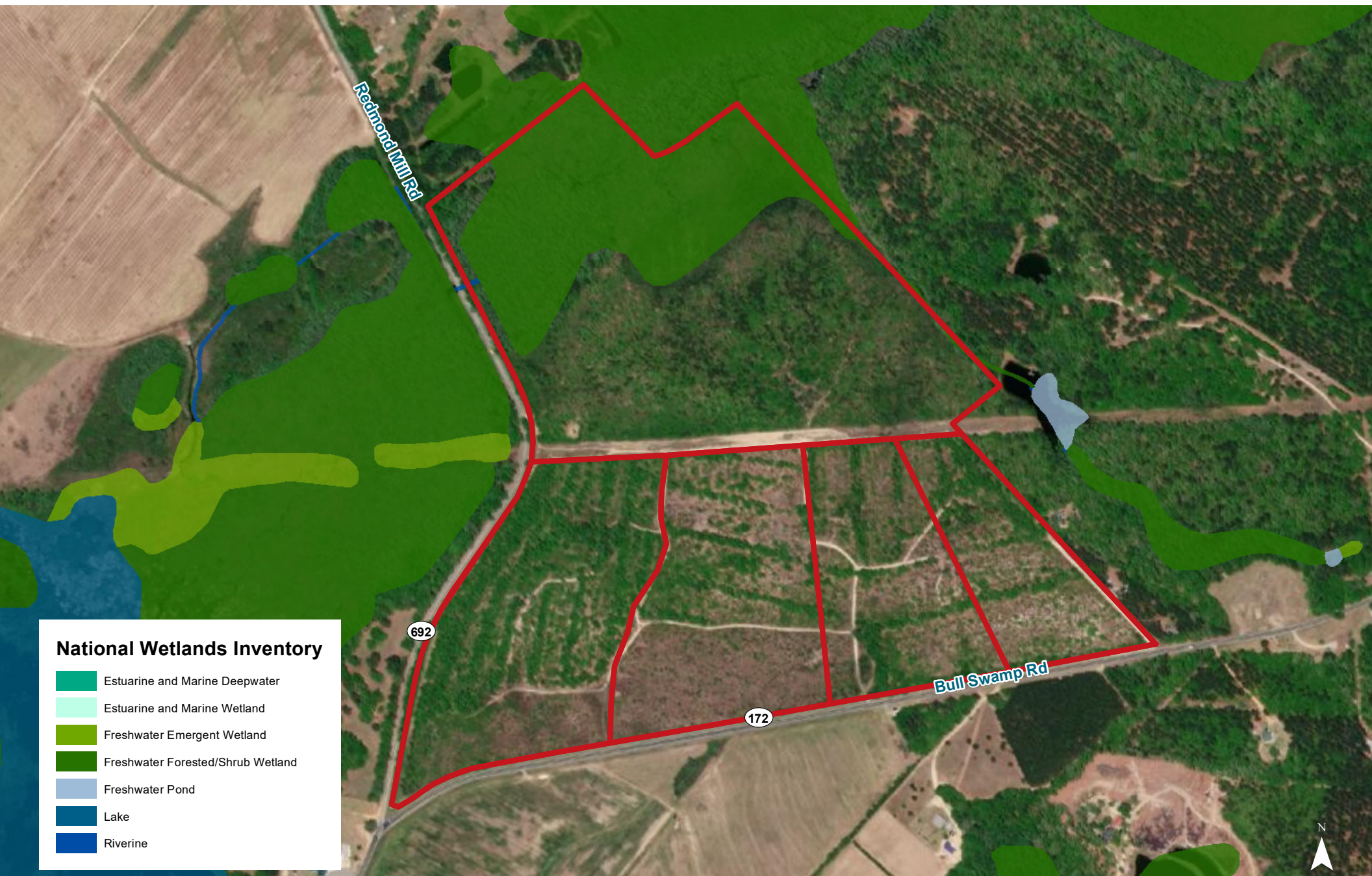


Map Updated: Friday, December 18, 2020. This information submitted is not guaranteed. Although obtained from reliable sources, all information should be confirmed prior to use or reliance upon the information. This document may not be reproduced in whole or in part without the express written consent of NAI Avant.

Topographical Map

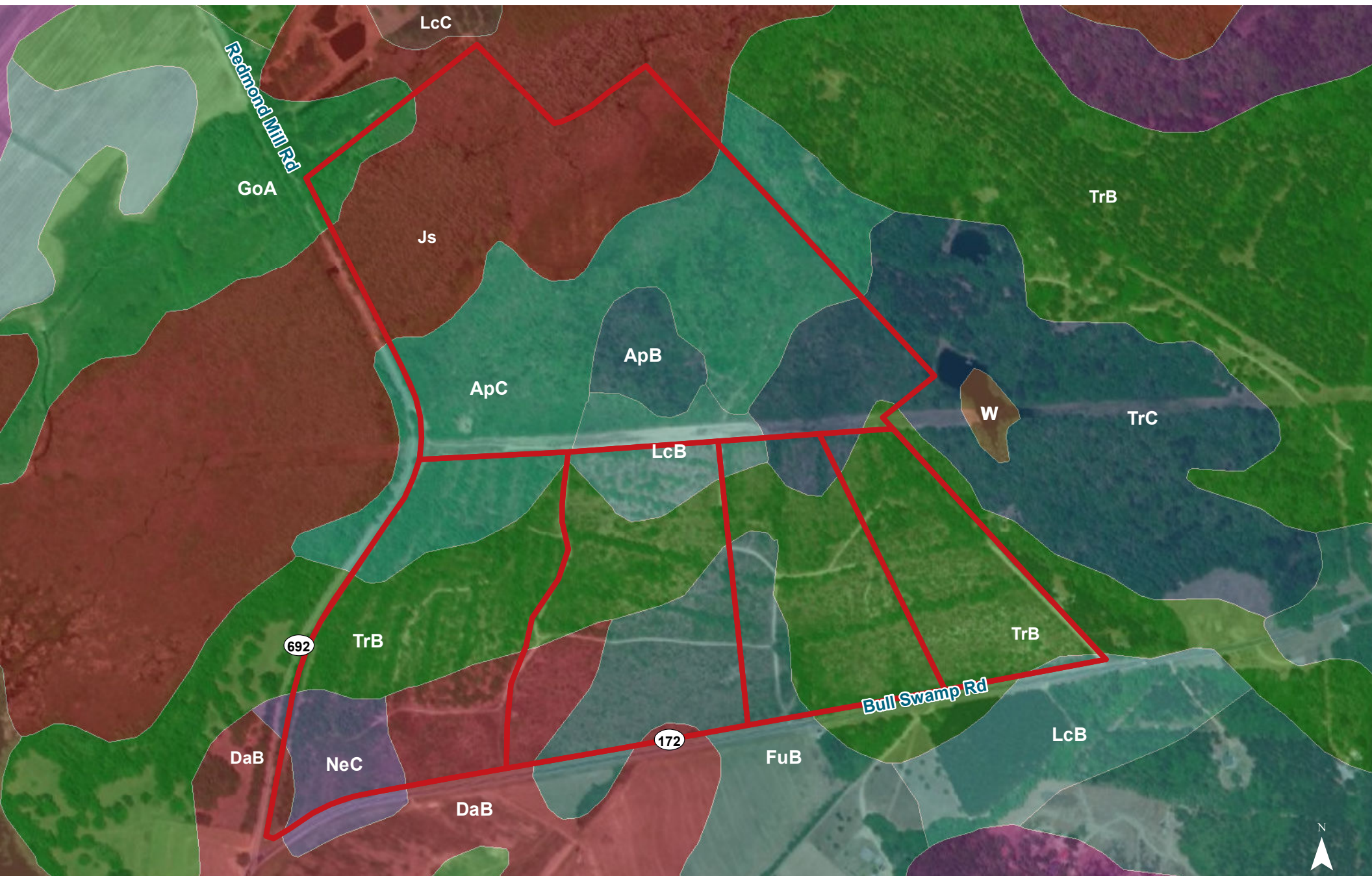


Map Updated: Friday, December 18, 2020. This information submitted is not guaranteed. Although obtained from reliable sources, all information should be confirmed prior to use or reliance upon the information. This document may not be reproduced in whole or in part without the express written consent of NAI Avant.



Map Updated: Friday, December 18, 2020. This information submitted is not guaranteed. Although obtained from reliable sources, all information should be confirmed prior to use or reliance upon the information. This document may not be reproduced in whole or in part without the express written consent of NAI Avant.

Soil Survey



Map Updated: Friday, December 18, 2020. This information submitted is not guaranteed. Although obtained from reliable sources, all information should be confirmed prior to use or reliance upon the information. This document may not be reproduced in whole or in part without the express written consent of NAI Avant.

Map Unit Description (Brief, Generated)

Orangeburg County, South Carolina

[Minor map unit components are excluded from this report]

Map unit: ApB - Alpin sand, 0 to 6 percent slopes

Component: Alpin (96%)

The Alpin component makes up 96 percent of the map unit. Slopes are 0 to 6 percent. This component is on sandhills, marine terraces, coastal plains. The parent material consists of sandy marine deposits. Depth to a root restrictive layer is greater than 60 inches. The natural drainage class is excessively drained. Water movement in the most restrictive layer is high. Available water to a depth of 60 inches is low. Shrink-swell potential is low. This soil is not flooded. It is not ponded. There is no zone of water saturation within a depth of 72 inches. Organic matter content in the surface horizon is about 1 percent. Nonirrigated land capability classification is 4s. This soil does not meet hydric criteria.

Map unit: ApC - Alpin sand, 6 to 10 percent slopes

Component: Alpin (90%)

The Alpin component makes up 90 percent of the map unit. Slopes are 6 to 10 percent. This component is on sandhills, marine terraces, coastal plains. The parent material consists of sandy marine deposits. Depth to a root restrictive layer is greater than 60 inches. The natural drainage class is excessively drained. Water movement in the most restrictive layer is high. Available water to a depth of 60 inches is low. Shrink-swell potential is low. This soil is not flooded. It is not ponded. There is no zone of water saturation within a depth of 72 inches. Organic matter content in the surface horizon is about 1 percent. Nonirrigated land capability classification is 6s. This soil does not meet hydric criteria.

Map Unit Description (Brief, Generated)

Orangeburg County, South Carolina

Map unit: DaB - Dothan loamy sand, 2 to 6 percent slopes

Component: Dothan (96%)

The Dothan component makes up 96 percent of the map unit. Slopes are 2 to 6 percent. This component is on marine terraces, coastal plains. The parent material consists of loamy marine deposits. Depth to a root restrictive layer is greater than 60 inches. The natural drainage class is well drained. Water movement in the most restrictive layer is moderately high. Available water to a depth of 60 inches is moderate. Shrink-swell potential is low. This soil is not flooded. It is not ponded. A seasonal zone of water saturation is at 36 inches during January, February, March, April. Organic matter content in the surface horizon is about 0 percent. Nonirrigated land capability classification is 2e. This soil does not meet hydric criteria.

Map unit: FuB - Fuquay sand, 0 to 6 percent slopes

Component: Fuquay (100%)

The Fuquay component makes up 100 percent of the map unit. Slopes are 0 to 6 percent. This component is on marine terraces, coastal plains. The parent material consists of loamy marine deposits. Depth to a root restrictive layer is greater than 60 inches. The natural drainage class is well drained. Water movement in the most restrictive layer is moderately low. Available water to a depth of 60 inches is moderate. Shrink-swell potential is low. This soil is not flooded. It is not ponded. A seasonal zone of water saturation is at 48 inches during January, February, March. Organic matter content in the surface horizon is about 1 percent. Nonirrigated land capability classification is 2s. This soil does not meet hydric criteria.

Map unit: GoA - Goldsboro sandy loam, 0 to 2 percent slopes

Component: Goldsboro (96%)

The Goldsboro component makes up 96 percent of the map unit. Slopes are 0 to 2 percent. This component is on coastal plains, marine terraces. The parent material consists of loamy marine deposits. Depth to a root restrictive layer is greater than 60 inches. The natural drainage class is moderately well drained. Water movement in the most restrictive layer is moderately high. Available water to a depth of 60 inches is moderate. Shrink-swell potential is low. This soil is not flooded. It is not ponded. A seasonal zone of water saturation is at 24 inches during January, February, March, April, December. Organic matter content in the surface horizon is about 1 percent. Nonirrigated land capability classification is 2w. This soil does not meet hydric criteria.

Map Unit Description (Brief, Generated)

Orangeburg County, South Carolina

Map unit: Js - Johnston sandy loam

Component: Johnston (90%)

The Johnston component makes up 90 percent of the map unit. Slopes are 0 to 2 percent. This component is on coastal plains, flood plains. The parent material consists of loamy fluviomarine deposits. Depth to a root restrictive layer is greater than 60 inches. The natural drainage class is very poorly drained. Water movement in the most restrictive layer is high. Available water to a depth of 60 inches is moderate. Shrink-swell potential is low. This soil is frequently flooded. It is occasionally ponded. A seasonal zone of water saturation is at 0 inches during January, February, March, April, May, June, July, November, December. Organic matter content in the surface horizon is about 6 percent. Nonirrigated land capability classification is 7w. This soil meets hydric criteria.

Map unit: LcB - Lucy loamy sand, 0 to 6 percent slopes

Component: Lucy (100%)

The Lucy component makes up 100 percent of the map unit. Slopes are 0 to 6 percent. This component is on marine terraces, coastal plains. The parent material consists of loamy marine deposits. Depth to a root restrictive layer is greater than 60 inches. The natural drainage class is well drained. Water movement in the most restrictive layer is moderately high. Available water to a depth of 60 inches is moderate. Shrink-swell potential is low. This soil is not flooded. It is not ponded. There is no zone of water saturation within a depth of 72 inches. Organic matter content in the surface horizon is about 1 percent. Nonirrigated land capability classification is 2s. This soil does not meet hydric criteria.

Map Unit Description (Brief, Generated)

Orangeburg County, South Carolina

Map unit: LcC - Lucy loamy sand, 6 to 10 percent slopes

Component: Lucy (100%)

The Lucy component makes up 100 percent of the map unit. Slopes are 6 to 10 percent. This component is on coastal plains, marine terraces. The parent material consists of loamy marine deposits. Depth to a root restrictive layer is greater than 60 inches. The natural drainage class is well drained. Water movement in the most restrictive layer is moderately high. Available water to a depth of 60 inches is moderate. Shrink-swell potential is low. This soil is not flooded. It is not ponded. There is no zone of water saturation within a depth of 72 inches. Organic matter content in the surface horizon is about 1 percent. Nonirrigated land capability classification is 4s. This soil does not meet hydric criteria.

Map unit: NeC - Neeses loamy sand, 6 to 10 percent slopes

Component: Neeses (100%)

The Neeses component makes up 100 percent of the map unit. Slopes are 6 to 10 percent. This component is on coastal plains, marine terraces. The parent material consists of clayey marine deposits. Depth to a root restrictive layer is greater than 60 inches. The natural drainage class is well drained. Water movement in the most restrictive layer is low. Available water to a depth of 60 inches is moderate. Shrink-swell potential is low. This soil is not flooded. It is not ponded. There is no zone of water saturation within a depth of 72 inches. Organic matter content in the surface horizon is about 1 percent. Nonirrigated land capability classification is 4e. This soil does not meet hydric criteria.

Map unit: TrB - Troup sand, 0 to 6 percent slopes

Component: Troup (90%)

The Troup component makes up 90 percent of the map unit. Slopes are 0 to 6 percent. This component is on coastal plains, marine terraces, sandhills. The parent material consists of sandy and/or loamy marine deposits. Depth to a root restrictive layer is greater than 60 inches. The natural drainage class is somewhat excessively drained. Water movement in the most restrictive layer is moderately high. Available water to a depth of 60 inches is low. Shrink-swell potential is low. This soil is not flooded. It is not ponded. There is no zone of water saturation within a depth of 72 inches. Organic matter content in the surface horizon is about 1 percent. Nonirrigated land capability classification is 3s. This soil does not meet hydric criteria.

Map Unit Description (Brief, Generated)

Orangeburg County, South Carolina

Map unit: TrC - Troup sand, 6 to 10 percent slopes

Component: Troup (100%)

The Troup component makes up 100 percent of the map unit. Slopes are 6 to 10 percent. This component is on sandhills, coastal plains, marine terraces. The parent material consists of sandy and/or loamy marine deposits. Depth to a root restrictive layer is greater than 60 inches. The natural drainage class is somewhat excessively drained. Water movement in the most restrictive layer is moderately high. Available water to a depth of 60 inches is low. Shrink-swell potential is low. This soil is not flooded. It is not ponded. There is no zone of water saturation within a depth of 72 inches. Organic matter content in the surface horizon is about 1 percent. Nonirrigated land capability classification is 6s. This soil does not meet hydric criteria.