



# 201 +/- Acre Missouri Recreational Property for Sale - Ralls County

**T R O P H Y**  
PROPERTIES AND AUCTION  
LAND | RECREATIONAL | RESIDENTIAL

www.TrophyPA.com • (855) 573-5263 • leads@trophyapa.com

**NEW PRICE!**



**PROPERTY ADDRESS:**

15871 Hwy 79  
New London, MO 63459

**PRICE:** \$664,000

**ACRES:** 201

**COUNTY:** Ralls

**PROPERTY HIGHLIGHTS:**

- 201 +/- acres with mature timber
- 4.5 acre stocked lake
- 3 bedroom earthen home, unfinished
- 40X60 shed with gravel floor
- Excellent hunting

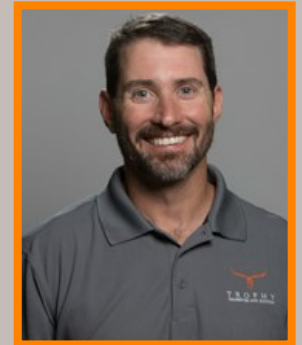
**PROPERTY DESCRIPTION:**

Tucked away in the hills of southern Ralls County, Missouri, you will find this 201 +/- acre farm waiting for its new owner. With a combination of timber, food plots, lake, and earthen home, this property has so much to offer those looking to slip in the quiet countryside.

The 3 bedroom, earthen home overlooks a 4.5 acre stocked lake, offering a gorgeous view of the landscape. The home is a blank slate, waiting for the new owner to remodel into the home that suits their needs or tear down and start over.

There's a 40X60 shed with a gravel flooring to store your toys and equipment on this weekend retreat.

The land offers excellent hunting. The area is known for excellent deer hunting and this farm delivers. There is an extensive trail system that allows for easy access throughout the property. There is roughly 10 acres of CRP on the farm with a contract that runs through 2021.



**PRESENTED BY:**

**JASON CLEVELAND**

**Broker/Partner**

M: (636) 751-4579

P: (855) 573-5263 x701

E: jcleveland@trophyapa.com

**Trophy Properties and Auction**

15480 Clayton Road

Suite 101

Ballwin, MO 63011

www.Trophyapa.com

leads@trophyapa.com

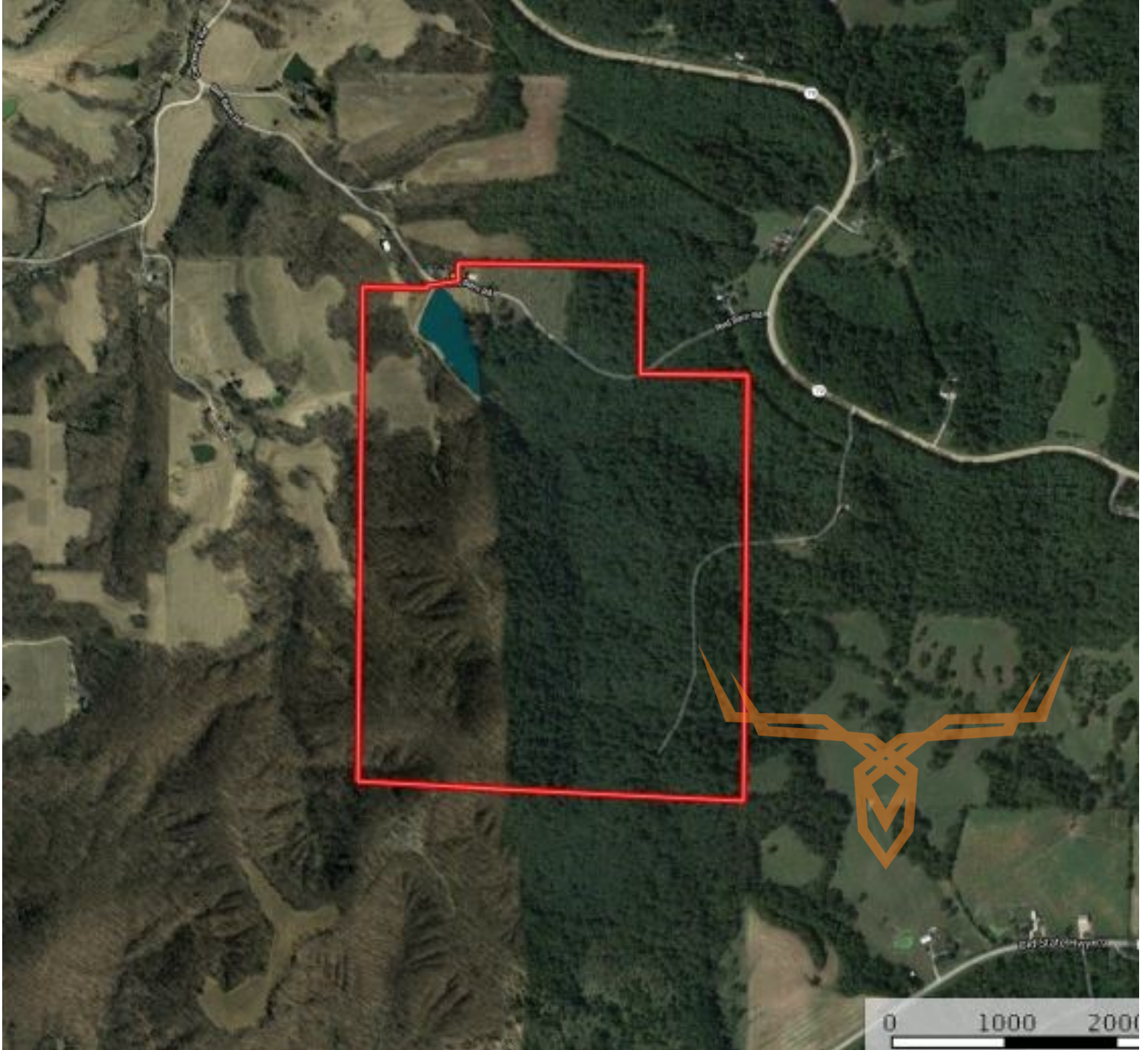




**T R O P H Y**  
PROPERTIES AND AUCTION  
LAND | RECREATIONAL | RESIDENTIAL

# 201 +/- Acre Missouri Recreational Property for Sale - Ralls County

[www.TrophyPA.com](http://www.TrophyPA.com) • (855) 573-5263 • [leads@trophy.com](mailto:leads@trophy.com)



Broker does not guarantee the accuracy of sq. ft., lot size, or other information, buyer is advised to independently verify the accuracy of information through personal inspection and with appropriate professionals