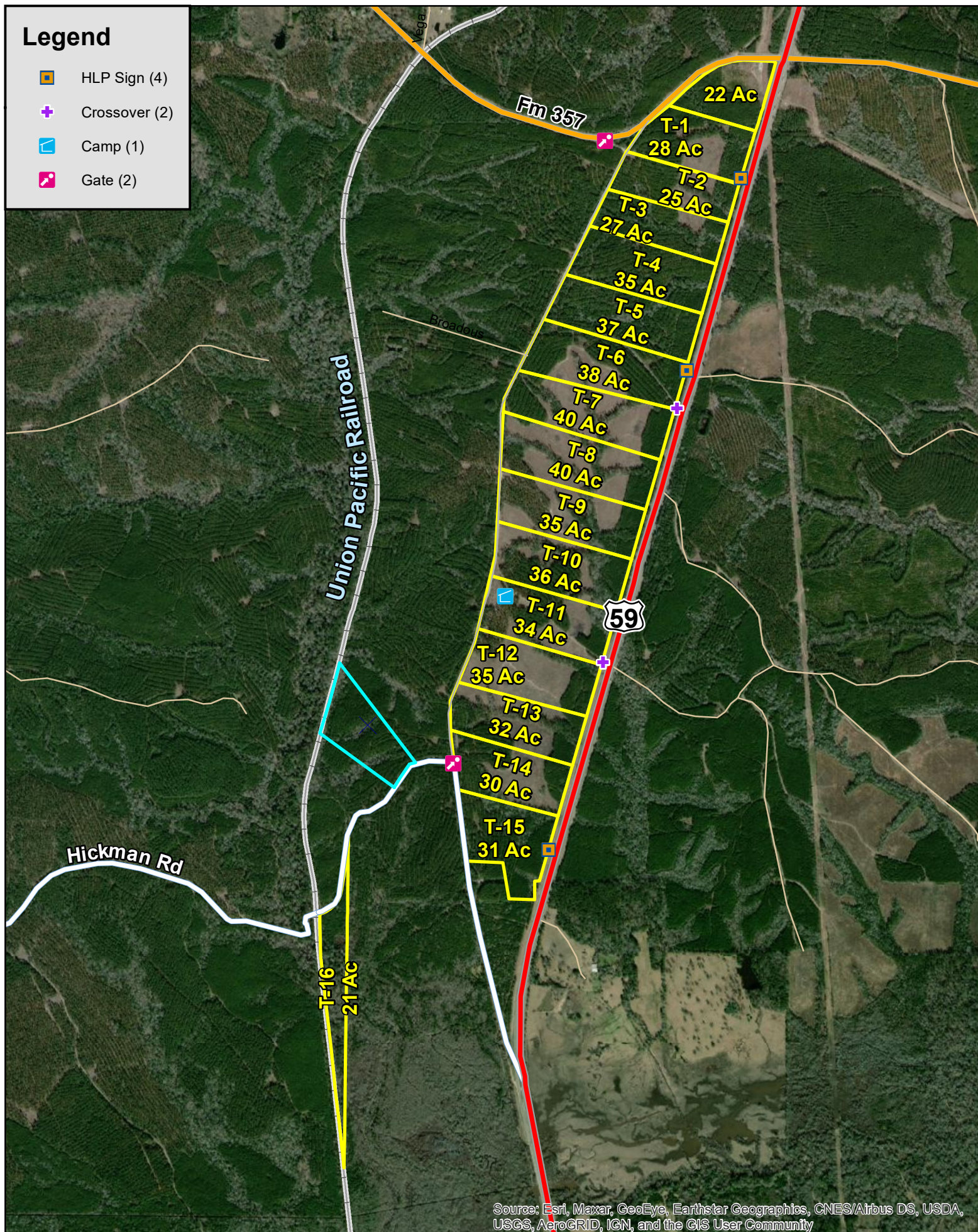


Legend

- HLP Sign (4)
- Crossover (2)
- Camp (1)
- Gate (2)



Source: Esri, Maxar, GeoEye, Earthstar Geographics, CNES/Airbus DS, USDA, USGS, AeroGRID, IGN, and the GIS User Community

Corrigan, Polk Co., TX

For illustration purposes only.

