

# Northern Cass County

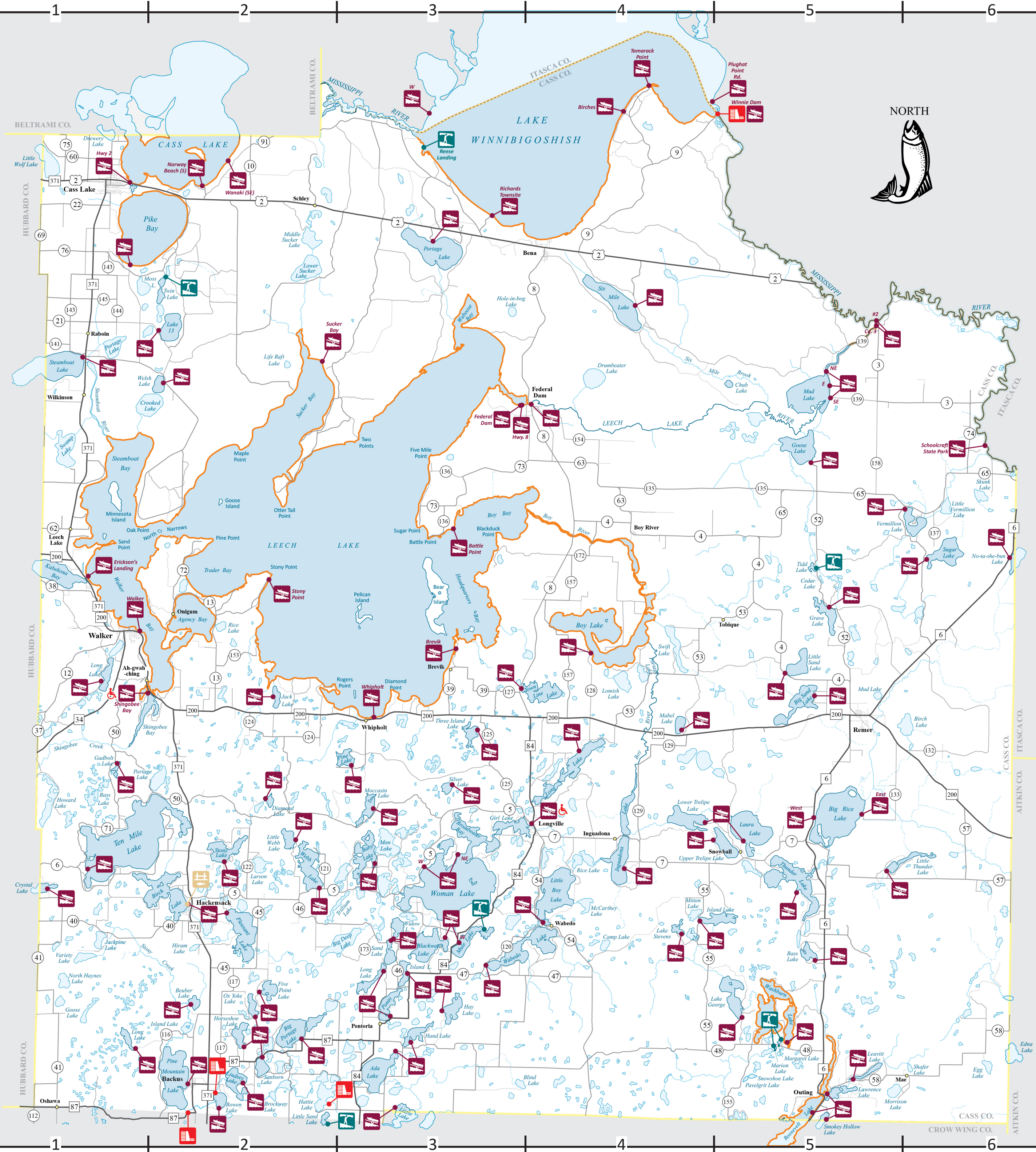
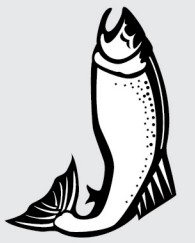
- Water Access (Trailer)
- Water Access (Carry in)
- Fishing Pier
- Dam (on State Water Trail)
- Lake with Access
- Lake With No Access
- Lake with Invasive Species Visit [mndnr.gov/invasives](http://mndnr.gov/invasives) for more information
- Accessible Access (see text side for more information)
- River with Access
- River or Stream
- State Water Trail

0 1 2 3 4 5 6  
Scale in Miles

## Location Map

See Southern Cass/  
Wadena map for this  
portion of Cass Co.

NORTH





CASS COUNTY (northern)



Includes fishing piers and shorefishing sites



Clean your watercraft, Drain all water, Dispose of unused bait.

Federal Aid Project funded by your purchase of fishing equipment and motor boat fuels.



Minnesota State Parks and Trails-Bemidji (218) 308-2372

The DNR Information Center The DNR's Information Center is available to provide free publications of facilities and services as well as answers questions pertaining to DNR recreational opportunities in Minnesota.

500 Lafayette Road, St. Paul, MN 55155-4040 651-296-6157 (local) or 1-888-MINNDNR

mndnr.gov

Photos: Minnesota Department of Natural Resources, unless otherwise noted. Persons with disabilities may request this information in an alternative format.



Public Water Access in Minnesota:

The Minnesota DNR State Parks and Trail's water recreation program provides approximately 1,650 boat accesses, over 365 fishing piers and shore fishing sites and manages 35 designated Water Trails in Minnesota. The DNR, Federal Government and local communities operate boat accesses. See the table on the right for specific site information. The DNR boating programs are funded by user fees including boat license & gas tax related to marine use.

Public accesses are usually open 24 hours unless otherwise posted. Most sites have launch ramps but some sites, especially on smaller rivers, are carry in only. Bathrooms and docks are usually located only on the larger and busier sites.

Public Water Access Rules - The launch area must be kept clear and the following activities are unlawful: littering, camping, shooting, building fires, and consuming alcoholic beverages. See Minnesota Rules, chapter 6218 for complete rules.

Boating in Minnesota

The annual Minnesota Boating Guide summarizes Minnesota's boating laws and regulations in an easy-to-read form. The guide supplies information about operating watercraft on the state's lakes and rivers. Operator age restrictions apply to operators 17 years old and younger.

Licensing - All motorized and non-motorized watercraft must be licensed by the Department of Natural Resources (DNR). Please contact the DNR License Bureau for information.



Fishing in Minnesota

Fishing Regulations and Licensing - All persons 16 and older are required to have the appropriate license with them when fishing. Licenses are available through the DNR License Bureau, most County Auditors and many stores that sell fishing related goods. Trout fishing requires a trout stamp. For more information call the DNR information Center at (651) 296-6157 or 1-888-646-6367. To purchase a license by phone 24 hours a day, call 1-888-MN-LICENSE (665-4236).

Selective Harvest Fishing - Improved technology and increased fishing have caused the quality of fishing to decline in many waters. Practicing "Selective Harvest" offers anglers an opportunity to take some fish home while releasing others back into the water to improve fishing quality. Here are some tips to use for effective Selective Harvest fishing:

- Use barbless hooks
- Play the fish quickly and handle the fish carefully
- Never hold the fish by the eyes
- Use a needle nose pliers to remove hooks or cut the line if it is too deep
- Ease the fish back into the water, do not throw it back.

Safe Boating

Life Jackets - On all boats (except a sailboard) regardless of length there must be a readily accessible Coast Guard approved wearable life jacket for each person on board. In addition, on boats 16 feet or longer, except canoes and kayaks, there must also be at least one Coast Guard approved throwable device, such as a ring buoy or seat cushion.

Boating While Intoxicated (BWI) - Boating while intoxicated is illegal. For persons found to be under the influence there are significant penalties, including fines and possible jail sentences.

Personal Watercraft - Special laws apply including wearing a life jacket and operating at slow no wake speed at certain distances from other watercraft, swimmers and other objects in the water. Operator age restrictions also apply. Consult the Boating Guide for more information. A DNR safety video is available free of charge.



Aquatic Invasive Species (AIS) Laws and Requirements:

The DNR lists lakes and rivers as "infested" with certain aquatic invasive species.

If you are harvesting bait, commercial fishing, or diverting or taking water, you might need to follow special regulations in infested waters.

To identify an infested water, look for orange Invasive Species Alert signs at the access. You can also use LakeFinder to find out if a particular lake is listed as infested: mndnr.gov/lakefind. For more information about infested waters, including an up-to-date infested waters list and additional location information, visit mndnr.gov/invasives.

Before leaving the water access or shoreline property, you MUST:

- Clean off ALL aquatic plants and animals
- Drain all water including bilge, livewells, baitwells, bait buckets, motor and ballast tanks
- Pull the plug and leave it out

Get into the habit of taking these three simple steps, and it will soon become part of your routine. Pull away from the boat ramp area. Check for and remove plants while strapping the boat down. Pull the plug when adjusting the motor. If you have other people (especially kids) with you, have them help! Adding a few minutes will help safeguard our waters.

Cleaning water-related equipment is just as important as cleaning boats, so while you're cleaning your boat, please remember to also:

- Clean anchors, ropes, fishing tackle, and other objects that were in the water. Many species can be transported in the mud or in fishing lines and rope
- Dump water out of canoes, kayaks, and other watercraft before leaving

These are YOUR waters and it is YOUR responsibility to inspect, clean, and drain your boats!

AIS Bait Laws

It is illegal to transport lake and river water. To save your bait (minnows or leeches), the DNR recommends bringing "fish safe", treated water from home and keeping it in your vehicle or cooler. Bringing ice can be a good idea on warm days to cool down the water.

DO NOT dump unwanted bait into water bodies or on the shoreline! Unwanted bait belongs in the trash or a designated compost bin. Unwanted worms must be disposed of in the trash.



Working Together to Protect the Waters

Watercraft Inspectors are here to ensure watercraft and equipment are "clean in, clean out!" If you need assistance, have questions about the laws, or are curious about the program, please ask!

Ways you can help the Watercraft Inspectors:

- Please clean your boat and pull your plug as soon as you are safely able to. That way when the inspector comes, the inspection process will move quickly
  - If there is a Decontamination Unit present, please follow all the instructions given by the inspectors, for your safety and theirs. There will be plenty of time to ask questions and watch them work from a safe distance
- Ways the Watercraft Inspectors can help you:
- The inspectors have tools, wrenches and pliers, so if you are having trouble with your plug, ask!
  - If there are weeds that are hard to reach, inspectors can also help pull weeds off boats or other such tasks. They also have grabbing tools for plants

When you see the Watercraft Inspectors, please be cooperative. The law requires compliance with inspectors, and it will help everyone to be on their way in a timely and pleasant manner.

Public Water Accesses in northern Cass County

Water Body Name	Map Grid Location	Ramp Type	Fish Species	Administrator	Water Body Name	Map Grid Location	Ramp Type	Fish Species	Administrator
Ada Lake	F3	concrete	C, LB, N, S, W	DNR	Lower Trelipe Lake	E4	concrete	C, LB, N, S, W	DNR
Baby Lake	E3	concrete	C, LB, N, W, M	DNR	Mabel Lake	D4	earth	LB, N, S, W	USFS
Beuber Lake	F2	concrete	C, LB, N, S	DNR	Margaret Lake	F5	carry in	C, N, S, W	DNR
Bass Lake	F5	concrete	C, N, S, SB	DNR	Marion Lake	F5	carry in	ST	DNR
Big Portage Lake	F2	concrete	C, LB, N, S, W	DNR	Winnie Dam	A5	concrete	Various	USFS/DNR
Big Rice Lake (West)	E5	earth	N / A	USFS	#2	B5	concrete	Various	USFS
Big Rice Lake (East)	E5	concrete	N / A	DNR	#3	B5	concrete	Various	USFS
Big Sand Lake	D5	earth	C, LB, N, S, W	City	* Schoolcraft State Park	C6	concrete	Various	DNR
Birch Lake	E2	concrete	C, LB, N, S, W	City	Moccasin Lake	E3	concrete	LB, N, S	USFS
Birch Lake	E2	fishing pier	C, LB, N, S, W	DNR	Mud Lake (NE)	B5	concrete	N / A	USFS
Blackwater Lake	E3	concrete	C, LB, N, S, W	DNR	Mud Lake (E)	B5	earth	N / A	USFS
Bowen Lake	F2	concrete	C, LB, N, S	DNR	Mud Lake (SE)	C5	gravel	N / A	USFS
Boy Lake	D4	concrete	C, LB, M, N, S, W	DNR	Mule Lake (W)	E3	concrete	C, N, S, SB, W	DNR
Cass Lake (Norway Beach S)	A2	concrete	M, N, S, W	USFS	Mule Lake (W)	E3	carry in	C, N, S, SB, W	DNR
Cass Lake (Wanaki SE)	A2	concrete	M, N, S, W	USFS	No-ta-she-bun Lake	C6	concrete	C, N, LB, S, W	DNR
Cass Lake (Hwy 2)	A1	concrete	M, N, S, W	DNR	Ox Yoke Lake	F2	concrete	C, LB, N, S	DNR
Crystal Lake	E1	concrete	C, LB, N, S, W	DNR	Pike Bay (South Shore)	B1	concrete	LB, M, N, S, W	USFS
Diamond Lake	E2	earth	C, LB, N, S, W	USFS	Pine Mountain Lake	F2	concrete	LB, N, S, W	City
Five Point Lake	F2	concrete	C, LB, N, S, W	DNR	Pine Lake	E3	concrete	N / A	USFS
Gadbold Lake	E1	earth	LB, N, S	USFS	Pleasant Lake	E2	concrete	C, LB, N, S, W	DNR
George Lake	F5	concrete	C, LB, N, S, W	DNR	Ponto Lake	F3	concrete	C, LB, N, S, W	DNR
Girl Lake	E4	concrete	C, LB, N, S, SB, W	City	Portage Lake	B3	earth	C, N, S, W	USFS
Goose Lake	C5	concrete	N / A	DNR	Roosevelt Lake	F5	concrete	C, LB, N, S, W	DNR
Grave Lake	D5	concrete	C, LB, N, S, W	DNR	Sanborn Lake	F2	concrete	C, LB, N, S, SB, W	DNR
Hand Lake	F3	concrete	C, LB, N, S, W	DNR	Sand Lake	E3	earth	C, LB, N, S, W	DNR
Hay Lake	F3	concrete	C, LB, N, S	DNR	Silver Lake	E3	concrete	C, LB, N, S	DNR
Horseshoe Lake	F2	concrete	C, LB, N, S, W	DNR	Six Mile Lake	B4	concrete	N, S, W	USFS
Inguadona Lake	E4	concrete	C, LB, M, N, S, W	DNR	Smokey Hollow Lake	F5	concrete	C, LB, N	DNR
Island Lake	F3	concrete	C, LB, N, S, W	DNR	Steamboat Lake	B1	concrete	C, N, S, W	DNR
Island Lake	E4	concrete	C, LB, N, S, W	DNR	Stevens Lake	E4	concrete	C, LB, N, S	DNR
Jack Lake	D2	earth	Various	County	Stony Lake	E2	concrete	C, LB, N, S, W	DNR
Laura Lake	E5	earth	C, N, S	DNR	Sugar Lake	C6	earth	C, LB, N, S, W	USFS
Lawrence Lake	F5	concrete	C, LB, N, S, W	City	Ten Mile Lake	E1	concrete	C, LB, N, S, W	DNR
Leavitt Lake	F5	concrete	LB, N, S, W	DNR	Thirteen Lake	B2	concrete	N / A	USFS
Erikson's Landing	D1	concrete	C, LB, M, N, S, W	DNR	Three Island Lake	D3	concrete	LB, N, S, W	USFS
Brevik	D3	earth	C, LB, M, N, S, W	DNR	Thunder Lake	E5	concrete	C, LB, N, W	DNR
Shingobee Island	D1	asphalt	C, LB, M, N, S, W	DNR	Tidd Lake	C5	carry in	N, S	USFS
Stony Point	D2	concrete	C, LB, M, N, S, W	USFS	Town Line Lake	D3	concrete	C, LB, N, S, W	DNR
Battle Point	C3	concrete	C, LB, M, N, S, W	DNR	Twin Lake	B2	carry in	N / A	USFS
Sucker Bay	B2	concrete	C, LB, M, N, S, W	DNR	Upper Trelipe Lake	E5	concrete	C, LB, N, S, W	DNR
Walker	D1	concrete	C, LB, M, N, S, W	City	Vermillion Lake	C6	earth	C, LB, N, S	USFS
Whipolt	D3	concrete	C, LB, M, N, S, W	MN DOT	Wabedo Lake	F3	concrete	C, LB, M, N, S, SB, W	DNR
Hwy 8	C3	concrete	C, LB, M, N, S, W	USCOE	Washburn Lake	F5	concrete	C, LB, N, S, W	DNR
Federal Dam	C3	concrete	C, LB, M, N, S, W	USCOE	Webb Lake	E2	concrete	C, LB, N, S, W	DNR
River Entrance	C3	concrete	C, LB, M, N, S, W	DNR	Welsh Lake	B2	concrete	C, N, S, W	DNR
Lindsey Lake	F2	concrete	C, LB, N, S, W	DNR	Widow Lake	E3	concrete	C, LB, N, S, W	DNR
Little Boy Lake	E4	concrete	C, LB, M, N, S, SB, W	DNR	Reese Landing	A3	carry in	C, M, N, S, W	USFS
Little Sand Lake	D5	concrete	C, LB, N, S, W	DNR	Richards Townsite	B3	concrete	C, M, N, S, W	USFS
Little Sand Lake	F2	carry in	N / A	County	Birches	A4	concrete	C, M, N, S, W	USFS
Little Thunder Lake	E5	concrete	C, LB, N, S, W	DNR	Plughat Point Rd.	A4	concrete	C, M, N, S, W	USFS
Little Webb Lake	E2	concrete	C, LB, N, W	DNR	Tamarack Point	A4	concrete	C, M, N, S, W	USFS
Lizzie Lake	F3	concrete	C, LB, N, S	DNR	W	A3	concrete	C, M, N, S, W	USFS
Long Lake (Walker)	D1	concrete	N / A	USFS	Woman Lake (NE)	E3	earth	C, N, S, W	DNR
Long Lake (Deerfield)	F1	concrete	Various	County	Woman Lake (N)	E3	concrete	C, N, S, W	DNR
Long Lake	D4	concrete	C, LB, N, S, W	DNR					
Long Lake (Ponto)	F3	concrete	LB, N, S, W	DNR					

Fish Species: C — Crappie, LB — Largemouth Bass, M — Muskellunge, N — Northern Pike, S — Sunfish, SB — Smallmouth Bass, ST — Stream Trout, W — Walleye, N / A — Not Available

Administrator: DNR - MN Dept. of Natural Resources  
MN DOT - MN Dept. of Transportation  
USFS - U.S. Forest Service  
USCOE - U.S. Corps of Engineers

\* State Park Vehicle Permit Required

Waters with Invasive Species

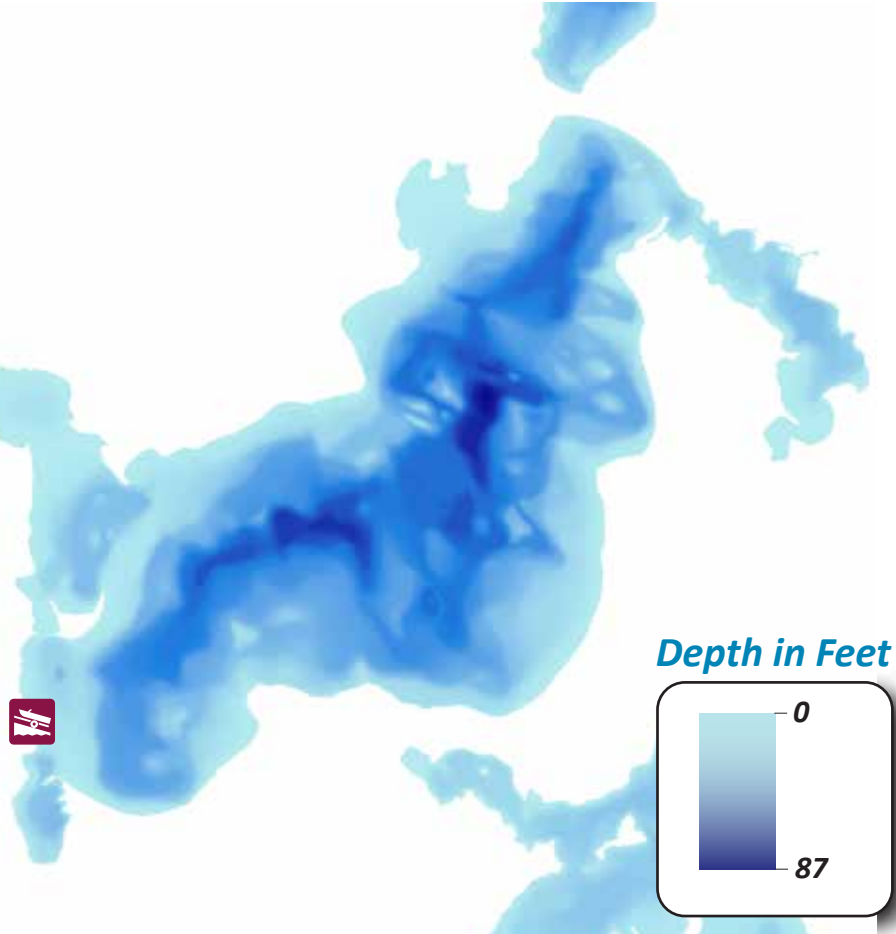
Accessible Accesses

Public water access sites developed after 2012 have been designed with accessible parking spaces and accessible routes to the top of the boat ramp. Some sites have additional accessible routes to a dock or other site amenities. These sites are identified with the red, accessible symbol shown above.

Fishing piers and developed shore fishing sites have been designed to meet the needs of people with disabilities. Parking is generally located within 300 feet of the site and there is a hard surface path from the parking area to the facility. The DNR cooperates with a variety of local units of government to maintain the fishing piers.

Sometimes, weather or vandalism can make these designed sites no longer accessible. If a site is found to be out of compliance, please report problems to the site administrator listed in this guide, or Contact the DNR Information Center, 651-296-6157 (888-MINNDNR) or email info.dnr@state.mn.us.

Ten Mile Lake



Depth in Feet