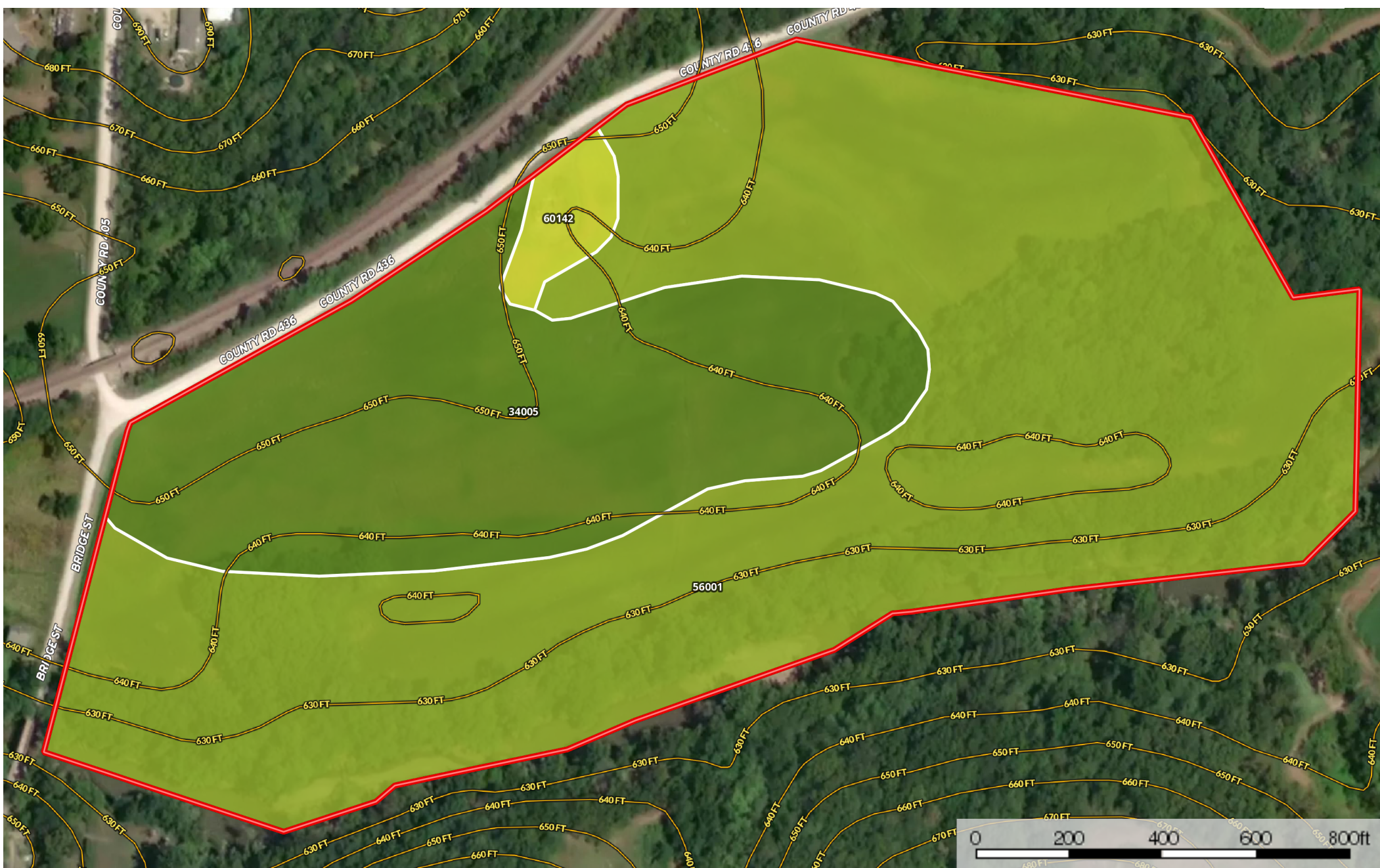



## 39 Acres Paris

Missouri, AC +/-



 Boundary

|  39.8 ac









SOIL CODE	SOIL DESCRIPTION	ACRES	%	CAP
60142	Keswick loam, 9 to 14 percent slopes, eroded	0.7	1.86	4e
34005	Gifford silt loam, 2 to 5 percent slopes, rarely flooded	11.4	28.68	2e
56001	Piopolis silty clay loam, 0 to 2 percent slopes, occasionally flooded	27.6	69.46	3w
TOTALS		39.8	100%	2.73

## Capability Legend

Increased Limitations and Hazards

Decreased Adaptability and Freedom of Choice Users

Land, Capability

								
	1	2	3	4	5	6	7	8
'Wild Life'	•	•	•	•	•	•	•	•
Forestry	•	•	•	•	•	•	•	
Limited	•	•	•	•	•	•	•	
Moderate	•	•	•	•	•	•		
Intense	•	•	•	•	•			
Limited	•	•	•	•				
Moderate	•	•	•					
Intense	•	•						
Very Intense	•							

## Grazing Cultivation

(c) climatic limitations (e) susceptibility to erosion

(s) soil limitations within the rooting zone (w) excess of water