

SUMTER COUNTY RANCHETTES

WEBSTER, FL | SUMTER COUNTY

20 ACRES OR INDIVIDUAL 10 ACRE TRACTS





SPECIFICATIONS & FEATURES

Acreage: 20 ± AC total or as individual 10 ± AC tracts

Sale Price:

- \$255,000 for all 20 ± AC
- \$150,000 per 10 ± AC tract

Price per Acre:

- \$12,750 for the 20 ± AC
- \$15,000 for the 10 ± AC

Site Address: County Road 707, Webster, FL 33597

County: Sumter

Road Frontage:

- 1,280 ± FT of paved road frontage on County Road 707 for all 20 acres
- 640 ± FT of frontage for each individual 10 acre tracts

Predominant Soil Types: Sparr Fine Sand, Tavares Fine Sand, Seffner Fine Sand, Adamsville Fine Sand

Uplands/Wetlands:

- Uplands: 19 ± AC
- Wetlands: 1 ± AC

Grass Types: Native Pasture

Zoning/FLU: AGR

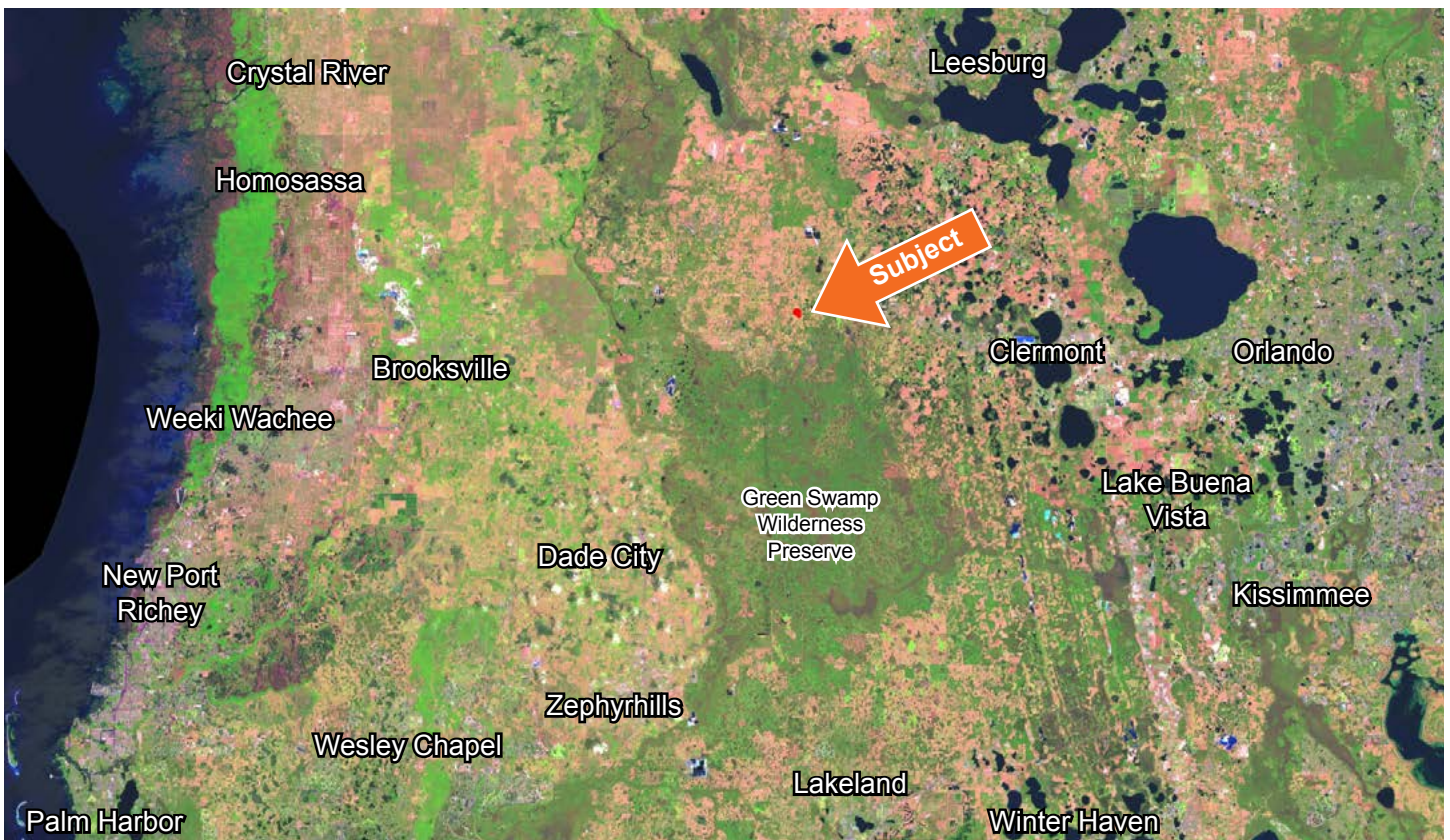
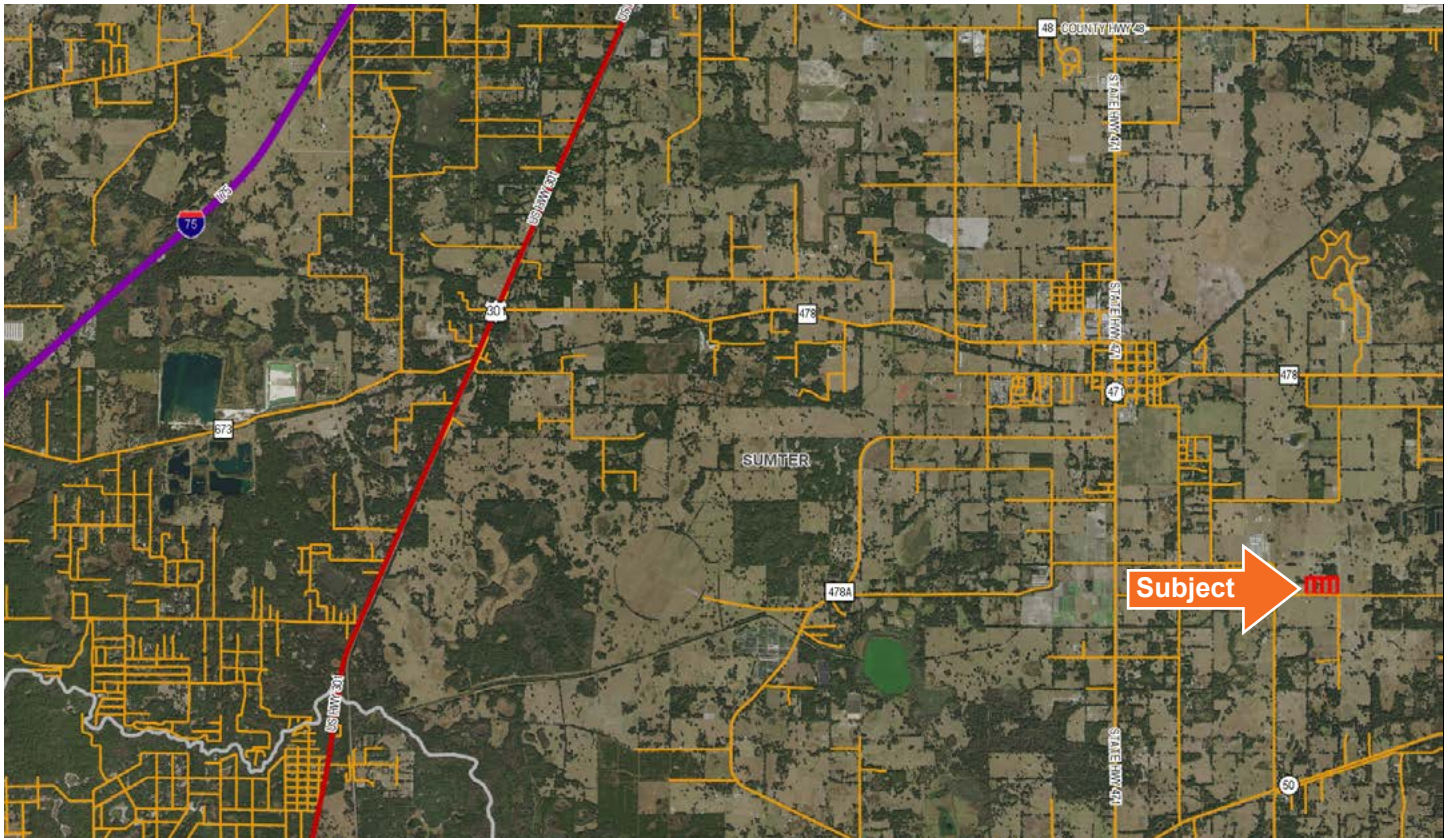
Current Use: Cattle Ranch

Sumter County Ranchettes are a great example of country living at its finest. Native pasture coupled with scattered oak trees make for a perfect small Ranch/Rec set up for a future home site and small agriculture operation. This property is uniquely offered as 20 acres, or as individual 10 acre tracts. The property is located approximately one mile north of highway 50 and 1.5 miles east of highway 471 - a short 5 minute drive to the city limits of Webster. This region of Florida is well known for its peaceful rural living, all the while being under an hour away from some of Florida's most prominent cities and attractions - such as Tampa, Orlando, and Walt Disney World. Reach out to Listing Agent Keat Waldron for more details!

2020 Taxes: \$32.93 (These are the taxes for the entire 20 acres)

Fencing: Partially Perimeter Fenced

General Points of Interest: 1 hour from Tampa and Orlando, 40 minutes South of the Villages, and only 50 minutes from Lakeland.











1723 Bartow Rd | Lakeland, Florida 33801

20 ± AC • Offered as 20 AC, or as individual 10 AC tracts

5 minute drive to the city limits of Webster

Perfect small Ranch or Recreational set up for a future home site

Visit SVNsaunders.com and search for: **Sumter County**

Keat Waldron, 863.225.1231 | keat.waldron@svn.com



HEADQUARTERS

1723 Bartow Rd
Lakeland, Florida 33801
863.648.1528

NORTH FLORIDA

356 NW Lake City Ave
Lake City, Florida 32055
386.438.5896

GEORGIA

125 N Broad Street, Suite 210
Thomasville, Georgia 31792
229.299.8600

©2021 SVN | Saunders Ralston Dantzler Real Estate.
All SVN® Offices Independently Owned and Operated

SVN | Saunders Ralston Dantzler Real Estate is a full-service land and commercial real estate brokerage with over \$3 billion in transactions representing buyers, sellers, investors, institutions, and landowners since 1996. We are recognized nationally as an authority on all types of land, including agriculture, ranch, recreation, residential development, and international properties. Our commercial real estate services include marketing, property management, leasing and tenant representation, valuation, business brokerage, and advisory and counseling services for office, retail, industrial, and multi-family properties. Our firm also features an auction company, forestry division, international partnerships, hunting lease management, and extensive expertise in conservation easements. Located at the center of Florida's I-4 corridor, we provide proven leadership and collaborative expertise backed by the strength of the SVN® global platform. To learn more, visit SVNsaunders.com.



030821-A