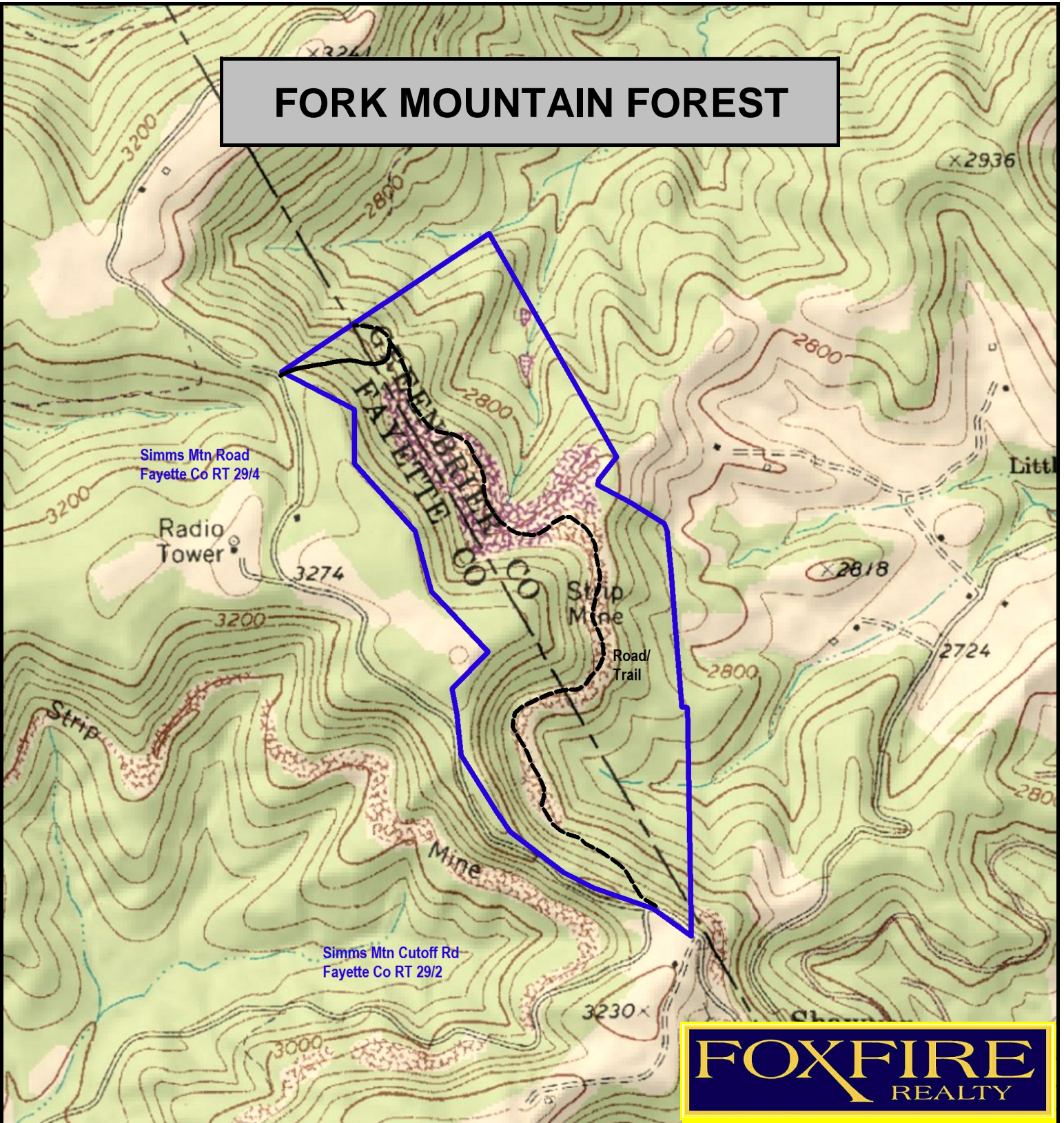
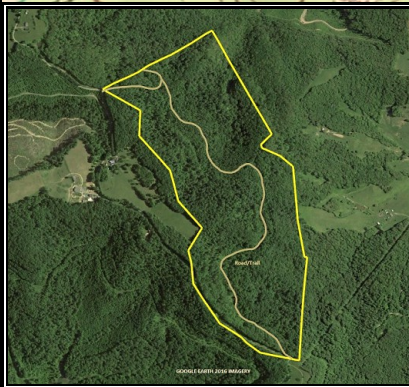


# FORK MOUNTAIN FOREST



Simms Mtn Cutoff Rd  
Fayette Co RT 29/2

**FOXFIRE**  
REALTY



FORK MOUNTAIN FOREST, Fayette & Greenbrier Counties, WV  
(topographic map)  
Elevation Range: 2670' - 3299' +/-; Google Coordinates:  
LAT 37.890641 (N), LON -80.768693 (W)  
This map is for general location purposes only. Consult a licensed land  
surveyor for actual boundary location and acreage.

RICHARD GRIST, Broker - Auctioneer - Forester  
304.646.8837 Richard@Foxfirenation.com  
[WWW.FOXFIRENATION.COM](http://WWW.FOXFIRENATION.COM)

FOR TOPO MAP

SCALE 1:12000

1 INCH = 1,000 FT.

