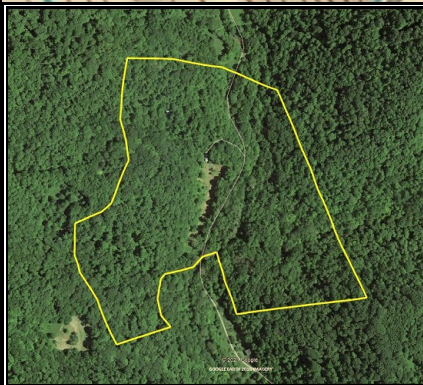
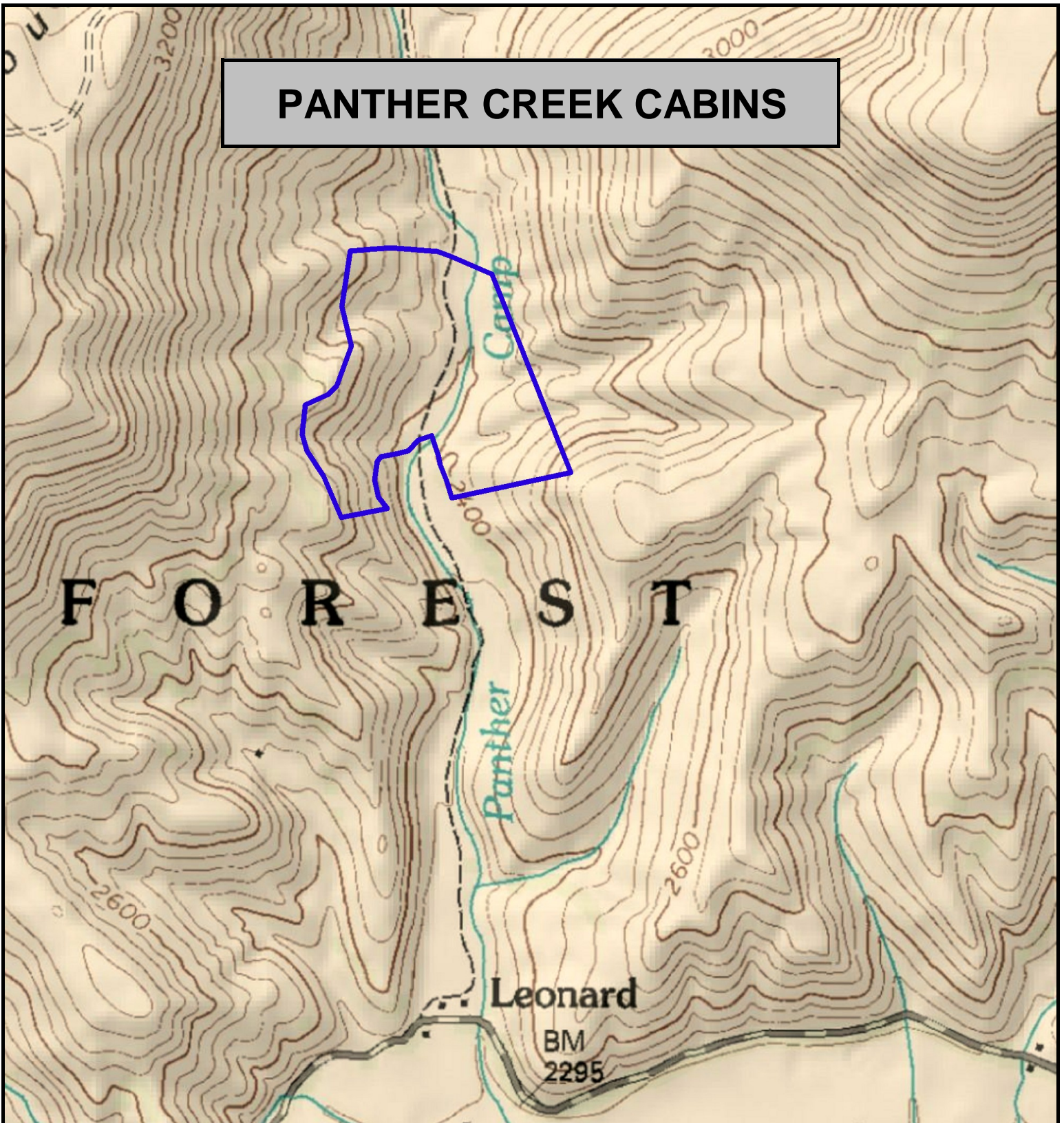


PANTHER CREEK CABINS



Panther Creek Cabins, Greenbrier County, WV (topographic map)
Elevation Range: 2400' - 2700' +/-; Google Coordinates: LAT 38.0929389 (N), LON -80.4033295 (W)
This map is for general location purposes only. Consult a licensed land surveyor for actual boundary location and acreage.

FOR TOPO MAP

SCALE 1:9600

1 INCH = 800 FT.

