



**T R O P H Y**  
PROPERTIES AND AUCTION  
LAND | RECREATIONAL | RESIDENTIAL

# Incline Village—31408 Sugar Maple Ct Positively Sells to Highest Bidder!

[www.TrophyPA.com](http://www.TrophyPA.com) • (855) 573-5263 • [leads@trophypa.com](mailto:leads@trophypa.com)

BIDDING ENDS WEDNESDAY, MAY 12TH AT 10:00 AM  
SEE FULL TERMS & CONDITIONS AT [WWW.TROPHYPA.COM](http://WWW.TROPHYPA.COM)



**PROPERTY ADDRESS:**  
31408 Sugar Maple Ct.  
Foristell, MO 63348

**ACRES:** .56  
**COUNTY:** Warren

## PROPERTY DESCRIPTION:

**Positively Sells to the Highest Bidder – Opening Bid \$5,000.00**

**Bidding ends Wednesday May 12, 2021 at 10:00 AM. Bid now at [TrophyPA.com](http://TrophyPA.com).**

Wooded .56-acre lot with lake view in the resort community of Incline Village. Amenities include swimming, boating, fishing, pool, clubhouse and an 18-hole golf course on site! Build your dream home, or just enjoy all the amenities this community has to offer!



**PRESENTED BY:**

**ERIC MERCHANT**

**Real Estate Consultant**

M: (314) 541-1218

P: (855) 573-5263 x730

E: [Emerchang@trophypa.com](mailto:Emerchang@trophypa.com)

**Trophy Properties and Auction**

15480 Clayton Road

Suite 101

Ballwin, MO 63011

[www.Trophypa.com](http://www.Trophypa.com)

[leads@trophypa.com](mailto:leads@trophypa.com)

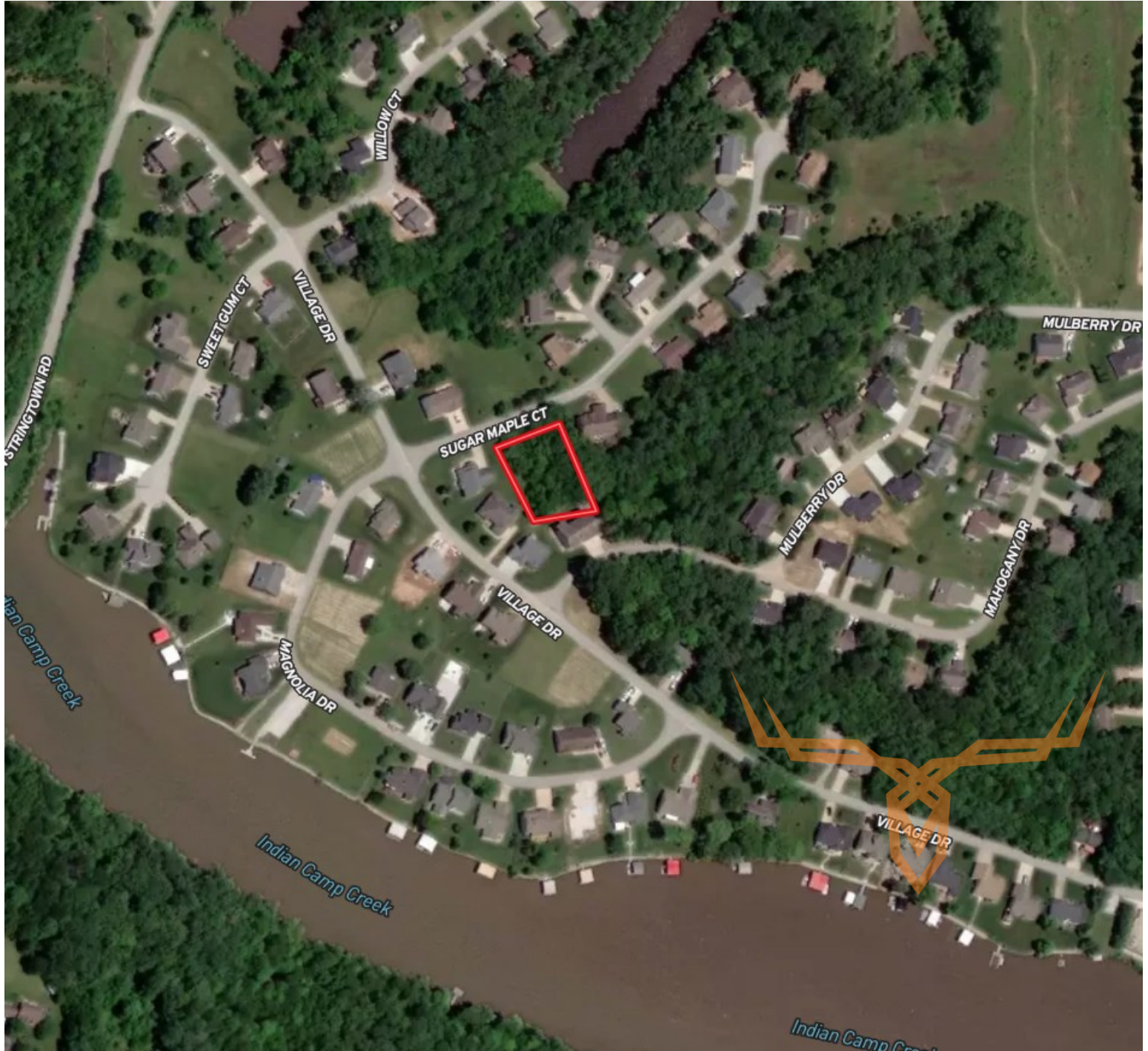




**T R O P H Y**  
PROPERTIES AND AUCTION  
LAND | RECREATIONAL | RESIDENTIAL

# Incline Village—31408 Sugar Maple Ct Positively Sells to Highest Bidder!

[www.TrophyPA.com](http://www.TrophyPA.com) • (855) 573-5263 • [leads@trophy.com](mailto:leads@trophy.com)



The information is believed to be accurate; however, no liability for its accuracy, errors or omissions is assumed. All lines are drawn on maps, photographs, etc. are approximate. Buyers should verify the information to their satisfaction. There are no expressed or implied warranties pertaining to this property. Both real estate (including all improvements, if any) is being sold As Is, Where Is with NO warranties expressed or implied. Please make all inspections and have financing arranged prior to the end of bidding.