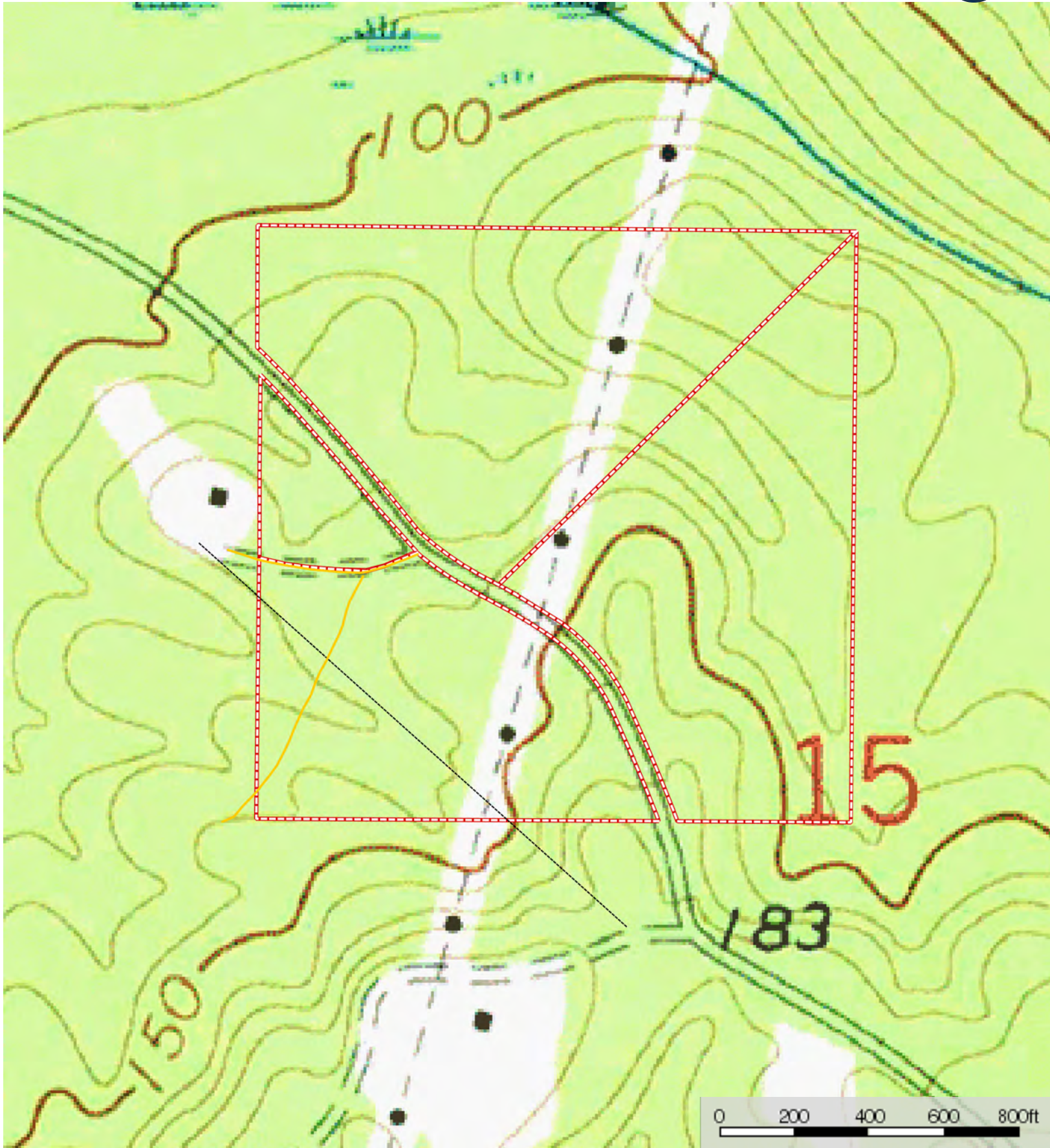




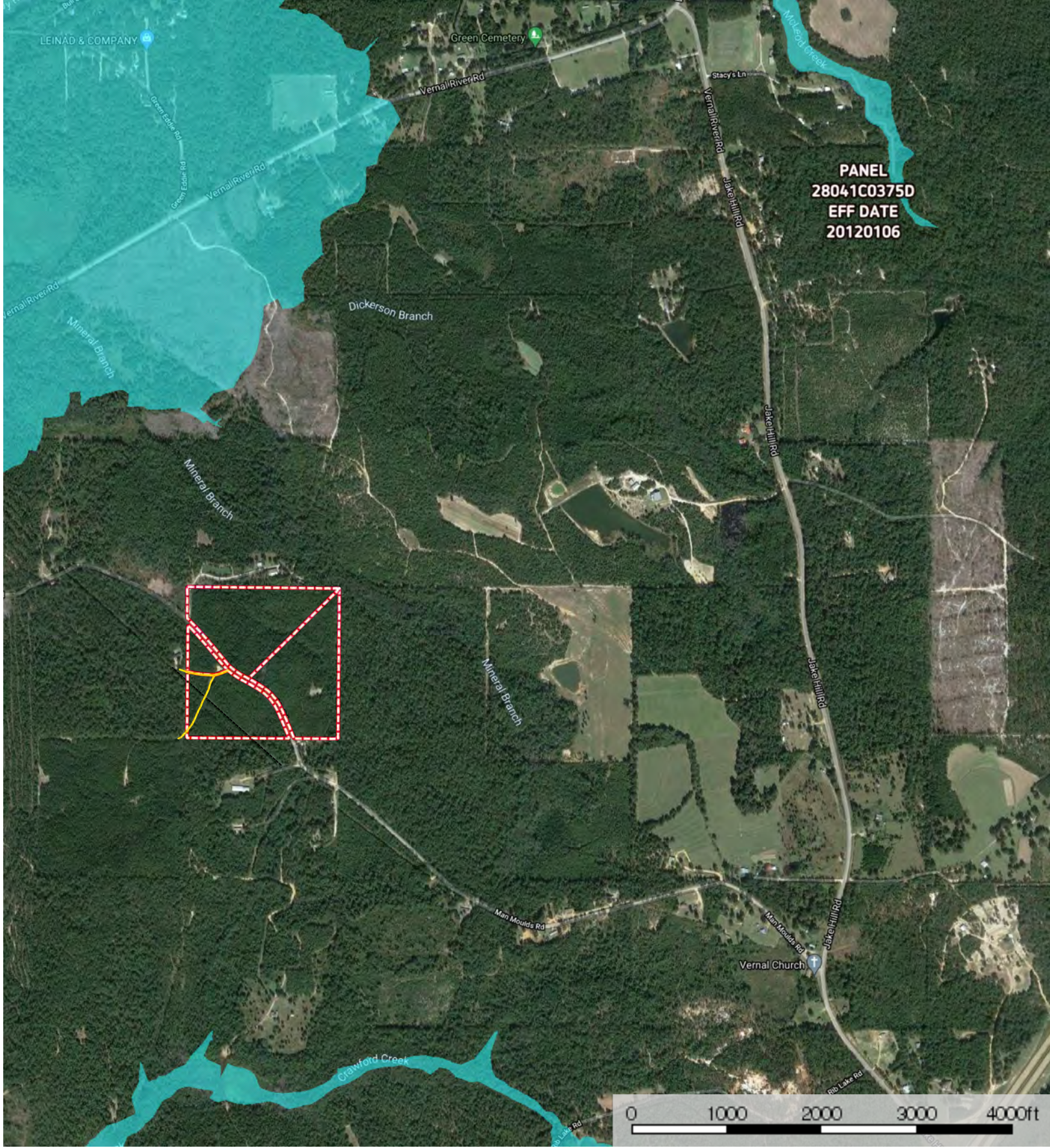
Gravel Rd (easement)    Transmission Line    Boundary





Gravel Rd (easement)      Transmission Line      Boundary





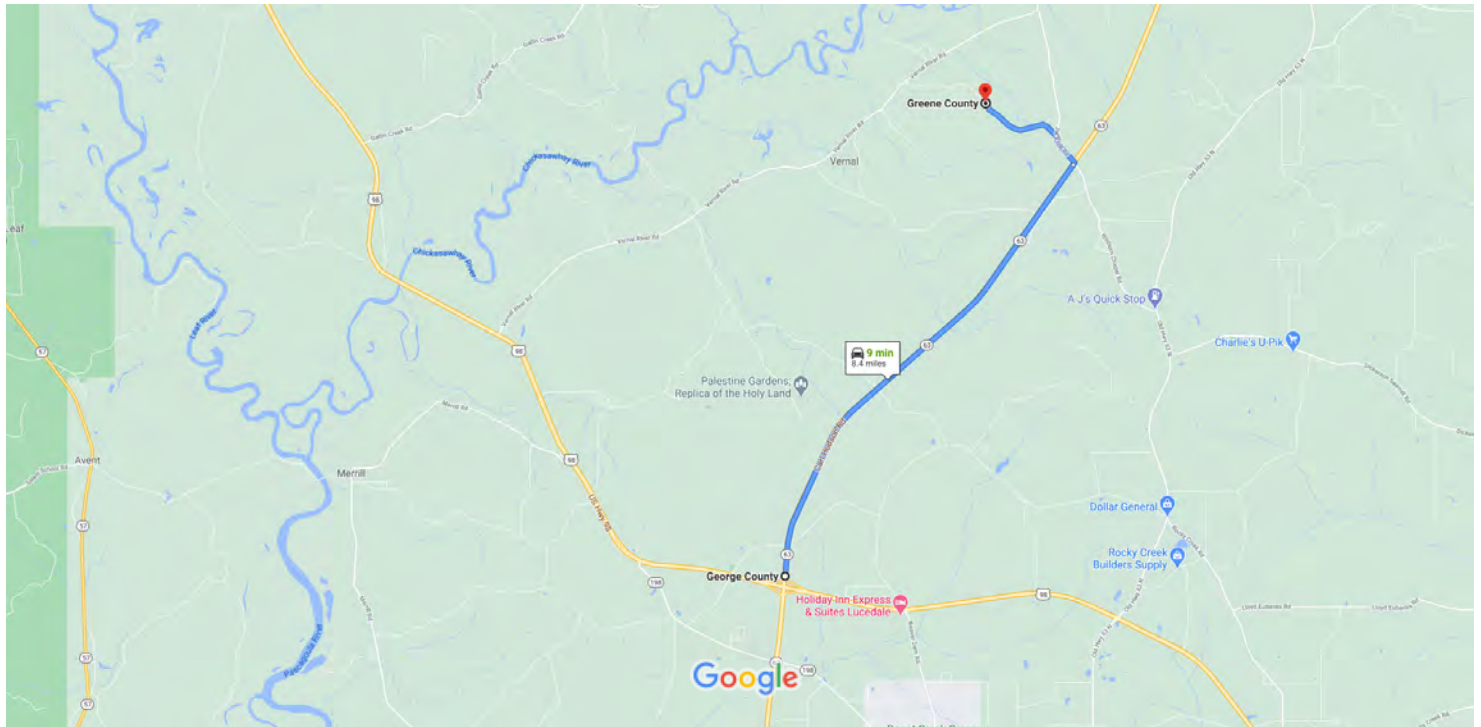
- Gravel Rd (easement)
- Transmission Line
- Boundary
- 100 Year Floodplain
- 500 Year Floodplain
- Floodway
- Special
- Unmapped/Not Included





George County, Mississippi to Greene County, Mississippi

Drive 8.4 miles, 9 min



Map data ©2021 1 mi

## George County

Mississippi

- ↑ 1. Head north on MS-63 N  
6.8 mi
  - ↩ 2. Turn left onto Jake Hill Rd  
0.5 mi
  - ↩ 3. Turn left onto Man Moulds Rd  
1.1 mi
- Destination will be on the left*

## Greene County

Mississippi

These directions are for planning purposes only. You may find that construction projects, traffic, weather, or other events may cause conditions to differ from the map results, and you should plan your route accordingly. You must obey all signs or notices regarding your route.

Lat/Long: 31.0496, -88.5794

Google Maps: <https://goo.gl/maps/qEfaiqeAW9omXd9c9>

Drive-to-Directions: (from the intersection of Hwy 98 and Hwy 63 in Lucedale, MS)

Travel north on Hwy 63 for 6.8 miles. Turn left on to Jake Hill Rd.; continue 0.5 miles. Turn left on Man Moulds Rd; proceed 1 mile. Subject property will be on both sides of the road.