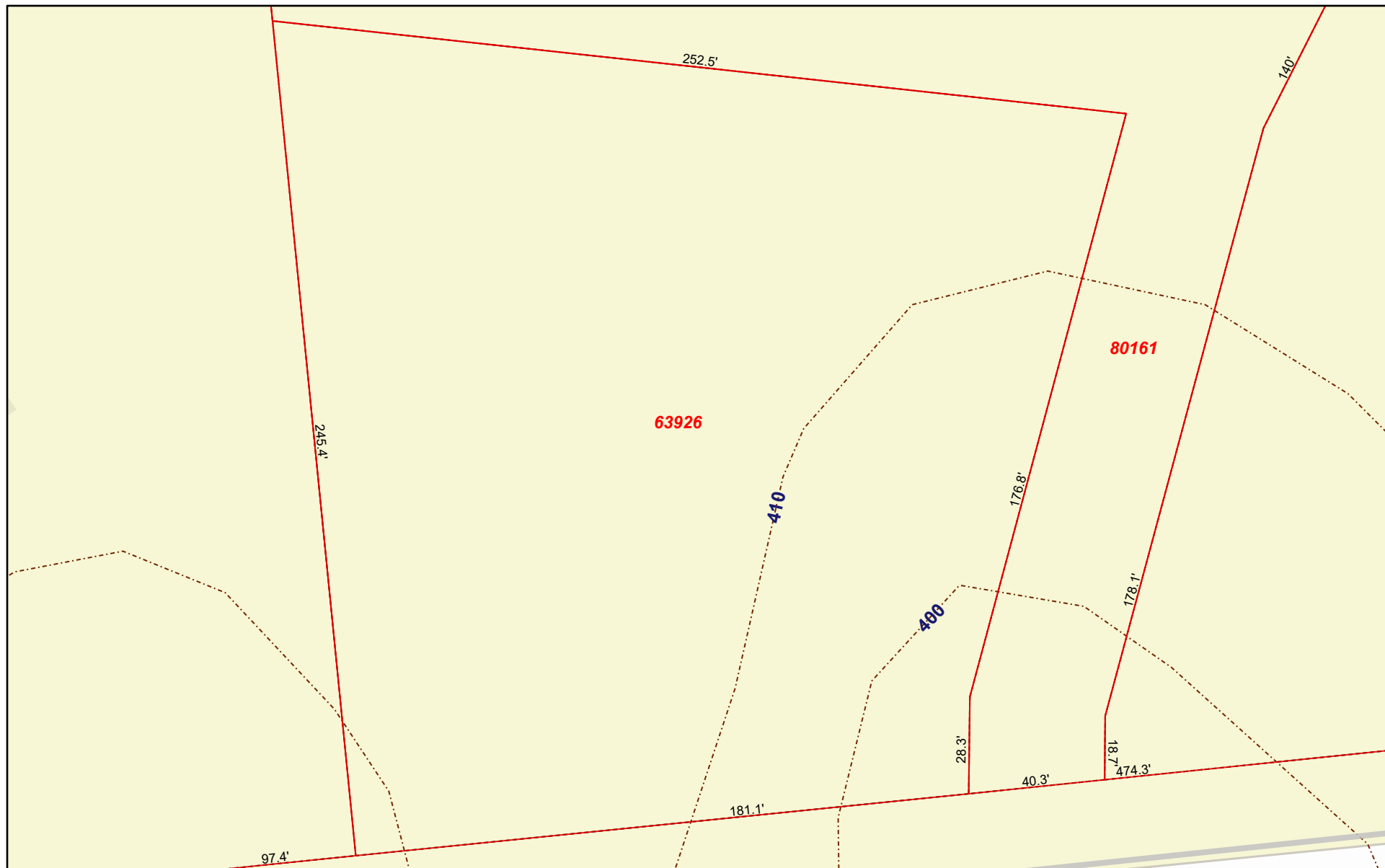


Parcel 63926 - Lot Measurements & Topography - Bastrop CAD Web Map



4/24/2021, 2:44:50 PM

Abstracts Lot Lines Topographic Lines
Parcels Bastrop Roads

1:564
0 0 0.01 0.02 mi
0 0.01 0.01 0.02 km

Esri Community Maps Contributors, City of Austin, Texas Parks & Wildlife,

Bastrop County Appraisal District, BIS Consulting - www.bisconsulting.com

Disclaimer: This product is for informational purposes only and has not been prepared for or be suitable for legal, engineering, or surveying purposes. It does not represent an on-the-ground survey and represents only the approximate relative location of boundaries.