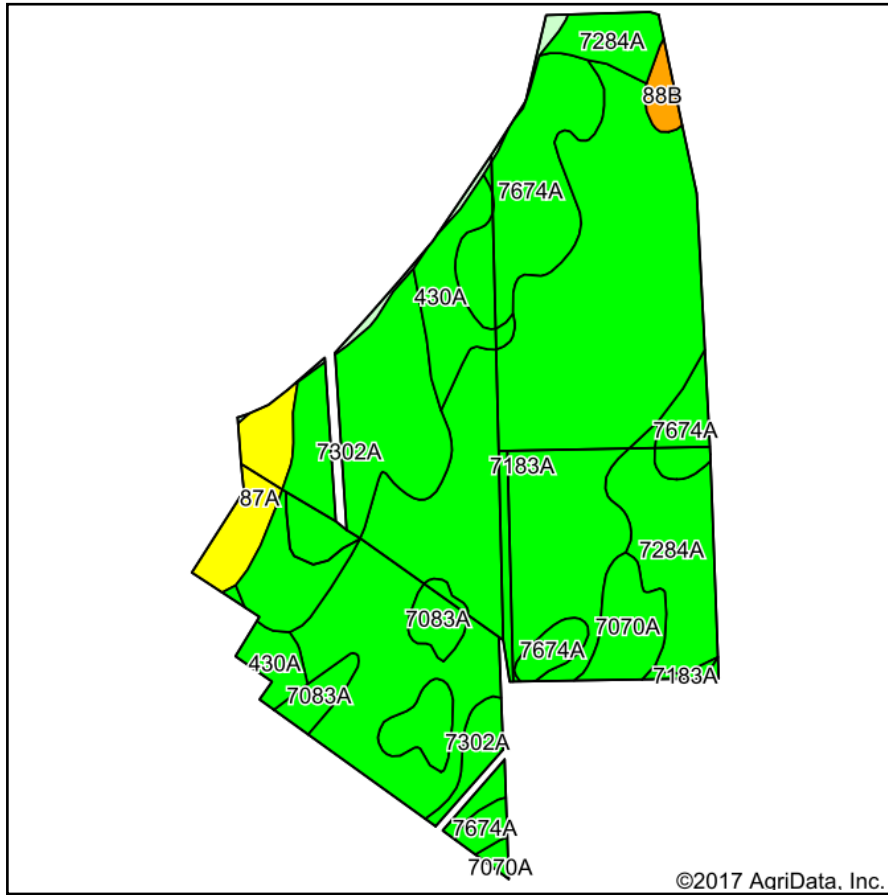
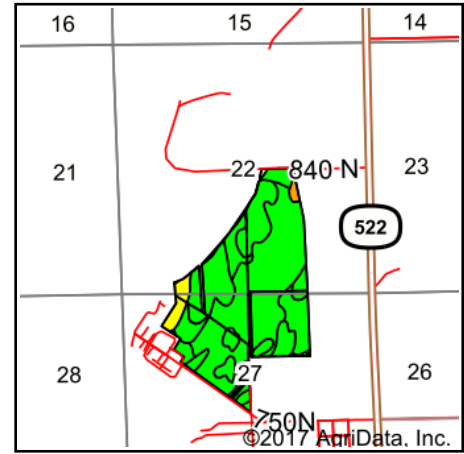


Soils Map - Tillable Acres Per Henderson Co., FSA



Soils data provided by USDA and NRCS.



State: **Illinois**
 County: **Henderson**
 Location: **22-9N-6W**
 Township: **Carman**
 Acres: **203.67**
 Date: **10/5/2017**



Maps Provided By:



© AgriData, Inc. 2017

www.AgriDataInc.com



Area Symbol: IL071, Soil Area Version: 17

Code	Soil Description	Acres	Percent of field	II. State Productivity Index Legend	Corn Bu/A	Soybeans Bu/A	Wheat Bu/A	Oats Bu/A ^b	Alfalfa ^d hay, T/A	Crop productivity index for optimum management
7183A	Shaffton loam, 0 to 2 percent slopes, rarely flooded	97.80	48.0%		155	51	60	80	0.00	116
7302A	Ambraw clay loam, 0 to 2 percent slopes, rarely flooded	30.73	15.1%		154	50	61	75	0.00	114
7674A	Dozaville silt loam, 0 to 2 percent slopes, rarely flooded	23.69	11.6%		185	58	71	0	6.53	137
7284A	Tice silt loam, 0 to 2 percent slopes, rarely flooded	16.95	8.3%		184	57	70	95	0.00	134
430A	Raddle silt loam, 0 to 2 percent slopes	9.84	4.8%		189	59	73	97	6.52	138
7083A	Wabash silty clay, 0 to 2 percent slopes, rarely flooded	8.12	4.0%		157	51	61	74	0.00	116
87A	Dickinson sandy loam, 0 to 2 percent slopes	7.17	3.5%		142	46	56	74	3.39	104
7070A	Beaucoup silty clay loam, 0 to 2 percent slopes, rarely flooded	6.26	3.1%		176	58	69	90	0.00	132
**88B	Sparta loamy sand, Illinois till plain, 2 to 6 percent slopes	1.64	0.8%		**118	**41	**50	**57	0.00	**91
3646L	Fluvaquents, 0 to 2 percent slopes, frequently flooded, long duration	1.47	0.7%						.00	
Weighted Average					161.2	52.1	62.5	71.1	1.19	119.7

Table: Optimum Crop Productivity Ratings for Illinois Soil by K.R. Olson and J.M. Lang, Office of Research, ACES, University of Illinois at Champaign-Urbana. Version: 1/2/2012 Amended Table S2 B811

Crop yields and productivity indices for optimum management (B811) are maintained at the following NRES web site:
<https://www.ideals.illinois.edu/handle/2142/1027/>

** Indexes adjusted for slope and erosion according to Bulletin 811 Table S3

^b Soils in the southern region were not rated for oats and are shown with a zero "0".

^d Soils in the poorly drained group were not rated for alfalfa and are shown with a zero "0".

Soils data provided by USDA and NRCS. Soils data provided by University of Illinois at Champaign-Urbana.

*c: Using Capabilities Class Dominant Condition Aggregation Method