



**T R O P H Y**  
PROPERTIES AND AUCTION  
LAND | RECREATIONAL | RESIDENTIAL

# Small Pole Barn/Metal Home for Sale on 1.56 Acre Country Setting - Jasper County

www.TrophyPA.com • (855) 573-5263 • leads@trophyapa.com

**PRICE IMPROVED**



## PROPERTY ADDRESS:

7399 N County Road 800 E  
Newton, IL 62448

**PRICE:** \$159,500

**ACRES:** 1.56

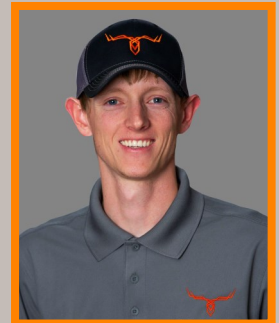
**COUNTY:** Jasper

## PROPERTY HIGHLIGHTS:

- 1.56 Surveyed Acres
- 1,600 Sq Foot Livable Area with 800 Sq Ft Garage/Shop
- 1 bed/2 bath
- 2x6 Construction
- Radiant Heat Flooring
- One mile east of Lake CIPS
- Peaceful setting with beautiful views

## PROPERTY DESCRIPTION:

Small acreage rural homes are hard to come across in Jasper County. This metal pole barn home was built in 2019 and sits on 1.56 surveyed acres. Inside you will find 1 bed, 2 baths, a laundry room, and an open kitchen and living area. The bedroom joins a large bathroom with a big walk-in closet. This home is constructed with 2x6 studs, has radiant heat concrete floors, and 12 foot ceilings! The interior walls have not been finished which gives the new homeowners unlimited possibilities to finish this home the EXACT way they want. This place is perfect for anyone who loves a peaceful country setting with beautiful backyard views! With a large backyard, you can have the garden of your dreams or even a food plot. And just one mile west of Lake CIPS, this property would be ideal for outdoorsmen/hunters as well. With a large garage/shop area and a lean-to, you can store and keep all kinds of equipment/machinery at this property.



**PRESENTED BY:**

**CODY HINTERSCHER**

**Land Specialist - IL**

M: (217) 663-2708

P: (855) 573-5263 x713

E: chinterscher@trophyapa.com

**Trophy Properties and Auction**

15480 Clayton Road

Suite 101

Ballwin, MO 63011

www.Trophyapa.com

leads@trophyapa.com

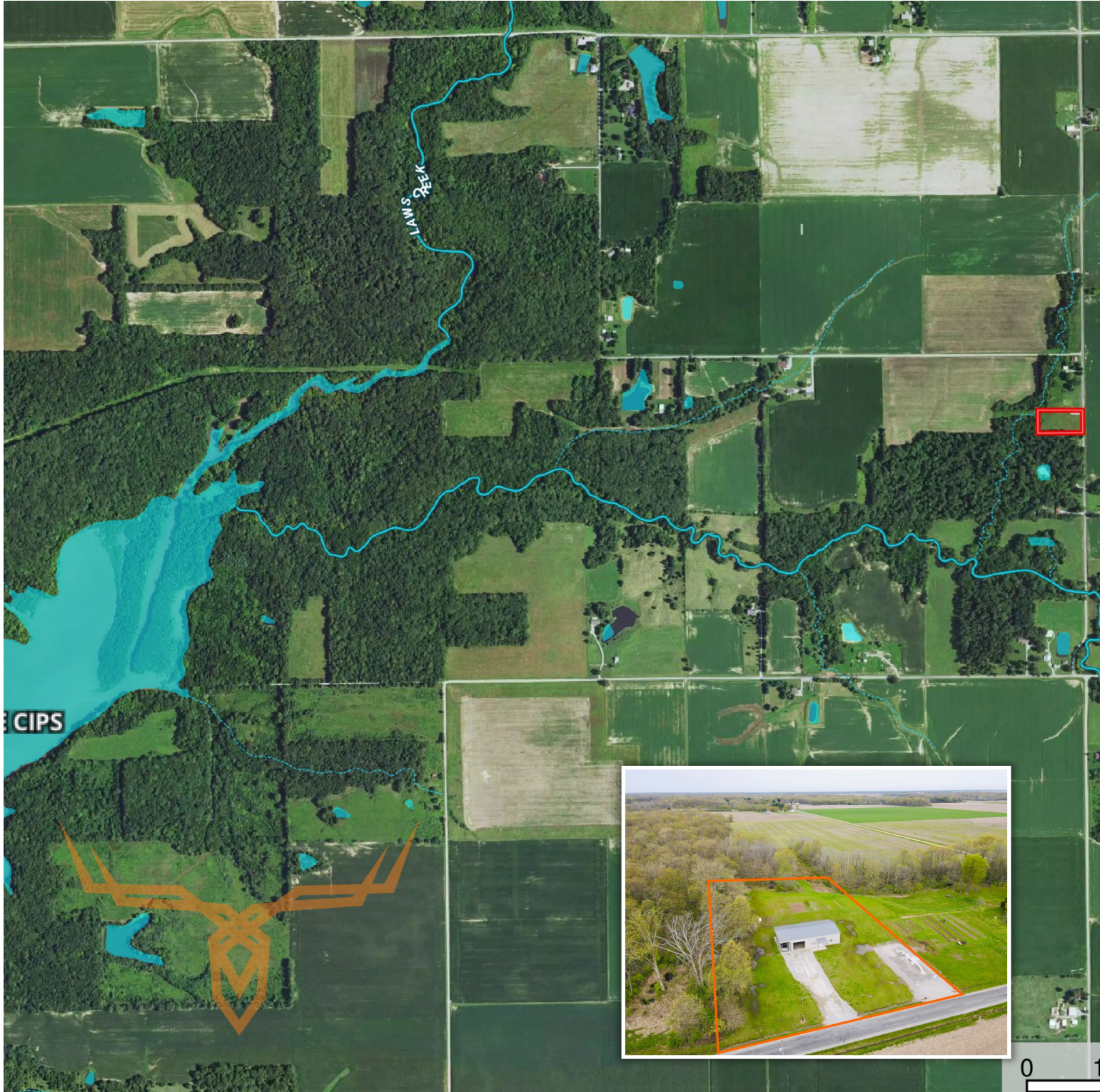




**T R O P H Y**  
PROPERTIES AND AUCTION  
LAND | RECREATIONAL | RESIDENTIAL

# Small Pole Barn/Metal Home for Sale on 1.56 Acre Country Setting - Jasper County

[www.TrophyPA.com](http://www.TrophyPA.com) • (855) 573-5263 • [leads@trophy.com](mailto:leads@trophy.com)



Broker does not guarantee the accuracy of sq. ft., lot size, or other information, buyer is advised to independently verify the accuracy of information through personal inspection and with appropriate professionals