



**Sartain's Heritage**  
Properties, LLC.  
[www.sartainsheritage.com](http://www.sartainsheritage.com)

***Farm, Timber & Recreational Land Brokers***

*106 First Choice Dr Madison, Ms 39110*

[www.SartainsHeritage.com](http://www.SartainsHeritage.com)

**Property:** Millers Pond, located southwest of Drew Mississippi. This natural slough takes you back to the old school of Delta mallard hunting. Being a shallow bottom slough that dries up to a mud flat during the summer month allowing for natural grasses to germinate. Then, in winter months, taking runoff from the surrounding Ag fields. The slough is bordered with willows and buck brush creating hunting opportunities for all wind directions. Typically, the slough floods knee to waist deep and is perfect for wading and easy decoy setups. Millers Pond, is a classic mid-morning mallard hole catching those transitioning birds moving from larger roost and feed locations.

**Acres:** 35 +/- ac

**Access:** Radio Station road, public road

**Price:** \$104,000.00

**Taxes:** \$120.00 (2021)

**Property Video Link:** <https://www.youtube.com/watch?v=6VXBiJ66YxE>

**Contact:** Jacob Sartain 662-836-6048 or [jsartain@sartainsheritage.com](mailto:jsartain@sartainsheritage.com)







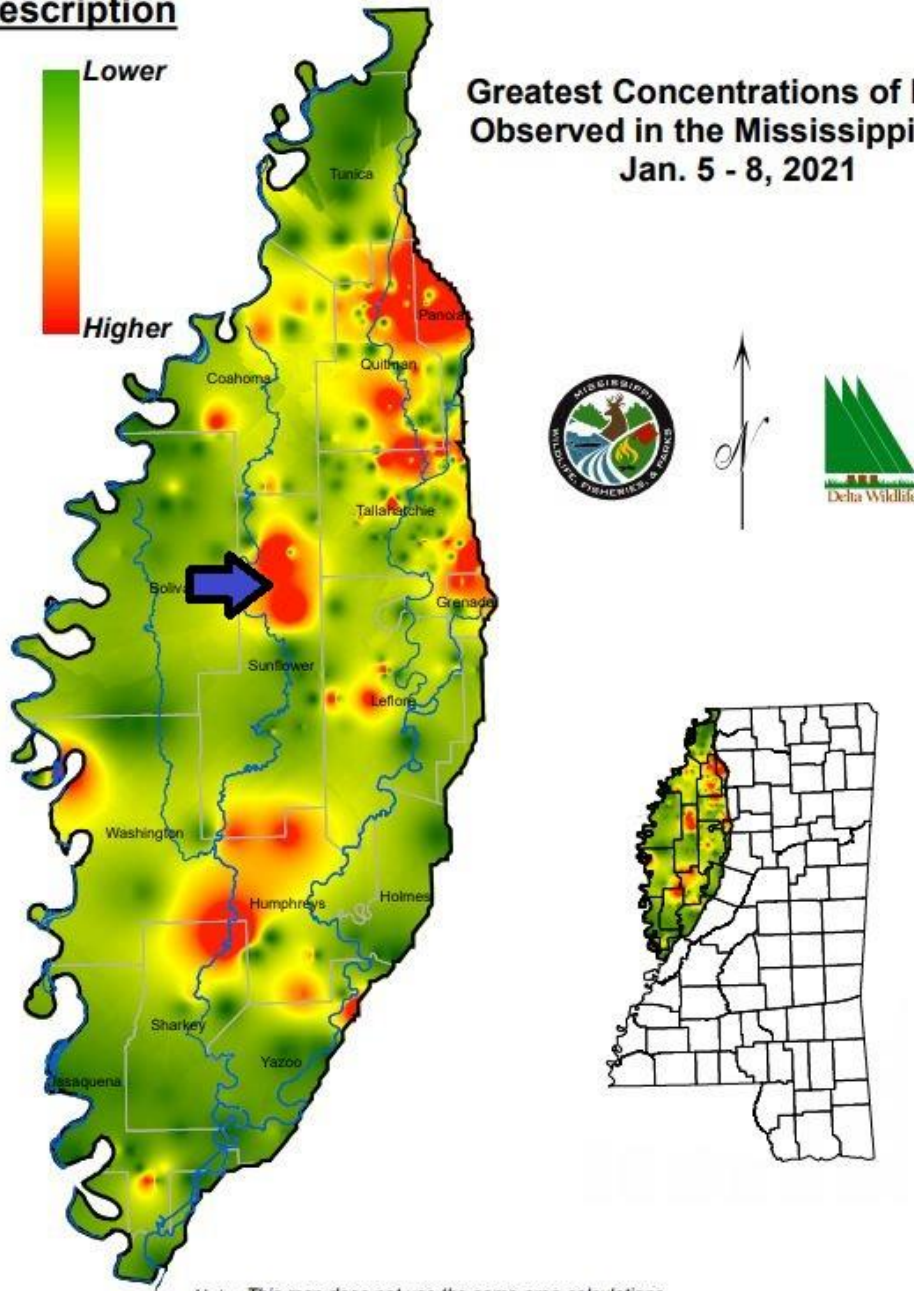




## Description



## Greatest Concentrations of Ducks Observed in the Mississippi Delta Jan. 5 - 8, 2021



*Note: This map does not use the same area calculations  
as previously published maps and is intended to illustrate  
major concentrations of ducks in the Mississippi Delta.*

Prepared by MDWFP  
GIS Lab 14 Jan. 2020