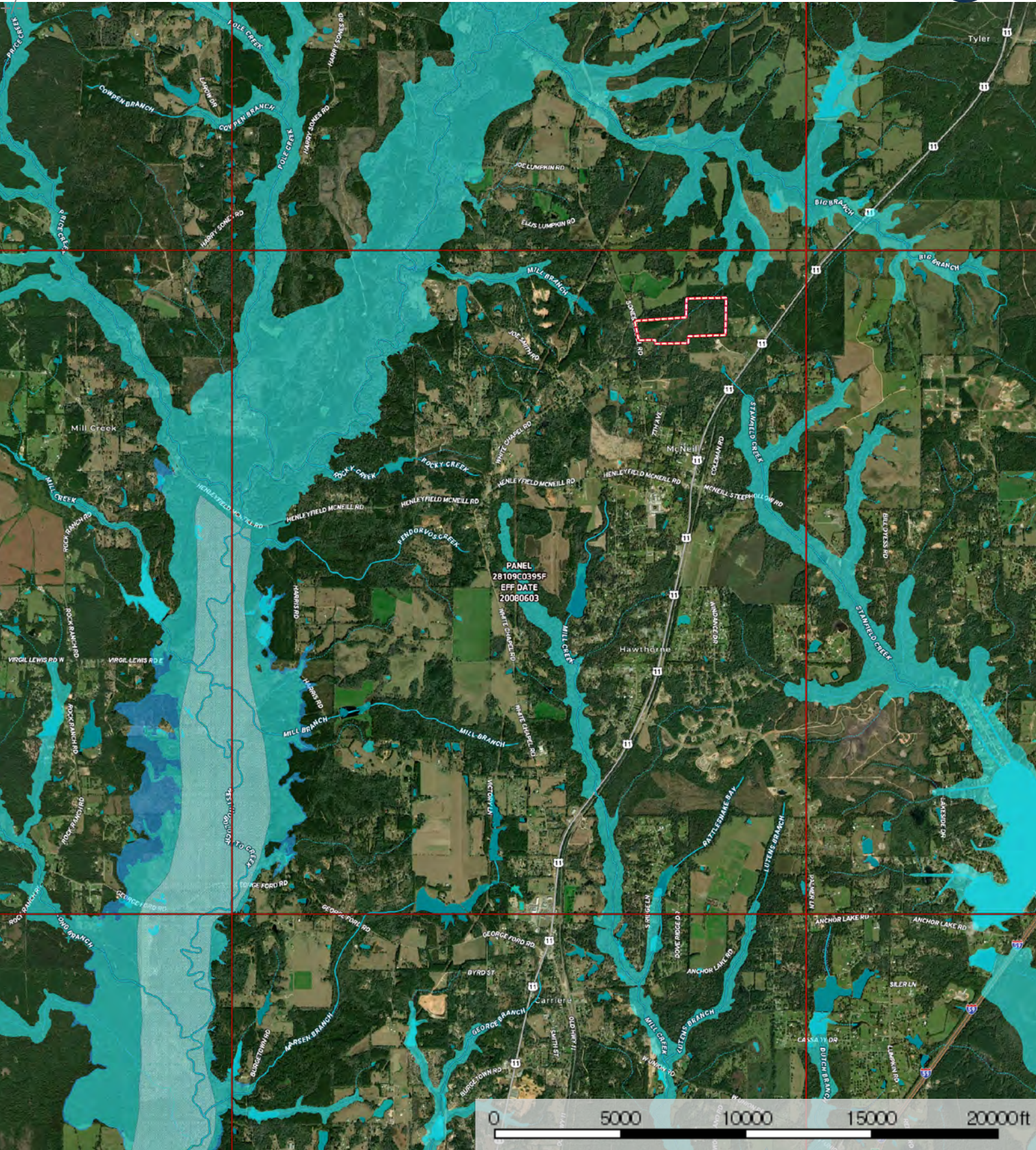


Boundary Stream, Intermittent River/Creek Water Body

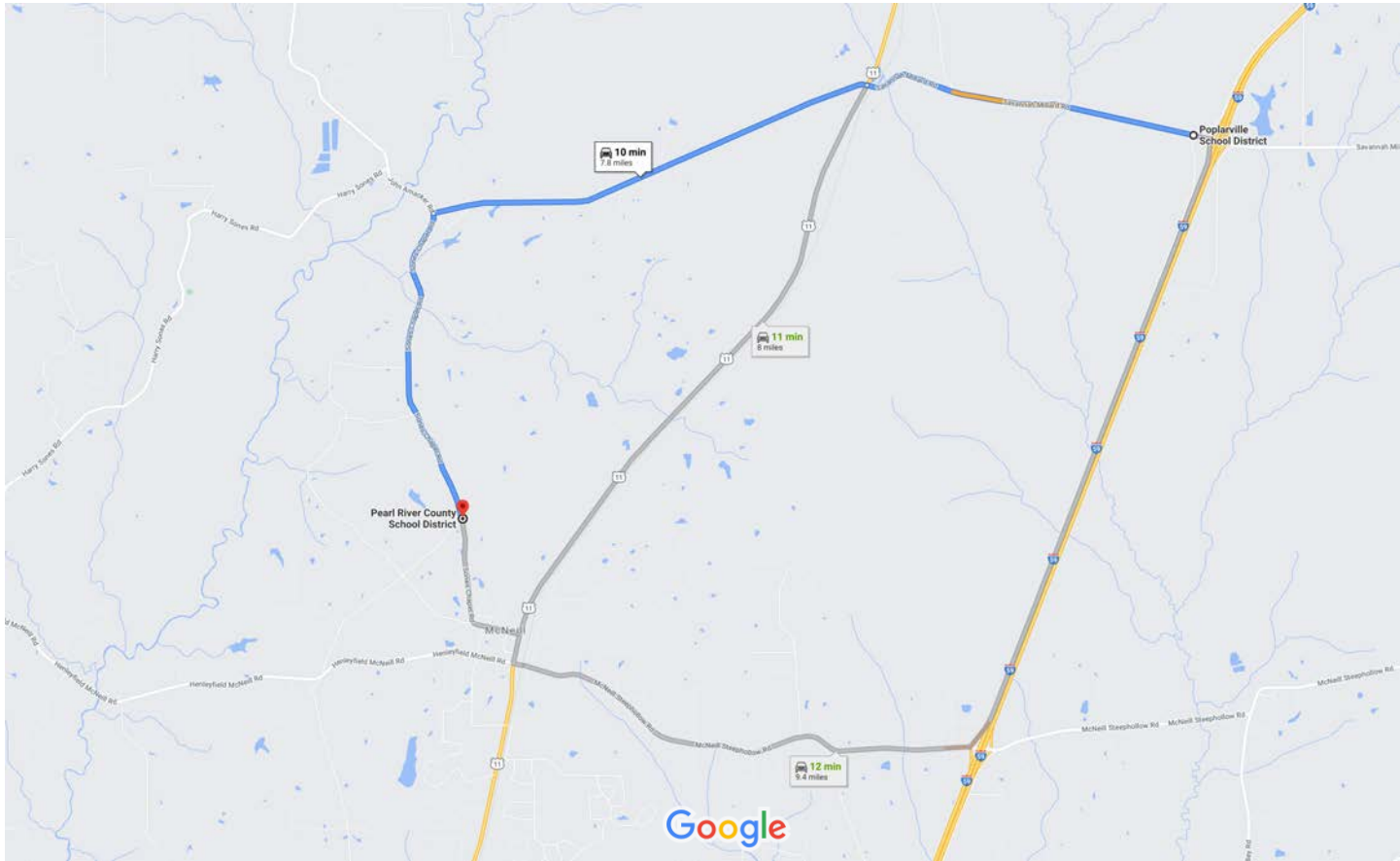


- Boundary
- 100 Year Floodplain
- 500 Year Floodplain
- Floodway
- Special
- Unmapped/ Not Included
- Stream, Intermittent
- River/Creek
- Water Body

Google Maps

Poplarville School District, Mississippi to Pearl River County School District, Mississippi

Drive 7.8 miles, 10 min



76 +/- ACRES
PEARL RIVER COUNTY, MS

Map data ©2021 2000 ft

From I-59, Exit 19 / Savannah Millard Rd

30.6801, -89.6434

- ↑

1. Head west on Savannah Millard Rd toward Langnecker Rd

2.4 mi
- ↑

2. Continue onto Sones Chapel Rd

3.2 mi
- ↩

3. Turn left to stay on Sones Chapel Rd

i

 Destination will be on the left

2.3 mi

Google Map Link
<https://goo.gl/maps/2VD1PqjrCsUgJ8b5A>

Pearl River County School District
Mississippi

These directions are for planning purposes only. You may find that construction projects, traffic, weather, or other events may cause conditions to differ from the map results, and you should plan your route accordingly. You must obey all signs or notices regarding your route.

