



## We Sell Big Lake!

*Setting the trend for how Real Estate is sold in the Midwest.*

**www.BarnesRealty.com**

18156 Hwy 59  
Mound City, MO 64470  
(660) 442-3177

1711 Oregon  
Hiawatha, KS 66434  
(785) 742-4580

1708 Prairie View Rd, Suite B  
Platte City, MO 64079  
(816) 219-3010

### ***#15 Lot 11 Danbury Addition, Big Lake, MO***



**This fantastic OVERSIZED vacant lot with seawall & superb lake location! Providing approximately 85' of lake frontage, you are getting the space of two lots for the price of one!!  
WHAT A DEAL & great spot to build someday!**

**Price:** \$49,000.00

**Lot Size:** Approx. 45' x 145'

**Taxes:** 2020 taxes were \$140.46

#### **LISTING AGENT:**

Alyssa Barnes (660) 851-1171 or [alyssa@barnesrealty.com](mailto:alyssa@barnesrealty.com)

*Setting the trend for how Real Estate is sold in the Midwest.*

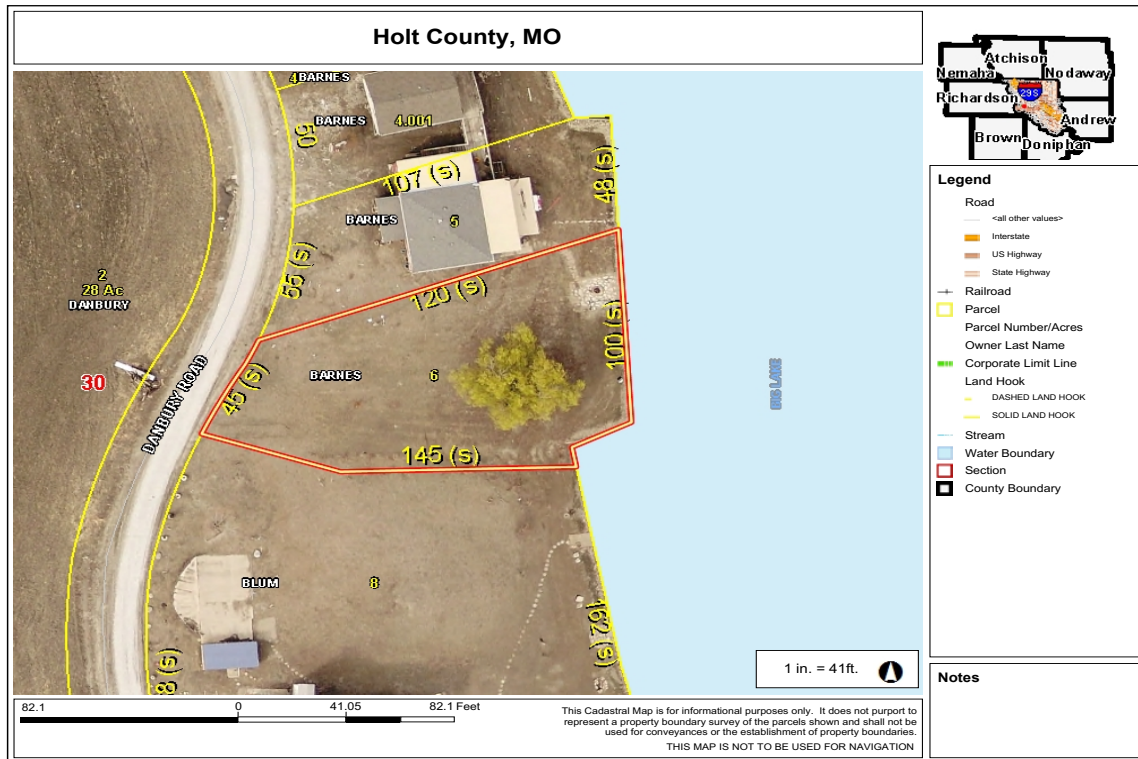
This information is thought to be accurate; however, it is subject to verification and no liability for error and omissions is assumed. Barnes Realty has made every effort to present accurate information on the property presented. Most of the information comes from outside sources: County/Government/Seller and human error can occur. It's the Buyer's responsibility to satisfy himself with the information presented and to determine the information to be true and accurate and the property to be suited for his intended use. The listing may be withdrawn with or without approval. The Seller further reserves the right to reject any and all offers.

All inquiries, inspections, appointments, and offers must be sent through:

**RICK BARNES, BROKER, BARNES REALTY, 18156 HWY 59, MOUND CITY, MO 64470 PHONE NUMBER: 660-442-3177.**

# #13 Lot 10 Danbury Addition, Big Lake, MO

## Tax Map



## Google Aerial Map





***#13 Lot 10 Danbury Addition, Big Lake, MO***  
***Photos***

