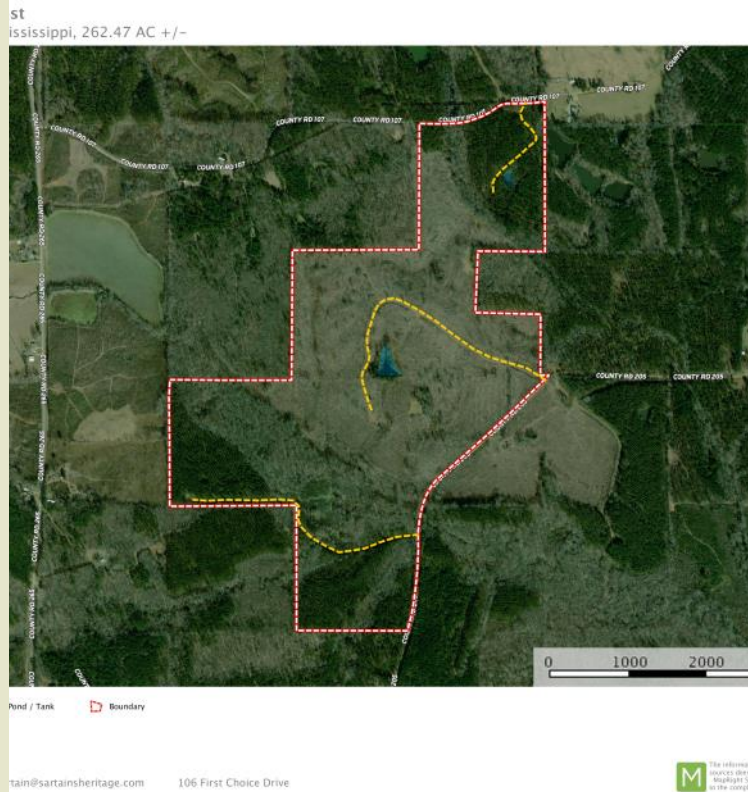


# Spring Creek West

## 262.47 Acres +/-

### Webster County, MS



#### Spring Creek 262.47 West

262.47 acres in Sections 23 and 26, T21N, R10E, Webster County, MS, 10 miles north of Eupora. The property has approximately 3200 feet of frontage on County Road 205 (Buster Vaughn Road) along the east boundary and frontage on County Road 107 (Porter White Road) along the northern boundary.

The timber consists of 136 acres of one year replanted pines with the balance in older age pines and hardwood Streamside Management Zones along Spring Creek and drainages creating wildlife travel corridors through the property for deer hunting and turkey hunting. Utilities are available on the north end of the property along CR 107. There are small two ponds, and a good interior road system. An additional 103 acres is available on the east side of County Road 205.

Being located only 26 miles west of Starkville, this a great recreational tract close to MSU sporting events and dining at the numerous restaurants in town.

**\$1,850 per acre/ \$485,570**

**CONTACT:**  
**J. PARKER SARTAIN**  
**601.506.2398**  
[psartain@sartainsheritage.com](mailto:psartain@sartainsheritage.com)

Sartain's Heritage Properties  
 106 First Choice Drive  
 Madison, MS 39110  
 Phone: 601-856-2720  
 Fax: 601-853-6765  
[www.SartainsHeritage.com](http://www.SartainsHeritage.com)







