

Lookout Tower Road

Ridgeway, South Carolina



Tombo Milliken

803.206.8384
tombo.milliken@naicolumbia.com



Tom Milliken

803.331.6999
tmilliken@naicolumbia.com



Nelson Weston, III

803.678.7346
nweston@naicolumbia.com

Lookout Tower Road

Ridgeway, South Carolina

For Sale

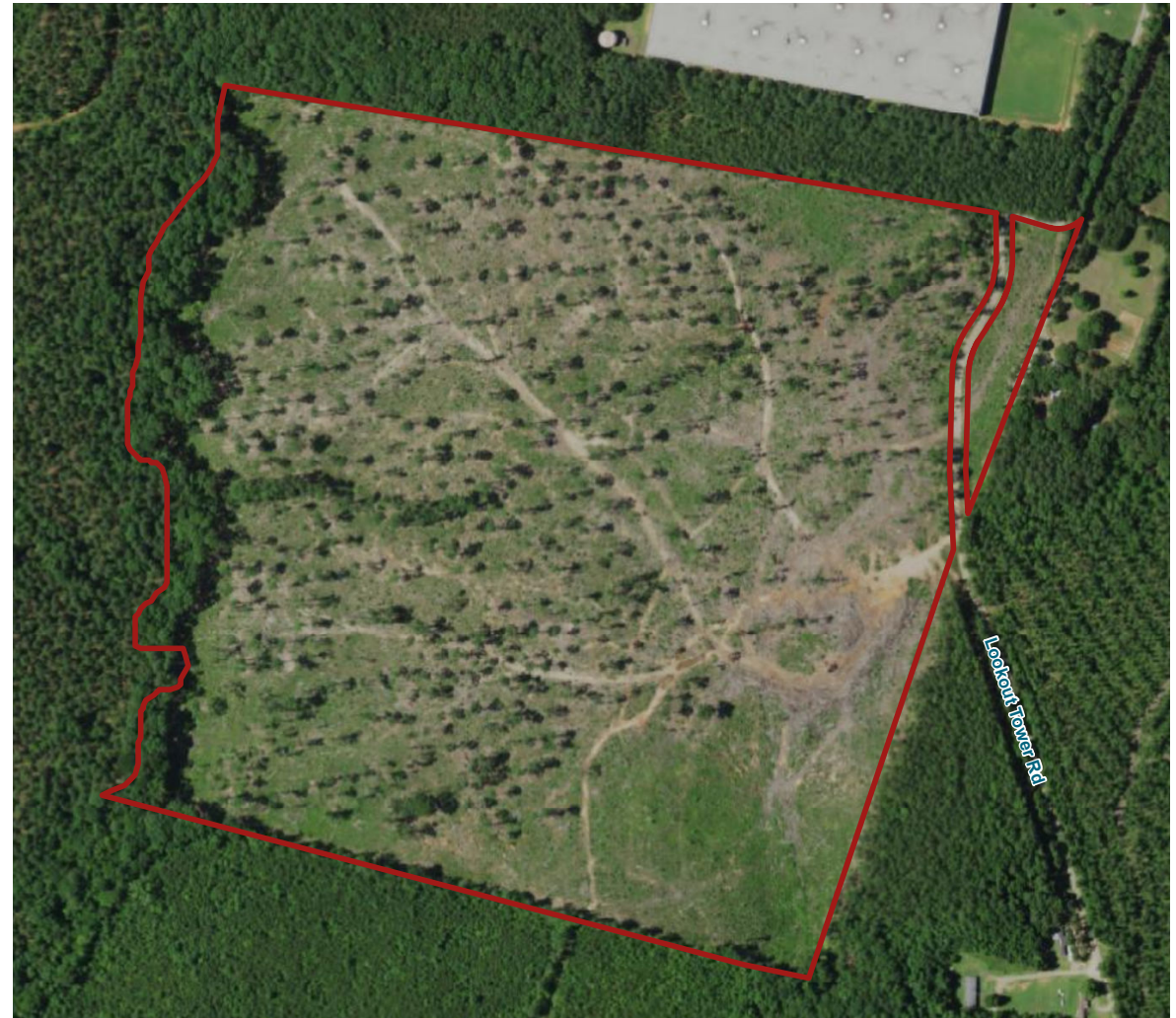
±81.55 Acres

Residential/Timber/Recreational Tract

Property Features

- 81.55± Acres located just off Highway 34 between Ridgeway and Winnsboro
- 1.25± miles from the I-77 (Exit 34) and Highway 34 Interchange
- 30 minutes North of Downtown Columbia and 1 Hour South of Downtown Charlotte
- Zoned RD-1 in Fairfield County: Rural District
- Sewer and Water along Highway 34
- Gentle Topography throughout most of property
- Great convenient place to “Buy and Build”
- Several “Cleared Areas” ideal for Home Site(s) or Food Plots

Sales Price:
\$265,038 or \$3,250/acre



Lookout Tower Road

Ridgeway, South Carolina

For Sale

±81.55 Acres

Residential/Timber/Recreational Tract



Survey

Residential/Timber/Recreational Tract

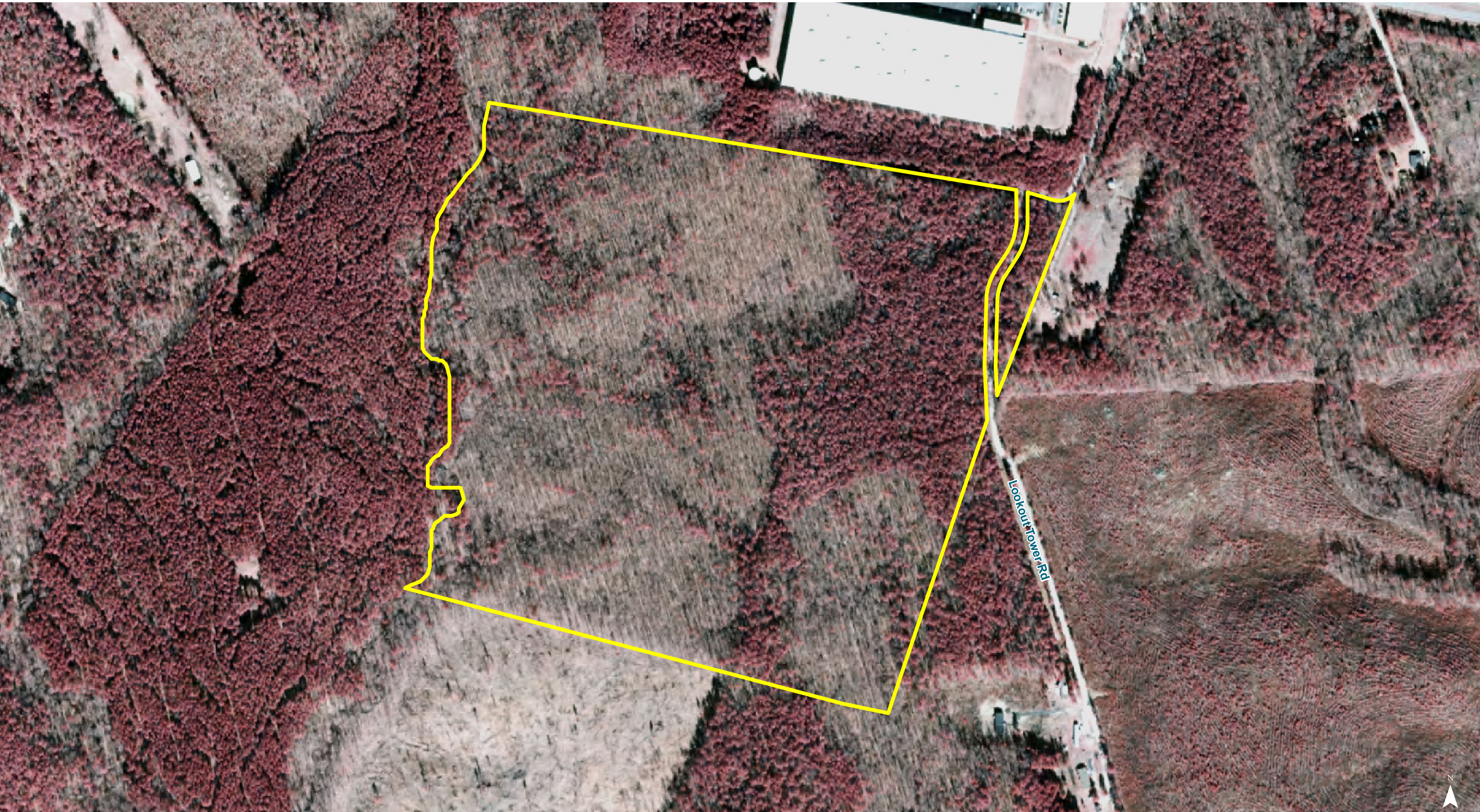




Map Updated: Wednesday, September 2, 2020. This information submitted is not guaranteed. Although obtained from reliable sources, all information should be confirmed prior to use or reliance upon the information. This document may not be reproduced in whole or in part without the express written consent of NAI Columbia.



Map Updated: Monday, June 21, 2021. This information submitted is not guaranteed. Although obtained from reliable sources, all information should be confirmed prior to use or reliance upon the information. This document may not be reproduced in whole or in part without the express written consent of NAI Columbia.



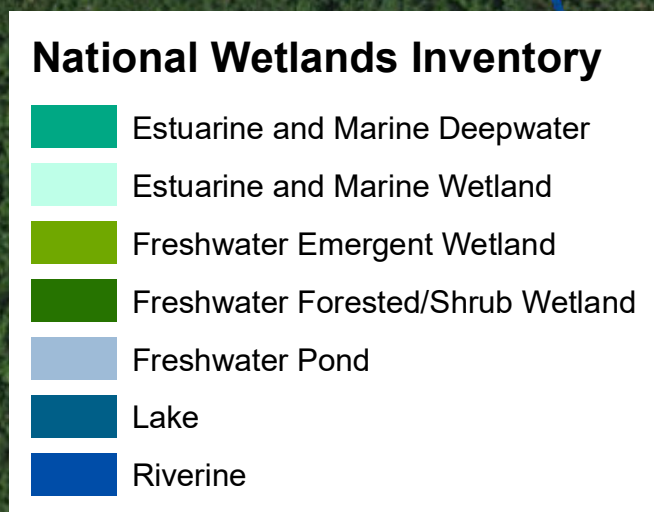
Map Updated: Monday, June 21, 2021. This information submitted is not guaranteed. Although obtained from reliable sources, all information should be confirmed prior to use or reliance upon the information. This document may not be reproduced in whole or in part without the express written consent of NAI Columbia.



Map Updated: Monday, June 21, 2021. This information submitted is not guaranteed. Although obtained from reliable sources, all information should be confirmed prior to use or reliance upon the information. This document may not be reproduced in whole or in part without the express written consent of NAI Columbia.



Map Updated: Monday, June 21, 2021. This information submitted is not guaranteed. Although obtained from reliable sources, all information should be confirmed prior to use or reliance upon the information. This document may not be reproduced in whole or in part without the express written consent of NAI Columbia.



Map Updated: Monday, June 21, 2021. This information submitted is not guaranteed. Although obtained from reliable sources, all information should be confirmed prior to use or reliance upon the information. This document may not be reproduced in whole or in part without the express written consent of NAI Columbia.



Map Updated: Monday, June 21, 2021. This information submitted is not guaranteed. Although obtained from reliable sources, all information should be confirmed prior to use or reliance upon the information. This document may not be reproduced in whole or in part without the express written consent of NAI Columbia.

Map Unit Description (Brief, Generated)

Fairfield County, South Carolina

[Minor map unit components are excluded from this report]

Map unit: CeB - Cecil sandy loam, 2 to 6 percent slopes

Component: Cecil (95%)

The Cecil component makes up 95 percent of the map unit. Slopes are 2 to 6 percent. This component is on broad and narrow ridges and sideslopes adjacent to drainageways in the piedmont. The parent material consists of residuum weathered from granite, gneiss, or schist. Depth to a root restrictive layer is greater than 60 inches. The natural drainage class is well drained. Water movement in the most restrictive layer is moderately high. Available water to a depth of 60 inches is moderate. Shrink-swell potential is low. This soil is not flooded. It is not ponded. There is no zone of water saturation within a depth of 72 inches. Organic matter content in the surface horizon is about 1 percent. Nonirrigated land capability classification is 2e. This soil does not meet hydric criteria.

Map unit: CnC2 - Cecil sandy clay loam, 6 to 10 percent slopes, eroded

Component: Cecil (80%)

The Cecil component makes up 80 percent of the map unit. Slopes are 6 to 10 percent. This component is on hillslopes on uplands. The parent material consists of clayey residuum weathered from granite and gneiss. Depth to a root restrictive layer is greater than 60 inches. The natural drainage class is well drained. Water movement in the most restrictive layer is moderately high. Available water to a depth of 60 inches is moderate. Shrink-swell potential is low. This soil is not flooded. It is not ponded. There is no zone of water saturation within a depth of 72 inches. Organic matter content in the surface horizon is about 1 percent. Nonirrigated land capability classification is 4e. This soil does not meet hydric criteria.

Map unit: PaE - Pacolet sandy loam, 10 to 25 percent slopes

Component: Pacolet (85%)

The Pacolet component makes up 85 percent of the map unit. Slopes are 10 to 25 percent. This component is on hillslopes on uplands. The parent material consists of clayey residuum weathered from granite and gneiss. Depth to a root restrictive layer is greater than 60 inches. The natural drainage class is well drained. Water movement in the most restrictive layer is moderately high. Available water to a depth of 60 inches is moderate. Shrink-swell potential is low. This soil is not flooded. It is not ponded. There is no zone of water saturation within a depth of 72 inches. Organic matter content in the surface horizon is about 1 percent. Nonirrigated land capability classification is 6e. This soil does not meet hydric criteria.

Map unit: To - Toccoa loam

Component: Toccoa (70%)

The Toccoa component makes up 70 percent of the map unit. Slopes are 0 to 2 percent. This component is on flood plains on valleys. The parent material consists of loamy alluvium. Depth to a root restrictive layer is greater than 60 inches. The natural drainage class is moderately well drained. Water movement in the most restrictive layer is high. Available water to a depth of 60 inches is moderate. Shrink-swell potential is low. This soil is occasionally flooded. It is not ponded. A seasonal zone of water saturation is at 45 inches during January, February, March, April, December. Organic matter content in the surface horizon is about 2 percent. Nonirrigated land capability classification is 2w. This soil does not meet hydric criteria.