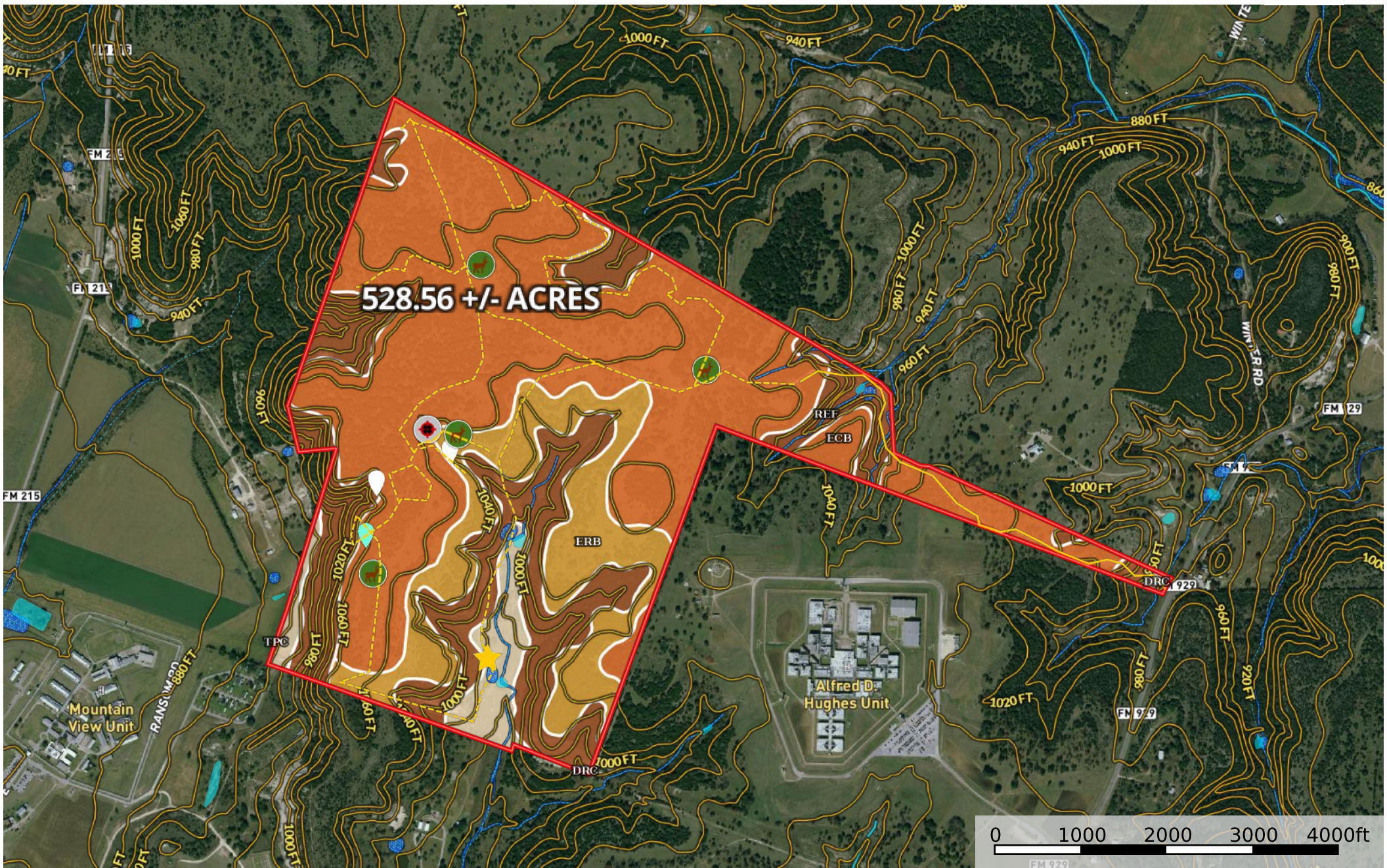


Finley - Sunset Bluff Ranch - 3719 FM 929
Coryell County, Texas, 528.56 AC +/-



- CAVES Marker
- Arrowheads
- Feeder
- Blind
- Camp Site / RV
- Boundary
- Road / Trail
- Primary Road
- Wetlands
- Riparian
- Stream, Intermittent
- River/Creek
- Water Body








| SOIL CODE | SOIL DESCRIPTION | ACRES | % | CAP |
|-----------|--|-------|-------|------|
| TpC | Topsey-Pidcoke association, 2 to 8 percent slopes | 0.0 | 0.0 | 4s |
| EcB | Eckrant very cobbly silty clay, 1 to 5 percent slopes, very stony | 294.7 | 56.43 | 4s |
| DrC | Doss-Real complex, 1 to 8 percent slopes | 25.4 | 4.87 | 6e |
| ErB | Eckrant-Rock outcrop complex, 1 to 8 percent slopes, extremely stony | 78.1 | 14.96 | 8 |
| ReF | Real-Rock outcrop complex, 12 to 40 percent slopes | 124.0 | 23.74 | 8s |
| TOTALS | | 522.3 | 100% | 5.65 |

Capability Legend

Increased Limitations and Hazards

Decreased Adaptability and Freedom of Choice Users

Land, Capability

| |  |  |  |  |  |  |  |  |
|--------------|---|---|---|---|--|---|---|---|
| | 1 | 2 | 3 | 4 | 5 | 6 | 7 | 8 |
| 'Wild Life' | • | • | • | • | • | • | • | • |
| Forestry | • | • | • | • | • | • | • | |
| Limited | • | • | • | • | • | • | • | |
| Moderate | • | • | • | • | • | • | | |
| Intense | • | • | • | • | • | | | |
| Limited | • | • | • | • | | | | |
| Moderate | • | • | • | | | | | |
| Intense | • | • | | | | | | |
| Very Intense | • | | | | | | | |

Grazing Cultivation

(c) climatic limitations (e) susceptibility to erosion

(s) soil limitations within the rooting zone (w) excess of water