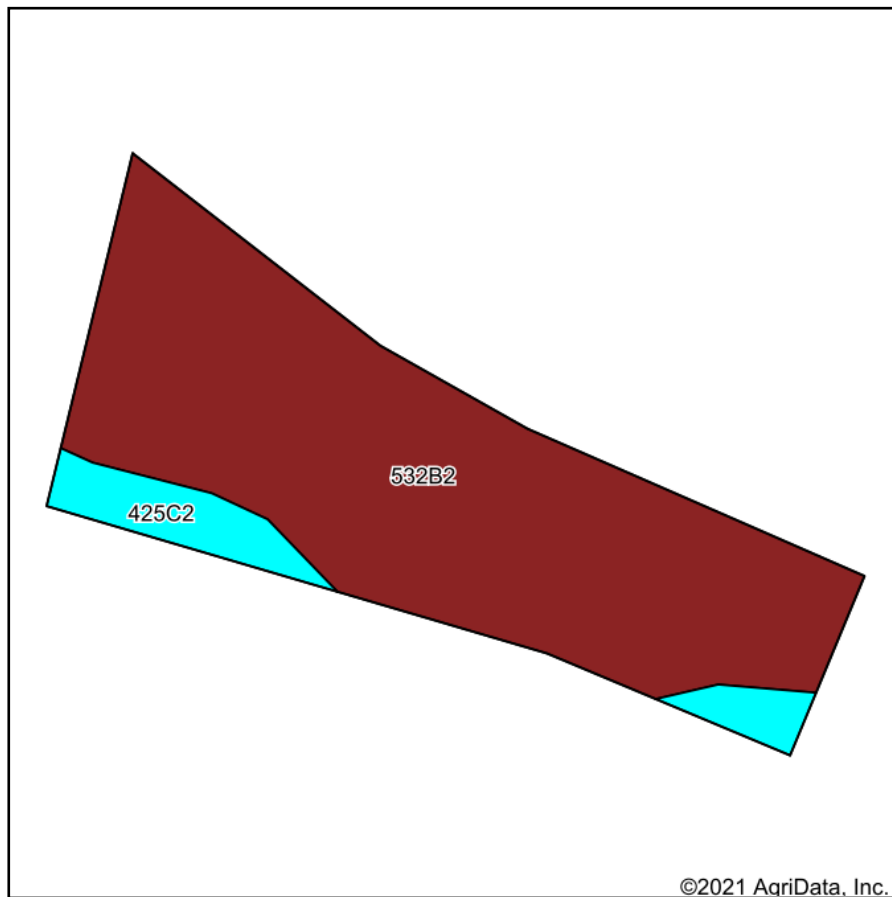
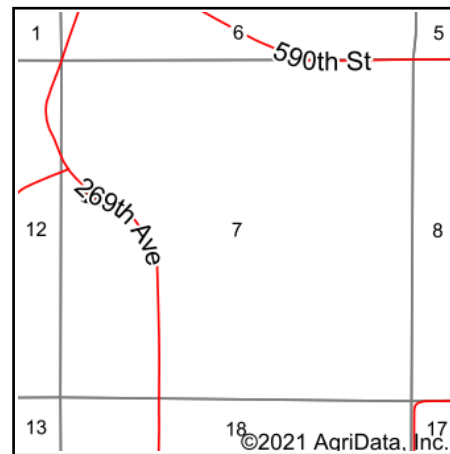


Soils Map



Soils data provided by USDA and NRCS.



State: **Iowa**
 County: **Appanoose**
 Location: **7-67N-16W**
 Township: **Wells**
 Acres: **1.15**
 Date: **6/25/2021**

Hawkeye Farm Mgmt & Real Estate



22 N Main, Albion IA Phone: 641-932-7796
 Email: hawkeye@uciowa.com
 On the web: www.uciowa.com
 www.iowawhitetailfarms.com

Maps Provided By:



© AgriData, Inc. 2021

www.AgriDataInc.com



Area Symbol: IA007, Soil Area Version: 27

| Code | Soil Description | Acres | Percent of field | CSR2 Legend | Non-Irr Class *c | CSR2** | CSR | *n NCCPI Soybeans |
|-------------------------|---|-------|------------------|-------------|------------------|-------------|-----------|-------------------|
| 532B2 | Rathbun silty clay loam, 2 to 5 percent slopes, moderately eroded | 1.03 | 89.6% | | IIIe | 52 | 43 | 54 |
| 425C2 | Keswick loam, 5 to 9 percent slopes, moderately eroded | 0.12 | 10.4% | | IIIe | 27 | 24 | 40 |
| Weighted Average | | | | | | 49.4 | 41 | *n 52.5 |

**IA has updated the CSR values for each county to CSR2.

*n: The aggregation method is "Weighted Average using all components"

*c: Using Capabilities Class Dominant Condition Aggregation Method

Soils data provided by USDA and NRCS.