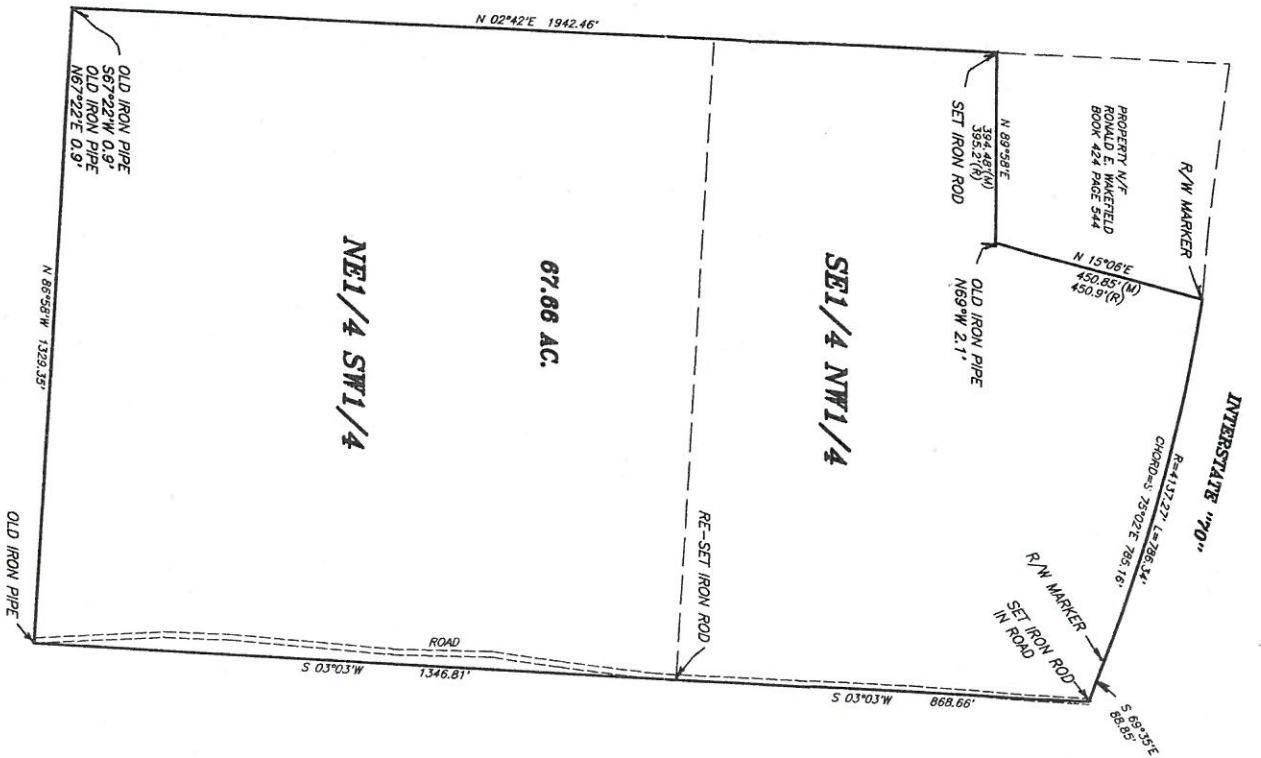


SECTION 27
TOWNSHIP 48 NORTH
RANGE 5 WEST
MONTGOMERY COUNTY, MO.



THIS IS TO CERTIFY THAT AT THE REQUEST OF
ERIC MERCHANT, WE HAVE MADE A
SURVEY AS SHOWN ABOVE AND THAT IT REPRESENTS A
TRUE AND ACCURATE RECORD OF SAID SURVEY AND
WAS EXECUTED IN ACCORDANCE WITH THE CURRENT
MINIMUM STANDARDS FOR PROPERTY BOUNDARY SURVEYS
OF THE MISSOURI STATE LAND SURVEY
LARRY P. BADE
PROFESSIONAL SURVEYOR NO. 151433

CLASS OF SURVEY--RURAL

Lewis-Bade Inc.

Professional Land Surveyors
and Professional Engineers

PHONE (636) 456-2615 101 EAST WALTON WARRENTON, MO. 63383

SURVEYED BY DATE REVISIONS

STU. JOSH APRIL, 2004

DRAWN BY:

CHECKED BY:

SCALE