


 1 PG  
PLAT

# SUBDIVISION PLAT ESTABLISHING SENDERO CROSSING

 A PLAT OF 399.320 ACRES OF LAND SITUATED ABOUT 11.9 MILES  
N 61° W OF JOURDANTON, IN ATASCOSA COUNTY, TEXAS.

@ Previously known as 399.34 acre tract to Newnan SV-49-ABS 639

 THE STATE OF TEXAS  
COUNTY OF ATASCOSA

KNOW ALL MEN BY THESE PRESENTS:

 THAT I, JONATHAN H. ROTH, BEING A REGISTERED PROFESSIONAL LAND SURVEYOR, REGISTERED  
IN THE STATE OF TEXAS, DO HEREBY CERTIFY THAT THIS PLAT WAS PREPARED FROM AN  
ACTUAL AND ACCURATE ON-THE-GROUND SURVEY OF THE LAND SHOWN HEREON, AND THAT  
THE CORNER MONUMENTS SHOWN HEREON WERE PLACED UNDER MY PERSONAL SUPERVISION, IN  
ACCORDANCE WITH THE SUBDIVISION REGULATIONS OF ATASCOSA COUNTY, TEXAS.

 Jonathan H. Roth  
REGISTERED PROFESSIONAL LAND SURVEYOR  
NO. 6286, STATE OF TEXAS


## CERTIFICATE OF THE PRECINCT COMMISSIONER

 I, THE UNDERSIGNED COMMISSIONER IN THE PRECINCT IN WHICH THE LAND SUBDIVIDED  
ACCORDING TO THE PLAT TO WHICH THIS CERTIFICATE IS PRESENTED, HEREBY CERTIFY THAT I  
HAVE REVIEWED THE SAID PLAT AND THAT ALL REQUIREMENTS OF ATASCOSA COUNTY FOR THE  
PRESENTATION OF THE PLAT FOR FINAL APPROVAL HAVE BEEN FULLY MET TO THE BEST OF  
MY KNOWLEDGE AND BELIEF.

COMMISSIONER

## CERTIFICATE OF COUNTY ATTORNEY

 ALL REQUIREMENTS OF THE SUBDIVISION ORDER CURRENTLY IN EFFECT HAVE BEEN MET  
ACCORDING TO MY BEST KNOWLEDGE AND BELIEF, AND THIS PLAT IS APPROVED FOR FINAL  
SUBMISSION.

COUNTY ATTORNEY

## CERTIFICATE OF FINAL APPROVAL

 APPROVED BY THE COMMISSIONERS COURT OF ATASCOSA COUNTY, TEXAS, THIS 14<sup>th</sup> DAY  
OF 2021 A.D.

 ATASCOSA COUNTY  
COMMISSIONER PRECINCT 1  
COMMISSIONER PRECINCT 2  
COMMISSIONER PRECINCT 3  
COMMISSIONER PRECINCT 4  
COMMISSIONER PRECINCT 5  
COMMISSIONER PRECINCT 6  
COMMISSIONER PRECINCT 7  
COMMISSIONER PRECINCT 8  
COMMISSIONER PRECINCT 9  
COMMISSIONER PRECINCT 10  
COMMISSIONER PRECINCT 11  
COMMISSIONER PRECINCT 12  
COMMISSIONER PRECINCT 13  
COMMISSIONER PRECINCT 14  
COMMISSIONER PRECINCT 15  
COMMISSIONER PRECINCT 16  
COMMISSIONER PRECINCT 17  
COMMISSIONER PRECINCT 18  
COMMISSIONER PRECINCT 19  
COMMISSIONER PRECINCT 20  
COMMISSIONER PRECINCT 21  
COMMISSIONER PRECINCT 22  
COMMISSIONER PRECINCT 23  
COMMISSIONER PRECINCT 24  
COMMISSIONER PRECINCT 25  
COMMISSIONER PRECINCT 26  
COMMISSIONER PRECINCT 27  
COMMISSIONER PRECINCT 28  
COMMISSIONER PRECINCT 29  
COMMISSIONER PRECINCT 30  
COMMISSIONER PRECINCT 31  
COMMISSIONER PRECINCT 32  
COMMISSIONER PRECINCT 33  
COMMISSIONER PRECINCT 34  
COMMISSIONER PRECINCT 35  
COMMISSIONER PRECINCT 36  
COMMISSIONER PRECINCT 37  
COMMISSIONER PRECINCT 38  
COMMISSIONER PRECINCT 39  
COMMISSIONER PRECINCT 40  
COMMISSIONER PRECINCT 41  
COMMISSIONER PRECINCT 42  
COMMISSIONER PRECINCT 43  
COMMISSIONER PRECINCT 44  
COMMISSIONER PRECINCT 45  
COMMISSIONER PRECINCT 46  
COMMISSIONER PRECINCT 47  
COMMISSIONER PRECINCT 48  
COMMISSIONER PRECINCT 49  
COMMISSIONER PRECINCT 50  
COMMISSIONER PRECINCT 51  
COMMISSIONER PRECINCT 52  
COMMISSIONER PRECINCT 53  
COMMISSIONER PRECINCT 54  
COMMISSIONER PRECINCT 55  
COMMISSIONER PRECINCT 56  
COMMISSIONER PRECINCT 57  
COMMISSIONER PRECINCT 58  
COMMISSIONER PRECINCT 59  
COMMISSIONER PRECINCT 60  
COMMISSIONER PRECINCT 61  
COMMISSIONER PRECINCT 62  
COMMISSIONER PRECINCT 63  
COMMISSIONER PRECINCT 64  
COMMISSIONER PRECINCT 65  
COMMISSIONER PRECINCT 66  
COMMISSIONER PRECINCT 67  
COMMISSIONER PRECINCT 68  
COMMISSIONER PRECINCT 69  
COMMISSIONER PRECINCT 70  
COMMISSIONER PRECINCT 71  
COMMISSIONER PRECINCT 72  
COMMISSIONER PRECINCT 73  
COMMISSIONER PRECINCT 74  
COMMISSIONER PRECINCT 75  
COMMISSIONER PRECINCT 76  
COMMISSIONER PRECINCT 77  
COMMISSIONER PRECINCT 78  
COMMISSIONER PRECINCT 79  
COMMISSIONER PRECINCT 80  
COMMISSIONER PRECINCT 81  
COMMISSIONER PRECINCT 82  
COMMISSIONER PRECINCT 83  
COMMISSIONER PRECINCT 84  
COMMISSIONER PRECINCT 85  
COMMISSIONER PRECINCT 86  
COMMISSIONER PRECINCT 87  
COMMISSIONER PRECINCT 88  
COMMISSIONER PRECINCT 89  
COMMISSIONER PRECINCT 90  
COMMISSIONER PRECINCT 91  
COMMISSIONER PRECINCT 92  
COMMISSIONER PRECINCT 93  
COMMISSIONER PRECINCT 94  
COMMISSIONER PRECINCT 95  
COMMISSIONER PRECINCT 96  
COMMISSIONER PRECINCT 97  
COMMISSIONER PRECINCT 98  
COMMISSIONER PRECINCT 99  
COMMISSIONER PRECINCT 100

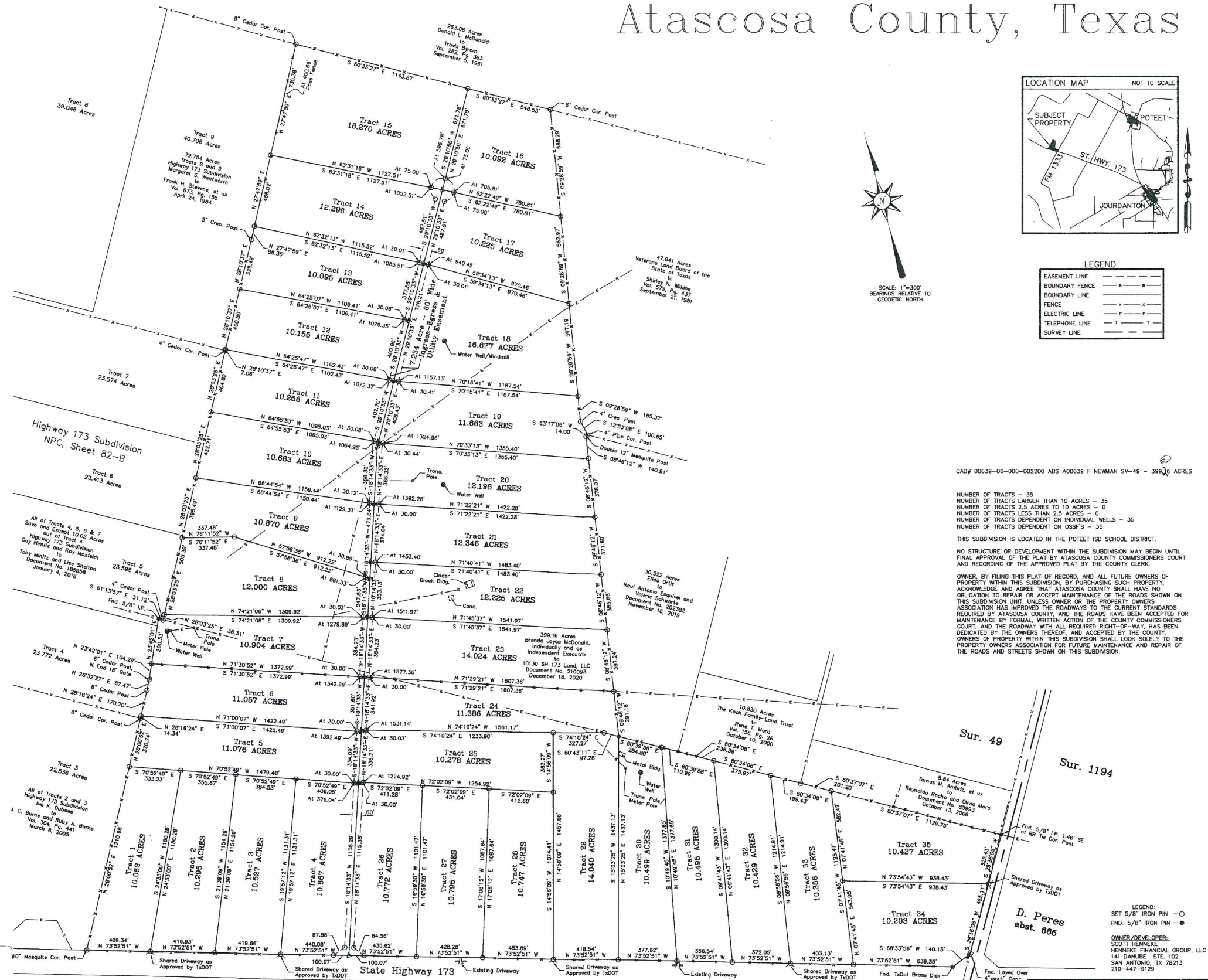
 STATE OF TEXAS  
COUNTY OF ATASCOSA

 I, \_\_\_\_\_ COUNTY CLERK OF SAID COUNTY, DO HEREBY CERTIFY THAT THE  
FOREGOING INSTRUMENT OF WRITING WITH ITS CERTIFICATE OF AUTHENTICATION WAS FILED FOR  
RECORD IN MY OFFICE ON THE \_\_\_\_\_ DAY OF \_\_\_\_\_ A.D., 2021, AT  
\_\_\_\_\_ M., AND DULY RECORDED THE \_\_\_\_\_ DAY OF \_\_\_\_\_ A.D., 2021,  
AT \_\_\_\_\_ ON PAGE \_\_\_\_\_

 IN TESTIMONY WHEREOF, I HAVE SET MY HAND AND OFFICIAL SEAL OF OFFICE THIS THE \_\_\_\_\_  
DAY OF \_\_\_\_\_ A.D., 2021.

 COUNTY CLERK  
ATASCOSA COUNTY, TEXAS

 FILED AND RECORDED  
OFFICIAL PUBLIC RECORDS

 Diane Gonzales, County Clerk  
Atascosa County, Texas  
June 24, 2021 01:12:33 PM  
FILED 1710 KSIMMONS 202100017  
PLAT

 Felix Newman  
abt. 639

 ROTH & ASSOCIATES, PLLC  
ENGINEERS & SURVEYORS  
1705 AVENUE K, P.O. BOX 426  
HONDO, TEXAS 78661  
ph: (830)426-3005 fax: (830)426-8160  
email: crassoc@hondo.net