

Approximate Location of TX-Hudspeth-55451

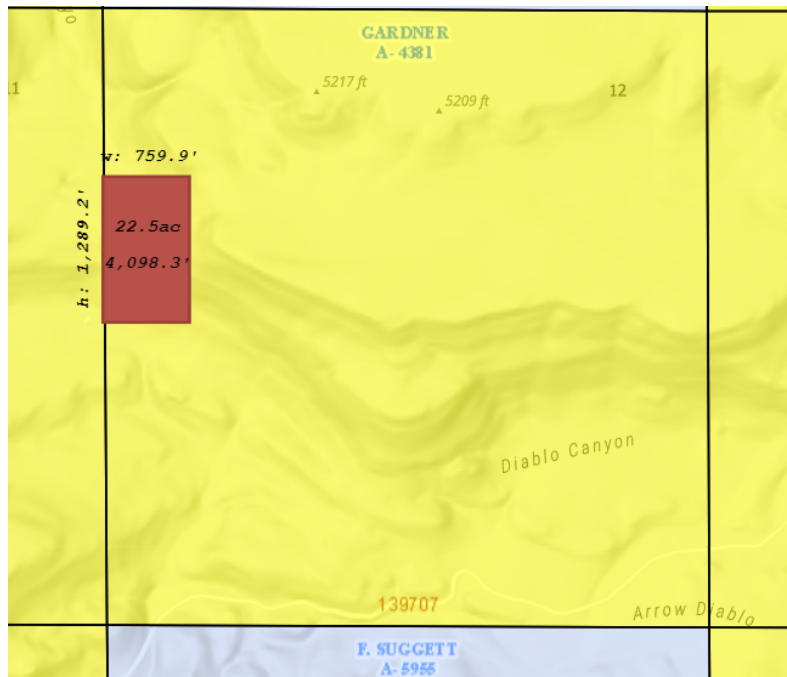
This is for personal use only and is not representative of a survey.

From the deed of the property:

Beginning at a point, said point being the southeast corner of Section 12, thence North, along the eastern boundary of Section 12, a distance of 2669.89 feet to a point, thence West 4597.80 feet to a point, said point being the point of beginning for this parcel of land,

Thence West 761.30 feet to a point,
 Thence North 1289.45 feet to a point,
 Thence East 761.30 feet to a point,
 Thence South 1289.45 feet to a point of beginning.

Said parcel of land contains 981,650.67 square feet, or 22.54 acres more or less.



	Approximate Coordinates
Northwest Corner	-105.601870, 31.400072
Northeast Corner	-105.599413, 31.400008
Southeast Corner	-105.599413, 31.396455
Southwest Corner	-105.601859, 31.396482