



Jefferson County Missouri Home & Acreage iAuction - Signorino Farm

www.TrophyPA.com • (855) 573-5263 • leads@trophyPA.com



BIDDING ENDS WEDNESDAY, SEPTEMBER 29TH AT 10:00 AM
SEE FULL TERMS & CONDITIONS AT WWW.TROPHYPA.COM

PROPERTY ADDRESS:

2007 Meier Road
Festus, MO 63028

ACRES: 50
COUNTY: Jefferson

PROPERTY DESCRIPTION:

Due to some unforeseen health issues and the distance from my children I have decided to move closer to family and sell my house and acreage at internet only auction. Seller: Gloria Signorino

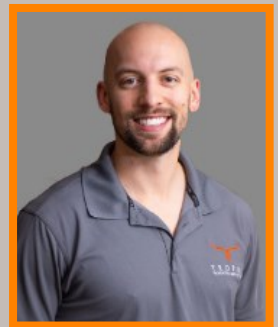
Open House Saturday, August 28th 9 AM to 12 PM.

Bidding ends Wednesday, September 29, 2021 at 10:00 AM.

Nestled in the rolling hills of Jefferson County near Festus is this incredible home, a 2.5-acre stocked lake, and 50± acres of woods and open land that can be yours to explore. The 4 bed, 6 bath home with walkout offers stunning views of the lake from almost every room in the house and with its custom woodwork, it is truly one of a kind. Outside, there is a garage with concrete floor with electric and loft. There is also a 2-stall horse stable with water, electric, and small hay-loft. The improvements are surrounded by 50± acres of timber that offer plenty of opportunity for hunting and/or recreation. There are existing trails currently throughout the property than can be used for ATV's or for horseback riding.

2020 real estate taxes were \$5,182.55.

HOA fee is an annual \$350 that covers the road and light maintenance to the driveway.



PRESENTED BY:

JAKE BROWN

**Licensed Salesperson &
Media Specialist**

M: (314) 602-1116

P: (855) 573-5263 x740

E: jbrown@trophyPA.com

Trophy Properties and Auction

15480 Clayton Road

Suite 101

Ballwin, MO 63011

www.TrophyPA.com

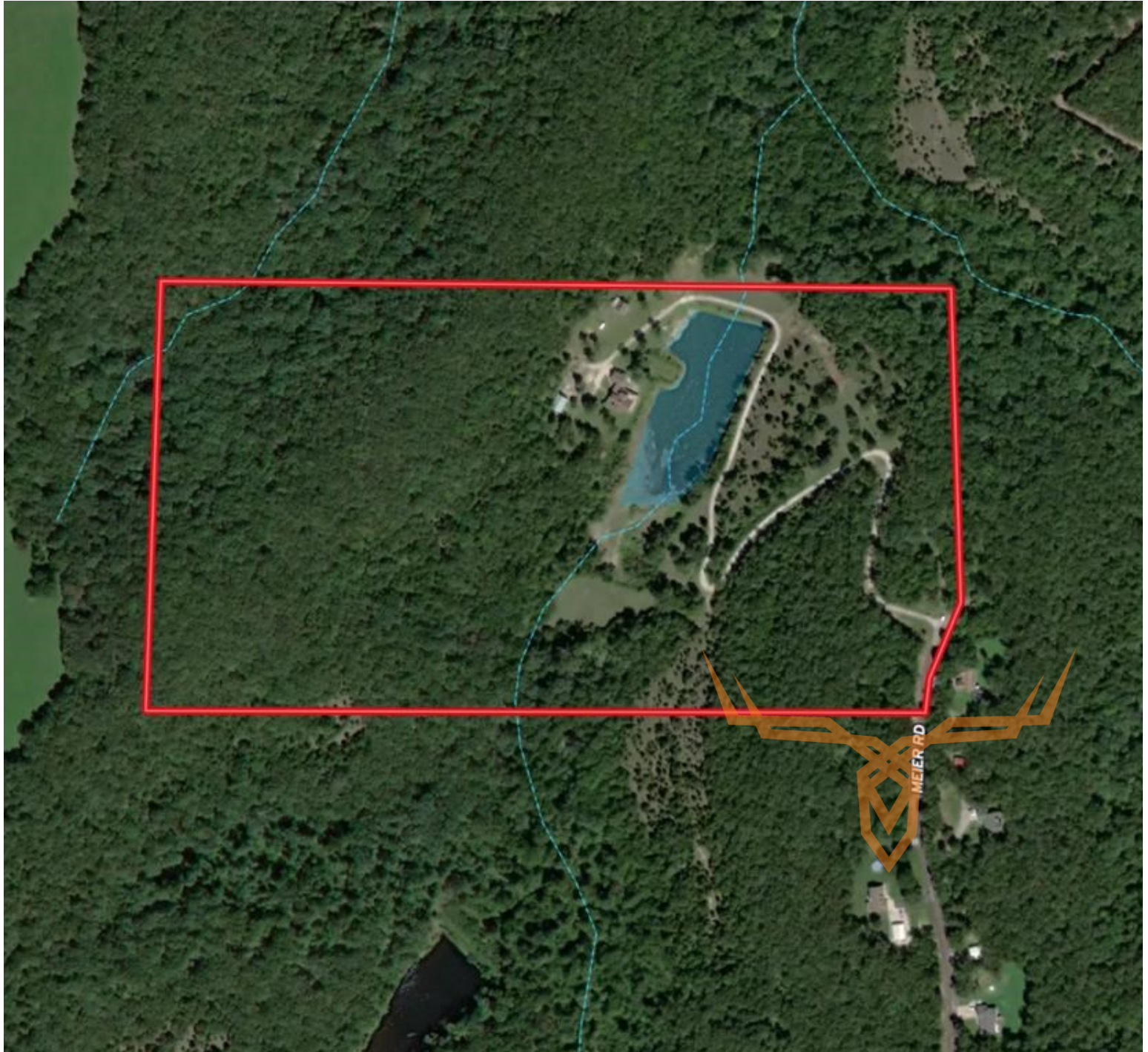
leads@trophyPA.com



Jefferson County Missouri Home & Acreage iAuction - Signorino Farm

T R O P H Y
PROPERTIES AND AUCTION
LAND | RECREATIONAL | RESIDENTIAL

www.TrophyPA.com • (855) 573-5263 • leads@trophy.com



The information is believed to be accurate; however, no liability for its accuracy, errors or omissions is assumed. All lines are drawn on maps, photographs, etc. are approximate. Buyers should verify the information to their satisfaction. There are no expressed or implied warranties pertaining to this property. Both real estate (including all improvements, if any) is being sold As Is, Where Is with NO warranties expressed or implied. Please make all inspections and have financing arranged prior to the end of bidding.