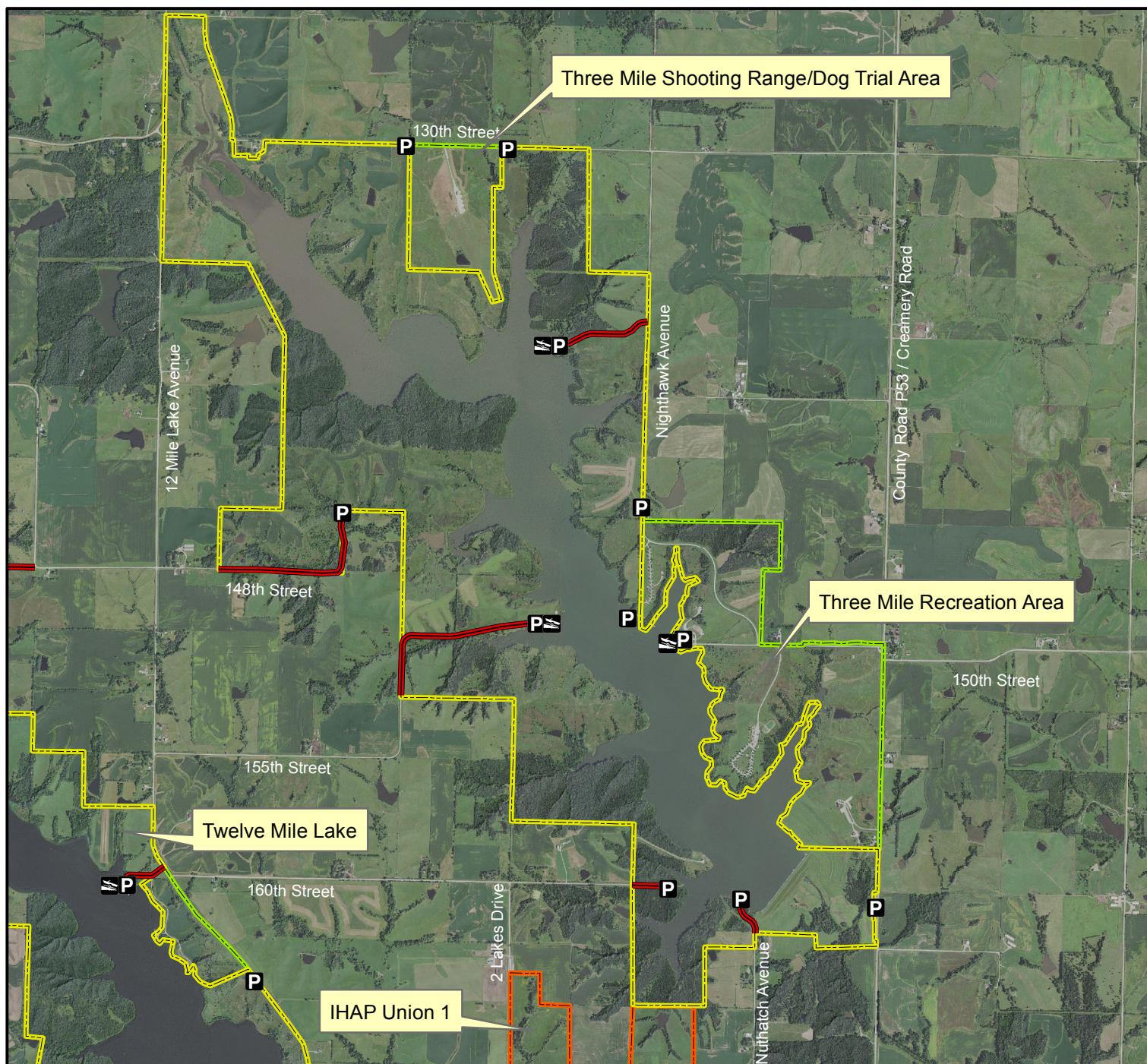


Three Mile Wildlife Management Area



Legend

State Areas open to hunting

WMA Boundary

IHAP Tract

Boat Ramp

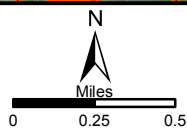
Parking Lot

Access Road

Other Public Land

2015 Aerial Photography

Map Creation Date: 9/2017



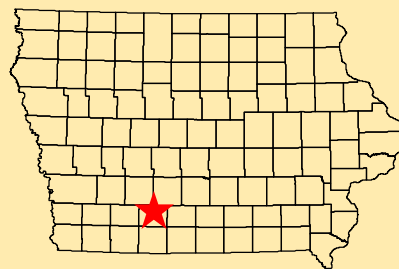
Acres: 2,675

Habitat: 1/4 Lake, 1/4 Timber,
1/2 Upland

Species: Deer, Turkey, Pheasant,
Waterfowl, Rabbit, Dove

Contact: Chad Paup
Grand River Wildlife Unit
515-238-5708

Union County, Iowa
T-72&73N, R-29&30W,
Sections 5, 13, 19, 24-25, 29-32



Directions: 3.5 miles N of Afton on P53.
1 mile W on 150th Street.

Every effort has been made to accurately depict the boundaries on this map. However, users should rely on boundary signs actually located in this area to ensure they do not trespass on private property.