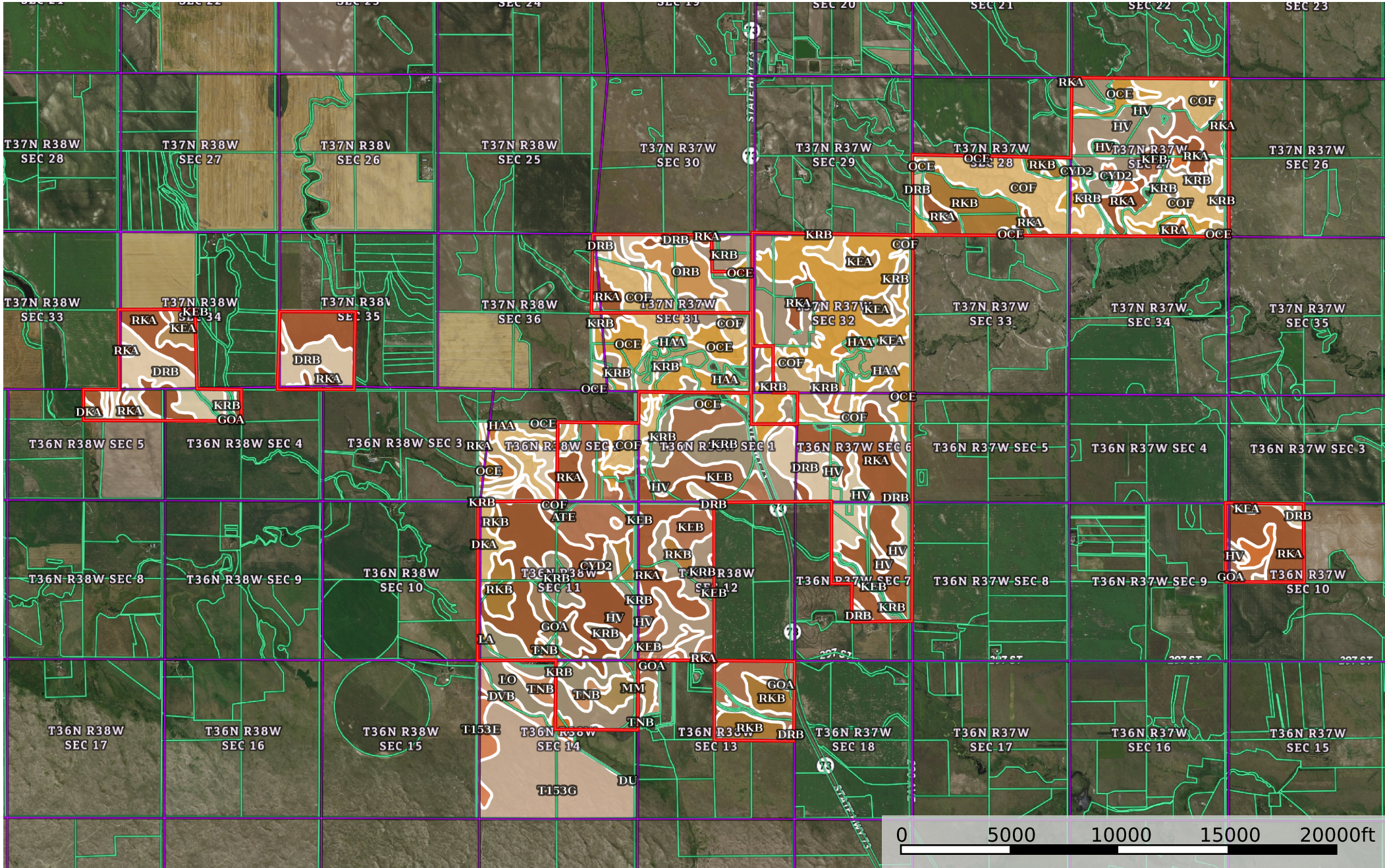



Sieck Farm Ranch II
South Dakota, 4841.37 AC +/-



Boundary

 5773.7 ac









SOIL CODE	SOIL DESCRIPTION	ACRES	%	CPI	CAP
KeA	Keith silt loam, 0 to 3 percent slopes	74.1	1.28	91	2c
KrA	Keith-Rosebud silt loams, 0 to 2 percent slopes	39.6	0.69	87	2c
DrB	Dawes-Richfield silt loams, 0 to 5 percent slopes	405.4	7.02	65	3s
RkA	Richfield-Keith silt loams, 0 to 2 percent slopes	1190.7	20.62	79	2c
KrB	Keith-Rosebud silt loams, 2 to 6 percent slopes	908.7	15.74	82	3e
OcE	Oglala-Canyon loams, 9 to 25 percent slopes	631.5	10.94	38	6e
Hv	Hoven silt loam, 0 to 1 percent slopes	57.6	1.0	14	6s
CyD2	Canyon-Rosebud loams, 3 to 12 percent slopes	14.9	0.26	30	6e
CoF	Canyon-Oglala loams, 18 to 40 percent slopes	605.2	10.48	10	7e
RkB	Richfield-Keith silt loams, 2 to 6 percent slopes	255.6	4.43	70	2e
KeB	Keith silt loam, 3 to 6 percent slopes	490.4	8.49	85	2e
HaA	Haverson loam, 0 to 3 percent slopes, occasionally flooded	56.1	0.97	79	3w
OrB	Oglala-Rosebud silt loams, 3 to 6 percent slopes	69.4	1.2	69	2e
GoA	Mobridge silt loam, 0 to 3 percent slopes	101.3	1.75	91	2e
T153G	Valentine fine sand, hilly, 24 to 60 percent slopes	302.0	5.23	6	7e
Aa	Lohmiller silty clay loam, channeled, 0 to 2 percent slopes	223.8	3.88	34	6w
TnB	Tuthill-Anselmo fine sandy loams, 0 to 5 percent slopes	43.7	0.76	52	3e
Mm	Mosher-Minatare complex, 0 to 6 percent slopes	37.2	0.65	27	4s
Du	Dunday-Elsmere loamy fine sands, 0 to 3 percent slopes	14.7	0.25	57	4e
AtE	Anselmo-Tassel fine sandy loams, 9 to 18 percent slopes	42.3	0.73	23	6e
La	Lamo silt loam, 0 to 2 percent slopes	5.4	0.09	51	6w
VaE	Valentine fine sand, 9 to 25 percent slopes	2.5	0.04	13	6e
Lo	Loup fine sandy loam, 0 to 2 percent slopes	106.5	1.84	31	5w
DvB	Dunday-Valentine complex, 0 to 5 percent slopes	25.9	0.45	37	4e
T153E	Valentine fine sand, rolling, 9 to 24 percent slopes	30.3	0.53	10	6e
DkA	Dawes-Keith silt loams, 0 to 3 percent slopes	38.8	0.67	70	3s
TOTALS		5773.7	100%	58.29	3.82

Capability Legend

Increased Limitations and Hazards

Decreased Adaptability and Freedom of Choice Users

Land, Capability

								
	1	2	3	4	5	6	7	8
'Wild Life'	•	•	•	•	•	•	•	•
Forestry	•	•	•	•	•	•	•	
Limited	•	•	•	•	•	•	•	
Moderate	•	•	•	•	•	•		
Intense	•	•	•	•	•			
Limited	•	•	•	•				
Moderate	•	•	•					
Intense	•	•						
Very Intense	•							

Grazing Cultivation

(c) climatic limitations (e) susceptibility to erosion

(s) soil limitations within the rooting zone (w) excess of water