

Otter Creek



Property Features

Sharing a common boundary with the 68,000-acre St. Marks Wildlife Refuge, the 168-acre Otter Creek tract will appeal to those who covet a recreational / hunting property with an “Old Florida” feel. A mosaic of live oaks, palmettos, merchantable pines, and hardwood hammocks create a diverse and attractive landscape that supports a wide-ranging wildlife population. Two small ponds are a nice property feature that provide an important water source.

Wildlife and Recreation

Otter Creek is located four miles east of the historic town of Sopchoppy (Wakulla County) in an area residents refer to as “Buckhorn”. Local lore has it that this name derives from the reputation it developed over many years for possessing the best deer hunting in Wakulla County. So, it’s no surprise that whitetail deer are abundant along with wild turkeys – make sure to check out the photos below. If you’re not a hunter, the property lends itself just as well for wildlife viewing or as a personal retreat.

At a Glance:

Acreage:

168 +/- acres

Asking Price:

\$3,795 per acre

Location:

Wakulla County, Florida

Special Attributes:

- Borders St. Marks Wildlife Refuge
- Good Hunting
- Old Florida Landscape
- Numerous Nearby Outdoor Activities

Arnie Rogers, Licensed Real Estate Broker

Verdura Realty, LLC • 227 East 6th Avenue • Tallahassee, FL 32303

Cell: 850.491.3288 • Email: arogers@verduraproperties.com

www.VerduraProperties.com



Please note that while all information is believed to be reliable, none is guaranteed.

Otter Creek

Wildlife and Recreation *continued*

Aside from the property's inherent qualities, Otter Creek enjoys proximity to Tallahassee and its many amenities – all a short 45-minute drive away. Perhaps the bigger draw, however, is the easy access to an abundance of nature-based sites and outdoor activities which bring significant benefits to the landowner.

- Apalachicola National Forest (632,890 acres) – 1 minute
- Florida Trail – 1 minute
- Sopchoppy River – 6 minutes
- Ochlockonee River State Park – 10 minutes
- Gulf of Mexico – 15 minutes
- Bald Point State Park – 20 minutes
- Saint James Bay Golf Club – 20 minutes
- Carrabelle (deep sea fishing) - 30 minutes
- St. George Island – 1 hour
- Apalachicola historic district - 1 hour

At a Glance:

Acreage:

168 +/- acres

Asking Price:

\$3,795 per acre

Location:

Wakulla County, Florida

Special Attributes:

- Borders St. Marks Wildlife Refuge
- Good Hunting
- Old Florida Landscape
- Numerous Nearby Outdoor Activities



Arnie Rogers, Licensed Real Estate Broker

Verdura Realty, LLC • 227 East 6th Avenue • Tallahassee, FL 32303

Cell: 850.491.3288 • Email: arogers@verduraproperties.com

www.VerduraProperties.com



Please note that while all information is believed to be reliable, none is guaranteed.

Otter Creek

Land Photos



Arnie Rogers, Licensed Real Estate Broker
Verdura Realty, LLC • 227 East 6th Avenue • Tallahassee, FL 32303
Cell: 850.491.3288 • Email: arogers@verduraproperties.com
www.VerduraProperties.com



Please note that while all information is believed to be reliable, none is guaranteed.

Otter Creek

Game Photos



Harvested buck photo was taken on a nearby property although it was photographed many times on Otter Creek. All other game photos were taken on either Otter Creek or owner's other property, Sopchoppy Preserve, located one-half mile away.

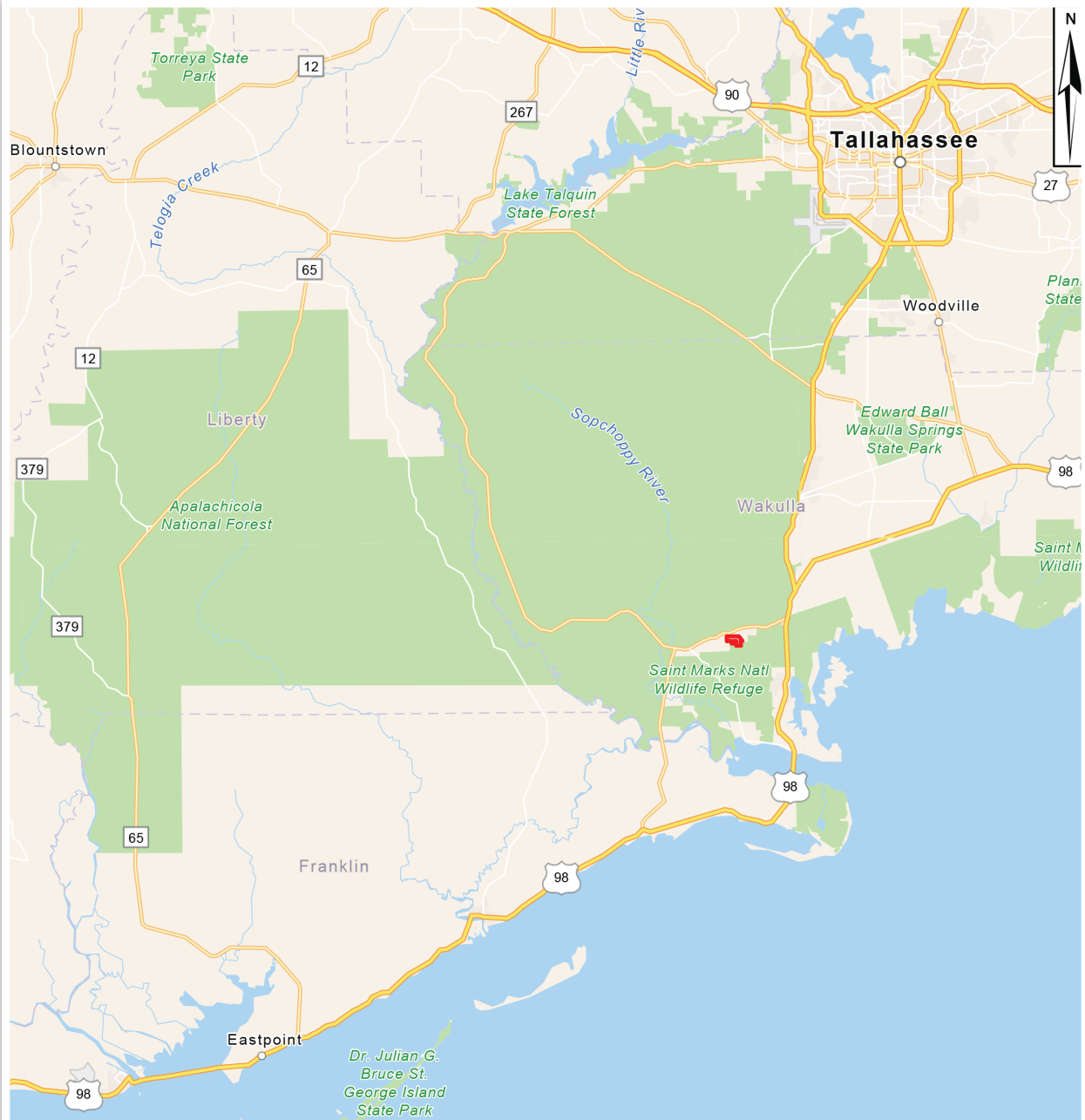
Arnie Rogers, Licensed Real Estate Broker
Verdura Realty, LLC • 227 East 6th Avenue • Tallahassee, FL 32303
Cell: 850.491.3288 • Email: arogers@verduraproperties.com
www.VerduraProperties.com



Please note that while all information is believed to be reliable, none is guaranteed.

Otter Creek

Location Map



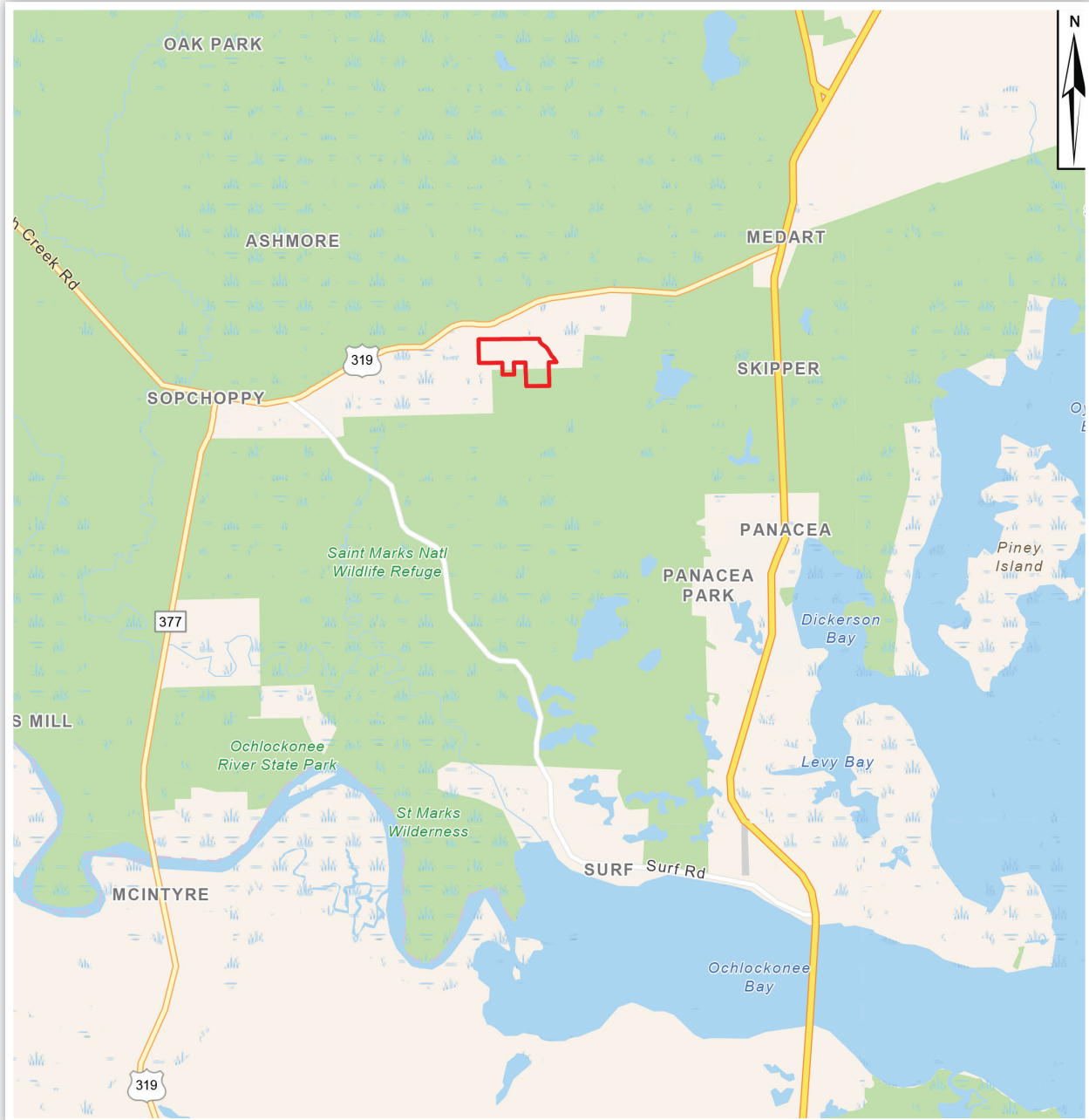
Arnie Rogers, Licensed Real Estate Broker
Verdura Realty, LLC • 227 East 6th Avenue • Tallahassee, FL 32303
Cell: 850.491.3288 • Email: arogers@verduraproperties.com
www.VerduraProperties.com



Please note that while all information is believed to be reliable, none is guaranteed.

Otter Creek

Proximity Map



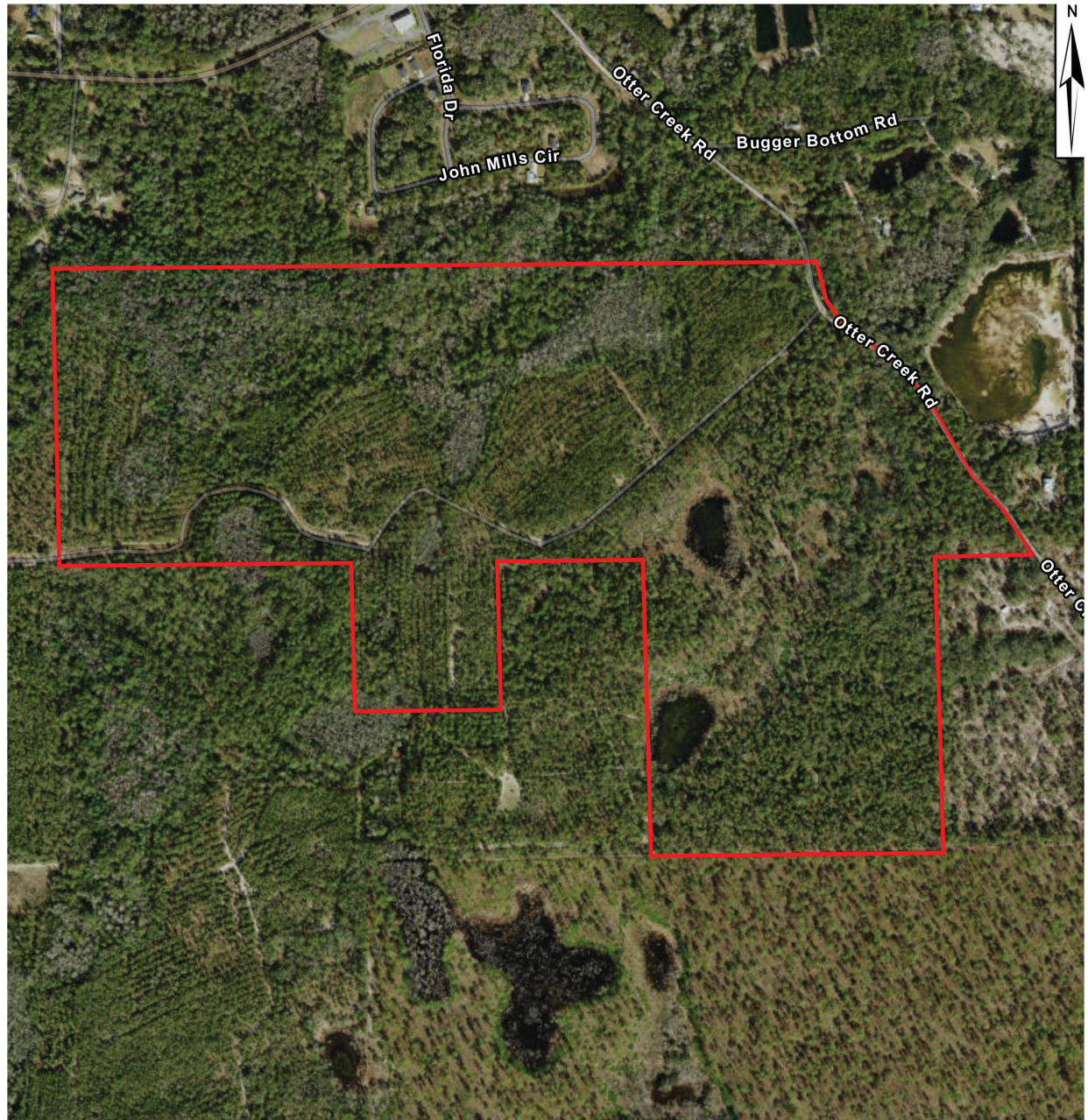
Arnie Rogers, Licensed Real Estate Broker
Verdura Realty, LLC • 227 East 6th Avenue • Tallahassee, FL 32303
Cell: 850.491.3288 • Email: arogers@verduraproperties.com
www.VerduraProperties.com



Please note that while all information is believed to be reliable, none is guaranteed.

Otter Creek

Aerial Map



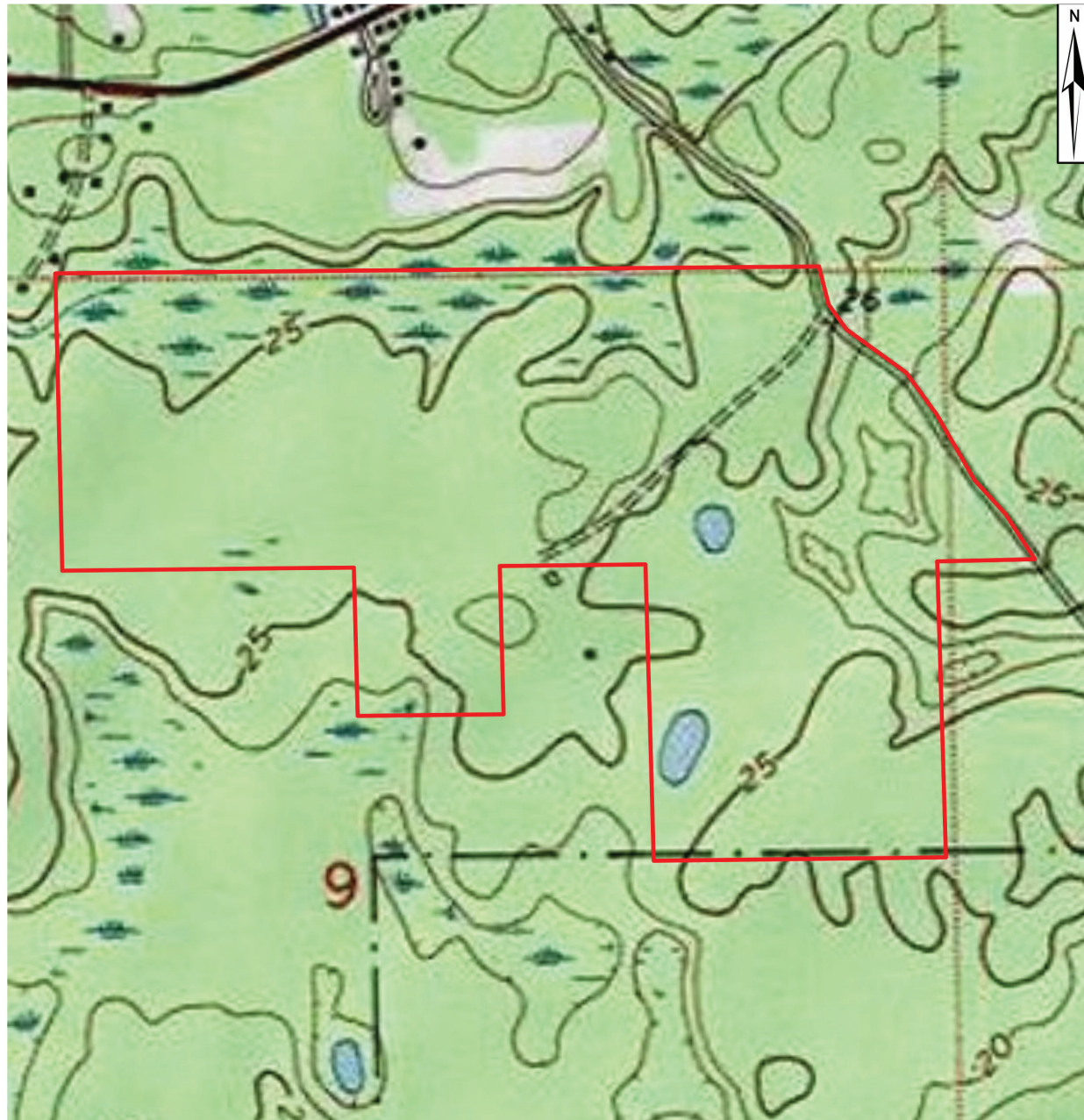
Arnie Rogers, *Licensed Real Estate Broker*
Verdura Realty, LLC • 227 East 6th Avenue • Tallahassee, FL 32303
Cell: 850.491.3288 • Email: arogers@verduraproperties.com
www.VerduraProperties.com



Please note that while all information is believed to be reliable, none is guaranteed.

Otter Creek

Topo Map



Arnie Rogers, Licensed Real Estate Broker
Verdura Realty, LLC • 227 East 6th Avenue • Tallahassee, FL 32303
Cell: 850.491.3288 • Email: arogers@verduraproperties.com
www.VerduraProperties.com



Please note that while all information is believed to be reliable, none is guaranteed.