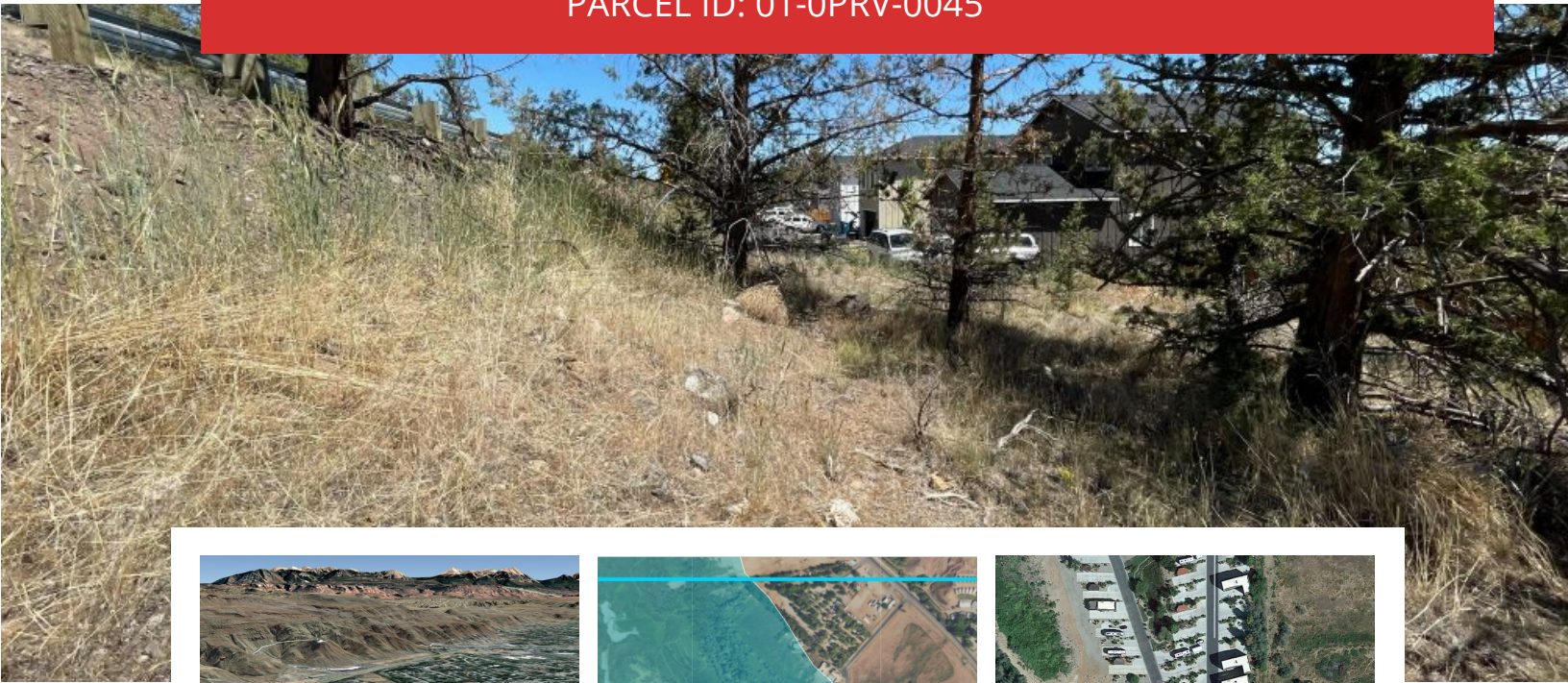


# 0.08 acre in Moab, UT! RV resort/Vacation homes

PARCEL ID: 01-0PRV-0045



## Description

Grab this amazing opportunity to own a RV ready lot or build your dream home inside Moab's Premier RV Resort and Vacation Home Rentals situated just 6 mins away from downtown Moab. It is beautifully surrounded by awesome mountain views, amazing landscape, and gorgeous panoramic views of Utah Canyonlands and LaSal Mountains. Located inside Portal RV Resort - a luxury RV resort, you can bring your family, friends, and pets, and together enjoy the available amenities and the picture-perfect setting. As they say, "if you're into quiet sites in beautiful surroundings with a luxurious atmosphere, Portal RV Resort in Moab is the perfect place for you."

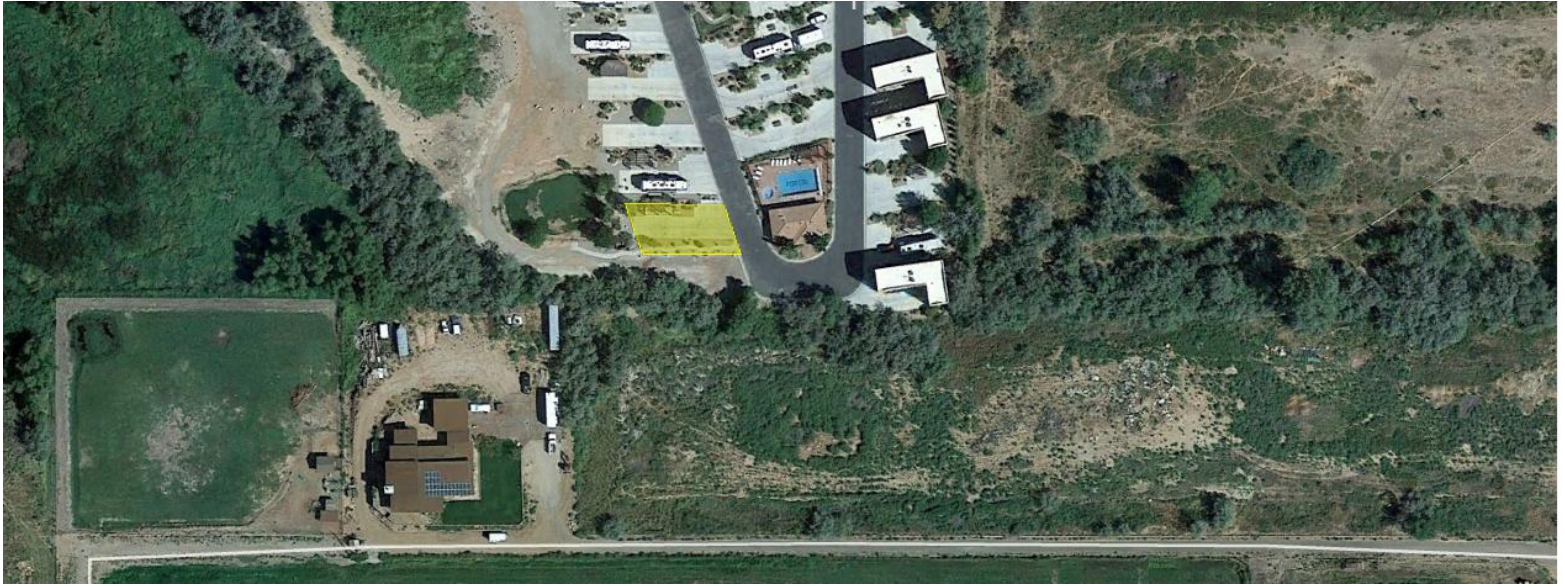
Adventure begins now! This property is just a few minutes away from renowned national parks, hiking and biking trails, rock climbing, fishing, river rafting, and off-roading activities, and is adjacent to the Nature Conservancy's Matheson Wetlands Preserve. Nearby recreational areas include Arches National Park, Canyonlands National Park, Sand Flats Recreation Area, Canyon Rims Recreation Area, Colorado Riverside Recreation Area, Moab City Recreation, Pack Creek Picnic Area, and a lot more.

This property is not good for your eyes only, but you might find other ways to cash flow off your investment with this amazing property!

To find out more about the area, please watch this video: <https://youtu.be/hHokRVYSvSM>

wilcolandllc.com





Property Details:

ACREAGE	PARCEL ID	ZONING
0.08	01-OPRV-0045	N/A
COUNTY	STATE	ANNUAL TAXES
Grand	Utah	\$2,364.18

ACCESS

Located at 1261 N MAIN RUBICON TRL #45, MOAB, UT 84532 – Contact [miles@wilcolandllc.com](mailto:miles@wilcolandllc.com) if interested in viewing.

TERRAIN

Property is flat.

- **Zoning:** This is part of The Portal RV Resort in Moab. So there are some rules and regulations on their website here: <https://www.portalrvresort.com/home.html> **but in summary, people use these small lots to RV, build a vacation home, and there are lots with garages, decks, etc.** It's a really cool area and the website gives you a really good idea of what it's like here.
- **RV:** Yes.

Resort Rules and Regulations, link [here](#):



CENTER COORDINATES

38.58878971806359,  
-109.56847883431345

GOOGLE EARTH

[View on Google Earth](#)

GOOGLE MAPS

[View on Google Maps](#)

Contact property sales manager for  
pricing and terms!!

Questions? Contact the Property Sales Manager:

Miles McLaughlin | 605-250-1256 | Miles@WilcolandLLC.com

