

PRISTINE KANSAS FLINT HILLS RANCH LAND

Tract 2: 957 ± Acres Total
Offered in Chase County, KS



ReeceNichols
SOUTH CENTRAL KANSAS

An Independently Owned and Operated Member of the Reece & Nichols Alliance, Inc.

SELLER: WILLIAM HAW

Offered By

JAKE STEVEN, ALC

(316) 708.5960

jake@reecenichols.com

JOHN RUPP, ALC

(316) 250.5198

johnrupp@reecenichols.com

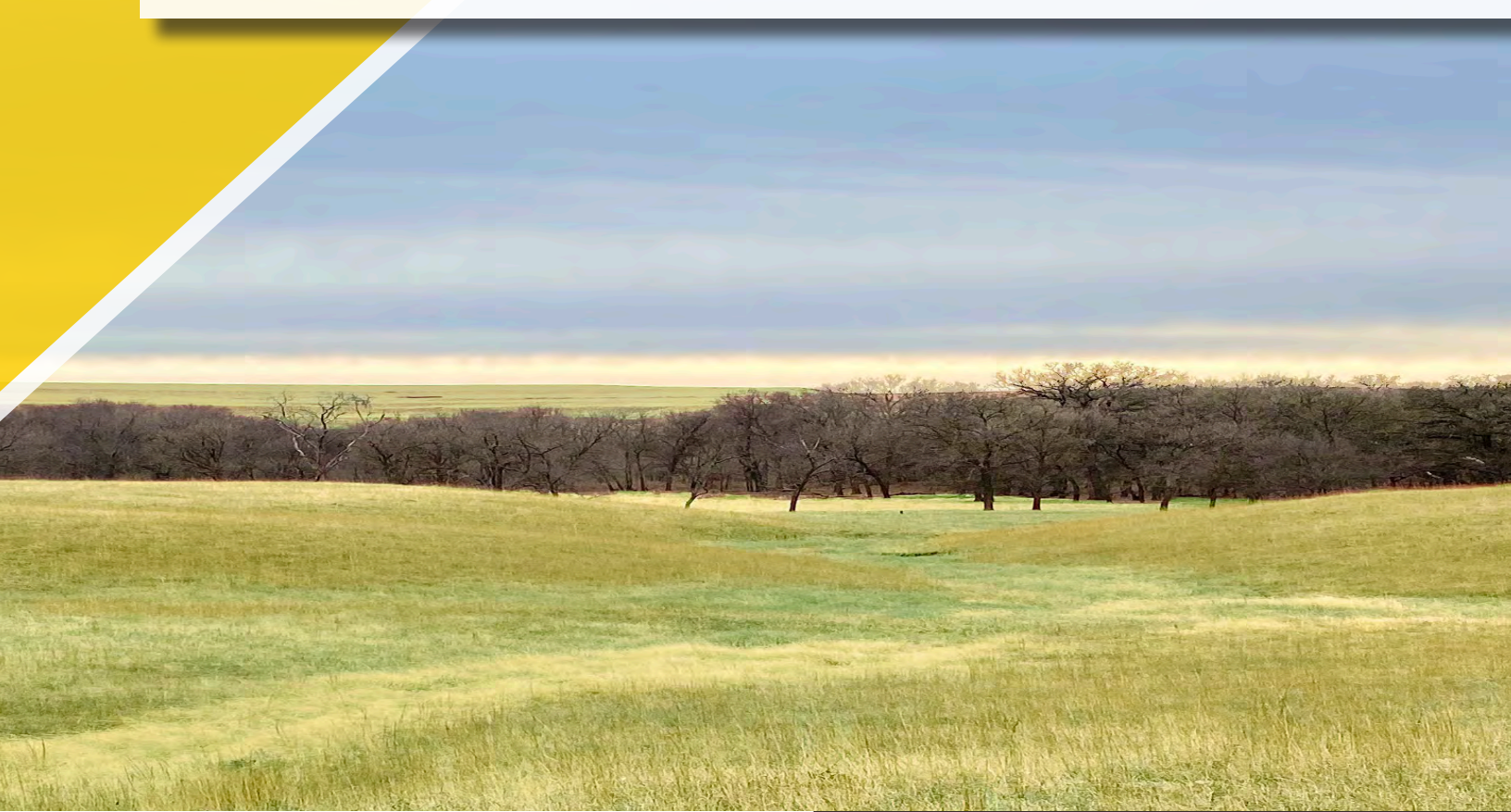
TERRY RUPP, ALC

(316) 259.2106

terry@reecenichols.com

HAW RANCH

Tract 2: 957 ± Acres Total



Property Details

Total Acres: 957 +/- Acres

List Price: \$2,100.00 per acre or \$2,009,700.00 total

2020 Real Estate Taxes: \$2,405.88

Legal Description: Long legal. Please contact agents.

Mineral Rights: Seller's mineral interest transfers

Ranch Notes:

- Good fencing
- A conservation easement runs with the property. Contact agent for details.
- Ranch is typically burned annually.
- Abundant water
- Quality ranch roads

Ranch Comments:

The Haw Ranch is located in the heart of the Kansas Flint Hills, home to some of the most majestic views in the state. The ranch has been part of Bill Haw's life work, showcasing his passion for the cattle industry and the purity of the native bluestem pastures. The current owner has spent decades compiling contiguous land to create one of the finest grazing units in the most productive grassland in North America. The ranch has been set up for an efficient cattle operation with multiple pasture units, quality fence, and great roads for shipping cattle. The land provides abundant water sources, with well maintained pasture ponds throughout the land. The land is located near the well known Bazaar Cattle Pens, a frequent tourist stop, as well as a hub for cattle ranchers. The next owner will have the endless enjoyment of a productive economic unit and tremendous hunting opportunities, and the finest views the Flint Hills have to offer!



ReeceNichols
SOUTH CENTRAL KANSAS
An Equal Opportunity, Diversity and Inclusion Employer
of the Reece & Nichols Companies, Inc.

John Rupp, ALC

316.250.5198

johnrupp@reecenichols.com

Jake Steven, ALC

316.708.5960

jake@reecenichols.com

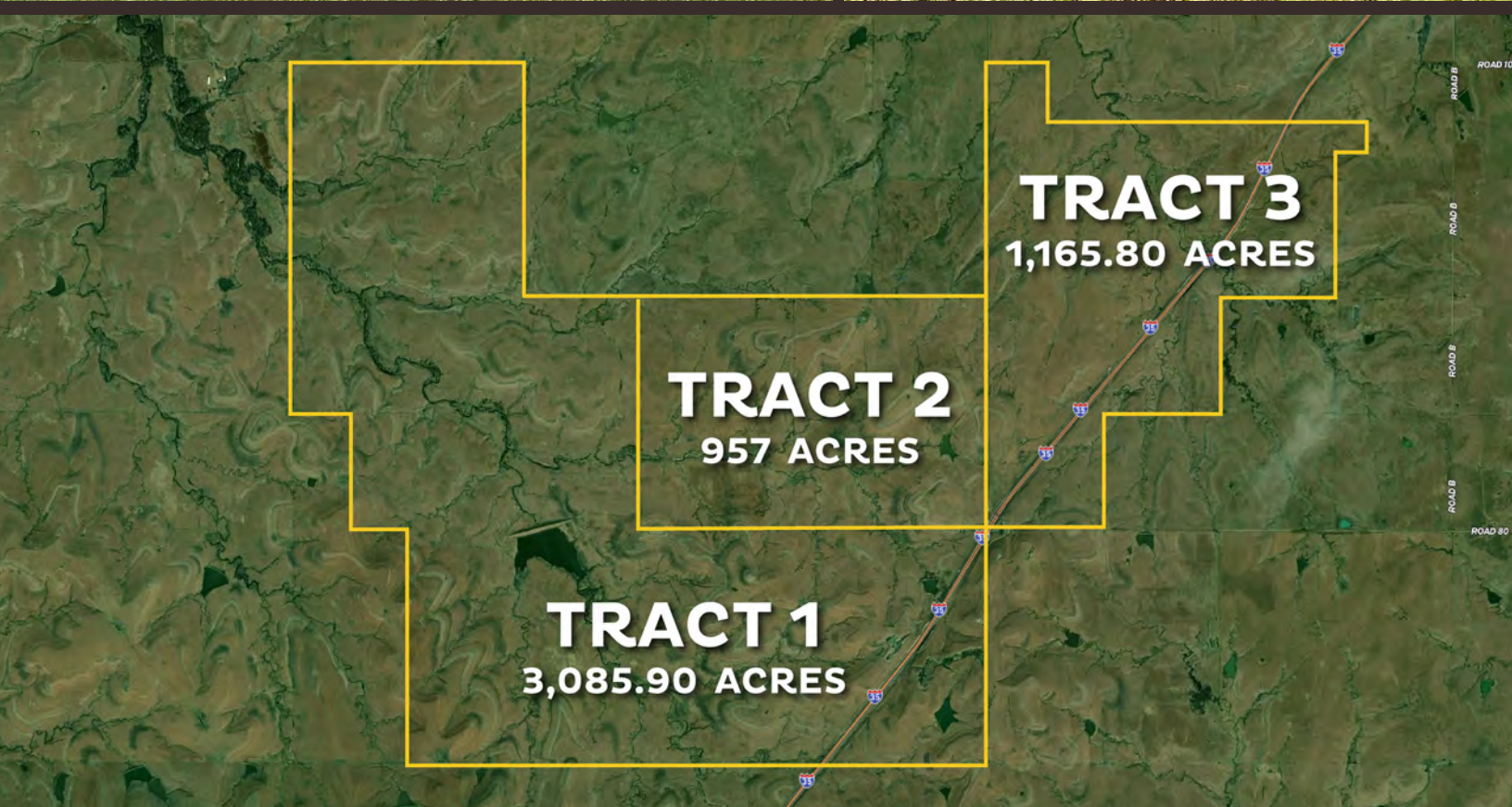
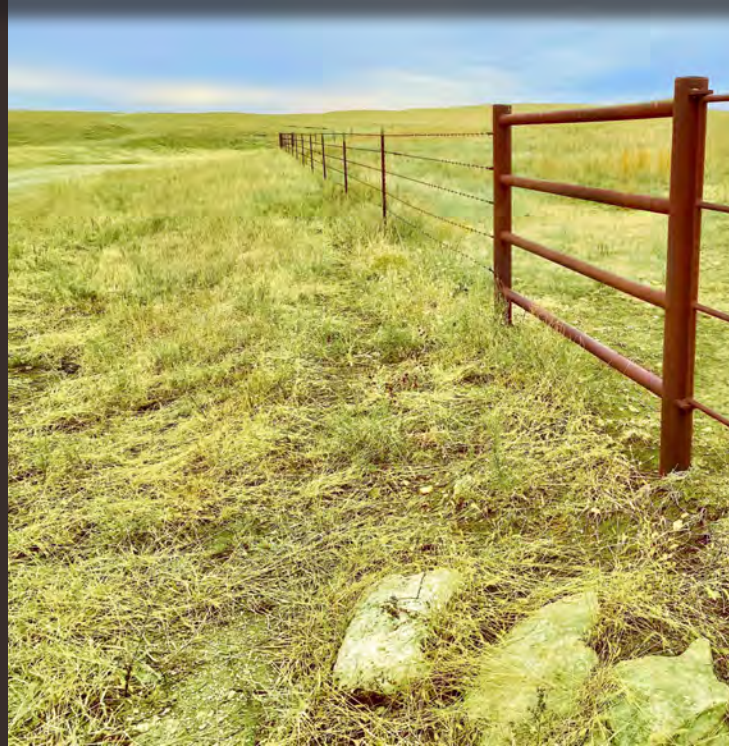
Terry Rupp, ALC

316.259.2106

terry@reecenichols.com

HAW RANCH

Property Photos



ReeceNichols
SOUTH CENTRAL KANSAS
An Equal Opportunity Company and Equal Housing Lender
of the Reece & Nichols Affiliates, Inc.

John Rupp, ALC

316.250.5198

johnrupp@reecenichols.com

Jake Steven, ALC

316.708.5960

jake@reecenichols.com

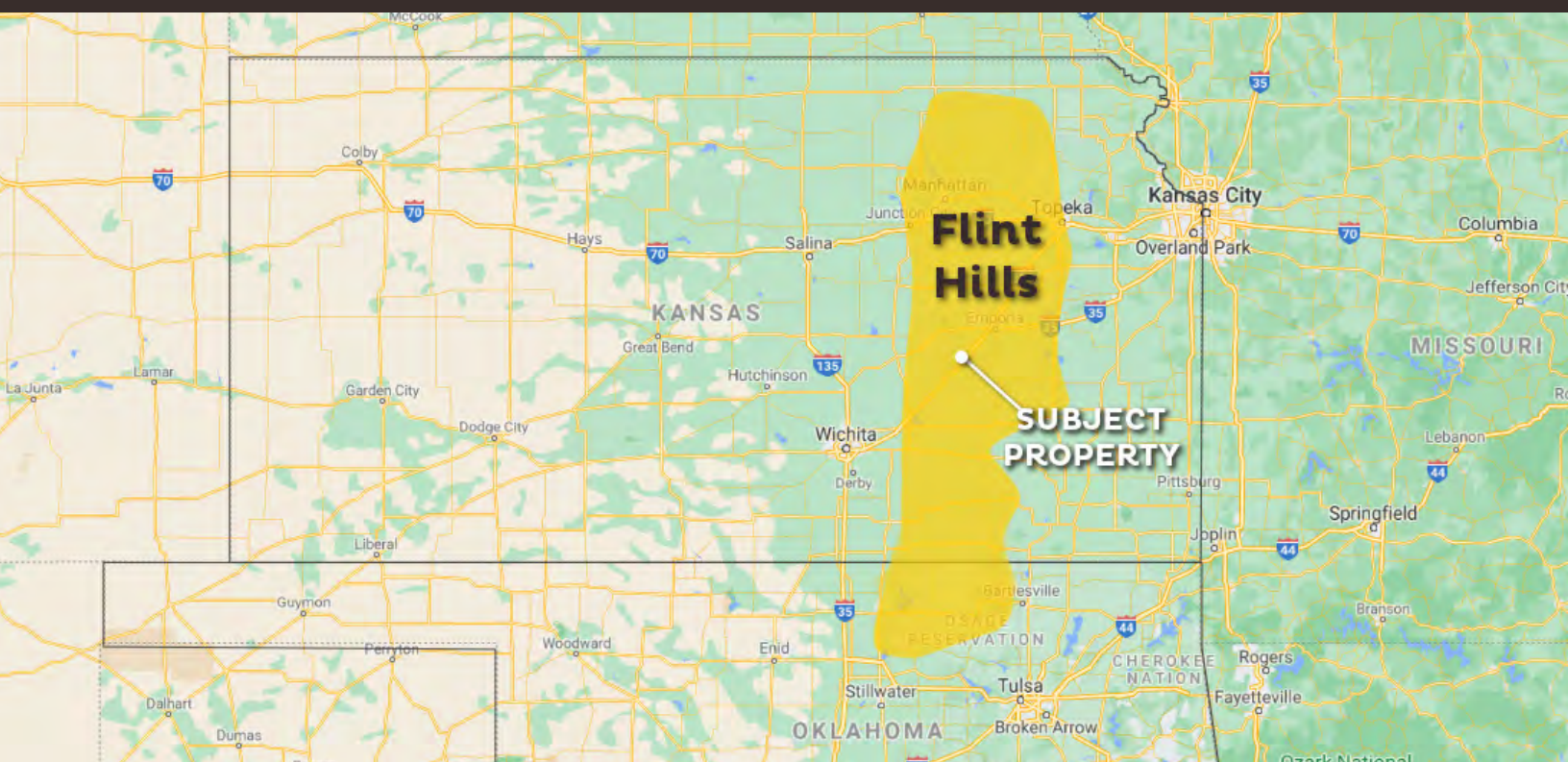
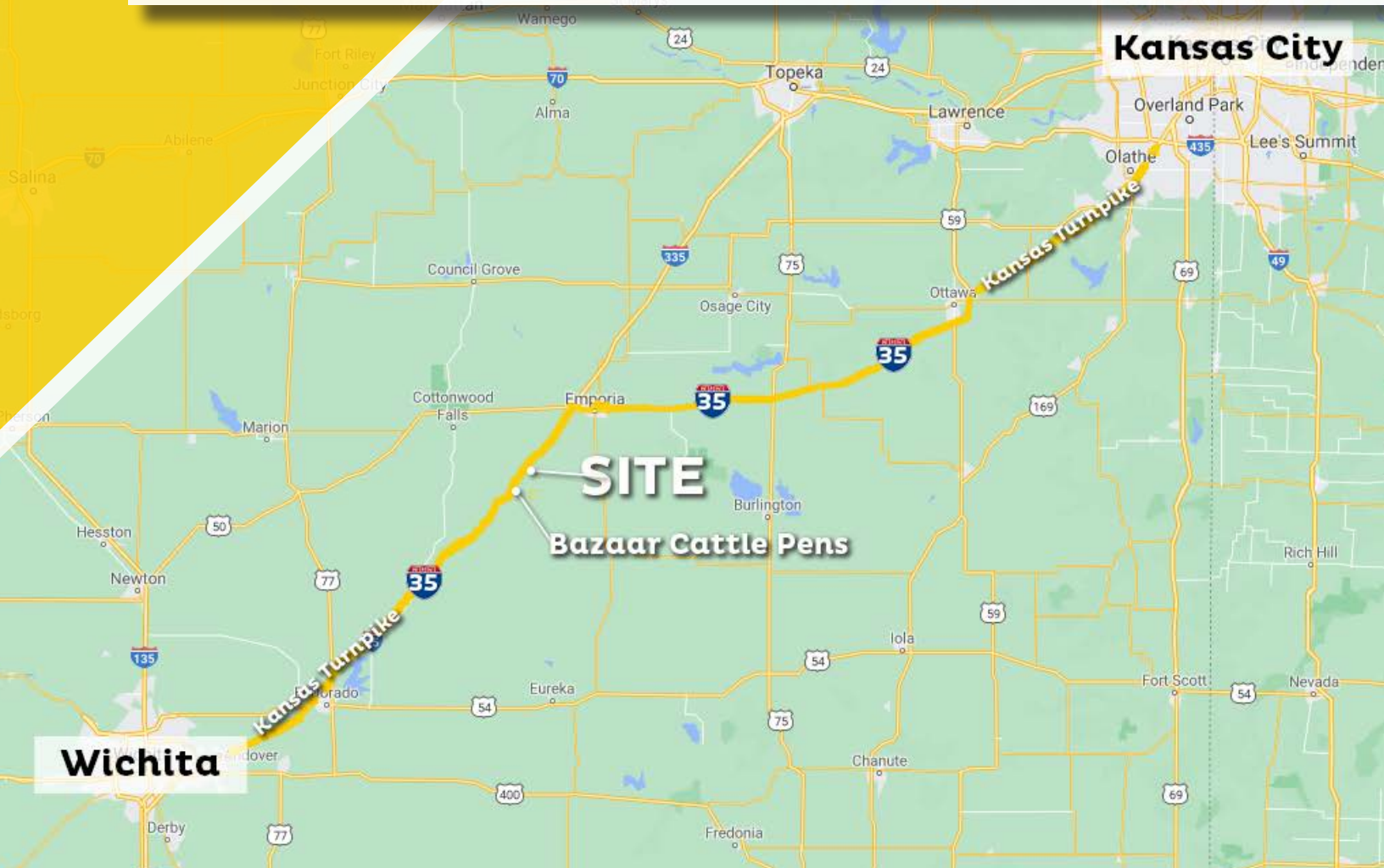
Terry Rupp, ALC

316.259.2106

terry@reecenichols.com

HAW RANCH

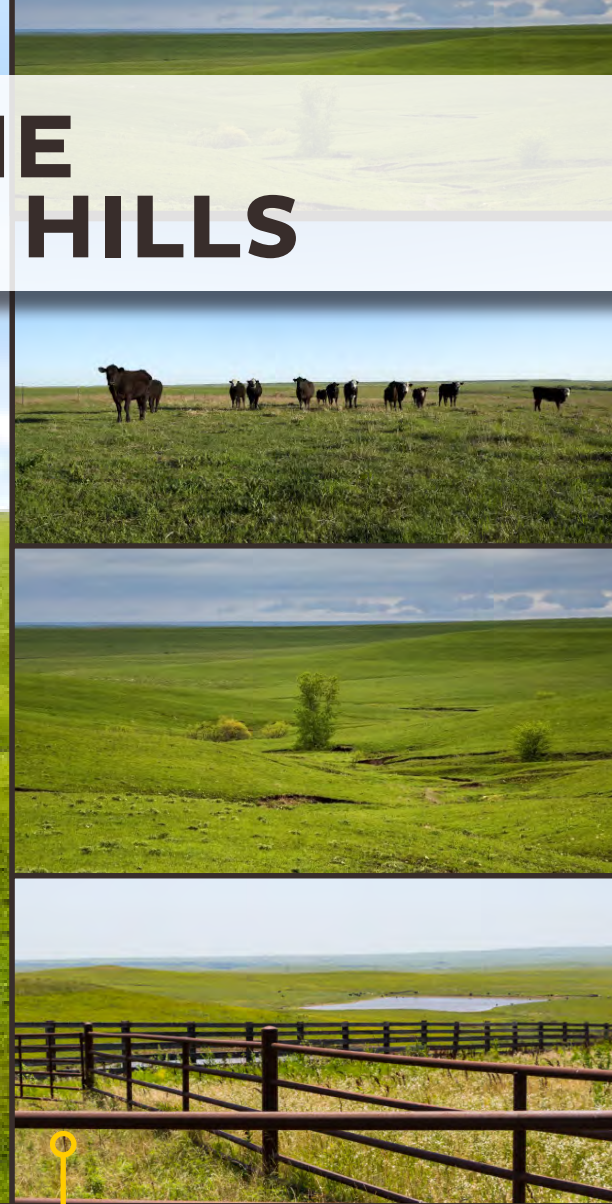
Location Map



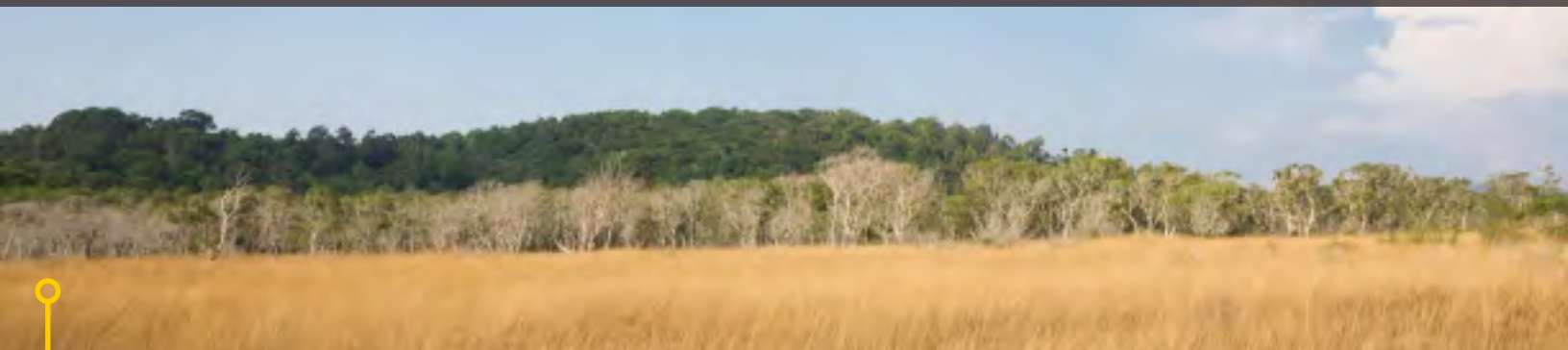
ABOUT THE KANSAS FLINT HILLS



The band of rolling hills that comprise the Flint Hills spans from Eastern Kansas to Northern Oklahoma. This distinct region has the densest coverage of tall grass prairie in North America.



The Flint Hills are named after the abundance of flint eroded from the bedrock at the surface.



Due to its rocky soil, the region is dominated by cattle ranches as opposed to the common Great Plains crop land. The Flint Hills represent the last expanse of intact tallgrass prairie in the nation. The Environmental Protection Agency and the World Wildlife Fund have designated the Flint Hills as an ecoregion, distinct from other grasslands of the Great Plains.